

Converting Colors

HunterLab(56.7977, 4.3199,
9.0869)

Have a look what the booklet for
HunterLab(56.7977, 4.3199, 9.0869)
contains.

HunterLab(56.7338, 4.5515, 9.1099)	3
<i>Conversions</i>	4
<i>Details</i>	6
<i>Harmonies</i>	12
<i>Previews</i>	24
<i>Color Blindness Simulation</i>	28
<i>CSS Examples</i>	31

Color

**HunterLab(56.7338, 4.5515,
9.1099)**

Conversions

Conversions Part 1

Format	Color
Hex	AF948C
RGB	175, 148, 140
RGB Percent	69%, 58%, 55%
CMY	0.3137, 0.4196, 0.4510
CMYK	0.00, 0.15, 0.20, 0.31
HSL	14°, 18%, 62%
HSV	14°, 20%, 69%
XYZ	33.0028, 32.1872, 29.2843
YIQ	155.1610, 18.6600, 3.2360

Conversions

Conversions Part 2

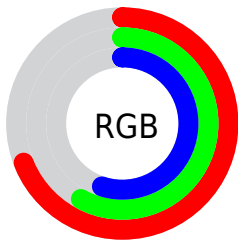
Format	Color
R _Y B	175, 150, 140
Decimal	11506828
CIE Lab	63.50, 8.77, 7.97
CIE LCh	63, 11.847, 42.258
Yxy	32.1887, 0.3493, 0.3407
Android (android.graphics.Color)	4289696908 (0xFFAF948C)
YUV	155.1610, -7.4744, 17.3988
Hunter-Lab	56.7338, 4.5515, 9.1099

Details

The HunterLab color $56.7338, 4.5515, 9.1099$ is a light color, and the websafe version is hex $CC9999$. A complement of this color would be $60.2555, -9.5499, -2.9459$, and the grayscale version is $57.3425, -3.0597, 3.1155$.

A 20% lighter version of the original color is $79.4513, 4.3267, 10.9458$, and $36.6403, 4.7951, 7.0093$ is the 20% darker color. If you saturate the color by 10%, you get $52.6517, 8.9503, 11.6828$, and if you desaturate by 10%, it is $61.0175, 0.4085, 6.3921$.

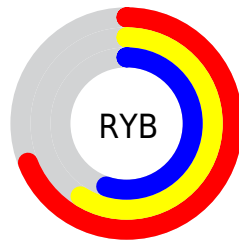
Distribution



Red (69%)

Green (58%)

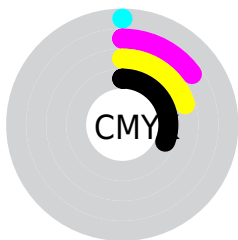
Blue (55%)



Red (69%)

Yellow (59%)

Blue (55%)

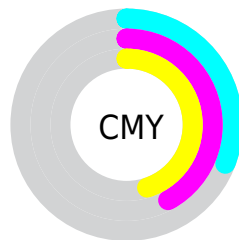


Cyan (0%)

Magenta (15%)

Yellow (20%)

Black (31%)



Cyan (31%)

Magenta (42%)

Yellow (45%)

Brightness & Saturation Gradients


These gradients show how the HunterLab color 56.7338, 4.5515, 9.1099 changes by changing the brightness by 10 percent. The first figure shows a shift by +10% for each color and the second figure -10%.

Similar to the brightness gradients but the following saturation gradients show a change of the HunterLab color 56.7338, 4.5515, 9.1099 by changing the saturation by 10% instead.

 56.7338, 4.5515,
9.1099


 56.7338, 4.5515,
9.1099


176.6290, 1.4856,
18.6879

 46.3742, 4.6362,
8.1074


 79.4398, 4.1938,
11.1423

 36.7344, 4.6516,
7.1067


 91.7119, 3.9358,
12.1756

 27.8741, 4.5848,
6.1009


 104.5579, 3.6300,
13.2226

 19.8694, 4.4201,
5.0772

117.9534, 3.2798,
14.2843

 12.8237, 4.1337,
4.0108

131.8765, 2.8880,
15.3613

 6.2234, 5.8070,
4.3564

146.3081, 2.4570,

0.0000, NaN, NaN

16.4541

0.0000, NaN, NaN

161.2308, 1.9890,
17.5629

0.0000, NaN, NaN

■ 56.7338, 4.5515,
9.1099

■ 56.7338, 4.5515,
9.1099

■ 52.6517, 8.9503,
11.6828

■ 61.0175, 0.4085,
6.3921

■ 48.7961, 13.6219,
14.0672

■ 65.4749, -3.4938,
3.5572

■ 45.2021, 18.5580,
16.2098

■ 70.0873, -7.1810,
0.6284

■ 41.9089, 23.7211,
18.0416

■ 74.8380, -10.6777,
-2.3782

■ 38.9604, 29.0256,
19.4808

■ 79.7131, -14.0070,
-5.4503

■ 36.4024, 34.3205,
20.4418

■ 84.7009, -17.1899,
-8.5793

■ 34.2776, 39.3791,
20.8579

■ 89.5166, -21.8001,
-7.8840

■ 32.6079, 43.8719,
20.8609

■ 93.7305, -27.8843,
-2.5768

■ 32.6079, 43.8721,
20.8609

Harmonies

Analogous

The Analogous color harmony consists of three colors that are next to each other on the color wheel.



56.7351, 7.0592, 5.0678



56.7338, 4.5515, 9.1099



56.7351, 0.0443, 11.4095

Triad

The Triadic color harmony groups three colors that are evenly spaced from another and form a triangle on the color wheel.



56.7351, 4.5496, 9.1108



56.7351, -12.2295, 5.9068



56.7351, -0.8951, -6.9984

Complementary

The Complementary color scheme is a pair of colors which are on the opposite of each other on the color wheel.



56.7338, 4.5515, 9.1099



60.2555, -9.5499, -2.9459

Split Complementary

Split-complementary colors differ from the complementary color scheme. The scheme consists of three colors, the original color and two neighbors of the complement color.



56.7351, -6.0408, -6.7224



56.7338, 4.5515, 9.1099



56.7351, -12.4605, 1.0347

Square

The Square scheme is like the rectangle color scheme, but the four colors are evenly spaced on the color wheel.



56.7351, 4.5496, 9.1108



56.7351, -9.5891, 9.6773



56.7351, -10.2320, -3.6767



56.7351, 3.8407, -4.4002

Rectangle

The Rectangle color scheme consists of four colors that form a rectangle on the color wheel.



56.7338, 4.5515, 9.1099



56.7351, -3.4230, 11.7821



56.7351, -10.2320, -3.6767



56.7351, -2.6365, -7.2448

Sweetspot

The Sweet Spot groups the original color and five complimentary colors.



56.7351, 4.5496, 9.1108



83.9552, -1.5242, 7.0930



55.3860, 12.8808, -4.9990



39.4029, -0.5612, 3.4568



94.3401, -5.0338, 5.1257



41.3092, -2.2042, 2.2444

Same Dimension

The Same Dimension uses a secret algorithm to generate beautiful new colors.



56.7351, 4.5496, 9.1108



73.4789, 8.6447, 13.7394



61.6020, -3.8269, 14.0117



28.8123, 0.0597, 2.9113



27.7381, 36.6877, 17.7344



5.4359, 3.9230, 3.4183

Inverse Universe

The Inverse Universe completely reimagines the original color for something new.



60.2555, -9.5499, -2.9459



79.1913, -14.2759, -5.8353



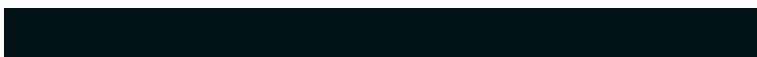
55.1880, -1.3371, -9.5891



29.5919, -3.0545, 0.2434



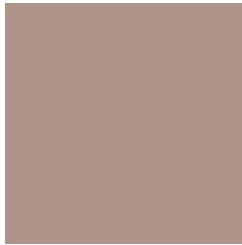
38.3643, -12.2714, -21.4617



6.9619, -2.8079, -2.6404

Previews

White Background



This preview shows how the HunterLab color 56.7338, 4.5515, 9.1099 looks on a white background.

Color Contrast Check

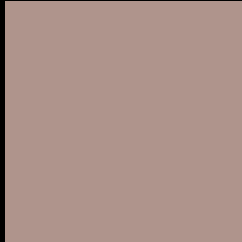
Large Text (above 18pt) WCAG AA × Fail

Any Text WCAG AA × Fail

Large Text (above 18pt) WCAG AAA × Fail

Any Text WCAG AAA × Fail

Black Background



This preview shows how the HunterLab color 56.7338, 4.5515, 9.1099 looks on a black background.

Color Contrast Check

Large Text (above 18pt) WCAG AA ✓ Pass

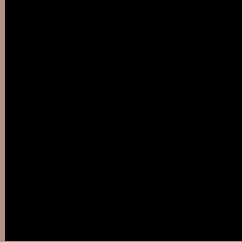
Any Text WCAG AA ✓ Pass

Large Text (above 18pt) WCAG AAA ✓ Pass

Any Text WCAG AAA ✓ Pass

If you want to check with other color combinations, try the [Color Contrast Checker](#).

HunterLab 56.7338, 4.5515, 9.1099 Background



This preview shows how black text looks on a background with the HunterLab color 56.7338, 4.5515, 9.1099.



This preview shows how white text looks on a background with the HunterLab color 56.7338, 4.5515,

9.1099.

Color Blindness Simulation

Color vision deficiency is a very complex topic, and I could not describe the different causes any better than Wikipedia does, so if you want to learn more, you should check out their [article about color blindness](#).

Dichromacy



Original Color

56.7338, 4.5515, 9.1099

Protanopia

56.6891, -2.7054, 7.7054

Deuteranopia

56.6321, 4.2110, 8.9948



Tritanopia

56.5970, 9.2677, 1.6210

Trichromacy



Original Color

56.7338, 4.5515, 9.1099

Protanomaly

56.6441, 0.0307, 8.1178

Deuteranomaly

56.6321, 4.2110, 8.9948

Tritanomaly

56.5882, 7.4914, 4.3245

Monochromacy



Original Color

56.7338, 4.5515, 9.1099

Achromatopsia

57.2519, -3.0548, 3.1106

Achromatomaly

56.8681, -0.2266, 4.9549

CSS Examples

Text

The CSS property to change the color of the text to HunterLab 56.7338, 4.5515, 9.1099 is called "color". The color property can be set on classes, ids or directly on the HTML element.

This example shows how text in the color `rgb(175, 148, 140)` looks like.

```
.text, #text, p{  
    color:rgb(175, 148, 140)  
}
```

If you want to add a text shadow in that color use the text-shadow property, you can generate a text shadow directly with our [CSS Text Shadow Generator](#).

Here you see how black text with a 4 pixel rgb(175, 148, 140) colored shadow looks like.

```
.shadow{ text-shadow: 4px 4px 2px rgb(175, 148, 140) }
```

Border

The CSS property to change the border of an element to HunterLab 56.7338, 4.5515, 9.1099 is called "border". The border property can be set on classes, ids or directly on the HTML element.

This example shows the color as border, it can be applied via the CSS property "border" or "border-color".

```
.border, #border, table{ border:4px solid rgb(175, 148, 140) }
```


If only the border color should be changed use the property `border-color`.

```
.border{ border-color:rgb(175, 148, 140) }
```

If you want to add a box shadow in that color use:

Here you see how a box with a 4 pixel `rgb(175, 148, 140)` colored shadow looks like.

```
.boxshadow{ -moz-box-shadow:4px 4px 4px  
4px rgb(175, 148, 140); -webkit-box-  
shadow:4px 4px 4px 4px rgb(175, 148, 140);  
box-shadow:4px 4px 4px 4px rgb(175, 148,  
140) }
```

Background

The CSS property to change the background color of an element to HunterLab 56.7338, 4.5515, 9.1099 is called "background". The background property can be set on classes, ids or directly on the HTML element.

```
.background, #background, body{  
background: rgb(175, 148, 140) }
```

If only the background color should be changed can be used:

```
.background{ background-color: rgb(175,  
148, 140) }
```

This example shows the color as background, it is applied via the CSS property "background".

To optimize and compress your CSS code, you can use our [online CSS compressor and optimizer](#) based on csstidy. If you want to create a linear or radial gradient as background or border, check our [CSS Gradient Generator](#).

Hey! You found this booklet interesting? Support Converting Colors with the new Membership Option!

The pro membership hides all ads, plus gives you double the colors in the color bucket, and more awesome pro features!

[Learn more, Memberships starting at \\$2.50/m!](#)

**Follow me
on Twitter!**

@ConvertingColor