

# Converting Colors

HunterLab(56.8892, 11.1050,  
10.2829)

Have a look what the booklet for  
HunterLab(56.8892, 11.1050,  
10.2829) contains.

<b>HunterLab(56.9850, 10.8494, 10.2864)</b> .....	3
<b><i>Conversions</i></b> .....	4
<b><i>Details</i></b> .....	6
<b><i>Harmonies</i></b> .....	12
<b><i>Previews</i></b> .....	24
<b><i>Color Blindness Simulation</i></b> .....	28
<b><i>CSS Examples</i></b> .....	31

# Color

**HunterLab(56.9850, 10.8494,  
10.2864)**

# Conversions

## Conversions Part 1

Format	Color
Hex	BC908A
RGB	188, 144, 138
RGB Percent	74%, 56%, 54%
CMY	0.2627, 0.4353, 0.4588
CMYK	0.00, 0.23, 0.27, 0.26
HSL	7°, 27%, 64%
HSV	7°, 27%, 74%
XYZ	35.2998, 32.4729, 28.4522
YIQ	156.4720, 28.1500, 7.4620

# Conversions

## Conversions Part 2

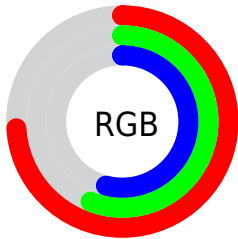
<b>Format</b>	<b>Color</b>
R <sub>Y</sub> B	188, 145, 138
Decimal	12357770
CIE Lab	63.73, 15.73, 9.61
CIE LCh	64, 18.430, 31.413
Yxy	32.4744, 0.3668, 0.3375
Android (android.graphics.Color)	4290547850 (0xFFBC908A)
YUV	156.4720, -9.1067, 27.6501
Hunter-Lab	56.9850, 10.8494, 10.2864

# Details

The HunterLab color  $56.9850, 10.8494, 10.2864$  is a light color, and the websafe version is hex  $CC9999$ . A complement of this color would be  $65.1834, -14.7049, -3.3672$ , and the grayscale version is  $57.8797, -3.0883, 3.1447$ .

A 20% lighter version of the original color is  $79.7259, 11.0565, 12.6645$ , and  $36.8804, 10.5144, 8.0671$  is the 20% darker color. If you saturate the color by 10%, you get  $52.2748, 16.8665, 12.6399$ , and if you desaturate by 10%, it is  $62.0087, 5.1154, 7.8843$ .

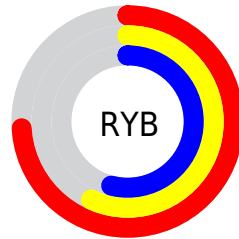
# Distribution



Red (74%)

Green (56%)

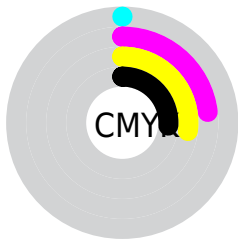
Blue (54%)



Red (74%)

Yellow (57%)

Blue (54%)

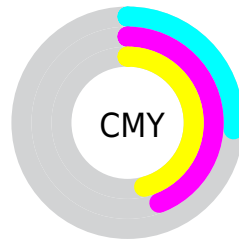


Cyan (0%)

Magenta (23%)

Yellow (27%)

Black (26%)



Cyan (26%)

Magenta (44%)

Yellow (46%)

# Brightness & Saturation Gradients

These gradients show how the HunterLab color 56.9850, 10.8494, 10.2864 changes by changing the brightness by 10 percent. The first figure shows a shift by +10% for each color and the second figure -10%.

Similar to the brightness gradients but the following saturation gradients show a change of the HunterLab color 56.9850, 10.8494, 10.2864 by changing the saturation by 10% instead.



■ 56.9850, 10.8494,  
10.2864

■ 56.9850, 10.8494,  
10.2864

■ 176.9957, 10.3332,  
20.5207

■ 46.6091, 10.5854,  
9.1881

■ 79.7208, 11.1378,  
12.4914

■ 36.9518, 10.2319,  
8.0830

■ 92.0067, 11.1819,  
13.6035

■ 28.0725, 9.7723,  
6.9618

■ 104.8659, 11.1663,  
14.7254

■ 20.0466, 9.1867,  
5.8074

■ 118.2739, 11.0958,  
15.8584

■ 12.9769, 8.4484,  
4.5883

■ 132.2092, 10.9741,  
17.0038

■ 6.4286, 10.3179,  
4.5000

146.6525, 10.8047,

0.0000, NaN, NaN

18.1623

0.0000, NaN, NaN

161.5866, 10.5902,  
19.3344

0.0000, NaN, NaN

■ 56.9850, 10.8494,  
10.2864

■ 56.9850, 10.8494,  
10.2864

■ 52.2748, 16.8665,  
12.6399

■ 62.0087, 5.1154,  
7.8843

■ 47.9277, 23.1442,  
14.8968

■ 67.2980, -0.3341,  
5.4580

■ 44.0081, 29.5926,  
16.9879

■ 72.8182, -5.5230,  
3.0239

■ 40.5873, 36.0326,  
18.8134

■ 78.5402, -10.4800,  
0.5898

■ 37.7385, 42.1691,  
20.2487

■ 84.4404, -15.2347,  
-1.8408

■ 35.5248, 47.5981,  
21.1695

■ 90.4993, -19.8152,  
-4.2670

■ 33.9791, 51.8756,  
21.5252

■ 94.5682, -24.7808,  
-1.4762

■ 33.5967, 52.9763,  
21.6296

# Harmonies

## Analogous

The Analogous color harmony consists of three colors that are next to each other on the color wheel.



56.9863, 13.3539, 3.4656



56.9850, 10.8494, 10.2864



56.9863, 4.5913, 14.6247

# Triad

The Triadic color harmony groups three colors that are evenly spaced from another and form a triangle on the color wheel.



56.9863, 10.8472, 10.2873



56.9863, -16.0684, 9.7372



56.9863, -2.6597, -13.7605

# Complementary

The Complementary color scheme is a pair of colors which are on the opposite of each other on the color wheel.



56.9850, 10.8494, 10.2864



65.1834, -14.7049, -3.3672

# Split Complementary

Split-complementary colors differ from the complementary color scheme. The scheme consists of three colors, the original color and two neighbors of the complement color.



56.9863, -10.2968, -11.4797



56.9850, 10.8494, 10.2864



56.9863, -17.7742, 2.7359

# Square

The Square scheme is like the rectangle color scheme, but the four colors are evenly spaced on the color wheel.



56.9863, 10.8472, 10.2873



56.9863, -10.9260, 14.3396



56.9863, -15.7196, -5.1612



56.9863, 5.2917, -11.0253



# Rectangle

The Rectangle color scheme consists of four colors that form a rectangle on the color wheel.



56.9850, 10.8494, 10.2864



56.9863, -0.7027, 15.8783



56.9863, -15.7196, -5.1612



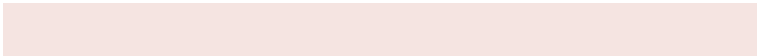
56.9863, -5.3475, -13.5533

# Sweetspot

The Sweet Spot groups the original color and five complimentary colors.



56.9863, 10.8472, 10.2873



89.4839, 0.6533, 7.8504



56.7918, 20.9577, -10.9356



40.9913, 0.8098, 3.8696



97.7295, -5.2146, 5.3098



44.2712, -2.3622, 2.4053



# Same Dimension

The Same Dimension uses a secret algorithm to generate beautiful new colors.



56.9863, 10.8472, 10.2873



72.9016, 19.3615, 15.7383



63.9067, -1.5532, 17.0436



31.1705, 0.5413, 2.9028



27.8288, 43.3616, 17.9071



6.0407, 6.9513, 3.8439



# Inverse Universe

The Inverse Universe completely reimagines the original color for something new.



65.1834, -14.7049, -3.3672



86.2439, -22.4070, -6.5270



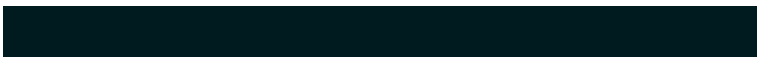
57.6237, -2.8187, -13.4948



32.5709, -3.7950, 0.5766



45.7941, -19.9968, -14.0713



9.3664, -4.3409, -2.3364



# Previews

## White Background



This preview shows how the HunterLab color 56.9850, 10.8494, 10.2864 looks on a white background.

## Color Contrast Check

Large Text (above 18pt) WCAG AA × Fail

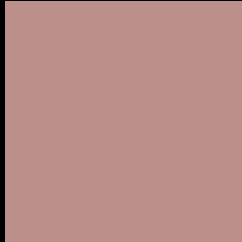
Any Text WCAG AA × Fail

Large Text (above 18pt) WCAG AAA × Fail

Any Text WCAG AAA × Fail



# Black Background



This preview shows how the HunterLab color 56.9850, 10.8494, 10.2864 looks on a black background.

## Color Contrast Check

Large Text (above 18pt) WCAG AA ✓ Pass

Any Text WCAG AA ✓ Pass

Large Text (above 18pt) WCAG AAA ✓ Pass

Any Text WCAG AAA ✓ Pass

If you want to check with other color combinations, try the [Color Contrast Checker](#).

## HunterLab 56.9850, 10.8494, 10.2864 Background



This preview shows how black text looks on a background with the HunterLab color 56.9850, 10.8494, 10.2864.



This preview shows how white text looks on a background with the HunterLab color 56.9850, 10.8494,



# Color Blindness Simulation

Color vision deficiency is a very complex topic, and I could not describe the different causes any better than Wikipedia does, so if you want to learn more, you should check out their [article about color blindness](#).

## Dichromacy



### Original Color

56.9850, 10.8494, 10.2864

### Protanopia

57.0683, -2.8733, 8.1167

### Deuteranopia

57.0361, 3.9872, 10.6130



## Tritanopia

57.0903, 14.7076, 4.1381

# Trichromacy



## Original Color

56.9850, 10.8494, 10.2864

## Protanomaly

56.8171, 2.0194, 8.7497

## Deuteranomaly

56.9007, 6.3664, 10.5127

## Tritanomaly

57.0980, 13.1032, 6.3204

# Monochromacy



## Original Color

56.9850, 10.8494, 10.2864

## Achromatopsia

57.6586, -3.0765, 3.1327

## Achromatomaly

57.4032, 1.5435, 6.0302

# CSS Examples

## Text

The CSS property to change the color of the text to HunterLab 56.9850, 10.8494, 10.2864 is called "color". The color property can be set on classes, ids or directly on the HTML element.

This example shows how text in the color `rgb(188, 144, 138)` looks like.

```
.text, #text, p{  
    color:rgb(188, 144, 138)  
}
```

If you want to add a text shadow in that color use the text-shadow property, you can generate a text shadow directly with our [CSS Text Shadow Generator](#).

Here you see how black text with a 4 pixel rgb(188, 144, 138) colored shadow looks like.

```
.shadow{ text-shadow: 4px 4px 2px rgb(188, 144, 138) }
```

## Border

The CSS property to change the border of an element to HunterLab 56.9850, 10.8494, 10.2864 is called "border". The border property can be set on classes, ids or directly on the HTML element.

This example shows the color as border, it can be applied via the CSS property "border" or "border-color".

```
.border, #border, table{ border:4px solid rgb(188, 144, 138) }
```



If only the border color should be changed use the property `border-color`.

```
.border{ border-color:rgb(188, 144, 138) }
```

If you want to add a box shadow in that color use:

Here you see how a box with a 4 pixel `rgb(188, 144, 138)` colored shadow looks like.

```
.boxshadow{ -moz-box-shadow:4px 4px 4px  
4px rgb(188, 144, 138); -webkit-box-  
shadow:4px 4px 4px 4px rgb(188, 144, 138);  
box-shadow:4px 4px 4px 4px rgb(188, 144,  
138) }
```

# Background

The CSS property to change the background color of an element to HunterLab 56.9850, 10.8494, 10.2864 is called "background". The background property can be set on classes, ids or directly on the HTML element.

```
.background, #background, body{  
background: rgb(188, 144, 138) }
```

If only the background color should be changed can be used:

```
.background{ background-color: rgb(188,  
144, 138) }
```

This example shows the color as background, it is applied via the CSS property "background".

To optimize and compress your CSS code, you can use our [online CSS compressor and optimizer](#) based on csstidy. If you want to create a linear or radial gradient as background or border, check our [CSS Gradient Generator](#).

Hey! You found this booklet interesting? Support Converting Colors with the new Membership Option!

The pro membership hides all ads, plus gives you double the colors in the color bucket, and more awesome pro features!

**[Learn more, Memberships starting at \\$2.50/m!](#)**

**Follow me  
on Twitter!**

@ConvertingColor