

Converting Colors

HunterLab(56.8988, 2.1519,
14.9074)

Have a look what the booklet for
HunterLab(56.8988, 2.1519,
14.9074) contains.

HunterLab(57.0293, 1.9617, 15.0044)	3
<i>Conversions</i>	4
<i>Details</i>	6
<i>Harmonies</i>	12
<i>Previews</i>	24
<i>Color Blindness Simulation</i>	28
<i>CSS Examples</i>	31

Color

**HunterLab(57.0293, 1.9617,
15.0044)**

Conversions

Conversions Part 1

Format	Color
Hex	B0967D
RGB	176, 150, 125
RGB Percent	69%, 59%, 49%
CMY	0.3098, 0.4117, 0.5098
CMYK	0.00, 0.15, 0.29, 0.31
HSL	29°, 24%, 59%
HSV	29°, 29%, 69%
XYZ	32.5124, 32.5234, 23.9661
YIQ	154.9240, 23.5210, -2.2630

Conversions

Conversions Part 2

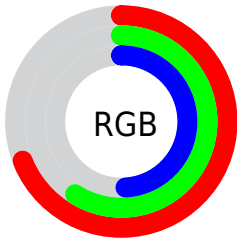
Format	Color
RYB	176, 174, 125
Decimal	11572861
CIELab	63.77, 5.83, 16.78
CIELCh	64, 17.769, 70.845
Yxy	32.5249, 0.3653, 0.3654
Android (android.graphics.Color)	4289762941 (0xFFB0967D)
YUV	154.9240, -14.7525, 18.4837
Hunter-Lab	57.0293, 1.9617, 15.0044

Details

The HunterLab color $57.0293, 1.9617, 15.0044$ is a light color, and the websafe version is hex $CC9999$. A complement of this color would be $54.4305, -5.5282, -11.2983$, and the grayscale version is $57.2733, -3.0560, 3.1118$.

A 20% lighter version of the original color is $79.7219, 1.3384, 17.8230$, and $36.9546, 2.6376, 11.8474$ is the 20% darker color. If you saturate the color by 10%, you get $54.1845, 4.3659, 18.1228$, and if you desaturate by 10%, it is $59.9909, -0.1703, 11.4364$.

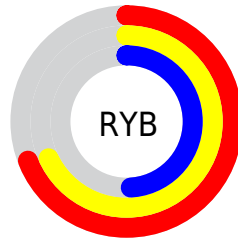
Distribution



Red (69%)

Green (59%)

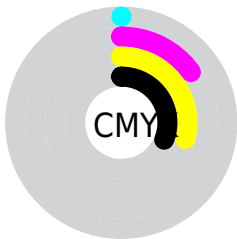
Blue (49%)



Red (69%)

Yellow (68%)

Blue (49%)

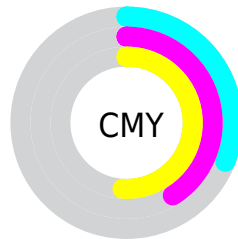


Cyan (0%)

Magenta (15%)

Yellow (29%)

Black (31%)



Cyan (31%)

Magenta (41%)

Yellow (51%)

Brightness & Saturation Gradients

These gradients show how the HunterLab color 57.0293, 1.9617, 15.0044 changes by changing the brightness by 10 percent. The first figure shows a shift by +10% for each color and the second figure -10%.

Similar to the brightness gradients but the following saturation gradients show a change of the HunterLab color 57.0293, 1.9617, 15.0044 by changing the saturation by 10% instead.

■ 57.0293, 1.9617,
15.0044

■ 57.0293, 1.9617,
15.0044

177.0603, -2.2195,
28.1952

■ 46.6506, 2.2012,
13.4681

■ 79.7703, 1.3187,
17.9932

■ 36.9901, 2.3819,
11.8839

■ 92.0586, 0.9281,
19.4617

■ 28.1075, 2.4931,
10.2302

■ 104.9201, 0.4953,
20.9210

■ 20.0779, 2.5225,
8.4709

118.3304, 0.0231,
22.3752

■ 13.0040, 2.4510,
6.8829

132.2678, -0.4864,
23.8275

■ 6.4641, 3.5851,
4.5249

146.7132, -1.0310,

0.0000, NaN, NaN

25.2804

0.0000, NaN, NaN

161.6492, -1.6092,
26.7357

0.0000, NaN, NaN

■ 57.0293, 1.9617,
15.0044

■ 57.0293, 1.9617,
15.0044

■ 54.1845, 4.3659,
18.1228

■ 59.9909, -0.1703,
11.4364

■ 51.4628, 7.0627,
20.7418

■ 63.0562, -2.0414,
7.4611

■ 48.8764, 10.0591,
22.8146

■ 66.2181, -3.6721,
3.1200

■ 46.4368, 13.3556,
24.2968

■ 69.4691, -5.0811,
-1.5502

■ 44.1555, 16.9397,
25.1546

■ 72.8025, -6.2865,
-6.5170

■ 42.0435, 20.7803,
25.3764

■ 76.2122, -7.3055,
-11.7516

■ 40.1046, 24.7948,
25.0699

■ 79.6928, -8.1539,
-17.2290

■ 39.9145, 25.2044,
25.0364

■ 82.8087, -11.2357,
-16.9083

■ 85.7086, -15.7447,
-12.9085

Harmonies

Analogous

The Analogous color harmony consists of three colors that are next to each other on the color wheel.



57.0306, 8.7504, 11.6701



57.0293, 1.9617, 15.0044



57.0306, -5.8409, 15.4155

Triad

The Triadic color harmony groups three colors that are evenly spaced from another and form a triangle on the color wheel.



57.0306, 1.9597, 15.0052



57.0306, -17.0429, 0.3539



57.0306, 7.0992, -8.7791

Complementary

The Complementary color scheme is a pair of colors which are on the opposite of each other on the color wheel.



57.0293, 1.9617, 15.0044



54.4305, -5.5282, -11.2983

Split Complementary

Split-complementary colors differ from the complementary color scheme. The scheme consists of three colors, the original color and two neighbors of the complement color.



57.0306, -0.1964, -12.7630



57.0293, 1.9617, 15.0044



57.0306, -13.9554, -7.0383

Square

The Square scheme is like the rectangle color scheme, but the four colors are evenly spaced on the color wheel.



57.0306, 1.9597, 15.0052



57.0306, -16.5349, 7.5907



57.0306, -7.8849, -12.0863



57.0306, 11.8261, -1.7790

Rectangle

The Rectangle color scheme consists of four colors that form a rectangle on the color wheel.



57.0293, 1.9617, 15.0044



57.0306, -10.5347, 14.0465



57.0306, -7.8849, -12.0863



57.0306, 4.8501, -10.5554

Sweetspot

The Sweet Spot groups the original color and five complimentary colors.



57.0306, 1.9597, 15.0052



84.8436, -2.7066, 10.1495



51.1306, 18.2299, -2.2981



39.2194, -1.1019, 5.0941



94.3401, -5.0338, 5.1257



41.3092, -2.2042, 2.2444

Same Dimension

The Same Dimension uses a secret algorithm to generate beautiful new colors.



57.0306, 1.9597, 15.0052



74.2431, 4.7468, 23.0658



64.3655, -10.1262, 21.6120



30.2823, -0.9523, 3.6602



34.3599, 21.1915, 21.5434



6.9883, 1.8440, 4.3384

Inverse Universe

The Inverse Universe completely reimagines the original color for something new.



54.4305, -5.5282, -11.2983



69.9783, -7.4765, -20.1276



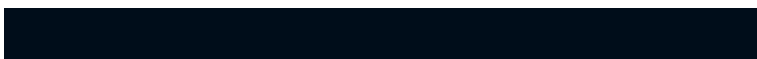
47.3057, 6.7784, -22.2116



29.8703, -2.1473, -0.5009



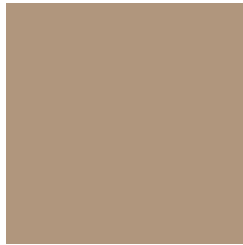
27.8336, 5.6319, -46.9472



6.0014, -0.8414, -5.6847

Previews

White Background



This preview shows how the HunterLab color 57.0293, 1.9617, 15.0044 looks on a white background.

Color Contrast Check

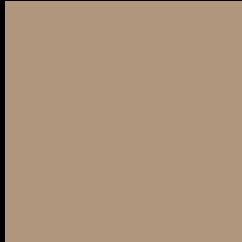
Large Text (above 18pt) WCAG AA × Fail

Any Text WCAG AA × Fail

Large Text (above 18pt) WCAG AAA × Fail

Any Text WCAG AAA × Fail

Black Background



This preview shows how the HunterLab color 57.0293, 1.9617, 15.0044 looks on a black background.

Color Contrast Check

Large Text (above 18pt) WCAG AA ✓ Pass

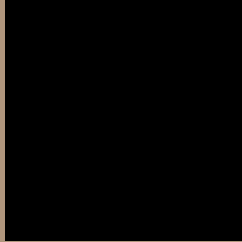
Any Text WCAG AA ✓ Pass

Large Text (above 18pt) WCAG AAA ✓ Pass

Any Text WCAG AAA ✓ Pass

If you want to check with other color combinations, try the [Color Contrast Checker](#).

HunterLab 57.0293, 1.9617, 15.0044 Background



This preview shows how black text looks on a background with the HunterLab color 57.0293, 1.9617, 15.0044.



This preview shows how white text looks on a background with the HunterLab color 57.0293, 1.9617,

Color Blindness Simulation

Color vision deficiency is a very complex topic, and I could not describe the different causes any better than Wikipedia does, so if you want to learn more, you should check out their [article about color blindness](#).

Dichromacy



Original Color

57.0293, 1.9617, 15.0044

Protanopia

57.0404, -3.7610, 14.2116

Deuteranopia

57.1654, 3.8513, 15.1694



Tritanopia

57.1799, 9.7797, 2.3297

Trichromacy



Original Color

57.0293, 1.9617, 15.0044

Protanomaly

57.1084, -2.0898, 14.6606

Deuteranomaly

57.0607, 3.4995, 15.0618

Tritanomaly

57.0048, 7.1289, 7.3890

Monochromacy



Original Color

57.0293, 1.9617, 15.0044

Achromatopsia

57.2519, -3.0548, 3.1106

Achromatomaly

57.0812, -1.2953, 7.7439

CSS Examples

Text

The CSS property to change the color of the text to HunterLab 57.0293, 1.9617, 15.0044 is called "color". The color property can be set on classes, ids or directly on the HTML element.

This example shows how text in the color `rgb(176, 150, 125)` looks like.

```
.text, #text, p{  
    color:rgb(176, 150, 125)  
}
```

If you want to add a text shadow in that color use the text-shadow property, you can generate a text shadow directly with our [CSS Text Shadow Generator](#).

Here you see how black text with a 4 pixel rgb(176, 150, 125) colored shadow looks like.

```
.shadow{ text-shadow: 4px 4px 2px rgb(176, 150, 125) }
```

Border

The CSS property to change the border of an element to HunterLab 57.0293, 1.9617, 15.0044 is called "border". The border property can be set on classes, ids or directly on the HTML element.

This example shows the color as border, it can be applied via the CSS property "border" or "border-color".

```
.border, #border, table{ border:4px solid rgb(176, 150, 125) }
```


If only the border color should be changed use the property `border-color`.

```
.border{ border-color:rgb(176, 150, 125) }
```

If you want to add a box shadow in that color use:

Here you see how a box with a 4 pixel `rgb(176, 150, 125)` colored shadow looks like.

```
.boxshadow{ -moz-box-shadow:4px 4px 4px  
4px rgb(176, 150, 125); -webkit-box-  
shadow:4px 4px 4px 4px rgb(176, 150, 125);  
box-shadow:4px 4px 4px 4px rgb(176, 150,  
125) }
```

Background

The CSS property to change the background color of an element to HunterLab 57.0293, 1.9617, 15.0044 is called "background". The background property can be set on classes, ids or directly on the HTML element.

```
.background, #background, body{  
background: rgb(176, 150, 125) }
```

If only the background color should be changed can be used:

```
.background{ background-color: rgb(176,  
150, 125) }
```

This example shows the color as background, it is applied via the CSS property "background".

To optimize and compress your CSS code, you can use our [online CSS compressor and optimizer](#) based on csstidy. If you want to create a linear or radial gradient as background or border, check our [CSS Gradient Generator](#).

Hey! You found this booklet interesting? Support Converting Colors with the new Membership Option!

The pro membership hides all ads, plus gives you double the colors in the color bucket, and more awesome pro features!

[Learn more, Memberships starting at \\$2.50/m!](#)

**Follow me
on Twitter!**

@ConvertingColor