

Converting Colors

HunterLab(56.9019, 3.8382,
14.2083)

Have a look what the booklet for
HunterLab(56.9019, 3.8382,
14.2083) contains.

HunterLab(56.8294, 4.2356, 14.1441)	3
<i>Conversions</i>	4
<i>Details</i>	6
<i>Harmonies</i>	12
<i>Previews</i>	24
<i>Color Blindness Simulation</i>	28
<i>CSS Examples</i>	31

Color

**HunterLab(56.8294, 4.2356,
14.1441)**

Conversions

Conversions Part 1

Format	Color
Hex	B3947F
RGB	179, 148, 127
RGB Percent	70%, 58%, 50%
CMY	0.2980, 0.4196, 0.5020
CMYK	0.00, 0.17, 0.29, 0.30
HSL	24°, 25%, 60%
HSV	24°, 29%, 70%
XYZ	33.0111, 32.2958, 24.5725
YIQ	154.8750, 25.2170, 0.0410

Conversions

Conversions Part 2

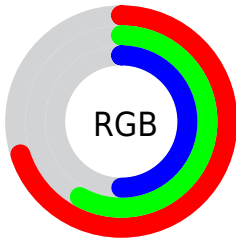
Format	Color
RYB	179, 162, 127
Decimal	11768959
CIELab	63.59, 8.41, 15.45
CIElCh	64, 17.595, 61.436
Yxy	32.2973, 0.3673, 0.3593
Android (android.graphics.Color)	4289959039 (0xFFB3947F)
YUV	154.8750, -13.7424, 21.1576
Hunter-Lab	56.8294, 4.2356, 14.1441

Details

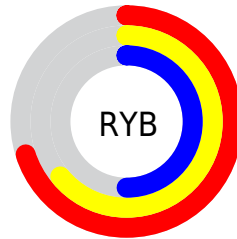
The HunterLab color $56.8294, 4.2356, 14.1441$ is a light color, and the websafe version is hex $CC9999$. A complement of this color would be $56.7622, -7.7740, -9.7067$, and the grayscale version is $57.2490, -3.0547, 3.1104$.

A 20% lighter version of the original color is $79.4975, 3.7281, 16.8472$, and $36.6871, 4.4362, 11.0357$ is the 20% darker color. If you saturate the color by 10%, you get $53.5506, 7.4504, 17.0777$, and if you desaturate by 10%, it is $60.2573, 1.2986, 10.8342$.

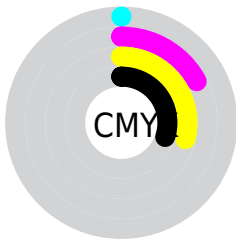
Distribution



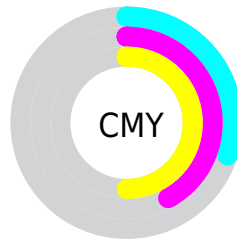
- Red (70%)
- Green (58%)
- Blue (50%)



- Red (70%)
- Yellow (64%)
- Blue (50%)



- Cyan (0%)
- Magenta (17%)
- Yellow (29%)
- Black (30%)



- Cyan (30%)
- Magenta (42%)
- Yellow (50%)

Brightness & Saturation Gradients

These gradients show how the HunterLab color 56.8294, 4.2356, 14.1441 changes by changing the brightness by 10 percent. The first figure shows a shift by +10% for each color and the second figure -10%.

Similar to the brightness gradients but the following saturation gradients show a change of the HunterLab color 56.8294, 4.2356, 14.1441 by changing the saturation by 10% instead.

■ 56.8294, 4.2356,
14.1441

■ 56.8294, 4.2356,
14.1441

176.7686, 1.0330,
26.7759

■ 46.4636, 4.3391,
12.6905

■ 79.5468, 3.8428,
16.9847

■ 36.8171, 4.3747,
11.1968

■ 91.8241, 3.5685,
18.3857

■ 27.9496, 4.3297,
9.6433

■ 104.6751, 3.2472,
19.7812

■ 19.9368, 4.1888,
7.9972

118.0754, 2.8821,
21.1747

■ 12.8820, 3.9287,
6.4515

132.0032, 2.4759,
22.5690

■ 6.3023, 5.4801,
4.4116

146.4392, 2.0310,

0.0000, NaN, NaN

23.9662

0.0000, NaN, NaN

161.3663, 1.5494,
25.3681

0.0000, NaN, NaN

■ 56.8294, 4.2356,
14.1441

■ 56.8294, 4.2356,
14.1441

■ 53.5506, 7.4504,
17.0777

■ 60.2573, 1.2986,
10.8342

■ 50.4330, 10.9631,
19.5792

■ 63.8163, -1.3734,
7.1932

■ 47.4957, 14.7766,
21.5912

■ 67.4951, -3.8036,
3.2629

■ 44.7581, 18.8809,
23.0553

■ 71.2830, -6.0133,
-0.9215

■ 42.2409, 23.2437,
23.9205

■ 75.1705, -8.0233,
-5.3303

■ 39.9640, 27.8011,
24.1578

■ 79.1493, -9.8530,
-9.9384

■ 37.9395, 32.4222,
23.8694

■ 83.2123, -11.5201,
-14.7245

■ 37.7591, 32.8520,
23.8421

■ 86.7684, -16.3115,
-11.4660

■ 90.2913, -21.5990,
-6.8655

Harmonies

Analogous

The Analogous color harmony consists of three colors that are next to each other on the color wheel.



56.8307, 10.1848, 9.9726



56.8294, 4.2356, 14.1441



56.8307, -3.4066, 15.4706

Triad

The Triadic color harmony groups three colors that are evenly spaced from another and form a triangle on the color wheel.



56.8307, 4.2336, 14.1449



56.8307, -17.1189, 2.7387



56.8307, 4.9108, -10.3133

Complementary

The Complementary color scheme is a pair of colors which are on the opposite of each other on the color wheel.



56.8294, 4.2356, 14.1441



56.7622, -7.7740, -9.7067

Split Complementary

Split-complementary colors differ from the complementary color scheme. The scheme consists of three colors, the original color and two neighbors of the complement color.



56.8307, -2.6632, -12.9005



56.8294, 4.2356, 14.1441



56.8307, -15.1477, -4.7701

Square

The Square scheme is like the rectangle color scheme, but the four colors are evenly spaced on the color wheel.



56.8307, 4.2336, 14.1449



56.8307, -15.4871, 9.4361



56.8307, -9.9564, -10.7497



56.8307, 10.5902, -4.0766

Rectangle

The Rectangle color scheme consists of four colors that form a rectangle on the color wheel.



56.8294, 4.2356, 14.1441



56.8307, -8.3562, 14.7245



56.8307, -9.9564, -10.7497



56.8307, 2.4886, -11.6733

Sweetspot

The Sweet Spot groups the original color and five complimentary colors.



56.8307, 4.2336, 14.1449



85.3539, -1.8031, 9.6784



52.1904, 19.3738, -4.3524



39.8471, -0.6153, 4.8980



95.4677, -5.0939, 5.1869



42.2927, -2.2566, 2.2978

Same Dimension

The Same Dimension uses a secret algorithm to generate beautiful new colors.



56.8307, 4.2336, 14.1449



73.1599, 8.4378, 21.5588



64.2737, -8.2822, 20.9379



30.0833, -0.6160, 3.4443



31.9308, 27.1278, 20.1506



6.6082, 2.6208, 4.1178

Inverse Universe

The Inverse Universe completely reimagines the original color for something new.



56.7622, -7.7740, -9.7067



73.0424, -11.0508, -17.1852



49.3193, 4.7805, -20.7958



30.0735, -2.4801, -0.2540



31.3311, -0.6604, -37.7357



6.4784, -1.5674, -4.7138

Previews

White Background



This preview shows how the HunterLab color 56.8294, 4.2356, 14.1441 looks on a white background.

Color Contrast Check

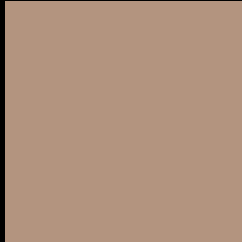
Large Text (above 18pt) WCAG AA × Fail

Any Text WCAG AA × Fail

Large Text (above 18pt) WCAG AAA × Fail

Any Text WCAG AAA × Fail

Black Background



This preview shows how the HunterLab color 56.8294, 4.2356, 14.1441 looks on a black background.

Color Contrast Check

Large Text (above 18pt) WCAG AA ✓ Pass

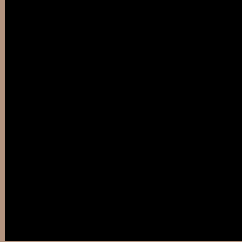
Any Text WCAG AA ✓ Pass

Large Text (above 18pt) WCAG AAA ✓ Pass

Any Text WCAG AAA ✓ Pass

If you want to check with other color combinations, try the [Color Contrast Checker](#).

HunterLab 56.8294, 4.2356, 14.1441 Background



This preview shows how black text looks on a background with the HunterLab color 56.8294, 4.2356, 14.1441.



This preview shows how white text looks on a background with the HunterLab color 56.8294, 4.2356,

Color Blindness Simulation

Color vision deficiency is a very complex topic, and I could not describe the different causes any better than Wikipedia does, so if you want to learn more, you should check out their [article about color blindness](#).

Dichromacy



Original Color

56.8294, 4.2356, 14.1441

Protanopia

56.9248, -4.0255, 13.0097

Deuteranopia

56.8294, 4.2356, 14.1441



Tritanopia

56.7963, 11.1740, 2.8213

Trichromacy



Original Color

56.8294, 4.2356, 14.1441

Protanomaly

56.8914, -1.2315, 13.3901

Deuteranomaly

56.8294, 4.2356, 14.1441

Tritanomaly

56.6735, 8.8290, 7.0517

Monochromacy



Original Color

56.8294, 4.2356, 14.1441

Achromatopsia

57.2519, -3.0548, 3.1106

Achromatomaly

56.9151, -0.3426, 7.1590

CSS Examples

Text

The CSS property to change the color of the text to HunterLab 56.8294, 4.2356, 14.1441 is called "color". The color property can be set on classes, ids or directly on the HTML element.

This example shows how text in the color `rgb(179, 148, 127)` looks like.

```
.text, #text, p{  
    color:rgb(179, 148, 127)  
}
```

If you want to add a text shadow in that color use the text-shadow property, you can generate a text shadow directly with our [CSS Text Shadow Generator](#).

Here you see how black text with a 4 pixel rgb(179, 148, 127) colored shadow looks like.

```
.shadow{ text-shadow: 4px 4px 2px rgb(179, 148, 127) }
```

Border

The CSS property to change the border of an element to HunterLab 56.8294, 4.2356, 14.1441 is called "border". The border property can be set on classes, ids or directly on the HTML element.

This example shows the color as border, it can be applied via the CSS property "border" or "border-color".

```
.border, #border, table{ border:4px solid rgb(179, 148, 127) }
```


If only the border color should be changed use the property `border-color`.

```
.border{ border-color:rgb(179, 148, 127) }
```

If you want to add a box shadow in that color use:

Here you see how a box with a 4 pixel `rgb(179, 148, 127)` colored shadow looks like.

```
.boxshadow{ -moz-box-shadow:4px 4px 4px  
4px rgb(179, 148, 127); -webkit-box-  
shadow:4px 4px 4px 4px rgb(179, 148, 127);  
box-shadow:4px 4px 4px 4px rgb(179, 148,  
127) }
```

Background

The CSS property to change the background color of an element to HunterLab 56.8294, 4.2356, 14.1441 is called "background". The background property can be set on classes, ids or directly on the HTML element.

```
.background, #background, body{  
background: rgb(179, 148, 127) }
```

If only the background color should be changed can be used:

```
.background{ background-color: rgb(179,  
148, 127) }
```

This example shows the color as background, it is applied via the CSS property "background".

To optimize and compress your CSS code, you can use our [online CSS compressor and optimizer](#) based on csstidy. If you want to create a linear or radial gradient as background or border, check our [CSS Gradient Generator](#).

Hey! You found this booklet interesting? Support Converting Colors with the new Membership Option!

The pro membership hides all ads, plus gives you double the colors in the color bucket, and more awesome pro features!

[Learn more, Memberships starting at \\$2.50/m!](#)

**Follow me
on Twitter!**

@ConvertingColor