

Converting Colors

HunterLab(56.9173, 5.6488,
11.3818)

Have a look what the booklet for
HunterLab(56.9173, 5.6488,
11.3818) contains.

HunterLab(56.7454, 5.7510, 11.1174)	3
<i>Conversions</i>	4
<i>Details</i>	6
<i>Harmonies</i>	12
<i>Previews</i>	24
<i>Color Blindness Simulation</i>	28
<i>CSS Examples</i>	31

Color

**HunterLab(56.7454, 5.7510,
11.1174)**

Conversions

Conversions Part 1

Format	Color
Hex	B39387
RGB	179, 147, 135
RGB Percent	70%, 58%, 53%
CMY	0.2980, 0.4235, 0.4706
CMYK	0.00, 0.18, 0.25, 0.30
HSL	16°, 22%, 62%
HSV	16°, 25%, 70%
XYZ	33.3973, 32.2004, 27.3767
YIQ	155.2000, 22.9240, 3.0520

Conversions

Conversions Part 2

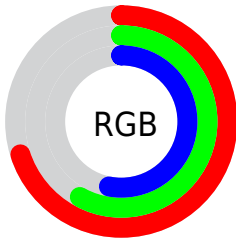
Format	Color
RYB	179, 152, 135
Decimal	11768711
CIELab	63.51, 10.12, 10.85
CIElCh	64, 14.836, 47.009
Yxy	32.2019, 0.3592, 0.3463
Android (android.graphics.Color)	4289958791 (0xFFB39387)
YUV	155.2000, -9.9586, 20.8726
Hunter-Lab	56.7454, 5.7510, 11.1174

Details

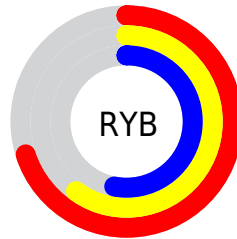
The HunterLab color $56.7454, 5.7510, 11.1174$ is a light color, and the websafe version is hex $CC9999$. A complement of this color would be $60.0350, -10.0750, -5.3019$, and the grayscale version is $57.3669, -3.0610, 3.1169$.

A 20% lighter version of the original color is $79.4143, 5.3832, 13.5084$, and $36.6841, 6.0014, 8.8192$ is the 20% darker color. If you saturate the color by 10%, you get $52.8368, 10.0026, 13.8128$, and if you desaturate by 10%, it is $60.8518, 1.7696, 8.2057$.

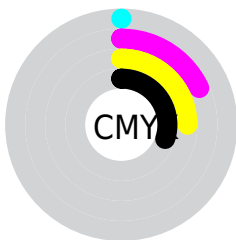
Distribution



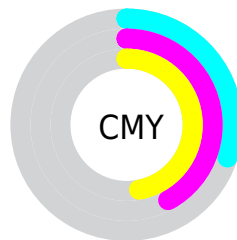
- Red (70%)
- Green (58%)
- Blue (53%)



- Red (70%)
- Yellow (60%)
- Blue (53%)



- Cyan (0%)
- Magenta (18%)
- Yellow (25%)
- Black (30%)



- Cyan (30%)
- Magenta (42%)
- Yellow (47%)

Brightness & Saturation Gradients

These gradients show how the HunterLab color 56.7454, 5.7510, 11.1174 changes by changing the brightness by 10 percent. The first figure shows a shift by +10% for each color and the second figure -10%.

Similar to the brightness gradients but the following saturation gradients show a change of the HunterLab color 56.7454, 5.7510, 11.1174 by changing the saturation by 10% instead.

■ 56.7454, 5.7510,
11.1174

■ 56.7454, 5.7510,
11.1174

176.6459, 3.1870,
21.8524

■ 46.3851, 5.7663,
9.9450

■ 79.4528, 5.5211,
13.4550

■ 36.7444, 5.7081,
8.7587

■ 91.7255, 5.3226,
14.6274

■ 27.8833, 5.5624,
7.5471

■ 104.5721, 5.0740,
15.8064

■ 19.8776, 5.3124,
6.2896

117.9682, 4.7787,
16.9939

■ 12.8308, 4.9328,
4.9626

131.8919, 4.4400,
18.1912

■ 6.2331, 6.7394,
4.3631

146.3240, 4.0604,

0.0000, NaN, NaN

19.3996

0.0000, NaN, NaN

161.2473, 3.6420,
20.6198

0.0000, NaN, NaN

■ 56.7454, 5.7510,
11.1174

■ 56.7454, 5.7510,
11.1174

■ 52.8368, 10.0026,
13.8128

■ 60.8518, 1.7696,
8.2057

■ 49.1489, 14.5403,
16.2390

■ 65.1292, -1.9551,
5.1146

■ 45.7142, 19.3542,
18.3343

■ 69.5599, -5.4485,
1.8758

■ 42.5679, 24.4071,
20.0253

■ 74.1276, -8.7349,
-1.4873

■ 39.7489, 29.6170,
21.2326

■ 78.8187, -11.8378,
-4.9563

■ 37.2963, 34.8428,
21.8849

■ 83.6217, -14.7786,
-8.5171

■ 35.2455, 39.8750,
21.9476

■ 88.3310, -18.6790,
-9.4010

■ 34.3022, 42.3902,
21.8790

■ 92.6739, -25.0773,
-3.8610

■ 93.9807, -26.9542,
-2.2470

Harmonies

Analogous

The Analogous color harmony consists of three colors that are next to each other on the color wheel.



56.7467, 9.4272, 6.4591



56.7454, 5.7510, 11.1174



56.7467, -0.1927, 13.4992

Triad

The Triadic color harmony groups three colors that are evenly spaced from another and form a triangle on the color wheel.



56.7467, 5.7490, 11.1183



56.7467, -14.7074, 5.6982



56.7467, 0.6730, -9.5025

Complementary

The Complementary color scheme is a pair of colors which are on the opposite of each other on the color wheel.



56.7454, 5.7510, 11.1174



60.0350, -10.0750, -5.3019

Split Complementary

Split-complementary colors differ from the complementary color scheme. The scheme consists of three colors, the original color and two neighbors of the complement color.



56.7467, -5.8144, -9.7658



56.7454, 5.7510, 11.1174



56.7467, -14.4991, -0.5016

Square

The Square scheme is like the rectangle color scheme, but the four colors are evenly spaced on the color wheel.



56.7467, 5.7490, 11.1183



56.7467, -11.8899, 10.6154



56.7467, -11.3075, -6.3179



56.7467, 6.4073, -5.6347

Rectangle

The Rectangle color scheme consists of four colors that form a rectangle on the color wheel.



56.7454, 5.7510, 11.1174



56.7467, -4.5485, 13.6713



56.7467, -11.3075, -6.3179



56.7467, -1.4972, -10.0297

Sweetspot

The Sweet Spot groups the original color and five complimentary colors.



56.7467, 5.7490, 11.1183



85.6875, -1.3820, 7.9148



54.5086, 16.7830, -6.0253



40.1728, -0.5147, 3.8411



95.4677, -5.0939, 5.1869



42.2927, -2.2566, 2.2978

Same Dimension

The Same Dimension uses a secret algorithm to generate beautiful new colors.



56.7467, 5.7490, 11.1183



73.3389, 10.4413, 16.6899



62.9365, -4.9099, 17.1012



29.7827, -0.1041, 3.1158



28.9997, 35.1506, 18.4849



6.0341, 3.9015, 3.7865

Inverse Universe

The Inverse Universe completely reimagines the original color for something new.



60.0350, -10.0750, -5.3019



78.5743, -14.8147, -9.4773



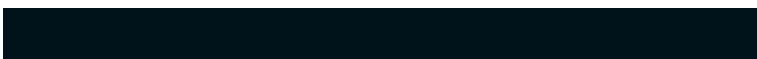
53.6082, 0.3997, -14.1280



30.3836, -2.9839, 0.1195



37.0481, -9.6066, -25.5691



7.2305, -2.6272, -3.3661

Previews

White Background



This preview shows how the HunterLab color 56.7454, 5.7510, 11.1174 looks on a white background.

Color Contrast Check

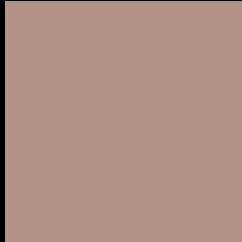
Large Text (above 18pt) WCAG AA × Fail

Any Text WCAG AA × Fail

Large Text (above 18pt) WCAG AAA × Fail

Any Text WCAG AAA × Fail

Black Background



This preview shows how the HunterLab color 56.7454, 5.7510, 11.1174 looks on a black background.

Color Contrast Check

Large Text (above 18pt) WCAG AA ✓ Pass

Any Text WCAG AA ✓ Pass

Large Text (above 18pt) WCAG AAA ✓ Pass

Any Text WCAG AAA ✓ Pass

If you want to check with other color combinations, try the [Color Contrast Checker](#).

HunterLab 56.7454, 5.7510, 11.1174 Background



This preview shows how black text looks on a background with the HunterLab color 56.7454, 5.7510, 11.1174.



This preview shows how white text looks on a background with the HunterLab color 56.7454, 5.7510,

Color Blindness Simulation

Color vision deficiency is a very complex topic, and I could not describe the different causes any better than Wikipedia does, so if you want to learn more, you should check out their [article about color blindness](#).

Dichromacy



Original Color

56.7454, 5.7510, 11.1174

Protanopia

56.6489, -3.1066, 9.6867

Deuteranopia

56.7091, 4.2146, 11.0528



Tritanopia

56.6894, 10.8285, 2.6883

Trichromacy



Original Color

56.7454, 5.7510, 11.1174

Protanomaly

56.7052, -0.0190, 10.1955

Deuteranomaly

56.8121, 4.5596, 11.1658

Tritanomaly

56.6500, 8.9175, 5.7410

Monochromacy



Original Color

56.7454, 5.7510, 11.1174

Achromatopsia

57.2519, -3.0548, 3.1106

Achromatomaly

56.9975, 0.1042, 5.9795

CSS Examples

Text

The CSS property to change the color of the text to HunterLab 56.7454, 5.7510, 11.1174 is called "color". The color property can be set on classes, ids or directly on the HTML element.

This example shows how text in the color `rgb(179, 147, 135)` looks like.

```
.text, #text, p{  
    color:rgb(179, 147, 135)  
}
```

If you want to add a text shadow in that color use the text-shadow property, you can generate a text shadow directly with our [CSS Text Shadow Generator](#).

Here you see how black text with a 4 pixel rgb(179, 147, 135) colored shadow looks like.

```
.shadow{ text-shadow: 4px 4px 2px rgb(179, 147, 135) }
```

Border

The CSS property to change the border of an element to HunterLab 56.7454, 5.7510, 11.1174 is called "border". The border property can be set on classes, ids or directly on the HTML element.

This example shows the color as border, it can be applied via the CSS property "border" or "border-color".

```
.border, #border, table{ border:4px solid rgb(179, 147, 135) }
```


If only the border color should be changed use the property `border-color`.

```
.border{ border-color:rgb(179, 147, 135) }
```

If you want to add a box shadow in that color use:

Here you see how a box with a 4 pixel `rgb(179, 147, 135)` colored shadow looks like.

```
.boxshadow{ -moz-box-shadow:4px 4px 4px  
4px rgb(179, 147, 135); -webkit-box-  
shadow:4px 4px 4px 4px rgb(179, 147, 135);  
box-shadow:4px 4px 4px 4px rgb(179, 147,  
135) }
```

Background

The CSS property to change the background color of an element to HunterLab 56.7454, 5.7510, 11.1174 is called "background". The background property can be set on classes, ids or directly on the HTML element.

```
.background, #background, body{  
background: rgb(179, 147, 135) }
```

If only the background color should be changed can be used:

```
.background{ background-color: rgb(179,  
147, 135) }
```

This example shows the color as background, it is applied via the CSS property "background".

To optimize and compress your CSS code, you can use our [online CSS compressor and optimizer](#) based on csstidy. If you want to create a linear or radial gradient as background or border, check our [CSS Gradient Generator](#).

Hey! You found this booklet interesting? Support Converting Colors with the new Membership Option!

The pro membership hides all ads, plus gives you double the colors in the color bucket, and more awesome pro features!

[Learn more, Memberships starting at \\$2.50/m!](#)

**Follow me
on Twitter!**

@ConvertingColor