

Converting Colors

HunterLab(56.9194, 11.9484,
10.6301)

Have a look what the booklet for
HunterLab(56.9194, 11.9484,
10.6301) contains.

HunterLab(56.9194, 11.9484, 10.6301)	3
<i>Conversions</i>	4
<i>Details</i>	6
<i>Harmonies</i>	12
<i>Previews</i>	24
<i>Color Blindness Simulation</i>	28
<i>CSS Examples</i>	31

Color

**HunterLab(56.9194, 11.9484,
10.6301)**

Conversions

Conversions Part 1

Format	Color
Hex	BE8F89
RGB	190, 143, 137
RGB Percent	75%, 56%, 54%
CMY	0.2549, 0.4392, 0.4627
CMYK	0.00, 0.25, 0.28, 0.25
HSL	7°, 29%, 64%
HSV	7°, 28%, 75%
XYZ	35.5730, 32.3982, 28.0454
YIQ	156.3690, 29.9380, 8.0980

Conversions

Conversions Part 2

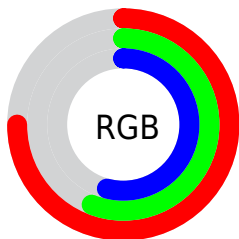
Format	Color
R_{YB}	190, 144, 137
Decimal	12488585
CIE Lab	63.67, 16.92, 10.11
CIE LCh	64, 19.709, 30.869
Yxy	32.3997, 0.3705, 0.3374
Android (android.graphics.Color)	4290678665 (0xFFBE8F89)
YUV	156.3690, -9.5489, 29.4944
Hunter-Lab	56.9194, 11.9484, 10.6301

Details

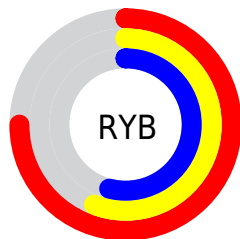
The HunterLab color **56.9194, 11.9484, 10.6301** is a light color, and the websafe version is hex **CC9999**. A complement of this color would be **65.8146, -15.5016, -3.6026**, and the grayscale version is **57.8389, -3.0861, 3.1425**.

A 20% lighter version of the original color is **79.6394, 12.1874, 13.0193**, and **36.7332, 11.2270, 8.2776** is the 20% darker color. If you saturate the color by 10%, you get **52.1700, 18.1437, 12.9855**, and if you desaturate by 10%, it is **61.9984, 6.0376, 8.2299**.

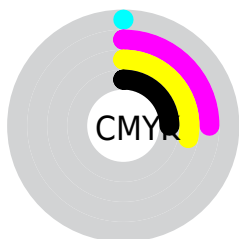
Distribution



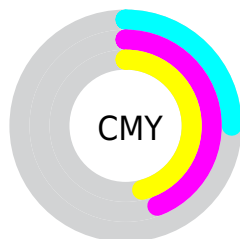
- Red (75%)
- Green (56%)
- Blue (54%)



- Red (75%)
- Yellow (56%)
- Blue (54%)



- Cyan (0%)
- Magenta (25%)
- Yellow (28%)
- Black (25%)



- Cyan (25%)
- Magenta (44%)
- Yellow (46%)

Brightness & Saturation Gradients

These gradients show how the HunterLab color 56.9194, 11.9484, 10.6301 changes by changing the brightness by 10 percent. The first figure shows a shift by +10% for each color and the second figure -10%.

Similar to the brightness gradients but the following saturation gradients show a change of the HunterLab color 56.9194, 11.9484, 10.6301 by changing the saturation by 10% instead.

■ 56.9194, 11.9484,
10.6301

■ 56.9194, 11.9484,
10.6301

176.9000, 11.8643,
21.0676

■ 46.5478, 11.6259,
9.5019

■ 79.6474, 12.3457,
12.8888

■ 36.8950, 11.2108,
8.3639

■ 91.9297, 12.4409,
14.0254

■ 28.0207, 10.6861,
7.2063

■ 104.7855, 12.4745,
15.1704

■ 20.0003, 10.0318,
6.0104

118.1902, 12.4514,
16.3256

■ 12.9369, 9.2215,
4.7431

132.1224, 12.3756,
17.4921

■ 6.3757, 11.2215,
4.4630

146.5626, 12.2506,

0.0000, NaN, NaN

18.6708

0.0000, NaN, NaN

161.4937, 12.0793,
19.8625

0.0000, NaN, NaN

■ 56.9194, 11.9484,
10.6301

■ 56.9194, 11.9484,
10.6301

■ 52.1700, 18.1437,
12.9855

■ 61.9984, 6.0376,
8.2299

■ 47.8032, 24.5916,
15.2454

■ 67.3560, 0.4173,
5.8107

■ 43.8873, 31.1846,
17.3358

■ 72.9554, -4.9349,
3.3891

■ 40.4969, 37.7176,
19.1504

■ 78.7655, -10.0475,
0.9729

■ 37.7072, 43.8621,
20.5585

■ 84.7613, -14.9509,
-1.4349

■ 35.5798, 49.1857,
21.4343

■ 90.9221, -19.6741,
-3.8340

■ 34.1383, 53.2316,
21.7682

■ 94.7033, -24.2830,
-1.2995

■ 33.9160, 53.8708,
21.8420

Harmonies

Analogous

The Analogous color harmony consists of three colors that are next to each other on the color wheel.



56.9207, 14.5574, 3.3378



56.9194, 11.9484, 10.6301



56.9207, 5.2822, 15.2554

Triad

The Triadic color harmony groups three colors that are evenly spaced from another and form a triangle on the color wheel.



56.9207, 11.9462, 10.6310



56.9207, -16.8483, 10.2728



56.9207, -2.7877, -15.0943

Complementary

The Complementary color scheme is a pair of colors which are on the opposite of each other on the color wheel.



56.9194, 11.9484, 10.6301



65.8146, -15.5016, -3.6026

Split Complementary

Split-complementary colors differ from the complementary color scheme. The scheme consists of three colors, the original color and two neighbors of the complement color.



56.9207, -10.9103, -12.5220



56.9194, 11.9484, 10.6301



56.9207, -18.7297, 2.8578

Square

The Square scheme is like the rectangle color scheme, but the four colors are evenly spaced on the color wheel.



56.9207, 11.9462, 10.6310



56.9207, -11.3226, 15.0714



56.9207, -16.6205, -5.6292



56.9207, 5.7446, -12.2186

Rectangle

The Rectangle color scheme consists of four colors that form a rectangle on the color wheel.



56.9194, 11.9484, 10.6301



56.9207, -0.3776, 16.6071



56.9207, -16.6205, -5.6292



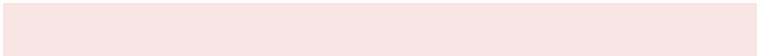
56.9207, -5.6547, -14.8350

Sweetspot

The Sweet Spot groups the original color and five complimentary colors.



56.9207, 11.9462, 10.6310



90.4983, 0.7354, 7.8988



56.8585, 22.6392, -12.2567



41.8827, 0.8746, 3.9344



98.8636, -5.2751, 5.3714



45.2661, -2.4153, 2.4594

Same Dimension

The Same Dimension uses a secret algorithm to generate beautiful new colors.



56.9207, 11.9462, 10.6310



72.9586, 20.7409, 16.1099



64.0743, -0.9710, 17.5652



31.1540, 0.5698, 2.8846



27.7650, 43.5710, 17.8714



6.0032, 7.0591, 3.8227

Inverse Universe

The Inverse Universe completely reimagines the original color for something new.



65.8146, -15.5016, -3.6026



87.1915, -23.3741, -6.7118



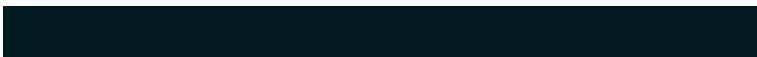
57.9296, -3.1685, -14.2188



32.5882, -3.8226, 0.5971



46.1345, -20.4308, -13.5598



9.4172, -4.4044, -2.2629

Previews

White Background



This preview shows how the HunterLab color 56.9194, 11.9484, 10.6301 looks on a white background.

Color Contrast Check

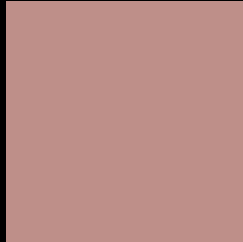
Large Text (above 18pt) WCAG AA × Fail

Any Text WCAG AA × Fail

Large Text (above 18pt) WCAG AAA × Fail

Any Text WCAG AAA × Fail

Black Background



This preview shows how the HunterLab color 56.9194, 11.9484, 10.6301 looks on a black background.

Color Contrast Check

Large Text (above 18pt) WCAG AA ✓ Pass

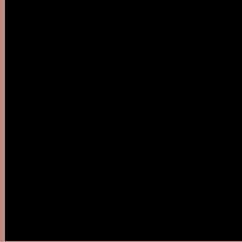
Any Text WCAG AA ✓ Pass

Large Text (above 18pt) WCAG AAA ✓ Pass

Any Text WCAG AAA ✓ Pass

If you want to check with other color combinations, try the [Color Contrast Checker](#).

HunterLab 56.9194, 11.9484, 10.6301 Background



This preview shows how black text looks on a background with the HunterLab color 56.9194, 11.9484, 10.6301.



This preview shows how white text looks on a background with the HunterLab color 56.9194, 11.9484,

Color Blindness Simulation

Color vision deficiency is a very complex topic, and I could not describe the different causes any better than Wikipedia does, so if you want to learn more, you should check out their [article about color blindness](#).

Dichromacy



Original Color

56.9194, 11.9484, 10.6301

Protanopia

57.0683, -2.8733, 8.1167

Deuteranopia

57.0110, 3.8530, 10.9737



Tritanopia

57.0291, 15.7910, 4.5341

Trichromacy



Original Color

56.9194, 11.9484, 10.6301

Protanomaly

56.9155, 2.3525, 8.8616

Deuteranomaly

56.9814, 6.5834, 10.9906

Tritanomaly

57.0342, 14.1907, 6.6971

Monochromacy



Original Color

56.9194, 11.9484, 10.6301

Achromatopsia

57.6586, -3.0765, 3.1327

Achromatomaly

57.1209, 2.0364, 5.7198

CSS Examples

Text

The CSS property to change the color of the text to HunterLab 56.9194, 11.9484, 10.6301 is called "color". The color property can be set on classes, ids or directly on the HTML element.

This example shows how text in the color `rgb(190, 143, 137)` looks like.

```
.text, #text, p{  
    color:rgb(190, 143, 137)  
}
```

If you want to add a text shadow in that color use the text-shadow property, you can generate a text shadow directly with our [CSS Text Shadow Generator](#).

Here you see how black text with a 4 pixel rgb(190, 143, 137) colored shadow looks like.

```
.shadow{ text-shadow: 4px 4px 2px rgb(190, 143, 137) }
```

Border

The CSS property to change the border of an element to HunterLab 56.9194, 11.9484, 10.6301 is called "border". The border property can be set on classes, ids or directly on the HTML element.

This example shows the color as border, it can be applied via the CSS property "border" or "border-color".

```
.border, #border, table{ border:4px solid rgb(190, 143, 137) }
```


If only the border color should be changed use the property `border-color`.

```
.border{ border-color:rgb(190, 143, 137) }
```

If you want to add a box shadow in that color use:

Here you see how a box with a 4 pixel `rgb(190, 143, 137)` colored shadow looks like.

```
.boxshadow{ -moz-box-shadow:4px 4px 4px  
4px rgb(190, 143, 137); -webkit-box-  
shadow:4px 4px 4px 4px rgb(190, 143, 137);  
box-shadow:4px 4px 4px 4px rgb(190, 143,  
137) }
```

Background

The CSS property to change the background color of an element to HunterLab 56.9194, 11.9484, 10.6301 is called "background". The background property can be set on classes, ids or directly on the HTML element.

```
.background, #background, body{  
background: rgb(190, 143, 137) }
```

If only the background color should be changed can be used:

```
.background{ background-color: rgb(190,  
143, 137) }
```

This example shows the color as background, it is applied via the CSS property "background".

To optimize and compress your CSS code, you can use our [online CSS compressor and optimizer](#) based on csstidy. If you want to create a linear or radial gradient as background or border, check our [CSS Gradient Generator](#).

Hey! You found this booklet interesting? Support Converting Colors with the new Membership Option!

The pro membership hides all ads, plus gives you double the colors in the color bucket, and more awesome pro features!

[Learn more, Memberships starting at \\$2.50/m!](#)

**Follow me
on Twitter!**

@ConvertingColor