

Converting Colors

HunterLab(56.9278, 6.9290,
6.8774)

Have a look what the booklet for
HunterLab(56.9278, 6.9290, 6.8774)
contains.

HunterLab(56.9278, 6.9290, 6.8774)	3
<i>Conversions</i>	4
<i>Details</i>	6
<i>Harmonies</i>	12
<i>Previews</i>	24
<i>Color Blindness Simulation</i>	28
<i>CSS Examples</i>	31

Color

**HunterLab(56.9278, 6.9290,
6.8774)**

Conversions

Conversions Part 1

Format	Color
Hex	B29392
RGB	178, 147, 146
RGB Percent	70%, 58%, 57%
CMY	0.3020, 0.4235, 0.4274
CMYK	0.00, 0.17, 0.18, 0.30
HSL	2°, 17%, 64%
HSV	2°, 18%, 70%
XYZ	33.9821, 32.4077, 31.6584
YIQ	156.1550, 18.7970, 6.2610

Conversions

Conversions Part 2

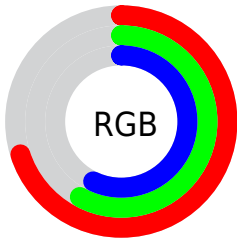
Format	Color
R_{YB}	178, 147, 146
Decimal	11703186
CIE _{Lab}	63.68, 11.43, 4.88
CIE _{LCh}	64, 12.429, 23.123
Yxy	32.4092, 0.3466, 0.3305
Android (android.graphics.Color)	4289893266 (0xFFB29392)
YUV	156.1550, -5.0064, 19.1581
Hunter-Lab	56.9278, 6.9290, 6.8774

Details

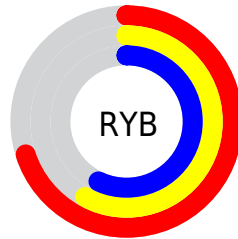
The HunterLab color $56.9278, 6.9290, 6.8774$ is a light color, and the websafe version is hex $CC9999$. A complement of this color would be $63.8503, -12.1817, 0.0195$, and the grayscale version is $57.7371, -3.0807, 3.1370$.

A 20% lighter version of the original color is $79.6466, 6.8392, 8.5202$, and $36.8378, 7.0138, 5.0110$ is the 20% darker color. If you saturate the color by 10%, you get $51.8951, 13.1321, 8.7959$, and if you desaturate by 10%, it is $62.2715, 0.9908, 5.0380$.

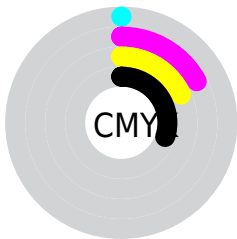
Distribution



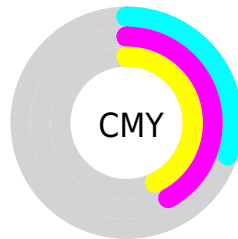
- Red (70%)
- Green (58%)
- Blue (57%)



- Red (70%)
- Yellow (58%)
- Blue (57%)



- Cyan (0%)
- Magenta (17%)
- Yellow (18%)
- Black (30%)



- Cyan (30%)
- Magenta (42%)
- Yellow (43%)

Brightness & Saturation Gradients

These gradients show how the HunterLab color 56.9278, 6.9290, 6.8774 changes by changing the brightness by 10 percent. The first figure shows a shift by +10% for each color and the second figure -10%.

Similar to the brightness gradients but the following saturation gradients show a change of the HunterLab color 56.9278, 6.9290, 6.8774 by changing the saturation by 10% instead.

■ 56.9278, 6.9290,
6.8774

■ 56.9278, 6.9290,
6.8774

176.9122, 4.8443,
15.2511

■ 46.5556, 6.8788,
6.0504

■ 79.6568, 6.8208,
8.5938

■ 36.9022, 6.7511,
5.2404

■ 91.9395, 6.6791,
9.4826

■ 28.0273, 6.5312,
4.4457

104.7957, 6.4850,
10.3923

■ 20.0062, 6.2015,
3.6607

118.2009, 6.2424,
11.3228

■ 12.9420, 5.7357,
2.8743

132.1334, 5.9544,
12.2742

■ 6.3825, 7.4628,
3.5172

146.5741, 5.6239,

0.0000, NaN, NaN

13.2462

0.0000, NaN, NaN

161.5055, 5.2531,
14.2386

0.0000, NaN, NaN

■ 56.9278, 6.9290,
6.8774

■ 56.9278, 6.9290,
6.8774

■ 51.8951, 13.1321,
8.7959

■ 62.2715, 0.9908,
5.0380

■ 47.2262, 19.5883,
10.7793

■ 67.8768, -4.6899,
3.2744

■ 42.9919, 26.2200,
12.7960

■ 73.7089, -10.1412,
1.5819

■ 39.2738, 32.8538,
14.7801

■ 79.7388, -15.3934,
-0.0480

■ 36.1609, 39.1786,
16.6211

■ 85.9432, -20.4761,
-1.6236

■ 33.7359, 44.7413,
18.1670

■ 92.3034, -25.4163,
-3.1531

■ 32.0520, 49.0287,
19.2599

■ 93.9175, -27.1887,
-2.3302

■ 31.0963, 51.6516,
19.8685

■ 30.9616, 52.0169,
19.9890

Harmonies

Analogous

The Analogous color harmony consists of three colors that are next to each other on the color wheel.



56.9291, 7.7480, 1.8914



56.9278, 6.9290, 6.8774



56.9291, 3.3895, 10.5143

Triad

The Triadic color harmony groups three colors that are evenly spaced from another and form a triangle on the color wheel.



56.9291, 6.9271, 6.8783



56.9291, -11.1879, 8.7656



56.9291, -4.2908, -7.7202

Complementary

The Complementary color scheme is a pair of colors which are on the opposite of each other on the color wheel.



56.9278, 6.9290, 6.8774



63.8503, -12.1817, 0.0195

Split Complementary

Split-complementary colors differ from the complementary color scheme. The scheme consists of three colors, the original color and two neighbors of the complement color.



56.9291, -9.1975, -5.4715



56.9278, 6.9290, 6.8774



56.9291, -13.0813, 4.2803

Square

The Square scheme is like the rectangle color scheme, but the four colors are evenly spaced on the color wheel.



56.9291, 6.9271, 6.8783



56.9291, -7.1001, 11.5301



56.9291, -12.3665, -0.9591



56.9291, 1.1358, -6.8590

Rectangle

The Rectangle color scheme consists of four colors that form a rectangle on the color wheel.



56.9278, 6.9290, 6.8774



56.9291, 0.0357, 11.8414



56.9291, -12.3665, -0.9591



56.9291, -6.0530, -7.2964

Sweetspot

The Sweet Spot groups the original color and five complimentary colors.



56.9291, 6.9271, 6.8783



86.0050, -0.9110, 6.0875



57.6334, 12.5649, -7.3087



40.2375, -0.1759, 2.9438



95.4677, -5.0939, 5.1869



42.2927, -2.2566, 2.2978

Same Dimension

The Same Dimension uses a secret algorithm to generate beautiful new colors.



56.9291, 6.9271, 6.8783



73.6223, 12.9634, 10.3874



61.2941, -0.7856, 11.4499



29.2345, 0.8429, 2.5089



26.2230, 43.8870, 16.9268



4.8004, 7.2917, 3.0857

Inverse Universe

The Inverse Universe completely reimagines the original color for something new.



63.8503, -12.1817, 0.0195



85.1450, -18.9197, -1.0527



59.1430, -4.7570, -5.8641



30.9595, -3.9069, 0.8033



48.5215, -24.6855, -7.3588



8.6884, -4.4769, -1.1954

Previews

White Background



This preview shows how the HunterLab color 56.9278, 6.9290, 6.8774 looks on a white background.

Color Contrast Check

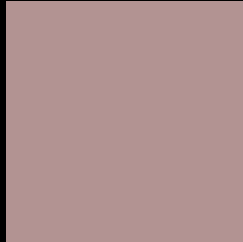
Large Text (above 18pt) WCAG AA × Fail

Any Text WCAG AA × Fail

Large Text (above 18pt) WCAG AAA × Fail

Any Text WCAG AAA × Fail

Black Background



This preview shows how the HunterLab color 56.9278, 6.9290, 6.8774 looks on a black background.

Color Contrast Check

Large Text (above 18pt) WCAG AA ✓ Pass

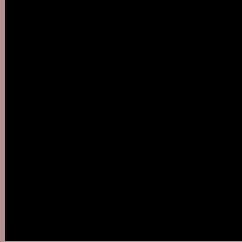
Any Text WCAG AA ✓ Pass

Large Text (above 18pt) WCAG AAA ✓ Pass

Any Text WCAG AAA ✓ Pass

If you want to check with other color combinations, try the [Color Contrast Checker](#).

HunterLab 56.9278, 6.9290, 6.8774 Background



This preview shows how black text looks on a background with the HunterLab color 56.9278, 6.9290, 6.8774.



This preview shows how white text looks on a background with the HunterLab color 56.9278, 6.9290,

6.8774.

Color Blindness Simulation

Color vision deficiency is a very complex topic, and I could not describe the different causes any better than Wikipedia does, so if you want to learn more, you should check out their [article about color blindness](#).

Dichromacy



Original Color

56.9278, 6.9290, 6.8774

Protanopia

57.0809, -2.4463, 5.1593

Deuteranopia

56.9688, 4.2338, 6.8759



Tritanopia

56.8057, 9.9469, 1.8842

Trichromacy



Original Color

56.9278, 6.9290, 6.8774

Protanomaly

56.8353, 1.0659, 5.3785

Deuteranomaly

56.8938, 5.4058, 6.8129

Tritanomaly

56.9573, 8.8182, 3.8800

Monochromacy



Original Color

56.9278, 6.9290, 6.8774

Achromatopsia

57.6586, -3.0765, 3.1327

Achromatomaly

57.3951, 0.2255, 4.6840

CSS Examples

Text

The CSS property to change the color of the text to HunterLab 56.9278, 6.9290, 6.8774 is called "color". The color property can be set on classes, ids or directly on the HTML element.

This example shows how text in the color `rgb(178, 147, 146)` looks like.

```
.text, #text, p{  
    color:rgb(178, 147, 146)  
}
```

If you want to add a text shadow in that color use the text-shadow property, you can generate a text shadow directly with our [CSS Text Shadow Generator](#).

Here you see how black text with a 4 pixel rgb(178, 147, 146) colored shadow looks like.

```
.shadow{ text-shadow: 4px 4px 2px rgb(178, 147, 146) }
```

Border

The CSS property to change the border of an element to HunterLab 56.9278, 6.9290, 6.8774 is called "border".

The border property can be set on classes, ids or directly on the HTML element.

This example shows the color as border, it can be applied via the CSS property "border" or "border-color".

```
.border, #border, table{ border:4px solid rgb(178, 147, 146) }
```


If only the border color should be changed use the property `border-color`.

```
.border{ border-color:rgb(178, 147, 146) }
```

If you want to add a box shadow in that color use:

Here you see how a box with a 4 pixel `rgb(178, 147, 146)` colored shadow looks like.

```
.boxshadow{ -moz-box-shadow:4px 4px 4px  
4px rgb(178, 147, 146); -webkit-box-  
shadow:4px 4px 4px 4px rgb(178, 147, 146);  
box-shadow:4px 4px 4px 4px rgb(178, 147,  
146) }
```

Background

The CSS property to change the background color of an element to HunterLab 56.9278, 6.9290, 6.8774 is called "background". The background property can be set on classes, ids or directly on the HTML element.

```
.background, #background, body{  
background: rgb(178, 147, 146) }
```

If only the background color should be changed can be used:

```
.background{ background-color: rgb(178,  
147, 146) }
```

This example shows the color as background, it is applied via the CSS property "background".

To optimize and compress your CSS code, you can use our [online CSS compressor and optimizer](#) based on csstidy. If you want to create a linear or radial gradient as background or border, check our [CSS Gradient Generator](#).

Hey! You found this booklet interesting? Support Converting Colors with the new Membership Option!

The pro membership hides all ads, plus gives you double the colors in the color bucket, and more awesome pro features!

[Learn more, Memberships starting at \\$2.50/m!](#)

**Follow me
on Twitter!**

@ConvertingColor