

Converting Colors

HunterLab(56.9724, 9.5388,
9.4529)

Have a look what the booklet for
HunterLab(56.9724, 9.5388, 9.4529)
contains.

HunterLab(56.9724, 9.5388, 9.4529)	3
<i>Conversions</i>	4
<i>Details</i>	6
<i>Harmonies</i>	12
<i>Previews</i>	24
<i>Color Blindness Simulation</i>	28
<i>CSS Examples</i>	31

Color

**HunterLab(56.9724, 9.5388,
9.4529)**

Conversions

Conversions Part 1

Format	Color
Hex	B9918C
RGB	185, 145, 140
RGB Percent	73%, 57%, 55%
CMY	0.2745, 0.4314, 0.4510
CMYK	0.00, 0.22, 0.24, 0.27
HSL	7°, 24%, 64%
HSV	7°, 24%, 73%
XYZ	34.8666, 32.4585, 29.2384
YIQ	156.3900, 25.4450, 6.9250

Conversions

Conversions Part 2

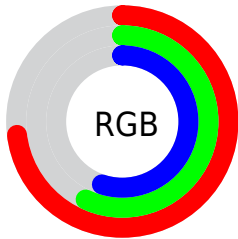
Format	Color
R _Y B	185, 146, 140
Decimal	12161420
CIE Lab	63.72, 14.30, 8.42
CIE LCh	64, 16.597, 30.480
Yxy	32.4600, 0.3611, 0.3361
Android (android.graphics.Color)	4290351500 (0xFFB9918C)
YUV	156.3900, -8.0803, 25.0910
Hunter-Lab	56.9724, 9.5388, 9.4529

Details

The HunterLab color $56.9724, 9.5388, 9.4529$ is a light color, and the websafe version is hex $CC9999$. A complement of this color would be $64.5907, -13.8414, -2.5742$, and the grayscale version is $57.8430, -3.0864, 3.1427$.

A 20% lighter version of the original color is $79.7616, 9.8631, 11.3821$, and $36.8360, 9.2332, 7.2907$ is the 20% darker color. If you saturate the color by 10%, you get $52.2421, 15.4612, 11.7492$, and if you desaturate by 10%, it is $62.0054, 3.8945, 7.1278$.

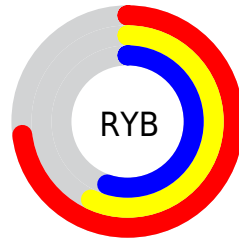
Distribution



Red (73%)

Green (57%)

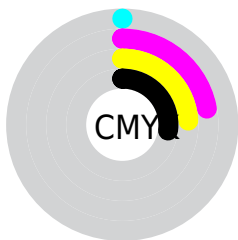
Blue (55%)



Red (73%)

Yellow (57%)

Blue (55%)

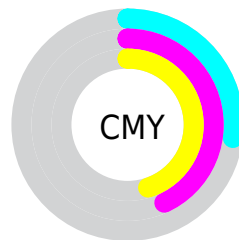


Cyan (0%)

Magenta (22%)

Yellow (24%)

Black (27%)



Cyan (27%)

Magenta (43%)

Yellow (45%)

Brightness & Saturation Gradients

These gradients show how the HunterLab color 56.9724, 9.5388, 9.4529 changes by changing the brightness by 10 percent. The first figure shows a shift by +10% for each color and the second figure -10%.

Similar to the brightness gradients but the following saturation gradients show a change of the HunterLab color 56.9724, 9.5388, 9.4529 by changing the saturation by 10% instead.

■ 56.9724, 9.5388,
9.4529

■ 56.9724, 9.5388,
9.4529

176.9773, 8.5057,
19.2130

■ 46.5973, 9.3449,
8.4242

■ 79.7067, 9.6968,
11.5330

■ 36.9408, 9.0653,
7.3948

■ 91.9919, 9.6797,
12.5881

■ 28.0625, 8.6839,
6.3577

■ 104.8504, 9.6053,
13.6558

■ 20.0377, 8.1815,
5.2987

118.2578, 9.4780,
14.7373

■ 12.9692, 7.5308,
4.1916

132.1925, 9.3015,
15.8333

■ 6.4185, 9.3676,
4.4929

146.6352, 9.0789,

0.0000, NaN, NaN

16.9444

0.0000, NaN, NaN

161.5687, 8.8128,
18.0709

0.0000, NaN, NaN

■ 56.9724, 9.5388,
9.4529

■ 56.9724, 9.5388,
9.4529

■ 52.2421, 15.4612,
11.7492

■ 62.0054, 3.8945,
7.1278

■ 47.8625, 21.6464,
13.9756

■ 67.2949, -1.4742,
4.7933

■ 43.8965, 28.0166,
16.0710

■ 72.8076, -6.5928,
2.4618

■ 40.4145, 34.4101,
17.9439

■ 78.5156, -11.4900,
0.1387

■ 37.4905, 40.5512,
19.4741

■ 84.3964, -16.1950,
-2.1746

■ 35.1913, 46.0495,
20.5324

■ 90.4312, -20.7350,
-4.4783

■ 33.5575, 50.4627,
21.0284

■ 94.3686, -25.5175,
-1.7375

■ 32.9166, 52.3054,
21.1988

Harmonies

Analogous

The Analogous color harmony consists of three colors that are next to each other on the color wheel.



56.9737, 11.6496, 3.2127



56.9724, 9.5388, 9.4529



56.9737, 4.0236, 13.5195

Triad

The Triadic color harmony groups three colors that are evenly spaced from another and form a triangle on the color wheel.



56.9737, 9.5367, 9.4538



56.9737, -14.7256, 9.2832



56.9737, -2.9257, -11.8951

Complementary

The Complementary color scheme is a pair of colors which are on the opposite of each other on the color wheel.



56.9724, 9.5388, 9.4529



64.5907, -13.8414, -2.5742

Split Complementary

Split-complementary colors differ from the complementary color scheme. The scheme consists of three colors, the original color and two neighbors of the complement color.



56.9737, -9.7812, -9.7534



56.9724, 9.5388, 9.4529



56.9737, -16.3829, 2.9896

Square

The Square scheme is like the rectangle color scheme, but the four colors are evenly spaced on the color wheel.



56.9737, 9.5367, 9.4538



56.9737, -9.9746, 13.4300



56.9737, -14.6179, -4.0792



56.9737, 4.2367, -9.6173

Rectangle

The Rectangle color scheme consists of four colors that form a rectangle on the color wheel.



56.9724, 9.5388, 9.4529



56.9737, -0.7079, 14.7385



56.9737, -14.6179, -4.0792



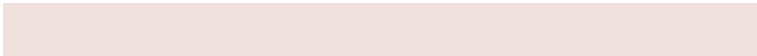
56.9737, -5.3411, -11.6655

Sweetspot

The Sweet Spot groups the original color and five complimentary colors.



56.9737, 9.5367, 9.4538



88.0519, -0.0032, 7.2866



56.9092, 18.5802, -9.8731



40.6872, 0.1936, 3.4689



96.5975, -5.1542, 5.2483



43.2801, -2.3093, 2.3515

Same Dimension

The Same Dimension uses a secret algorithm to generate beautiful new colors.



56.9737, 9.5367, 9.4538



72.9312, 16.7993, 14.2416



63.1233, -1.4252, 15.5667



30.2799, 0.5538, 2.7942



27.2640, 42.8243, 17.5496



5.6151, 6.5170, 3.5741

Inverse Universe

The Inverse Universe completely reimagines the original color for something new.



64.5907, -13.8414, -2.5742



85.1687, -20.8846, -5.1116



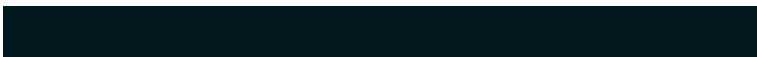
57.9071, -3.3151, -11.3713



31.6788, -3.7165, 0.5906



45.4258, -20.2084, -13.1543



8.8113, -4.1491, -2.0566

Previews

White Background



This preview shows how the HunterLab color 56.9724, 9.5388, 9.4529 looks on a white background.

Color Contrast Check

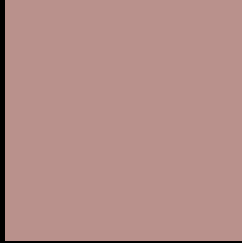
Large Text (above 18pt) WCAG AA × Fail

Any Text WCAG AA × Fail

Large Text (above 18pt) WCAG AAA × Fail

Any Text WCAG AAA × Fail

Black Background



This preview shows how the HunterLab color 56.9724, 9.5388, 9.4529 looks on a black background.

Color Contrast Check

Large Text (above 18pt) WCAG AA ✓ Pass

Any Text WCAG AA ✓ Pass

Large Text (above 18pt) WCAG AAA ✓ Pass

Any Text WCAG AAA ✓ Pass

If you want to check with other color combinations, try the [Color Contrast Checker](#).

HunterLab 56.9724, 9.5388, 9.4529 Background



This preview shows how black text looks on a background with the HunterLab color 56.9724, 9.5388, 9.4529.



This preview shows how white text looks on a background with the HunterLab color 56.9724, 9.5388,

Color Blindness Simulation

Color vision deficiency is a very complex topic, and I could not describe the different causes any better than Wikipedia does, so if you want to learn more, you should check out their [article about color blindness](#).

Dichromacy



Original Color

56.9724, 9.5388, 9.4529

Protanopia

57.1219, -2.5802, 7.3483

Deuteranopia

56.9850, 3.9175, 9.7684



Tritanopia

57.0463, 13.2796, 3.6099

Trichromacy



Original Color

56.9724, 9.5388, 9.4529

Protanomaly

57.0538, 1.4817, 8.1771

Deuteranomaly

57.1206, 5.7895, 9.9450

Tritanomaly

57.0575, 11.6708, 5.8165

Monochromacy



Original Color

56.9724, 9.5388, 9.4529

Achromatopsia

57.6586, -3.0765, 3.1327

Achromatomaly

57.3358, 1.3705, 5.5165

CSS Examples

Text

The CSS property to change the color of the text to HunterLab 56.9724, 9.5388, 9.4529 is called "color". The color property can be set on classes, ids or directly on the HTML element.

This example shows how text in the color `rgb(185, 145, 140)` looks like.

```
.text, #text, p{  
    color:rgb(185, 145, 140)  
}
```

If you want to add a text shadow in that color use the text-shadow property, you can generate a text shadow directly with our [CSS Text Shadow Generator](#).

Here you see how black text with a 4 pixel rgb(185, 145, 140) colored shadow looks like.

```
.shadow{ text-shadow: 4px 4px 2px rgb(185, 145, 140) }
```

Border

The CSS property to change the border of an element to HunterLab 56.9724, 9.5388, 9.4529 is called "border".

The border property can be set on classes, ids or directly on the HTML element.

This example shows the color as border, it can be applied via the CSS property "border" or "border-color".

```
.border, #border, table{ border:4px solid rgb(185, 145, 140) }
```


If only the border color should be changed use the property `border-color`.

```
.border{ border-color:rgb(185, 145, 140) }
```

If you want to add a box shadow in that color use:

Here you see how a box with a 4 pixel `rgb(185, 145, 140)` colored shadow looks like.

```
.boxshadow{ -moz-box-shadow:4px 4px 4px  
4px rgb(185, 145, 140); -webkit-box-  
shadow:4px 4px 4px 4px rgb(185, 145, 140);  
box-shadow:4px 4px 4px 4px rgb(185, 145,  
140) }
```

Background

The CSS property to change the background color of an element to HunterLab 56.9724, 9.5388, 9.4529 is called "background". The background property can be set on classes, ids or directly on the HTML element.

```
.background, #background, body{  
background: rgb(185, 145, 140) }
```

If only the background color should be changed can be used:

```
.background{ background-color: rgb(185,  
145, 140) }
```

This example shows the color as background, it is applied via the CSS property "background".

To optimize and compress your CSS code, you can use our [online CSS compressor and optimizer](#) based on csstidy. If you want to create a linear or radial gradient as background or border, check our [CSS Gradient Generator](#).

Hey! You found this booklet interesting? Support Converting Colors with the new Membership Option!

The pro membership hides all ads, plus gives you double the colors in the color bucket, and more awesome pro features!

[Learn more, Memberships starting at \\$2.50/m!](#)

**Follow me
on Twitter!**

@ConvertingColor