

Converting Colors

HunterLab(57.1117, 14.0868,
19.8268)

Have a look what the booklet for
HunterLab(57.1117, 14.0868,
19.8268) contains.

HunterLab(57.1095, 14.0840, 19.8240)	3
<i>Conversions</i>	4
<i>Details</i>	6
<i>Harmonies</i>	12
<i>Previews</i>	24
<i>Color Blindness Simulation</i>	28
<i>CSS Examples</i>	31

Color

**HunterLab(57.1095, 14.0840,
19.8240)**

Conversions

Conversions Part 1

Format	Color
Hex	C98D6F
RGB	201, 141, 111
RGB Percent	79%, 55%, 44%
CMY	0.2118, 0.4470, 0.5647
CMYK	0.00, 0.30, 0.45, 0.21
HSL	20°, 45%, 61%
HSV	20°, 45%, 79%
XYZ	36.4815, 32.6149, 19.4115
YIQ	155.5200, 45.3900, 3.3900

Conversions

Conversions Part 2

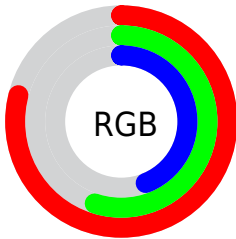
Format	Color
R _Y B	201, 156, 111
Decimal	13208943
CIE Lab	63.85, 19.19, 25.11
CIE LCh	64, 31.603, 52.602
Yxy	32.6165, 0.4122, 0.3685
Android (android.graphics.Color)	4291399023 (0xFFC98D6F)
YUV	155.5200, -21.9484, 39.8860
Hunter-Lab	57.1095, 14.0840, 19.8240

Details

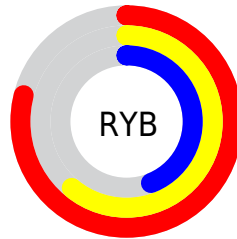
The HunterLab color **57.1095, 14.0840, 19.8240** is a dark color, and the websafe version is hex **CC9966**. A complement of this color would be **60.5977, -12.7854, -16.9494**, and the grayscale version is **57.5379, -3.0701, 3.1261**.

A 20% lighter version of the original color is **79.3313, 12.7475, 23.2101**, and **37.2301, 13.0714, 15.6808** is the 20% darker color. If you saturate the color by 10%, you get **53.3919, 19.0273, 22.2668**, and if you desaturate by 10%, it is **61.0769, 9.4720, 16.9216**.

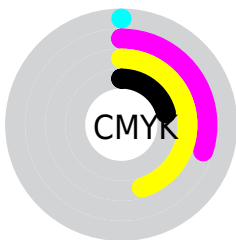
Distribution



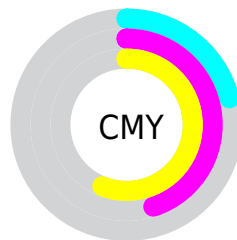
- Red (79%)
- Green (55%)
- Blue (44%)



- Red (79%)
- Yellow (61%)
- Blue (44%)



- Cyan (0%)
- Magenta (30%)
- Yellow (45%)
- Black (21%)



- Cyan (21%)
- Magenta (45%)
- Yellow (56%)

Brightness & Saturation Gradients

These gradients show how the HunterLab color 57.1095, 14.0840, 19.8240 changes by changing the brightness by 10 percent. The first figure shows a shift by +10% for each color and the second figure -10%.

Similar to the brightness gradients but the following saturation gradients show a change of the HunterLab color 57.1095, 14.0840, 19.8240 by changing the saturation by 10% instead.

■ 57.1095, 14.0840,
19.8240

■ 57.1095, 14.0840,
19.8240

177.1774, 14.8050,
36.6129

■ 46.7256, 13.6533,
17.7494

■ 79.8601, 14.6828,
23.7735

■ 37.0596, 13.1253,
15.5760

■ 92.1528, 14.8730,
25.6772

■ 28.1709, 12.4822,
13.2687

■ 105.0185, 14.9983,
27.5476

■ 20.1346, 11.7040,
10.7727

■ 118.4328, 15.0638,
29.3923

■ 13.0531, 10.7664,
9.1371

132.3741, 15.0737,
31.2169

■ 6.5279, 12.4748,
4.5695

146.8232, 15.0319,

0.0000, NaN, NaN

33.0262

0.0000, NaN, NaN

161.7628, 14.9414,
34.8238

0.0000, NaN, NaN

■ 57.1095, 14.0840,
19.8240

■ 57.1095, 14.0840,
19.8240

■ 53.3919, 19.0273,
22.2668

■ 61.0769, 9.4720,
16.9216

■ 49.9513, 24.2887,
24.1688

■ 65.2618, 5.1967,
13.6280

■ 46.8231, 29.8085,
25.4517

■ 69.6415, 1.2391,
10.0048

■ 44.0423, 35.4793,
26.0515

■ 74.1947, -2.4244,
6.1022

■ 41.6407, 41.1302,
25.9493

■ 78.9035, -5.8204,
1.9613

■ 40.5376, 43.9641,
25.7487

■ 83.7526, -8.9757,
-2.3845

■ 88.7288, -11.9156,
-6.9083

■ 93.2167, -18.0467,
-3.0510

■ 95.4764, -21.4491,
-0.2939

Harmonies

Analogous

The Analogous color harmony consists of three colors that are next to each other on the color wheel.



57.1109, 23.7386, 12.0313



57.1095, 14.0840, 19.8240



57.1109, 0.4273, 22.9908

Triad

The Triadic color harmony groups three colors that are evenly spaced from another and form a triangle on the color wheel.



57.1109, 14.0813, 19.8248



57.1109, -27.1821, 6.2824



57.1109, 7.5739, -25.6503

Complementary

The Complementary color scheme is a pair of colors which are on the opposite of each other on the color wheel.



57.1095, 14.0840, 19.8240



60.5977, -12.7854, -16.9494

Split Complementary

Split-complementary colors differ from the complementary color scheme. The scheme consists of three colors, the original color and two neighbors of the complement color.



57.1109, -6.4468, -28.2372



57.1095, 14.0840, 19.8240



57.1109, -25.6617, -7.5357

Square

The Square scheme is like the rectangle color scheme, but the four colors are evenly spaced on the color wheel.



57.1109, 14.0813, 19.8248



57.1109, -22.7454, 16.4795



57.1109, -18.3739, -20.9645



57.1109, 19.7383, -14.5621

Rectangle

The Rectangle color scheme consists of four colors that form a rectangle on the color wheel.



57.1095, 14.0840, 19.8240



57.1109, -8.7577, 22.7509



57.1109, -18.3739, -20.9645



57.1109, 2.8904, -27.6357

Sweetspot

The Sweet Spot groups the original color and five complimentary colors.



57.1109, 14.0813, 19.8248



92.0587, 0.8327, 12.3004



51.6981, 37.7030, -11.6699



41.9839, 0.8991, 6.2033

0.0000, NaN, NaN



46.2646, -2.4686, 2.5136

Same Dimension

The Same Dimension uses a secret algorithm to generate beautiful new colors.



57.1109, 14.0813, 19.8248



69.8708, 24.8840, 29.1301



69.7732, -8.2195, 30.0703



33.4740, -0.3594, 3.6824



32.3792, 34.2064, 20.5508



7.9389, 5.1603, 4.9823

Inverse Universe

The Inverse Universe completely reimagines the original color for something new.



60.5977, -12.7854, -16.9494



75.2790, -17.3295, -28.4301



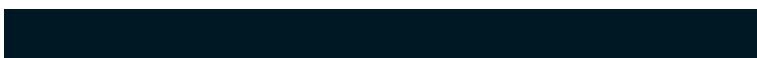
47.4538, 9.3370, -39.6367



33.8359, -3.0962, -0.0874



36.8028, -5.8377, -33.3984



8.7780, -2.4210, -5.7454

Previews

White Background



This preview shows how the HunterLab color 57.1095, 14.0840, 19.8240 looks on a white background.

Color Contrast Check

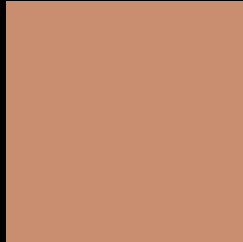
Large Text (above 18pt) WCAG AA × Fail

Any Text WCAG AA × Fail

Large Text (above 18pt) WCAG AAA × Fail

Any Text WCAG AAA × Fail

Black Background



This preview shows how the HunterLab color 57.1095, 14.0840, 19.8240 looks on a black background.

Color Contrast Check

Large Text (above 18pt) WCAG AA ✓ Pass

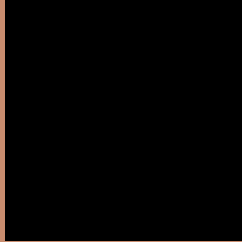
Any Text WCAG AA ✓ Pass

Large Text (above 18pt) WCAG AAA ✓ Pass

Any Text WCAG AAA ✓ Pass

If you want to check with other color combinations, try the [Color Contrast Checker](#).

HunterLab 57.1095, 14.0840, 19.8240 Background



This preview shows how black text looks on a background with the HunterLab color 57.1095, 14.0840, 19.8240.



This preview shows how white text looks on a background with the HunterLab color 57.1095, 14.0840,

Color Blindness Simulation

Color vision deficiency is a very complex topic, and I could not describe the different causes any better than Wikipedia does, so if you want to learn more, you should check out their [article about color blindness](#).

Dichromacy



Original Color

57.1095, 14.0840, 19.8240

Protanopia

57.3010, -4.7727, 17.8112

Deuteranopia

57.0052, 4.1107, 19.8552



Tritanopia

57.0272, 21.9449, 7.2509

Trichromacy



Original Color

57.1095, 14.0840, 19.8240

Protanomaly

57.1264, 1.8653, 18.3997

Deuteranomaly

56.8540, 7.8024, 19.7858

Tritanomaly

57.0674, 18.8372, 12.4399

Monochromacy



Original Color

57.1095, 14.0840, 19.8240

Achromatopsia

57.6586, -3.0765, 3.1327

Achromatomaly

57.2689, 2.0548, 9.6383

CSS Examples

Text

The CSS property to change the color of the text to HunterLab 57.1095, 14.0840, 19.8240 is called "color". The color property can be set on classes, ids or directly on the HTML element.

This example shows how text in the color `rgb(201, 141, 111)` looks like.

```
.text, #text, p{  
    color:rgb(201, 141, 111)  
}
```

If you want to add a text shadow in that color use the text-shadow property, you can generate a text shadow directly with our [CSS Text Shadow Generator](#).

Here you see how black text with a 4 pixel rgb(201, 141, 111) colored shadow looks like.

```
.shadow{ text-shadow: 4px 4px 2px rgb(201, 141, 111) }
```

Border

The CSS property to change the border of an element to HunterLab 57.1095, 14.0840, 19.8240 is called "border". The border property can be set on classes, ids or directly on the HTML element.

This example shows the color as border, it can be applied via the CSS property "border" or "border-color".

```
.border, #border, table{ border:4px solid rgb(201, 141, 111) }
```


If only the border color should be changed use the property `border-color`.

```
.border{ border-color:rgb(201, 141, 111) }
```

If you want to add a box shadow in that color use:

Here you see how a box with a 4 pixel `rgb(201, 141, 111)` colored shadow looks like.

```
.boxshadow{ -moz-box-shadow:4px 4px 4px  
4px rgb(201, 141, 111); -webkit-box-  
shadow:4px 4px 4px 4px rgb(201, 141, 111);  
box-shadow:4px 4px 4px 4px rgb(201, 141,  
111) }
```

Background

The CSS property to change the background color of an element to HunterLab 57.1095, 14.0840, 19.8240 is called "background". The background property can be set on classes, ids or directly on the HTML element.

```
.background, #background, body{  
background: rgb(201, 141, 111) }
```

If only the background color should be changed can be used:

```
.background{ background-color: rgb(201,  
141, 111) }
```

This example shows the color as background, it is applied via the CSS property "background".

To optimize and compress your CSS code, you can use our [online CSS compressor and optimizer](#) based on csstidy. If you want to create a linear or radial gradient as background or border, check our [CSS Gradient Generator](#).

Hey! You found this booklet interesting? Support Converting Colors with the new Membership Option!

The pro membership hides all ads, plus gives you double the colors in the color bucket, and more awesome pro features!

[Learn more, Memberships starting at \\$2.50/m!](#)

**Follow me
on Twitter!**

@ConvertingColor