

Converting Colors

HunterLab(57.1711, 10.9210,
14.5969)

Have a look what the booklet for
HunterLab(57.1711, 10.9210,
14.5969) contains.

HunterLab(57.1711, 10.9210, 14.5969)	3
<i>Conversions</i>	4
<i>Details</i>	6
<i>Harmonies</i>	12
<i>Previews</i>	24
<i>Color Blindness Simulation</i>	28
<i>CSS Examples</i>	31

Color

**HunterLab(57.1711, 10.9210,
14.5969)**

Conversions

Conversions Part 1

Format	Color
Hex	C0907F
RGB	192, 144, 127
RGB Percent	75%, 56%, 50%
CMY	0.2471, 0.4353, 0.5020
CMYK	0.00, 0.25, 0.34, 0.25
HSL	16°, 34%, 63%
HSV	16°, 34%, 75%
XYZ	35.5423, 32.6853, 24.5143
YIQ	156.4140, 34.0650, 4.8890

Conversions

Conversions Part 2

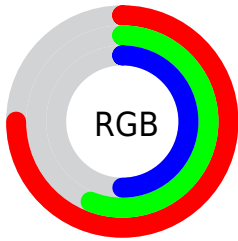
Format	Color
RYB	192, 150, 127
Decimal	12619903
CIELab	63.91, 15.80, 16.10
CIELCh	64, 22.558, 45.534
Yxy	32.6869, 0.3832, 0.3524
Android (android.graphics.Color)	4290809983 (0xFFC0907F)
YUV	156.4140, -14.5011, 31.2089
Hunter-Lab	57.1711, 10.9210, 14.5969

Details

The HunterLab color **57.1711, 10.9210, 14.5969** is a light color, and the websafe version is hex **CC9999**. A complement of this color would be **62.4311, -13.1975, -9.1215**, and the grayscale version is **57.8757, -3.0881, 3.1445**.

A 20% lighter version of the original color is **80.0047, 11.3882, 17.4979**, and **37.0096, 10.5021, 11.4421** is the 20% darker color. If you saturate the color by 10%, you get **53.1079, 15.9409, 17.2269**, and if you desaturate by 10%, it is **61.4850, 6.2053, 11.6929**.

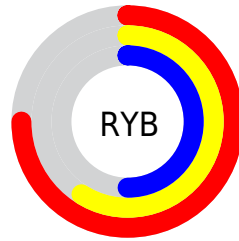
Distribution



Red (75%)

Green (56%)

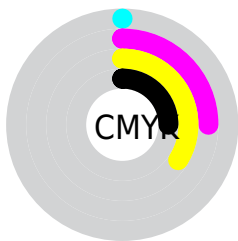
Blue (50%)



Red (75%)

Yellow (59%)

Blue (50%)

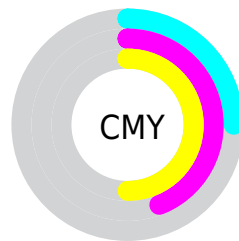


Cyan (0%)

Magenta (25%)

Yellow (34%)

Black (25%)



Cyan (25%)

Magenta (44%)

Yellow (50%)

Brightness & Saturation Gradients

These gradients show how the HunterLab color 57.1711, 10.9210, 14.5969 changes by changing the brightness by 10 percent. The first figure shows a shift by +10% for each color and the second figure -10%.

Similar to the brightness gradients but the following saturation gradients show a change of the HunterLab color 57.1711, 10.9210, 14.5969 by changing the saturation by 10% instead.

■ 57.1711, 10.9210,
14.5969

■ 57.1711, 10.9210,
14.5969

177.2672, 10.4225,
27.4984

■ 46.7832, 10.6547,
13.1041

■ 79.9290, 11.2134,
17.5084

■ 37.1129, 10.2992,
11.5678

■ 92.2250, 11.2595,
18.9418

■ 28.2195, 9.8375,
9.9676

■ 105.0939, 11.2460,
20.3681

■ 20.1781, 9.2502,
8.2695

118.5113, 11.1775,
21.7910

■ 13.0907, 8.5104,
6.6690

132.4556, 11.0577,
23.2134

■ 6.5763, 10.1190,
4.6034

146.9075, 10.8902,

0.0000, NaN, NaN

24.6376

0.0000, NaN, NaN

161.8499, 10.6776,
26.0655

0.0000, NaN, NaN

■ 57.1711, 10.9210,
14.5969

■ 57.1711, 10.9210,
14.5969

■ 53.1079, 15.9409,
17.2269

■ 61.4850, 6.2053,
11.6929

■ 49.3269, 21.2620,
19.5123

■ 66.0150, 1.7903,
8.5663

■ 45.8701, 26.8375,
21.3727

■ 70.7368, -2.3477,
5.2598

■ 42.7819, 32.5712,
22.7186

■ 75.6285, -6.2348,
1.8054

■ 40.1075, 38.2980,
23.4681

■ 80.6721, -9.8978,
-1.7726

■ 37.8873, 43.7748,
23.5779

■ 85.8522, -13.3626,
-5.4557

■ 36.7522, 46.8506,
23.4667

■ 90.9258, -17.9458,
-5.9770

■ 94.8401, -23.7797,
-1.1210

Harmonies

Analogous

The Analogous color harmony consists of three colors that are next to each other on the color wheel.



57.1724, 16.4921, 7.7576



57.1711, 10.9210, 14.5969



57.1724, 1.7857, 18.0311

Triad

The Triadic color harmony groups three colors that are evenly spaced from another and form a triangle on the color wheel.



57.1724, 10.9187, 14.5978



57.1724, -20.3625, 7.4584



57.1724, 2.1405, -17.2564

Complementary

The Complementary color scheme is a pair of colors which are on the opposite of each other on the color wheel.



57.1711, 10.9210, 14.5969



62.4311, -13.1975, -9.1215

Split Complementary

Split-complementary colors differ from the complementary color scheme. The scheme consists of three colors, the original color and two neighbors of the complement color.



57.1724, -7.7372, -17.3736



57.1711, 10.9210, 14.5969



57.1724, -20.2819, -1.9593

Square

The Square scheme is like the rectangle color scheme, but the four colors are evenly spaced on the color wheel.



57.1724, 10.9187, 14.5978



57.1724, -16.0293, 14.4110



57.1724, -15.8010, -11.3976



57.1724, 11.1936, -11.1002

Rectangle

The Rectangle color scheme consists of four colors that form a rectangle on the color wheel.



57.1711, 10.9210, 14.5969



57.1724, -4.8799, 18.3764



57.1724, -15.8010, -11.3976



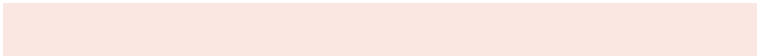
57.1724, -1.2041, -18.0343

Sweetspot

The Sweet Spot groups the original color and five complimentary colors.



57.1724, 10.9187, 14.5978



91.1808, 0.3110, 9.9128



54.3234, 26.9704, -10.7425



41.8190, 0.5142, 4.8806



98.8636, -5.2751, 5.3714



45.2661, -2.4153, 2.4594

Same Dimension

The Same Dimension uses a secret algorithm to generate beautiful new colors.



57.1724, 10.9187, 14.5978



72.6585, 19.9373, 22.4476



66.0997, -4.8324, 22.6352



32.3988, -0.0458, 3.3799



30.3291, 37.8917, 19.3520



7.1699, 5.5306, 4.5149

Inverse Universe

The Inverse Universe completely reimagines the original color for something new.



62.4311, -13.1975, -9.1215



81.2199, -19.5780, -16.2579



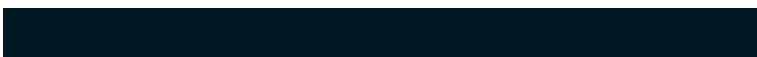
52.9512, 2.1531, -23.1732



33.1181, -3.3127, 0.1464



39.5792, -10.8403, -26.0694



8.8532, -3.1298, -4.3094

Previews

White Background



This preview shows how the HunterLab color 57.1711, 10.9210, 14.5969 looks on a white background.

Color Contrast Check

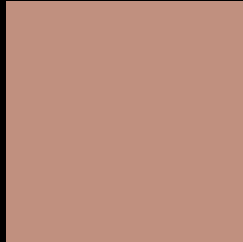
Large Text (above 18pt) WCAG AA × Fail

Any Text WCAG AA × Fail

Large Text (above 18pt) WCAG AAA × Fail

Any Text WCAG AAA × Fail

Black Background



This preview shows how the HunterLab color 57.1711, 10.9210, 14.5969 looks on a black background.

Color Contrast Check

Large Text (above 18pt) WCAG AA ✓ Pass

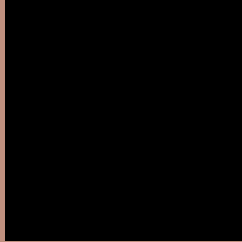
Any Text WCAG AA ✓ Pass

Large Text (above 18pt) WCAG AAA ✓ Pass

Any Text WCAG AAA ✓ Pass

If you want to check with other color combinations, try the [Color Contrast Checker](#).

HunterLab 57.1711, 10.9210, 14.5969 Background



This preview shows how black text looks on a background with the HunterLab color 57.1711, 10.9210, 14.5969.



This preview shows how white text looks on a background with the HunterLab color 57.1711, 10.9210,

Color Blindness Simulation

Color vision deficiency is a very complex topic, and I could not describe the different causes any better than Wikipedia does, so if you want to learn more, you should check out their [article about color blindness](#).

Dichromacy



Original Color

57.1711, 10.9210, 14.5969

Protanopia

57.3543, -3.9205, 12.7063

Deuteranopia

57.1879, 3.9717, 14.8442



Tritanopia

56.9736, 16.8831, 4.9339

Trichromacy



Original Color

57.1711, 10.9210, 14.5969

Protanomaly

57.2220, 1.4033, 13.4022

Deuteranomaly

57.0650, 6.3847, 14.7667

Tritanomaly

56.8684, 14.7324, 8.6191

Monochromacy



Original Color

57.1711, 10.9210, 14.5969

Achromatopsia

57.6586, -3.0765, 3.1327

Achromatomaly

57.3897, 1.2791, 7.7106

CSS Examples

Text

The CSS property to change the color of the text to HunterLab 57.1711, 10.9210, 14.5969 is called "color". The color property can be set on classes, ids or directly on the HTML element.

This example shows how text in the color `rgb(192, 144, 127)` looks like.

```
.text, #text, p{  
    color:rgb(192, 144, 127)  
}
```

If you want to add a text shadow in that color use the text-shadow property, you can generate a text shadow directly with our [CSS Text Shadow Generator](#).

Here you see how black text with a 4 pixel rgb(192, 144, 127) colored shadow looks like.

```
.shadow{ text-shadow: 4px 4px 2px rgb(192, 144, 127) }
```

Border

The CSS property to change the border of an element to HunterLab 57.1711, 10.9210, 14.5969 is called "border". The border property can be set on classes, ids or directly on the HTML element.

This example shows the color as border, it can be applied via the CSS property "border" or "border-color".

```
.border, #border, table{ border:4px solid rgb(192, 144, 127) }
```


If only the border color should be changed use the property `border-color`.

```
.border{ border-color:rgb(192, 144, 127) }
```

If you want to add a box shadow in that color use:

Here you see how a box with a 4 pixel `rgb(192, 144, 127)` colored shadow looks like.

```
.boxshadow{ -moz-box-shadow:4px 4px 4px 4px rgb(192, 144, 127); -webkit-box-shadow:4px 4px 4px 4px rgb(192, 144, 127); box-shadow:4px 4px 4px 4px rgb(192, 144, 127) }
```

Background

The CSS property to change the background color of an element to HunterLab 57.1711, 10.9210, 14.5969 is called "background". The background property can be set on classes, ids or directly on the HTML element.

```
.background, #background, body{  
background: rgb(192, 144, 127) }
```

If only the background color should be changed can be used:

```
.background{ background-color: rgb(192,  
144, 127) }
```

This example shows the color as background, it is applied via the CSS property "background".

To optimize and compress your CSS code, you can use our [online CSS compressor and optimizer](#) based on csstidy. If you want to create a linear or radial gradient as background or border, check our [CSS Gradient Generator](#).

Hey! You found this booklet interesting? Support Converting Colors with the new Membership Option!

The pro membership hides all ads, plus gives you double the colors in the color bucket, and more awesome pro features!

[Learn more, Memberships starting at \\$2.50/m!](#)

**Follow me
on Twitter!**

@ConvertingColor