

Converting Colors

HunterLab(57.1816, 4.1775,
24.0825)

Have a look what the booklet for
HunterLab(57.1816, 4.1775,
24.0825) contains.

HunterLab(57.1816, 4.1775, 24.0825)	3
<i>Conversions</i>	4
<i>Details</i>	6
<i>Harmonies</i>	12
<i>Previews</i>	24
<i>Color Blindness Simulation</i>	28
<i>CSS Examples</i>	31

Color

**HunterLab(57.1816, 4.1775,
24.0825)**

Conversions

Conversions Part 1

Format	Color
Hex	BC945F
RGB	188, 148, 95
RGB Percent	74%, 58%, 37%
CMY	0.2627, 0.4196, 0.6274
CMYK	0.00, 0.21, 0.49, 0.26
HSL	34°, 41%, 55%
HSV	34°, 49%, 74%
XYZ	33.3945, 32.6974, 15.3776
YIQ	153.9180, 40.8530, -8.0030

Conversions

Conversions Part 2

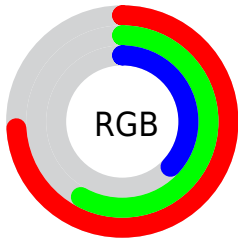
Format	Color
RYB	165, 188, 95
Decimal	12358751
CIELab	63.92, 8.35, 33.63
CIELCh	64, 34.654, 76.054
Yxy	32.6989, 0.4099, 0.4013
Android (android.graphics.Color)	4290548831 (0xFFBC945F)
YUV	153.9180, -29.0466, 29.8899
Hunter-Lab	57.1816, 4.1775, 24.0825

Details

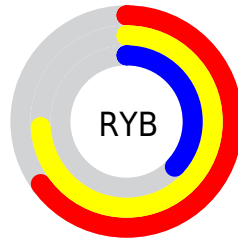
The HunterLab color $57.1816, 4.1775, 24.0825$ is a dark color, and the websafe version is hex $CC9966$. A complement of this color would be $48.3640, -1.7424, -28.5538$, and the grayscale version is $56.9159, -3.0369, 3.0923$.

A 20% lighter version of the original color is $79.9432, 3.7038, 29.1569$, and $36.9597, 4.4007, 18.5372$ is the 20% darker color. If you saturate the color by 10%, you get $54.7254, 6.7043, 26.3912$, and if you desaturate by 10%, it is $59.7569, 1.9710, 21.1199$.

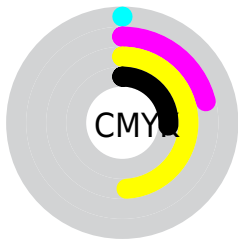
Distribution



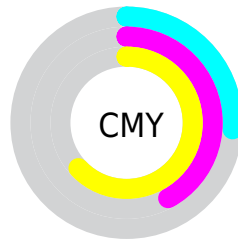
- Red (74%)
- Green (58%)
- Blue (37%)



- Red (65%)
- Yellow (74%)
- Blue (37%)



- Cyan (0%)
- Magenta (21%)
- Yellow (49%)
- Black (26%)



- Cyan (26%)
- Magenta (42%)
- Yellow (63%)

Brightness & Saturation Gradients

These gradients show how the HunterLab color 57.1816, 4.1775, 24.0825 changes by changing the brightness by 10 percent. The first figure shows a shift by +10% for each color and the second figure -10%.

Similar to the brightness gradients but the following saturation gradients show a change of the HunterLab color 57.1816, 4.1775, 24.0825 by changing the saturation by 10% instead.

■ 57.1816, 4.1775,
24.0825

■ 57.1816, 4.1775,
24.0825

177.2825, 0.9388,
44.7143

■ 46.7931, 4.2859,
21.4330

■ 79.9407, 3.7749,
29.0601

■ 37.1220, 4.3273,
18.6336

■ 92.2373, 3.4963,
31.4296

■ 28.2278, 4.2888,
15.6392

■ 105.1068, 3.1709,
33.7398

■ 20.1855, 4.1552,
12.5685

■ 118.5247, 2.8018,
36.0016

■ 13.0971, 3.9038,
9.1680

132.4695, 2.3920,
38.2236

■ 6.5846, 5.1754,
4.6092

146.9219, 1.9435,

0.0000, NaN, NaN

40.4128

0.0000, NaN, NaN

161.8648, 1.4585,
42.5748

0.0000, NaN, NaN

■ 57.1816, 4.1775,
24.0825

■ 57.1816, 4.1775,
24.0825

■ 54.7254, 6.7043,
26.3912

■ 59.7569, 1.9710,
21.1199

■ 52.3913, 9.5607,
28.0103

■ 62.4399, 0.0828,
17.5426

■ 50.1874, 12.7364,
28.9213

■ 65.2250, -1.5028,
13.3953

■ 48.1193, 16.2091,
29.1305

■ 68.1054, -2.8020,
8.7224

■ 46.1845, 19.9078,
28.7703

■ 71.0747, -3.8322,
3.5667

■ 46.0844, 20.1060,
28.7490

■ 74.1273, -4.6112,
-2.0316

■ 77.2576, -5.1566,
-8.0352

■ 80.4606, -5.4854,
-14.4101

■ 83.3687, -7.6129,
-16.0448

Harmonies

Analogous

The Analogous color harmony consists of three colors that are next to each other on the color wheel.



57.1830, 18.7171, 19.7543



57.1816, 4.1775, 24.0825



57.1830, -10.9279, 23.9312

Triad

The Triadic color harmony groups three colors that are evenly spaced from another and form a triangle on the color wheel.



57.1830, 4.1751, 24.0832



57.1830, -28.5594, -5.1378



57.1830, 19.5906, -19.7869

Complementary

The Complementary color scheme is a pair of colors which are on the opposite of each other on the color wheel.



57.1816, 4.1775, 24.0825



48.3640, -1.7424, -28.5538

Split Complementary

Split-complementary colors differ from the complementary color scheme. The scheme consists of three colors, the original color and two neighbors of the complement color.



57.1830, 5.2700, -30.6447



57.1816, 4.1775, 24.0825



57.1830, -21.9882, -20.7917

Square

The Square scheme is like the rectangle color scheme, but the four colors are evenly spaced on the color wheel.



57.1830, 4.1751, 24.0832



57.1830, -28.7866, 9.4269



57.1830, -9.9413, -31.0542



57.1830, 28.2271, -4.0155

Rectangle

The Rectangle color scheme consists of four colors that form a rectangle on the color wheel.



57.1816, 4.1775, 24.0825



57.1830, -19.2863, 21.3625



57.1830, -9.9413, -31.0542



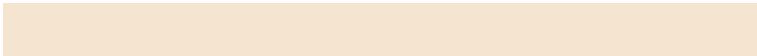
57.1830, 15.2185, -24.2945

Sweetspot

The Sweet Spot groups the original color and five complimentary colors.



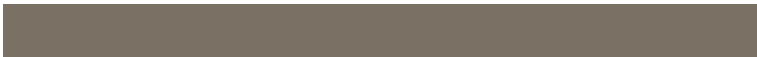
57.1830, 4.1751, 24.0832



89.4302, -2.8072, 15.4604



45.4244, 35.3527, -1.4543



41.0945, -1.1241, 7.7726



97.7295, -5.2146, 5.3098



44.2712, -2.3622, 2.4053

Same Dimension

The Same Dimension uses a secret algorithm to generate beautiful new colors.



57.1830, 4.1751, 24.0832



73.5127, 9.2069, 35.6599



68.3471, -16.9873, 32.4257



32.2715, -1.3332, 4.1050



38.2226, 16.1686, 23.8357



8.3655, 1.5864, 5.1826

Inverse Universe

The Inverse Universe completely reimagines the original color for something new.



48.3640, -1.7424, -28.5538



59.4321, 0.3712, -49.3918



38.2020, 19.8635, -49.9523



31.4356, -1.9498, -0.7923



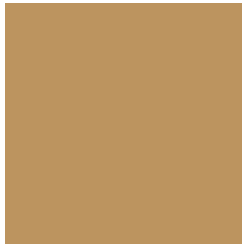
25.7010, 12.2996, -58.6754



6.2353, 0.1974, -8.2197

Previews

White Background



This preview shows how the HunterLab color 57.1816, 4.1775, 24.0825 looks on a white background.

Color Contrast Check

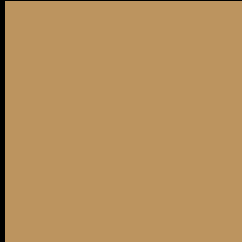
Large Text (above 18pt) WCAG AA × Fail

Any Text WCAG AA × Fail

Large Text (above 18pt) WCAG AAA × Fail

Any Text WCAG AAA × Fail

Black Background



This preview shows how the HunterLab color 57.1816, 4.1775, 24.0825 looks on a black background.

Color Contrast Check

Large Text (above 18pt) WCAG AA ✓ Pass

Any Text WCAG AA ✓ Pass

Large Text (above 18pt) WCAG AAA ✓ Pass

Any Text WCAG AAA ✓ Pass

If you want to check with other color combinations, try the [Color Contrast Checker](#).

HunterLab 57.1816, 4.1775, 24.0825 Background



This preview shows how black text looks on a background with the HunterLab color 57.1816, 4.1775, 24.0825.



This preview shows how white text looks on a background with the HunterLab color 57.1816, 4.1775,

Color Blindness Simulation

Color vision deficiency is a very complex topic, and I could not describe the different causes any better than Wikipedia does, so if you want to learn more, you should check out their [article about color blindness](#).

Dichromacy



Original Color

57.1816, 4.1775, 24.0825

Protanopia

57.2360, -5.7043, 23.1987

Deuteranopia

57.1816, 4.1775, 24.0825



Tritanopia

57.1439, 16.1519, 4.6731

Trichromacy



Original Color

57.1816, 4.1775, 24.0825

Protanomaly

57.0523, -1.9430, 23.3685

Deuteranomaly

57.1816, 4.1775, 24.0825

Tritanomaly

57.1503, 11.0401, 13.1324

Monochromacy



Original Color

57.1816, 4.1775, 24.0825

Achromatopsia

56.8457, -3.0331, 3.0885

Achromatomaly

56.7952, -1.3724, 11.8078

CSS Examples

Text

The CSS property to change the color of the text to HunterLab 57.1816, 4.1775, 24.0825 is called "color". The color property can be set on classes, ids or directly on the HTML element.

This example shows how text in the color `rgb(188, 148, 95)` looks like.

```
.text, #text, p{  
    color:rgb(188, 148, 95)  
}
```

If you want to add a text shadow in that color use the text-shadow property, you can generate a text shadow directly with our [CSS Text Shadow Generator](#).

Here you see how black text with a 4 pixel rgb(188, 148, 95) colored shadow looks like.

```
.shadow{ text-shadow: 4px 4px 2px rgb(188, 148, 95) }
```

Border

The CSS property to change the border of an element to HunterLab 57.1816, 4.1775, 24.0825 is called "border". The border property can be set on classes, ids or directly on the HTML element.

This example shows the color as border, it can be applied via the CSS property "border" or "border-color".

```
.border, #border, table{ border:4px solid rgb(188, 148, 95) }
```


If only the border color should be changed use the property border-color.

```
.border{ border-color:rgb(188, 148, 95) }
```

If you want to add a box shadow in that color use:

Here you see how a box with a 4 pixel rgb(188, 148, 95) colored shadow looks like.

```
.boxshadow{ -moz-box-shadow:4px 4px 4px  
4px rgb(188, 148, 95); -webkit-box-  
shadow:4px 4px 4px 4px rgb(188, 148, 95);  
box-shadow:4px 4px 4px 4px rgb(188, 148,  
95) }
```

Background

The CSS property to change the background color of an element to HunterLab 57.1816, 4.1775, 24.0825 is called "background". The background property can be set on classes, ids or directly on the HTML element.

```
.background, #background, body{  
background: rgb(188, 148, 95) }
```

If only the background color should be changed can be used:

```
.background{ background-color: rgb(188,  
148, 95) }
```

This example shows the color as background, it is applied via the CSS property "background".

To optimize and compress your CSS code, you can use our [online CSS compressor and optimizer](#) based on csstidy. If you want to create a linear or radial gradient as background or border, check our [CSS Gradient Generator](#).

Hey! You found this booklet interesting? Support Converting Colors with the new Membership Option!

The pro membership hides all ads, plus gives you double the colors in the color bucket, and more awesome pro features!

[Learn more, Memberships starting at \\$2.50/m!](#)

**Follow me
on Twitter!**

@ConvertingColor