

# Converting Colors

HunterLab(57.2019, 12.5713,  
10.9368)

Have a look what the booklet for  
HunterLab(57.2019, 12.5713,  
10.9368) contains.

<b>HunterLab(57.1468, 12.6780, 10.8810)</b> .....	3
<b><i>Conversions</i></b> .....	4
<b><i>Details</i></b> .....	6
<b><i>Harmonies</i></b> .....	12
<b><i>Previews</i></b> .....	24
<b><i>Color Blindness Simulation</i></b> .....	28
<b><i>CSS Examples</i></b> .....	31

# Color

**HunterLab(57.1468, 12.6780,  
10.8810)**

# Conversions

## Conversions Part 1

<b>Format</b>	<b>Color</b>
Hex	C08F89
RGB	192, 143, 137
RGB Percent	75%, 56%, 54%
CMY	0.2471, 0.4392, 0.4627
CMYK	0.00, 0.26, 0.29, 0.25
HSL	7°, 30%, 65%
HSV	7°, 29%, 75%
XYZ	36.0761, 32.6576, 28.0691
YIQ	156.9670, 31.1300, 8.5220

# Conversions

## Conversions Part 2

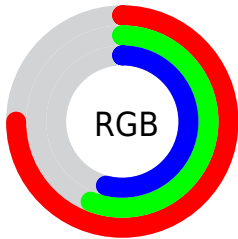
Format	Color
R <sub>Y</sub> B	192, 144, 137
Decimal	12619657
CIE Lab	63.88, 17.69, 10.44
CIE LCh	64, 20.545, 30.548
Yxy	32.6591, 0.3727, 0.3374
Android (android.graphics.Color)	4290809737 (0xFFC08F89)
YUV	156.9670, -9.8437, 30.7239
Hunter-Lab	57.1468, 12.6780, 10.8810

# Details

The HunterLab color **57.1468, 12.6780, 10.8810** is a light color, and the websafe version is hex **CC9999**. A complement of this color would be **66.5136, -16.0584, -3.7491**, and the grayscale version is **58.0834, -3.0992, 3.1558**.

A 20% lighter version of the original color is **79.8686, 12.9363, 13.2777**, and **36.9605, 11.9339, 8.5195** is the 20% darker color. If you saturate the color by 10%, you get **52.3509, 19.0121, 13.2499**, and if you desaturate by 10%, it is **62.2841, 6.6300, 8.4696**.

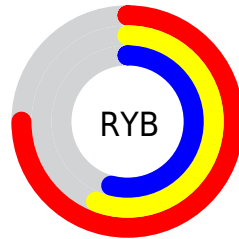
# Distribution



Red (75%)

Green (56%)

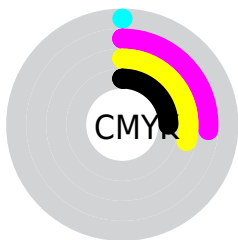
Blue (54%)



Red (75%)

Yellow (56%)

Blue (54%)

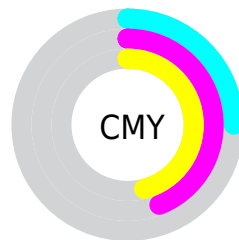


Cyan (0%)

Magenta (26%)

Yellow (29%)

Black (25%)



Cyan (25%)

Magenta (44%)

Yellow (46%)

# Brightness & Saturation Gradients

These gradients show how the HunterLab color 57.1468, 12.6780, 10.8810 changes by changing the brightness by 10 percent. The first figure shows a shift by +10% for each color and the second figure -10%.

Similar to the brightness gradients but the following saturation gradients show a change of the HunterLab color 57.1468, 12.6780, 10.8810 by changing the saturation by 10% instead.



■ 57.1468, 12.6780,  
10.8810

■ 57.1468, 12.6780,  
10.8810

177.2317, 12.8618,  
21.4532

■ 46.7605, 12.3198,  
9.7333

■ 79.9018, 13.1422,  
13.1750

■ 37.0918, 11.8675,  
8.5743

■ 92.1965, 13.2689,  
14.3277

■ 28.2003, 11.3038,  
7.3935

■ 105.0641, 13.3331,  
15.4881

■ 20.1609, 10.6088,  
6.1719

118.4803, 13.3395,  
16.6579

■ 13.0758, 9.7568,  
4.8749

132.4234, 13.2922,  
17.8385

■ 6.5572, 11.4079,  
4.5901

146.8742, 13.1949,

0.0000, NaN, NaN

19.0308

0.0000, NaN, NaN

161.8155, 13.0505,  
20.2355

0.0000, NaN, NaN

■ 57.1468, 12.6780,  
10.8810

■ 57.1468, 12.6780,  
10.8810

■ 52.3509, 19.0121,  
13.2499

■ 62.2841, 6.6300,  
8.4696

■ 47.9517, 25.5942,  
15.5235

■ 67.7097, 0.8775,  
6.0424

■ 44.0205, 32.3047,  
17.6243

■ 73.3850, -4.6010,  
3.6164

■ 40.6342, 38.9201,  
19.4416

■ 79.2778, -9.8341,  
1.1992

■ 37.8695, 45.0897,  
20.8398

■ 85.3617, -14.8526,  
-1.2065

■ 35.7869, 50.3624,  
21.6924

■ 91.6156, -19.6865,  
-3.6005

■ 34.4035, 54.2736,  
22.0207

■ 94.8401, -23.7797,  
-1.1210

■ 34.2656, 54.6696,  
22.0714

# Harmonies

## Analogous

The Analogous color harmony consists of three colors that are next to each other on the color wheel.



57.1481, 15.3587, 3.2683



57.1468, 12.6780, 10.8810



57.1481, 5.7343, 15.7006

# Triad

The Triadic color harmony groups three colors that are evenly spaced from another and form a triangle on the color wheel.



57.1481, 12.6757, 10.8819



57.1481, -17.3935, 10.6478



57.1481, -2.8863, -15.9836

# Complementary

The Complementary color scheme is a pair of colors which are on the opposite of each other on the color wheel.



57.1468, 12.6780, 10.8810



66.5136, -16.0584, -3.7491

# Split Complementary

Split-complementary colors differ from the complementary color scheme. The scheme consists of three colors, the original color and two neighbors of the complement color.



57.1481, -11.3382, -13.2139



57.1468, 12.6780, 10.8810



57.1481, -19.3924, 2.9527

# Square

The Square scheme is like the rectangle color scheme, but the four colors are evenly spaced on the color wheel.



57.1481, 12.6757, 10.8819



57.1481, -11.6087, 15.5809



57.1481, -17.2443, -5.9329



57.1481, 6.0390, -13.0126



# Rectangle

The Rectangle color scheme consists of four colors that form a rectangle on the color wheel.



57.1468, 12.6780, 10.8810



57.1481, -0.1741, 17.1178



57.1481, -17.2443, -5.9329



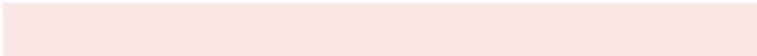
57.1481, -5.8748, -15.6891

# Sweetspot

The Sweet Spot groups the original color and five complimentary colors.



57.1481, 12.6757, 10.8819



90.7702, 1.5585, 8.2967



57.1530, 23.6619, -12.8495



41.5369, 1.2386, 4.0651



98.8636, -5.2751, 5.3714



45.2661, -2.4153, 2.4594



# Same Dimension

The Same Dimension uses a secret algorithm to generate beautiful new colors.



57.1481, 12.6757, 10.8819



73.0566, 22.0494, 16.5392



64.6238, -0.8698, 18.0917



32.0171, 0.6122, 2.9585



28.2108, 44.5062, 18.1625



6.3590, 7.7151, 4.0535



# Inverse Universe

The Inverse Universe completely reimagines the original color for something new.



66.5136, -16.0584, -3.7491



88.0778, -24.2555, -6.9780



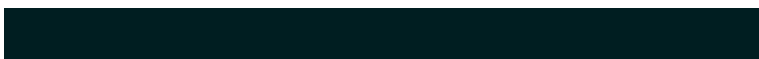
58.2416, -3.1452, -14.9339



33.5180, -3.9550, 0.6226



47.1591, -21.0528, -13.4978



10.0779, -4.7222, -2.4026



# Previews

## White Background



This preview shows how the HunterLab color 57.1468, 12.6780, 10.8810 looks on a white background.

## Color Contrast Check

Large Text (above 18pt) WCAG AA × Fail

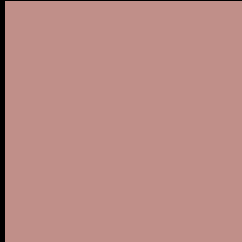
Any Text WCAG AA × Fail

Large Text (above 18pt) WCAG AAA × Fail

Any Text WCAG AAA × Fail



# Black Background



This preview shows how the HunterLab color 57.1468, 12.6780, 10.8810 looks on a black background.

## Color Contrast Check

Large Text (above 18pt) WCAG AA ✓ Pass

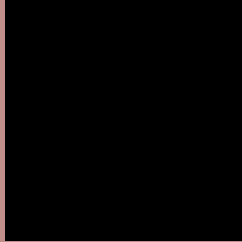
Any Text WCAG AA ✓ Pass

Large Text (above 18pt) WCAG AAA ✓ Pass

Any Text WCAG AAA ✓ Pass

If you want to check with other color combinations, try the [Color Contrast Checker](#).

# HunterLab 57.1468, 12.6780, 10.8810 Background



This preview shows how black text looks on a background with the HunterLab color 57.1468, 12.6780, 10.8810.



This preview shows how white text looks on a background with the HunterLab color 57.1468, 12.6780,



# Color Blindness Simulation

Color vision deficiency is a very complex topic, and I could not describe the different causes any better than Wikipedia does, so if you want to learn more, you should check out their [article about color blindness](#).

## Dichromacy



### Original Color

57.1468, 12.6780, 10.8810

### Protanopia

57.4482, -3.0407, 8.5263

### Deuteranopia

57.1136, 4.1969, 11.0864



## Tritanopia

57.2591, 16.5138, 4.8125

# Trichromacy



## Original Color

57.1468, 12.6780, 10.8810

## Protanomaly

57.2948, 2.1942, 9.2664

## Deuteranomaly

57.0877, 6.9351, 11.1075

## Tritanomaly

57.2626, 14.9149, 6.9650

# Monochromacy



## Original Color

57.1468, 12.6780, 10.8810

## Achromatopsia

58.0658, -3.0982, 3.1548

## Achromatomaly

57.6234, 2.3461, 5.8596

# CSS Examples

## Text

The CSS property to change the color of the text to HunterLab 57.1468, 12.6780, 10.8810 is called "color". The color property can be set on classes, ids or directly on the HTML element.

This example shows how text in the color `rgb(192, 143, 137)` looks like.

```
.text, #text, p{  
  color:rgb(192, 143, 137)  
}
```

If you want to add a text shadow in that color use the text-shadow property, you can generate a text shadow directly with our [CSS Text Shadow Generator](#).

Here you see how black text with a 4 pixel rgb(192, 143, 137) colored shadow looks like.

```
.shadow{ text-shadow: 4px 4px 2px rgb(192, 143, 137) }
```

## Border

The CSS property to change the border of an element to HunterLab 57.1468, 12.6780, 10.8810 is called "border". The border property can be set on classes, ids or directly on the HTML element.

This example shows the color as border, it can be applied via the CSS property "border" or "border-color".

```
.border, #border, table{ border:4px solid rgb(192, 143, 137) }
```



If only the border color should be changed use the property `border-color`.

```
.border{ border-color:rgb(192, 143, 137) }
```

If you want to add a box shadow in that color use:

Here you see how a box with a 4 pixel `rgb(192, 143, 137)` colored shadow looks like.

```
.boxshadow{ -moz-box-shadow:4px 4px 4px 4px rgb(192, 143, 137); -webkit-box-shadow:4px 4px 4px 4px rgb(192, 143, 137); box-shadow:4px 4px 4px 4px rgb(192, 143, 137) }
```

# Background

The CSS property to change the background color of an element to HunterLab 57.1468, 12.6780, 10.8810 is called "background". The background property can be set on classes, ids or directly on the HTML element.

```
.background, #background, body{  
background: rgb(192, 143, 137) }
```

If only the background color should be changed can be used:

```
.background{ background-color: rgb(192,  
143, 137) }
```

This example shows the color as background, it is applied via the CSS property "background".

To optimize and compress your CSS code, you can use our [online CSS compressor and optimizer](#) based on csstidy. If you want to create a linear or radial gradient as background or border, check our [CSS Gradient Generator](#).

Hey! You found this booklet interesting? Support Converting Colors with the new Membership Option!

The pro membership hides all ads, plus gives you double the colors in the color bucket, and more awesome pro features!

**[Learn more, Memberships starting at \\$2.50/m!](#)**

**Follow me  
on Twitter!**

@ConvertingColor