

Converting Colors

HunterLab(57.2116, 9.3099,
6.8099)

Have a look what the booklet for
HunterLab(57.2116, 9.3099, 6.8099)
contains.

HunterLab(57.2116, 9.3099, 6.8099)	3
<i>Conversions</i>	4
<i>Details</i>	6
<i>Harmonies</i>	12
<i>Previews</i>	24
<i>Color Blindness Simulation</i>	28
<i>CSS Examples</i>	31

Color

**HunterLab(57.2116, 9.3099,
6.8099)**

Conversions

Conversions Part 1

Format	Color
Hex	B79293
RGB	183, 146, 147
RGB Percent	72%, 57%, 58%
CMY	0.2824, 0.4274, 0.4235
CMYK	0.00, 0.20, 0.20, 0.28
HSL	358°, 20%, 65%
HSV	358°, 20%, 72%
XYZ	35.0738, 32.7317, 32.0731
YIQ	157.1770, 21.7310, 8.1550

Conversions

Conversions Part 2

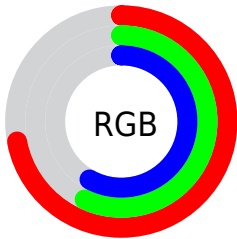
Format	Color
RYB	183, 146, 147
Decimal	12030611
CIELab	63.94, 14.05, 4.76
CIELCh	64, 14.835, 18.720
Yxy	32.7332, 0.3512, 0.3277
Android (android.graphics.Color)	4290220691 (0xFFB79293)
YUV	157.1770, -5.0173, 22.6468
Hunter-Lab	57.2116, 9.3099, 6.8099

Details

The HunterLab color **57.2116, 9.3099, 6.8099** is a light color, and the websafe version is hex **CC9999**. A complement of this color would be **65.8454, -14.2964, 0.4714**, and the grayscale version is **58.1526, -3.1029, 3.1595**.

A 20% lighter version of the original color is **79.9227, 9.3125, 8.4180**, and **37.0332, 8.9528, 4.8704** is the 20% darker color. If you saturate the color by 10%, you get **51.9797, 16.1246, 8.5449**, and if you desaturate by 10%, it is **62.7990, 2.7540, 5.2227**.

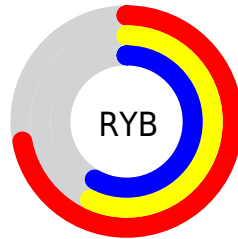
Distribution



Red (72%)

Green (57%)

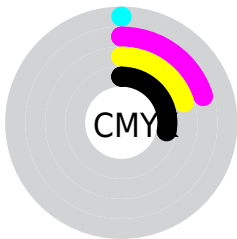
Blue (58%)



Red (72%)

Yellow (57%)

Blue (58%)

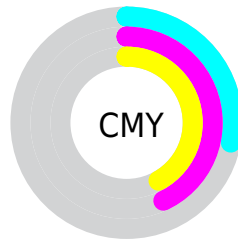


Cyan (0%)

Magenta (20%)

Yellow (20%)

Black (28%)



Cyan (28%)


Magenta (43%)


Yellow (42%)

Brightness & Saturation Gradients


These gradients show how the HunterLab color 57.2116, 9.3099, 6.8099 changes by changing the brightness by 10 percent. The first figure shows a shift by +10% for each color and the second figure -10%.


Similar to the brightness gradients but the following saturation gradients show a change of the HunterLab color 57.2116, 9.3099, 6.8099 by changing the saturation by 10% instead.


 57.2116, 9.3099,
6.8099

 57.2116, 9.3099,
6.8099


177.3262, 8.1740,
15.1424

 46.8211, 9.1305,
5.9890

 79.9742, 9.4416,
8.5154

 37.1479, 8.8663,
5.1859


 92.2724, 9.4122,
9.3992

 28.2515, 8.5014,
4.3987


105.1435, 9.3261,
10.3041

 20.2067, 8.0168,
3.6225

118.5629, 9.1876,
11.2302

 13.1155, 7.3857,
2.8469

132.5091, 9.0002,
12.1773

 6.6080, 8.9119,
3.3462

146.9629, 8.7671,

0.0000, NaN, NaN

13.1452

0.0000, NaN, NaN

161.9071, 8.4909,
14.1337

0.0000, NaN, NaN

■ 57.2116, 9.3099,
6.8099

■ 57.2116, 9.3099,
6.8099

■ 51.9797, 16.1246,
8.5449

■ 62.7990, 2.7540,
5.2227

■ 47.1671, 23.1603,
10.4247

■ 68.6836, -3.5384,
3.7689

■ 42.8579, 30.2886,
12.4256

■ 74.8239, -9.5915,
2.4336

■ 39.1477, 37.2523,
14.4819

■ 81.1858, -15.4355,
1.2004

■ 36.1359, 43.6284,
16.4702

■ 87.7421, -21.1013,
0.0541

■ 33.9054, 48.8610,
18.2125

■ 94.1982, -26.2265,
-1.3500

■ 32.4902, 52.4255,
19.5203

■ 94.2377, -26.0018,
-1.9093

■ 31.7461, 54.4002,
20.2498

Harmonies

Analogous

The Analogous color harmony consists of three colors that are next to each other on the color wheel.



57.2129, 9.7646, 0.7321



57.2116, 9.3099, 6.8099



57.2129, 5.4520, 11.3708

Triad

The Triadic color harmony groups three colors that are evenly spaced from another and form a triangle on the color wheel.



57.2129, 9.3079, 6.8109



57.2129, -12.1751, 10.4365



57.2129, -5.4874, -9.8585

Complementary

The Complementary color scheme is a pair of colors which are on the opposite of each other on the color wheel.



57.2116, 9.3099, 6.8099



65.8454, -14.2964, 0.4714

Split Complementary

Split-complementary colors differ from the complementary color scheme. The scheme consists of three colors, the original color and two neighbors of the complement color.



57.2129, -11.0938, -6.5919



57.2116, 9.3099, 6.8099



57.2129, -14.8381, 5.3982

Square

The Square scheme is like the rectangle color scheme, but the four colors are evenly spaced on the color wheel.



57.2129, 9.3079, 6.8109



57.2129, -7.0238, 13.2966



57.2129, -14.4513, -0.8468



57.2129, 1.0234, -9.3706

Rectangle

The Rectangle color scheme consists of four colors that form a rectangle on the color wheel.



57.2116, 9.3099, 6.8099



57.2129, 1.5655, 13.1493



57.2129, -14.4513, -0.8468



57.2129, -7.5349, -9.1496

Sweetspot

The Sweet Spot groups the original color and five complimentary colors.



57.2129, 9.3079, 6.8109



87.2397, 0.1775, 6.1677



58.2193, 14.8183, -9.4900



40.7613, 0.3410, 2.9585



96.5975, -5.1542, 5.2483



43.2801, -2.3093, 2.3515

Same Dimension

The Same Dimension uses a secret algorithm to generate beautiful new colors.



57.2129, 9.3079, 6.8109



73.5766, 16.2288, 10.0607



61.9943, 0.5267, 12.2002



30.0267, 1.0398, 2.4144



26.5185, 45.4483, 16.8672



4.9924, 8.5828, 2.9689

Inverse Universe

The Inverse Universe completely reimagines the original color for something new.



57.2129, 9.3079, 6.8109



73.5766, 16.2288, 10.0607



60.5861, -5.8826, -6.6117



30.0267, 1.0398, 2.4144



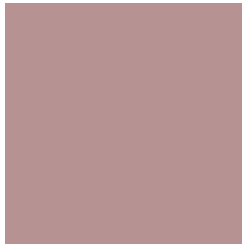
26.5185, 45.4483, 16.8672



4.9924, 8.5828, 2.9689

Previews

White Background



This preview shows how the HunterLab color 57.2116, 9.3099, 6.8099 looks on a white background.

Color Contrast Check

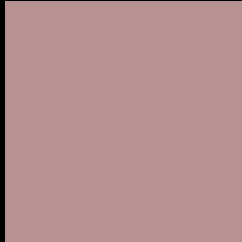
Large Text (above 18pt) WCAG AA × Fail

Any Text WCAG AA × Fail

Large Text (above 18pt) WCAG AAA × Fail

Any Text WCAG AAA × Fail

Black Background



This preview shows how the HunterLab color 57.2116, 9.3099, 6.8099 looks on a black background.

Color Contrast Check

Large Text (above 18pt) WCAG AA ✓ Pass

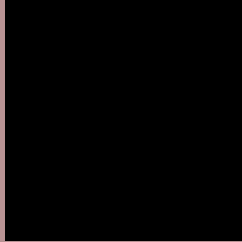
Any Text WCAG AA ✓ Pass

Large Text (above 18pt) WCAG AAA ✓ Pass

Any Text WCAG AAA ✓ Pass

If you want to check with other color combinations, try the [Color Contrast Checker](#).

HunterLab 57.2116, 9.3099, 6.8099 Background



This preview shows how black text looks on a background with the HunterLab color 57.2116, 9.3099, 6.8099.



This preview shows how white text looks on a background with the HunterLab color 57.2116, 9.3099,

6.8099.

Color Blindness Simulation

Color vision deficiency is a very complex topic, and I could not describe the different causes any better than Wikipedia does, so if you want to learn more, you should check out their [article about color blindness](#).

Dichromacy



Original Color

57.2116, 9.3099, 6.8099

Protanopia

57.2269, -1.8273, 4.4542

Deuteranopia

57.2471, 3.7372, 7.1762



Tritanopia

57.3075, 11.5117, 2.9735

Trichromacy



Original Color

57.2116, 9.3099, 6.8099

Protanomaly

57.1490, 2.1877, 5.3181

Deuteranomaly

57.3736, 5.5856, 7.3487

Tritanomaly

57.2198, 11.0534, 4.2247

Monochromacy



Original Color

57.2116, 9.3099, 6.8099

Achromatopsia

58.0658, -3.0982, 3.1548

Achromatomaly

57.6102, 1.0172, 4.5012

CSS Examples

Text

The CSS property to change the color of the text to HunterLab 57.2116, 9.3099, 6.8099 is called "color". The color property can be set on classes, ids or directly on the HTML element.

This example shows how text in the color `rgb(183, 146, 147)` looks like.

```
.text, #text, p{  
    color:rgb(183, 146, 147)  
}
```

If you want to add a text shadow in that color use the text-shadow property, you can generate a text shadow directly with our [CSS Text Shadow Generator](#).

Here you see how black text with a 4 pixel rgb(183, 146, 147) colored shadow looks like.

```
.shadow{ text-shadow: 4px 4px 2px rgb(183, 146, 147) }
```

Border

The CSS property to change the border of an element to HunterLab 57.2116, 9.3099, 6.8099 is called "border". The border property can be set on classes, ids or directly on the HTML element.

This example shows the color as border, it can be applied via the CSS property "border" or "border-color".

```
.border, #border, table{ border:4px solid rgb(183, 146, 147) }
```


If only the border color should be changed use the property `border-color`.

```
.border{ border-color:rgb(183, 146, 147) }
```

If you want to add a box shadow in that color use:

Here you see how a box with a 4 pixel `rgb(183, 146, 147)` colored shadow looks like.

```
.boxshadow{ -moz-box-shadow:4px 4px 4px  
4px rgb(183, 146, 147); -webkit-box-  
shadow:4px 4px 4px 4px rgb(183, 146, 147);  
box-shadow:4px 4px 4px 4px rgb(183, 146,  
147) }
```

Background

The CSS property to change the background color of an element to HunterLab 57.2116, 9.3099, 6.8099 is called "background". The background property can be set on classes, ids or directly on the HTML element.

```
.background, #background, body{  
background: rgb(183, 146, 147) }
```

If only the background color should be changed can be used:

```
.background{ background-color: rgb(183,  
146, 147) }
```

This example shows the color as background, it is applied via the CSS property "background".

To optimize and compress your CSS code, you can use our [online CSS compressor and optimizer](#) based on csstidy. If you want to create a linear or radial gradient as background or border, check our [CSS Gradient Generator](#).

Hey! You found this booklet interesting? Support Converting Colors with the new Membership Option!

The pro membership hides all ads, plus gives you double the colors in the color bucket, and more awesome pro features!

[Learn more, Memberships starting at \\$2.50/m!](#)

**Follow me
on Twitter!**

@ConvertingColor