

Converting Colors

HunterLab(57.2717, 11.6744,
11.3815)

Have a look what the booklet for
HunterLab(57.2717, 11.6744,
11.3815) contains.

HunterLab(57.2717, 11.6744, 11.3815)	3
<i>Conversions</i>	4
<i>Details</i>	6
<i>Harmonies</i>	12
<i>Previews</i>	24
<i>Color Blindness Simulation</i>	28
<i>CSS Examples</i>	31

Color

**HunterLab(57.2717, 11.6744,
11.3815)**

Conversions

Conversions Part 1

Format	Color
Hex	BF9088
RGB	191, 144, 136
RGB Percent	75%, 56%, 53%
CMY	0.2510, 0.4353, 0.4667
CMYK	0.00, 0.25, 0.29, 0.25
HSL	9°, 30%, 64%
HSV	9°, 29%, 75%
XYZ	35.9031, 32.8005, 27.7314
YIQ	157.1410, 30.5800, 7.4760

Conversions

Conversions Part 2

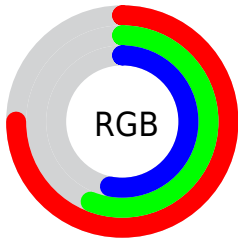
Format	Color
RYB	191, 145, 136
Decimal	12554376
CIELab	64.00, 16.61, 11.16
CIElCh	64, 20.011, 33.881
Yxy	32.8020, 0.3723, 0.3401
Android (android.graphics.Color)	4290744456 (0xFFBF9088)
YUV	157.1410, -10.4225, 29.6943
Hunter-Lab	57.2717, 11.6744, 11.3815

Details

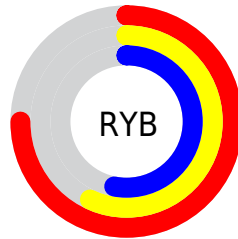
The HunterLab color **57.2717, 11.6744, 11.3815** is a light color, and the websafe version is hex **CC9999**. A complement of this color would be **65.4687, -15.0796, -4.5610**, and the grayscale version is **58.1567, -3.1031, 3.1598**.

A 20% lighter version of the original color is **80.0117, 11.8848, 13.8353**, and **37.0605, 10.9906, 8.9440** is the 20% darker color. If you saturate the color by 10%, you get **52.6446, 17.6244, 13.8282**, and if you desaturate by 10%, it is **62.2101, 6.0141, 8.8416**.

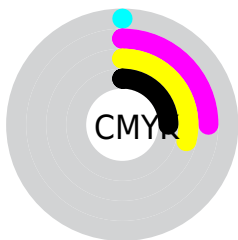
Distribution



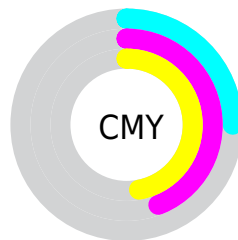
- Red (75%)
- Green (56%)
- Blue (53%)



- Red (75%)
- Yellow (57%)
- Blue (53%)



- Cyan (0%)
- Magenta (25%)
- Yellow (29%)
- Black (25%)




- Cyan (25%)
- Magenta (44%)
- Yellow (47%)

Brightness & Saturation Gradients


These gradients show how the HunterLab color 57.2717, 11.6744, 11.3815 changes by changing the brightness by 10 percent. The first figure shows a shift by +10% for each color and the second figure -10%.


Similar to the brightness gradients but the following saturation gradients show a change of the HunterLab color 57.2717, 11.6744, 11.3815 by changing the saturation by 10% instead.


 57.2717, 11.6744,
11.3815


 57.2717, 11.6744,
11.3815


177.4138, 11.4638,
22.2429


 46.8773, 11.3695,
10.1914


 80.0414, 12.0392,
13.7517

 37.2000, 10.9733,
8.9862


 92.3429, 12.1193,
14.9391

 28.2990, 10.4689,
7.7543


 105.2171, 12.1386,
16.1325

 20.2492, 9.8365,
6.4749

118.6395, 12.1016,
17.3338

 13.1523, 9.0497,
5.1148

132.5886, 12.0125,
18.5445

 6.6547, 10.5224,
4.6583

147.0453, 11.8747,

0.0000, NaN, NaN

19.7657

0.0000, NaN, NaN

161.9922, 11.6909,
20.9983

0.0000, NaN, NaN

■ 57.2717, 11.6744,
11.3815

■ 57.2717, 11.6744,
11.3815

■ 52.6446, 17.6244,
13.8282

■ 62.2101, 6.0141,
8.8416

■ 48.3766, 23.8409,
16.1250

■ 67.4128, 0.6463,
6.2409

■ 44.5296, 30.2345,
18.1949

■ 72.8459, -4.4522,
3.6023

■ 41.1710, 36.6309,
19.9336

■ 78.4806, -9.3095,
0.9392

■ 38.3695, 42.7463,
21.2199

■ 84.2934, -13.9553,
-1.7408

■ 36.1835, 48.1948,
21.9451

■ 90.2650, -18.4179,
-4.4334

■ 34.6381, 52.5330,
22.1504

■ 94.7715, -24.0320,
-1.2105

■ 34.4924, 52.9532,
22.1811

Harmonies

Analogous

The Analogous color harmony consists of three colors that are next to each other on the color wheel.



57.2730, 14.8144, 4.1962



57.2717, 11.6744, 11.3815



57.2730, 4.5799, 15.7658

Triad

The Triadic color harmony groups three colors that are evenly spaced from another and form a triangle on the color wheel.



57.2730, 11.6722, 11.3824



57.2730, -17.4702, 9.7589



57.2730, -1.9094, -15.3735

Complementary

The Complementary color scheme is a pair of colors which are on the opposite of each other on the color wheel.



57.2717, 11.6744, 11.3815



65.4687, -15.0796, -4.5610

Split Complementary

Split-complementary colors differ from the complementary color scheme. The scheme consists of three colors, the original color and two neighbors of the complement color.



57.2730, -10.3174, -13.2950



57.2717, 11.6744, 11.3815



57.2730, -18.9781, 2.0175

Square

The Square scheme is like the rectangle color scheme, but the four colors are evenly spaced on the color wheel.



57.2730, 11.6722, 11.3824



57.2730, -12.1876, 14.9325



57.2730, -16.4370, -6.5984



57.2730, 6.6797, -11.9155

Rectangle

The Rectangle color scheme consists of four colors that form a rectangle on the color wheel.



57.2717, 11.6744, 11.3815



57.2730, -1.2448, 16.9207



57.2730, -16.4370, -6.5984



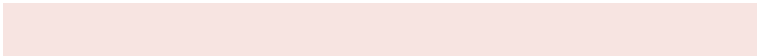
57.2730, -4.8509, -15.3017

Sweetspot

The Sweet Spot groups the original color and five complimentary colors.



57.2730, 11.6722, 11.3824



89.9702, 1.1081, 8.4739



56.6849, 23.3193, -11.9030



41.6709, 1.0052, 4.2129



98.8636, -5.2751, 5.3714



45.2661, -2.4153, 2.4594

Same Dimension

The Same Dimension uses a secret algorithm to generate beautiful new colors.



57.2730, 11.6722, 11.3824



72.4118, 20.9627, 17.4629



64.7434, -1.7472, 18.5330



31.2321, 0.4347, 2.9710



28.0933, 42.5020, 18.0550



6.1790, 6.5610, 3.9223

Inverse Universe

The Inverse Universe completely reimagines the original color for something new.



65.4687, -15.0796, -4.5610



85.7703, -22.8719, -8.5734



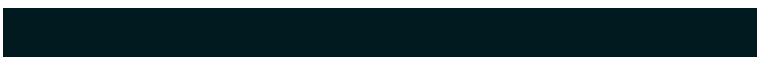
57.2967, -2.2159, -15.7379



32.5060, -3.6912, 0.4997



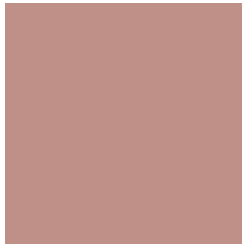
44.5262, -18.3608, -16.0182



9.1769, -4.1021, -2.6149

Previews

White Background



This preview shows how the HunterLab color 57.2717, 11.6744, 11.3815 looks on a white background.

Color Contrast Check

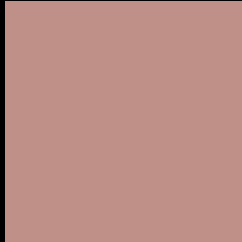
Large Text (above 18pt) WCAG AA × Fail

Any Text WCAG AA × Fail

Large Text (above 18pt) WCAG AAA × Fail

Any Text WCAG AAA × Fail

Black Background



This preview shows how the HunterLab color 57.2717, 11.6744, 11.3815 looks on a black background.

Color Contrast Check

Large Text (above 18pt) WCAG AA ✓ Pass

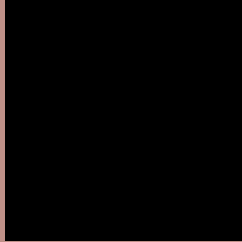
Any Text WCAG AA ✓ Pass

Large Text (above 18pt) WCAG AAA ✓ Pass

Any Text WCAG AAA ✓ Pass

If you want to check with other color combinations, try the [Color Contrast Checker](#).

HunterLab 57.2717, 11.6744, 11.3815 Background



This preview shows how black text looks on a background with the HunterLab color 57.2717, 11.6744, 11.3815.



This preview shows how white text looks on a background with the HunterLab color 57.2717, 11.6744,

Color Blindness Simulation

Color vision deficiency is a very complex topic, and I could not describe the different causes any better than Wikipedia does, so if you want to learn more, you should check out their [article about color blindness](#).

Dichromacy



Original Color

57.2717, 11.6744, 11.3815

Protanopia

57.4219, -3.1846, 8.9036

Deuteranopia

57.4691, 3.9144, 11.8327



Tritanopia

57.4025, 15.6366, 4.9623

Trichromacy



Original Color

57.2717, 11.6744, 11.3815

Protanomaly

57.2689, 2.0548, 9.6383

Deuteranomaly

57.4425, 6.6566, 11.8534

Tritanomaly

57.3818, 13.8985, 7.5033

Monochromacy



Original Color

57.2717, 11.6744, 11.3815

Achromatopsia

58.0658, -3.0982, 3.1548

Achromatomaly

57.4991, 1.8691, 6.1440

CSS Examples

Text

The CSS property to change the color of the text to HunterLab 57.2717, 11.6744, 11.3815 is called "color". The color property can be set on classes, ids or directly on the HTML element.

This example shows how text in the color `rgb(191, 144, 136)` looks like.

```
.text, #text, p{  
    color:rgb(191, 144, 136)  
}
```

If you want to add a text shadow in that color use the text-shadow property, you can generate a text shadow directly with our [CSS Text Shadow Generator](#).

Here you see how black text with a 4 pixel rgb(191, 144, 136) colored shadow looks like.

```
.shadow{ text-shadow: 4px 4px 2px rgb(191, 144, 136) }
```

Border

The CSS property to change the border of an element to HunterLab 57.2717, 11.6744, 11.3815 is called "border". The border property can be set on classes, ids or directly on the HTML element.

This example shows the color as border, it can be applied via the CSS property "border" or "border-color".

```
.border, #border, table{ border:4px solid rgb(191, 144, 136) }
```


If only the border color should be changed use the property border-color.

```
.border{ border-color:rgb(191, 144, 136) }
```

If you want to add a box shadow in that color use:

Here you see how a box with a 4 pixel rgb(191, 144, 136) colored shadow looks like.

```
.boxshadow{ -moz-box-shadow:4px 4px 4px  
4px rgb(191, 144, 136); -webkit-box-  
shadow:4px 4px 4px 4px rgb(191, 144, 136);  
box-shadow:4px 4px 4px 4px rgb(191, 144,  
136) }
```

Background

The CSS property to change the background color of an element to HunterLab 57.2717, 11.6744, 11.3815 is called "background". The background property can be set on classes, ids or directly on the HTML element.

```
.background, #background, body{  
background: rgb(191, 144, 136) }
```

If only the background color should be changed can be used:

```
.background{ background-color: rgb(191,  
144, 136) }
```

This example shows the color as background, it is applied via the CSS property "background".

To optimize and compress your CSS code, you can use our [online CSS compressor and optimizer](#) based on csstidy. If you want to create a linear or radial gradient as background or border, check our [CSS Gradient Generator](#).

Hey! You found this booklet interesting? Support Converting Colors with the new Membership Option!

The pro membership hides all ads, plus gives you double the colors in the color bucket, and more awesome pro features!

[Learn more, Memberships starting at \\$2.50/m!](#)

**Follow me
on Twitter!**

@ConvertingColor