

Converting Colors

HunterLab(57.2727, 18.2603,
18.2579)

Have a look what the booklet for
HunterLab(57.2727, 18.2603,
18.2579) contains.

HunterLab(57.2073, 18.5544, 18.1333)	3
<i>Conversions</i>	4
<i>Details</i>	6
<i>Harmonies</i>	12
<i>Previews</i>	24
<i>Color Blindness Simulation</i>	28
<i>CSS Examples</i>	31

Color

**HunterLab(57.2073, 18.5544,
18.1333)**

Conversions

Conversions Part 1

Format	Color
Hex	CF8A75
RGB	207, 138, 117
RGB Percent	81%, 54%, 46%
CMY	0.1882, 0.4588, 0.5412
CMYK	0.00, 0.33, 0.43, 0.19
HSL	14°, 48%, 64%
HSV	14°, 43%, 81%
XYZ	38.0315, 32.7268, 21.1421
YIQ	156.2370, 47.8650, 8.0970

Conversions

Conversions Part 2

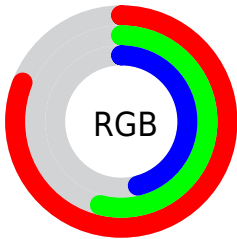
Format	Color
R _Y B	207, 144, 117
Decimal	13601397
CIE Lab	63.94, 23.88, 22.01
CIE LCh	64, 32.476, 42.675
Yxy	32.7284, 0.4138, 0.3561
Android (android.graphics.Color)	4291791477 (0xFFCF8A75)
YUV	156.2370, -19.3438, 44.5192
Hunter-Lab	57.2073, 18.5544, 18.1333

Details

The HunterLab color **57.2073, 18.5544, 18.1333** is a light color, and the websafe version is hex **CC9999**. A complement of this color would be **65.8809, -17.3273, -12.8336**, and the grayscale version is **57.8188, -3.0851, 3.1414**.

A 20% lighter version of the original color is **78.6281, 15.0728, 20.4098**, and **37.0541, 17.3382, 14.1272** is the 20% darker color. If you saturate the color by 10%, you get **52.9794, 24.6489, 20.6111**, and if you desaturate by 10%, it is **61.7750, 12.7704, 15.3202**.

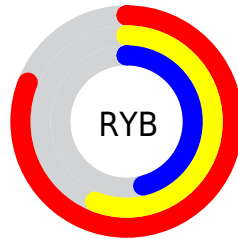
Distribution



Red (81%)

Green (54%)

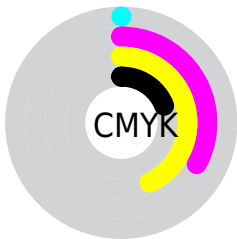
Blue (46%)



Red (81%)

Yellow (56%)

Blue (46%)

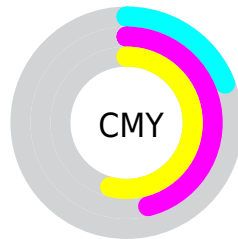


Cyan (0%)

Magenta (33%)

Yellow (43%)

Black (19%)



Cyan (19%)

Magenta (46%)

Yellow (54%)

Brightness & Saturation Gradients

These gradients show how the HunterLab color 57.2073, 18.5544, 18.1333 changes by changing the brightness by 10 percent. The first figure shows a shift by +10% for each color and the second figure -10%.

Similar to the brightness gradients but the following saturation gradients show a change of the HunterLab color 57.2073, 18.5544, 18.1333 by changing the saturation by 10% instead.

■ 57.2073, 18.5544,
18.1333

■ 57.2073, 18.5544,
18.1333

177.3200, 20.9168,
33.5633

■ 46.8171, 17.9063,
16.2628

■ 79.9695, 19.5623,
21.7190

■ 37.1443, 17.1519,
14.3129

■ 92.2675, 19.9459,
23.4581

■ 28.2482, 16.2731,
12.2533

■ 105.1383, 20.2579,
25.1732

■ 20.2037, 15.2521,
10.0356

118.5575, 20.5041,
26.8705

■ 13.1129, 14.0731,
8.5400

132.5035, 20.6891,
28.5547

■ 6.6047, 15.6645,
4.6233

146.9572, 20.8173,

0.0000, NaN, NaN

30.2296

0.0000, NaN, NaN

161.9012, 20.8921,
31.8983

0.0000, NaN, NaN

■ 57.2073, 18.5544,
18.1333

■ 57.2073, 18.5544,
18.1333

■ 52.9794, 24.6489,
20.6111

■ 61.7750, 12.7704,
15.3202

■ 49.1376, 30.9970,
22.6582

■ 66.6343, 7.3248,
12.2440

■ 45.7385, 37.4626,
24.1704

■ 71.7488, 2.2065,
8.9632

■ 42.8377, 43.8241,
25.0478

■ 77.0872, -2.6070,
5.5207

■ 40.4833, 49.7671,
25.2340

■ 82.6231, -7.1447,
1.9482

■ 39.2489, 53.2061,
25.1165

■ 88.3348, -11.4371,
-1.7310

■ 93.9634, -16.8597,
-2.0919

■ 95.9194, -19.8362,
0.2786

Harmonies

Analogous

The Analogous color harmony consists of three colors that are next to each other on the color wheel.



57.2087, 26.2568, 8.5514



57.2073, 18.5544, 18.1333



57.2087, 5.3483, 22.8505

Triad

The Triadic color harmony groups three colors that are evenly spaced from another and form a triangle on the color wheel.



57.2087, 18.5516, 18.1342



57.2087, -26.9677, 10.3554



57.2087, 3.0916, -28.6600

Complementary

The Complementary color scheme is a pair of colors which are on the opposite of each other on the color wheel.



57.2073, 18.5544, 18.1333



65.8809, -17.3273, -12.8336

Split Complementary

Split-complementary colors differ from the complementary color scheme. The scheme consists of three colors, the original color and two neighbors of the complement color.



57.2087, -11.0007, -27.8341



57.2073, 18.5544, 18.1333



57.2087, -27.4438, -2.9156

Square

The Square scheme is like the rectangle color scheme, but the four colors are evenly spaced on the color wheel.



57.2087, 18.5516, 18.1342



57.2087, -20.4949, 19.1747



57.2087, -21.8665, -17.5588



57.2087, 16.7607, -19.5966

Rectangle

The Rectangle color scheme consists of four colors that form a rectangle on the color wheel.



57.2073, 18.5544, 18.1333



57.2087, -4.3309, 23.5356



57.2087, -21.8665, -17.5588



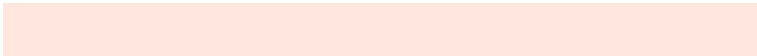
57.2087, -1.7690, -29.5834

Sweetspot

The Sweet Spot groups the original color and five complimentary colors.



57.2087, 18.5516, 18.1342



91.0438, 2.5923, 11.2104



54.3447, 39.4220, -16.5047



41.4389, 1.8516, 5.6254

0.0000, NaN, NaN



46.2646, -2.4686, 2.5136

Same Dimension

The Same Dimension uses a secret algorithm to generate beautiful new colors.



57.2087, 18.5516, 18.1342



67.5065, 30.5354, 25.8461



69.5822, -4.0812, 28.4641



34.9995, 0.1021, 3.5913



31.3484, 41.6384, 20.0457



8.2099, 7.5889, 5.1918

Inverse Universe

The Inverse Universe completely reimagines the original color for something new.



65.8809, -17.3273, -12.8336



80.4529, -23.6398, -20.5605



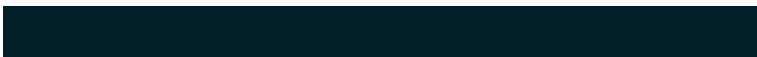
52.2848, 4.5160, -34.6438



35.9441, -3.7329, 0.2377



43.0633, -13.3966, -24.9061



10.7390, -3.9329, -4.9329

Previews

White Background



This preview shows how the HunterLab color 57.2073, 18.5544, 18.1333 looks on a white background.

Color Contrast Check

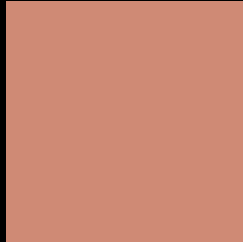
Large Text (above 18pt) WCAG AA × Fail

Any Text WCAG AA × Fail

Large Text (above 18pt) WCAG AAA × Fail

Any Text WCAG AAA × Fail

Black Background



This preview shows how the HunterLab color 57.2073, 18.5544, 18.1333 looks on a black background.

Color Contrast Check

Large Text (above 18pt) WCAG AA ✓ Pass

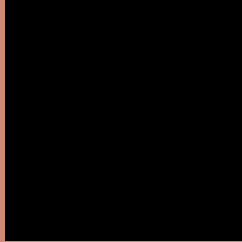
Any Text WCAG AA ✓ Pass

Large Text (above 18pt) WCAG AAA ✓ Pass

Any Text WCAG AAA ✓ Pass

If you want to check with other color combinations, try the [Color Contrast Checker](#).

HunterLab 57.2073, 18.5544, 18.1333 Background



This preview shows how black text looks on a background with the HunterLab color 57.2073, 18.5544, 18.1333.



This preview shows how white text looks on a background with the HunterLab color 57.2073, 18.5544,

Color Blindness Simulation

Color vision deficiency is a very complex topic, and I could not describe the different causes any better than Wikipedia does, so if you want to learn more, you should check out their [article about color blindness](#).

Dichromacy



Original Color

57.2073, 18.5544, 18.1333

Protanopia

57.3783, -4.1596, 15.2350

Deuteranopia

57.2713, 3.7823, 18.5651



Tritanopia

57.1132, 24.6095, 8.2325

Trichromacy



Original Color

57.2073, 18.5544, 18.1333

Protanomaly

57.0993, 3.4970, 16.1268

Deuteranomaly

57.1998, 9.1726, 18.2801

Tritanomaly

56.9729, 22.4229, 12.0274

Monochromacy



Original Color

57.2073, 18.5544, 18.1333

Achromatopsia

57.6586, -3.0765, 3.1327

Achromatomaly

57.0630, 4.3348, 8.6479

CSS Examples

Text

The CSS property to change the color of the text to HunterLab 57.2073, 18.5544, 18.1333 is called "color". The color property can be set on classes, ids or directly on the HTML element.

This example shows how text in the color `rgb(207, 138, 117)` looks like.

```
.text, #text, p{  
    color:rgb(207, 138, 117)  
}
```

If you want to add a text shadow in that color use the text-shadow property, you can generate a text shadow directly with our [CSS Text Shadow Generator](#).

Here you see how black text with a 4 pixel rgb(207, 138, 117) colored shadow looks like.

```
.shadow{ text-shadow: 4px 4px 2px rgb(207, 138, 117) }
```

Border

The CSS property to change the border of an element to HunterLab 57.2073, 18.5544, 18.1333 is called "border". The border property can be set on classes, ids or directly on the HTML element.

This example shows the color as border, it can be applied via the CSS property "border" or "border-color".

```
.border, #border, table{ border:4px solid rgb(207, 138, 117) }
```


If only the border color should be changed use the property `border-color`.

```
.border{ border-color:rgb(207, 138, 117) }
```

If you want to add a box shadow in that color use:

Here you see how a box with a 4 pixel `rgb(207, 138, 117)` colored shadow looks like.

```
.boxshadow{ -moz-box-shadow:4px 4px 4px  
4px rgb(207, 138, 117); -webkit-box-  
shadow:4px 4px 4px 4px rgb(207, 138, 117);  
box-shadow:4px 4px 4px 4px rgb(207, 138,  
117) }
```

Background

The CSS property to change the background color of an element to HunterLab 57.2073, 18.5544, 18.1333 is called "background". The background property can be set on classes, ids or directly on the HTML element.

```
.background, #background, body{  
background: rgb(207, 138, 117) }
```

If only the background color should be changed can be used:

```
.background{ background-color: rgb(207,  
138, 117) }
```

This example shows the color as background, it is applied via the CSS property "background".

To optimize and compress your CSS code, you can use our [online CSS compressor and optimizer](#) based on csstidy. If you want to create a linear or radial gradient as background or border, check our [CSS Gradient Generator](#).

Hey! You found this booklet interesting? Support Converting Colors with the new Membership Option!

The pro membership hides all ads, plus gives you double the colors in the color bucket, and more awesome pro features!

[Learn more, Memberships starting at \\$2.50/m!](#)

**Follow me
on Twitter!**

@ConvertingColor