

Converting Colors

HunterLab(57.3342, 14.7586,
20.3323)

Have a look what the booklet for
HunterLab(57.3342, 14.7586,
20.3323) contains.

HunterLab(57.3342, 14.7586, 20.3323)	3
<i>Conversions</i>	4
<i>Details</i>	6
<i>Harmonies</i>	12
<i>Previews</i>	24
<i>Color Blindness Simulation</i>	28
<i>CSS Examples</i>	31

Color

**HunterLab(57.3342, 14.7586,
20.3323)**

Conversions

Conversions Part 1

Format	Color
Hex	CB8D6E
RGB	203, 141, 110
RGB Percent	80%, 55%, 43%
CMY	0.2039, 0.4470, 0.5686
CMYK	0.00, 0.31, 0.46, 0.20
HSL	20°, 47%, 61%
HSV	20°, 46%, 80%
XYZ	36.9680, 32.8721, 19.1484
YIQ	156.0040, 46.9030, 3.5030

Conversions

Conversions Part 2

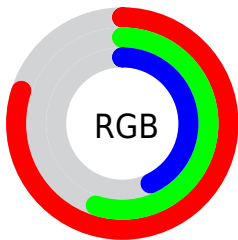
Format	Color
R_{YB}	203, 157, 110
Decimal	13340014
CIE _{Lab}	64.06, 19.90, 25.98
CIE _{LCh}	64, 32.724, 52.547
Yxy	32.8737, 0.4154, 0.3694
Android (android.graphics.Color)	4291530094 (0xFFCB8D6E)
YUV	156.0040, -22.6800, 41.2155
Hunter-Lab	57.3342, 14.7586, 20.3323

Details

The HunterLab color **57.3342, 14.7586, 20.3323** is a dark color, and the websafe version is hex **CC9966**. A complement of this color would be **60.9347, -13.0079, -17.6549**, and the grayscale version is **57.7373, -3.0807, 3.1370**.

A 20% lighter version of the original color is **79.3088, 12.6290, 23.5366**, and **37.1095, 13.8465, 15.8277** is the 20% darker color. If you saturate the color by 10%, you get **53.6012, 19.7960, 22.7494**, and if you desaturate by 10%, it is **61.3233, 10.0556, 17.4416**.

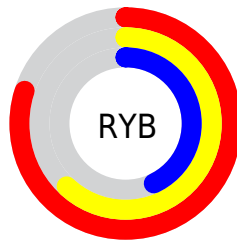
Distribution



Red (80%)

Green (55%)

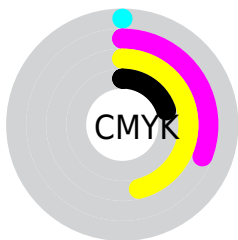
Blue (43%)



Red (80%)

Yellow (62%)

Blue (43%)

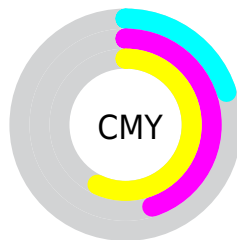


Cyan (0%)

Magenta (31%)

Yellow (46%)

Black (20%)



Cyan (20%)

Magenta (45%)

Yellow (57%)

Brightness & Saturation Gradients

These gradients show how the HunterLab color 57.3342, 14.7586, 20.3323 changes by changing the brightness by 10 percent. The first figure shows a shift by +10% for each color and the second figure -10%.

Similar to the brightness gradients but the following saturation gradients show a change of the HunterLab color 57.3342, 14.7586, 20.3323 by changing the saturation by 10% instead.

■ 57.3342, 14.7586,
20.3323

■ 57.3342, 14.7586,
20.3323

177.5050, 15.7188,
37.5019

■ 46.9358, 14.2963,
18.2016

■ 80.1114, 15.4167,
24.3827

■ 37.2542, 13.7356,
15.9674

■ 92.4163, 15.6351,
26.3323

■ 28.3485, 13.0584,
13.5935

■ 105.2937, 15.7876,
28.2463

■ 20.2934, 12.2451,
11.0244

■ 118.7193, 15.8795,
30.1324

■ 13.1906, 11.2724,
9.2334

132.6714, 15.9150,
31.9966

■ 6.7030, 12.6323,
4.6921

147.1309, 15.8980,

0.0000, NaN, NaN

33.8437

0.0000, NaN, NaN

162.0807, 15.8316,
35.6778

0.0000, NaN, NaN

■ 57.3342, 14.7586,
20.3323

■ 57.3342, 14.7586,
20.3323

■ 53.6012, 19.7960,
22.7494

■ 61.3233, 10.0556,
17.4416

■ 50.1522, 25.1513,
24.6103

■ 65.5356, 5.6947,
14.1477

■ 47.0234, 30.7593,
25.8362

■ 69.9474, 1.6576,
10.5141

■ 44.2500, 36.5045,
26.3654

■ 74.5370, -2.0791,
6.5928

■ 41.8635, 42.2057,
26.1892

■ 79.2860, -5.5421,
2.4263

40.9777, 44.4912,
26.0292

84.1784, -8.7586,
-1.9508

89.2008, -11.7545,
-6.5107

93.7184, -18.0430,
-2.4197

95.6224, -20.9166,
-0.1049

Harmonies

Analogous

The Analogous color harmony consists of three colors that are next to each other on the color wheel.



57.3356, 24.8005, 12.3254



57.3342, 14.7586, 20.3323



57.3356, 0.5718, 23.5688

Triad

The Triadic color harmony groups three colors that are evenly spaced from another and form a triangle on the color wheel.



57.3356, 14.7559, 20.3331



57.3356, -28.0034, 6.4319



57.3356, 7.9395, -26.9048

Complementary

The Complementary color scheme is a pair of colors which are on the opposite of each other on the color wheel.



57.3342, 14.7586, 20.3323



60.9347, -13.0079, -17.6549

Split Complementary

Split-complementary colors differ from the complementary color scheme. The scheme consists of three colors, the original color and two neighbors of the complement color.



57.3356, -6.6082, -29.5994



57.3342, 14.7586, 20.3323



57.3356, -26.4482, -7.9187

Square

The Square scheme is like the rectangle color scheme, but the four colors are evenly spaced on the color wheel.



57.3356, 14.7559, 20.3331



57.3356, -23.4191, 16.9328



57.3356, -18.9396, -21.9577



57.3356, 20.6022, -15.3071

Rectangle

The Rectangle color scheme consists of four colors that form a rectangle on the color wheel.



57.3342, 14.7586, 20.3323



57.3356, -8.9512, 23.3299



57.3356, -18.9396, -21.9577



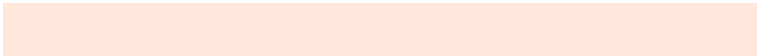
57.3356, 3.0742, -28.9816

Sweetspot

The Sweet Spot groups the original color and five complimentary colors.



57.3356, 14.7559, 20.3331



91.4632, 1.3336, 12.8046



51.7951, 39.1148, -12.0771



41.7243, 1.1231, 6.4215

0.0000, NaN, NaN



46.2646, -2.4686, 2.5136

Same Dimension

The Same Dimension uses a secret algorithm to generate beautiful new colors.



57.3356, 14.7559, 20.3331



69.3969, 25.5641, 29.4165



70.4099, -8.3248, 30.8181



34.3723, -0.3641, 3.7874



32.9195, 34.8521, 20.8950



8.3569, 5.6531, 5.2485

Inverse Universe

The Inverse Universe completely reimagines the original color for something new.



60.9347, -13.0079, -17.6549



74.8855, -17.3437, -29.0645



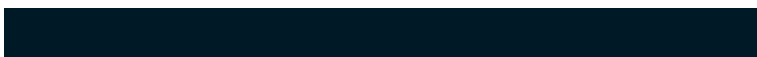
47.3512, 9.8977, -41.3945



34.7452, -3.1834, -0.0962



37.4197, -5.9084, -34.0169



9.2645, -2.4894, -6.2059

Previews

White Background



This preview shows how the HunterLab color 57.3342, 14.7586, 20.3323 looks on a white background.

Color Contrast Check

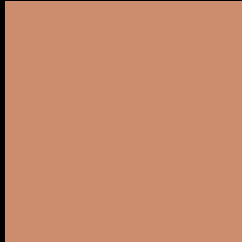
Large Text (above 18pt) WCAG AA × Fail

Any Text WCAG AA × Fail

Large Text (above 18pt) WCAG AAA × Fail

Any Text WCAG AAA × Fail

Black Background



This preview shows how the HunterLab color 57.3342, 14.7586, 20.3323 looks on a black background.

Color Contrast Check

Large Text (above 18pt) WCAG AA ✓ Pass

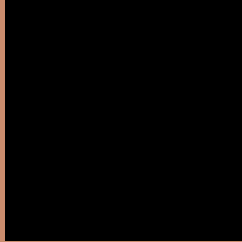
Any Text WCAG AA ✓ Pass

Large Text (above 18pt) WCAG AAA ✓ Pass

Any Text WCAG AAA ✓ Pass

If you want to check with other color combinations, try the [Color Contrast Checker](#).

HunterLab 57.3342, 14.7586, 20.3323 Background



This preview shows how black text looks on a background with the HunterLab color 57.3342, 14.7586, 20.3323.



This preview shows how white text looks on a background with the HunterLab color 57.3342, 14.7586,

Color Blindness Simulation

Color vision deficiency is a very complex topic, and I could not describe the different causes any better than Wikipedia does, so if you want to learn more, you should check out their [article about color blindness](#).

Dichromacy



Original Color

57.3342, 14.7586, 20.3323

Protanopia

57.3752, -4.5533, 18.2002

Deuteranopia

57.3515, 3.7811, 20.7390



Tritanopia

57.2760, 22.7000, 7.5403

Trichromacy



Original Color

57.3342, 14.7586, 20.3323

Protanomaly

57.2109, 2.1119, 18.7920

Deuteranomaly

57.3309, 7.9505, 20.5039

Tritanomaly

57.3145, 19.6005, 12.7049

Monochromacy



Original Color

57.3342, 14.7586, 20.3323

Achromatopsia

57.6586, -3.0765, 3.1327

Achromatomaly

57.3424, 2.2525, 10.1179

CSS Examples

Text

The CSS property to change the color of the text to HunterLab 57.3342, 14.7586, 20.3323 is called "color". The color property can be set on classes, ids or directly on the HTML element.

This example shows how text in the color `rgb(203, 141, 110)` looks like.

```
.text, #text, p{  
    color:rgb(203, 141, 110)  
}
```

If you want to add a text shadow in that color use the text-shadow property, you can generate a text shadow directly with our [CSS Text Shadow Generator](#).

Here you see how black text with a 4 pixel rgb(203, 141, 110) colored shadow looks like.

```
.shadow{ text-shadow: 4px 4px 2px rgb(203, 141, 110) }
```

Border

The CSS property to change the border of an element to HunterLab 57.3342, 14.7586, 20.3323 is called "border". The border property can be set on classes, ids or directly on the HTML element.

This example shows the color as border, it can be applied via the CSS property "border" or "border-color".

```
.border, #border, table{ border:4px solid rgb(203, 141, 110) }
```


If only the border color should be changed use the property `border-color`.

```
.border{ border-color:rgb(203, 141, 110) }
```

If you want to add a box shadow in that color use:

Here you see how a box with a 4 pixel `rgb(203, 141, 110)` colored shadow looks like.

```
.boxshadow{ -moz-box-shadow:4px 4px 4px  
4px rgb(203, 141, 110); -webkit-box-  
shadow:4px 4px 4px 4px rgb(203, 141, 110);  
box-shadow:4px 4px 4px 4px rgb(203, 141,  
110) }
```

Background

The CSS property to change the background color of an element to HunterLab 57.3342, 14.7586, 20.3323 is called "background". The background property can be set on classes, ids or directly on the HTML element.

```
.background, #background, body{  
background: rgb(203, 141, 110) }
```

If only the background color should be changed can be used:

```
.background{ background-color: rgb(203,  
141, 110) }
```

This example shows the color as background, it is applied via the CSS property "background".

To optimize and compress your CSS code, you can use our [online CSS compressor and optimizer](#) based on csstidy. If you want to create a linear or radial gradient as background or border, check our [CSS Gradient Generator](#).

Hey! You found this booklet interesting? Support Converting Colors with the new Membership Option!

The pro membership hides all ads, plus gives you double the colors in the color bucket, and more awesome pro features!

[Learn more, Memberships starting at \\$2.50/m!](#)

**Follow me
on Twitter!**

@ConvertingColor