

Converting Colors

HunterLab(57.3875, 1.8609,
13.2737)

Have a look what the booklet for
HunterLab(57.3875, 1.8609,
13.2737) contains.

HunterLab(57.3462, 1.8722, 13.1687)	3
<i>Conversions</i>	4
<i>Details</i>	6
<i>Harmonies</i>	12
<i>Previews</i>	24
<i>Color Blindness Simulation</i>	28
<i>CSS Examples</i>	31

Color

**HunterLab(57.3462, 1.8722,
13.1687)**

Conversions

Conversions Part 1

Format	Color
Hex	AF9783
RGB	175, 151, 131
RGB Percent	69%, 59%, 51%
CMY	0.3137, 0.4078, 0.4863
CMYK	0.00, 0.14, 0.25, 0.31
HSL	27°, 22%, 60%
HSV	27°, 25%, 69%
XYZ	32.8425, 32.8859, 26.0893
YIQ	155.8960, 20.7240, -1.1320

Conversions

Conversions Part 2

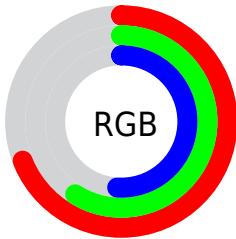
Format	Color
RYB	175, 168, 131
Decimal	11507587
CIELab	64.07, 5.74, 13.83
CIELCh	64, 14.971, 67.467
Yxy	32.8874, 0.3577, 0.3582
Android (android.graphics.Color)	4289697667 (0xFFAF9783)
YUV	155.8960, -12.2737, 16.7542
Hunter-Lab	57.3462, 1.8722, 13.1687

Details

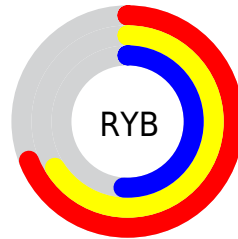
The HunterLab color $57.3462, 1.8722, 13.1687$ is a light color, and the websafe version is hex 999999 . A complement of this color would be $56.0020, -6.1462, -8.5382$, and the grayscale version is $57.6598, -3.0766, 3.1328$.

A 20% lighter version of the original color is $80.0701, 1.2994, 15.7829$, and $37.2305, 2.4781, 10.2722$ is the 20% darker color. If you saturate the color by 10%, you get $54.3170, 4.4569, 16.3329$, and if you desaturate by 10%, it is $60.4981, -0.4489, 9.6090$.

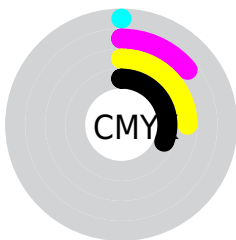
Distribution



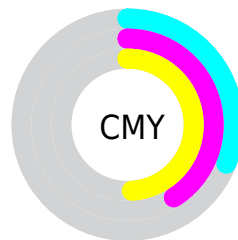
- Red (69%)
- Green (59%)
- Blue (51%)



- Red (69%)
- Yellow (66%)
- Blue (51%)



- Cyan (0%)
- Magenta (14%)
- Yellow (25%)
- Black (31%)



- Cyan (31%)
- Magenta (41%)
- Yellow (49%)

Brightness & Saturation Gradients

These gradients show how the HunterLab color 57.3462, 1.8722, 13.1687 changes by changing the brightness by 10 percent. The first figure shows a shift by +10% for each color and the second figure -10%.

Similar to the brightness gradients but the following saturation gradients show a change of the HunterLab color 57.3462, 1.8722, 13.1687 by changing the saturation by 10% instead.

■ 57.3462, 1.8722,
13.1687

■ 57.3462, 1.8722,
13.1687

177.5224, -2.3546,
25.1242

■ 46.9470, 2.1184,
11.8169

■ 80.1247, 1.2174,
15.8284

■ 37.2645, 2.3062,
10.4351

■ 92.4302, 0.8213,
17.1477

■ 28.3579, 2.4253,
9.0071

■ 105.3083, 0.3833,
18.4659

■ 20.3018, 2.4634,
7.5050

118.7344, -0.0939,
19.7861

■ 13.1979, 2.4021,
5.9628

132.6872, -0.6082,
21.1104

■ 6.7122, 3.3661,
4.6985

147.1472, -1.1574,

0.0000, NaN, NaN

22.4407

0.0000, NaN, NaN

162.0975, -1.7401,
23.7783

0.0000, NaN, NaN

■ 57.3462, 1.8722,
13.1687

■ 57.3462, 1.8722,
13.1687

■ 54.3170, 4.4569,
16.3329

■ 60.4981, -0.4489,
9.6090

■ 51.4183, 7.3268,
19.0512

■ 63.7584, -2.5193,
5.6949

■ 48.6641, 10.4911,
21.2735

■ 67.1191, -4.3606,
1.4660

■ 46.0684, 13.9519,
22.9492

■ 70.5719, -5.9919,
-3.0440

■ 43.6455, 17.6979,
24.0334

■ 74.1096, -7.4318,
-7.8055

■ 41.4100, 21.6981,
24.4972

■ 77.7258, -8.6975,
-12.7930

■ 39.3749, 25.8927,
24.3483

■ 81.4146, -9.8049,
-17.9846

■ 38.4540, 27.9379,
24.1843

■ 84.5384, -14.2948,
-14.5102

■ 87.6611, -19.0457,
-10.3054

Harmonies

Analogous

The Analogous color harmony consists of three colors that are next to each other on the color wheel.



57.3475, 7.3366, 9.9756



57.3462, 1.8722, 13.1687



57.3475, -4.6991, 13.8260

Triad

The Triadic color harmony groups three colors that are evenly spaced from another and form a triangle on the color wheel.



57.3475, 1.8703, 13.1695



57.3475, -15.0850, 1.5342



57.3475, 4.8441, -7.2848

Complementary

The Complementary color scheme is a pair of colors which are on the opposite of each other on the color wheel.



57.3462, 1.8722, 13.1687



56.0020, -6.1462, -8.5382

Split Complementary

Split-complementary colors differ from the complementary color scheme. The scheme consists of three colors, the original color and two neighbors of the complement color.



57.3475, -1.4083, -10.1511



57.3462, 1.8722, 13.1687



57.3475, -12.7705, -4.6991

Square

The Square scheme is like the rectangle color scheme, but the four colors are evenly spaced on the color wheel.



57.3475, 1.8703, 13.1695



57.3475, -14.2956, 7.5482



57.3475, -7.8350, -9.1551



57.3475, 9.1068, -1.6886

Rectangle

The Rectangle color scheme consists of four colors that form a rectangle on the color wheel.



57.3462, 1.8722, 13.1687



57.3475, -8.7869, 12.8132



57.3475, -7.8350, -9.1551



57.3475, 2.8946, -8.6267

Sweetspot

The Sweet Spot groups the original color and five complimentary colors.



57.3475, 1.8703, 13.1695



84.0039, -2.5748, 9.2371



52.6500, 15.4337, -2.3080



39.2962, -1.0226, 4.7260



94.3401, -5.0338, 5.1257



41.3092, -2.2042, 2.2444

Same Dimension

The Same Dimension uses a secret algorithm to generate beautiful new colors.



57.3475, 1.8703, 13.1695



74.5450, 4.3179, 19.9703



63.6893, -8.6507, 19.1037



29.3132, -0.7931, 3.4587



32.7253, 23.1952, 20.5713



6.3884, 1.8263, 3.9685

Inverse Universe

The Inverse Universe completely reimagines the original color for something new.



56.0020, -6.1462, -8.5382



72.3731, -8.5904, -15.0604



49.7501, 4.4771, -17.6006



29.0754, -2.2152, -0.3788



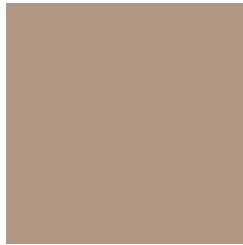
28.7382, 2.8920, -42.1631



5.8077, -1.1898, -4.6907

Previews

White Background



This preview shows how the HunterLab color 57.3462, 1.8722, 13.1687 looks on a white background.

Color Contrast Check

Large Text (above 18pt) WCAG AA × Fail

Any Text WCAG AA × Fail

Large Text (above 18pt) WCAG AAA × Fail

Any Text WCAG AAA × Fail

Black Background



This preview shows how the HunterLab color 57.3462, 1.8722, 13.1687 looks on a black background.

Color Contrast Check

Large Text (above 18pt) WCAG AA ✓ Pass

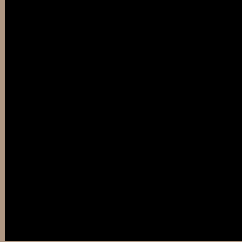
Any Text WCAG AA ✓ Pass

Large Text (above 18pt) WCAG AAA ✓ Pass

Any Text WCAG AAA ✓ Pass

If you want to check with other color combinations, try the [Color Contrast Checker](#).

HunterLab 57.3462, 1.8722, 13.1687 Background



This preview shows how black text looks on a background with the HunterLab color 57.3462, 1.8722, 13.1687.



This preview shows how white text looks on a background with the HunterLab color 57.3462, 1.8722,

Color Blindness Simulation

Color vision deficiency is a very complex topic, and I could not describe the different causes any better than Wikipedia does, so if you want to learn more, you should check out their [article about color blindness](#).

Dichromacy



Original Color

57.3462, 1.8722, 13.1687

Protanopia

57.3783, -3.7888, 12.3603

Deuteranopia

57.1990, 4.2404, 13.0623



Tritanopia

57.3024, 8.9092, 1.5268

Trichromacy



Original Color

57.3462, 1.8722, 13.1687

Protanomaly

57.4392, -2.1409, 12.8231

Deuteranomaly

57.3728, 3.3982, 13.2221

Tritanomaly

57.1812, 6.5257, 5.8666

Monochromacy



Original Color

57.3462, 1.8722, 13.1687

Achromatopsia

57.6586, -3.0765, 3.1327

Achromatomaly

57.4494, -1.3387, 6.8884

CSS Examples

Text

The CSS property to change the color of the text to HunterLab 57.3462, 1.8722, 13.1687 is called "color". The color property can be set on classes, ids or directly on the HTML element.

This example shows how text in the color `rgb(175, 151, 131)` looks like.

```
.text, #text, p{  
    color:rgb(175, 151, 131)  
}
```

If you want to add a text shadow in that color use the text-shadow property, you can generate a text shadow directly with our [CSS Text Shadow Generator](#).

Here you see how black text with a 4 pixel rgb(175, 151, 131) colored shadow looks like.

```
.shadow{ text-shadow: 4px 4px 2px rgb(175, 151, 131) }
```

Border

The CSS property to change the border of an element to HunterLab 57.3462, 1.8722, 13.1687 is called "border". The border property can be set on classes, ids or directly on the HTML element.

This example shows the color as border, it can be applied via the CSS property "border" or "border-color".

```
.border, #border, table{ border:4px solid rgb(175, 151, 131) }
```


If only the border color should be changed use the property `border-color`.

```
.border{ border-color:rgb(175, 151, 131) }
```

If you want to add a box shadow in that color use:

Here you see how a box with a 4 pixel `rgb(175, 151, 131)` colored shadow looks like.

```
.boxshadow{ -moz-box-shadow:4px 4px 4px  
4px rgb(175, 151, 131); -webkit-box-  
shadow:4px 4px 4px 4px rgb(175, 151, 131);  
box-shadow:4px 4px 4px 4px rgb(175, 151,  
131) }
```

Background

The CSS property to change the background color of an element to HunterLab 57.3462, 1.8722, 13.1687 is called "background". The background property can be set on classes, ids or directly on the HTML element.

```
.background, #background, body{  
background: rgb(175, 151, 131) }
```

If only the background color should be changed can be used:

```
.background{ background-color: rgb(175,  
151, 131) }
```

This example shows the color as background, it is applied via the CSS property "background".

To optimize and compress your CSS code, you can use our [online CSS compressor and optimizer](#) based on csstidy. If you want to create a linear or radial gradient as background or border, check our [CSS Gradient Generator](#).

Hey! You found this booklet interesting? Support Converting Colors with the new Membership Option!

The pro membership hides all ads, plus gives you double the colors in the color bucket, and more awesome pro features!

[Learn more, Memberships starting at \\$2.50/m!](#)

**Follow me
on Twitter!**

@ConvertingColor