

Converting Colors

HunterLab(57.3969, 7.0581,
5.8298)

Have a look what the booklet for
HunterLab(57.3969, 7.0581, 5.8298)
contains.

HunterLab(57.4156, 7.3563, 5.7119)	3
<i>Conversions</i>	4
<i>Details</i>	6
<i>Harmonies</i>	12
<i>Previews</i>	24
<i>Color Blindness Simulation</i>	28
<i>CSS Examples</i>	31

Color

**HunterLab(57.4156, 7.3563,
5.7119)**

Conversions

Conversions Part 1

Format	Color
Hex	B39496
RGB	179, 148, 150
RGB Percent	70%, 58%, 59%
CMY	0.2980, 0.4196, 0.4118
CMYK	0.00, 0.17, 0.16, 0.30
HSL	356°, 17%, 64%
HSV	356°, 17%, 70%
XYZ	34.6853, 32.9655, 33.3890
YIQ	157.4970, 17.8340, 7.1940

Conversions

Conversions Part 2

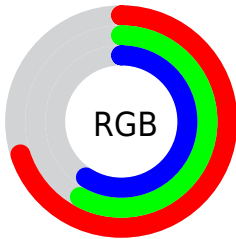
Format	Color
RYB	179, 148, 150
Decimal	11768982
CIELab	64.13, 11.90, 3.29
CIELCh	64, 12.349, 15.464
Yxy	32.9670, 0.3433, 0.3263
Android (android.graphics.Color)	4289959062 (0xFFB39496)
YUV	157.4970, -3.6960, 18.8581
Hunter-Lab	57.4156, 7.3563, 5.7119

Details

The HunterLab color $57.4156, 7.3563, 5.7119$ is a light color, and the websafe version is hex $CC9999$. A complement of this color would be $64.5842, -12.7783, 1.3856$, and the grayscale version is $58.2789, -3.1096, 3.1664$.

A 20% lighter version of the original color is $80.1641, 7.2985, 7.2732$, and $37.2637, 7.2687, 4.3071$ is the 20% darker color. If you saturate the color by 10%, you get $52.2277, 13.9985, 7.1320$, and if you desaturate by 10%, it is $62.9303, 0.9516, 4.4645$.

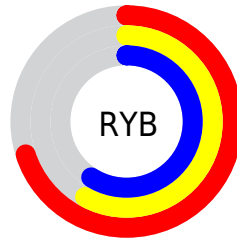
Distribution



Red (70%)

Green (58%)

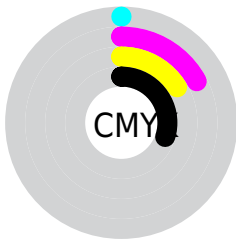
Blue (59%)



Red (70%)

Yellow (58%)

Blue (59%)

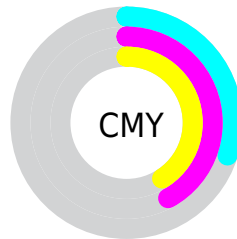


Cyan (0%)

Magenta (17%)

Yellow (16%)

Black (30%)



Cyan (30%)

Magenta (42%)

Yellow (41%)

Brightness & Saturation Gradients

These gradients show how the HunterLab color 57.4156, 7.3563, 5.7119 changes by changing the brightness by 10 percent. The first figure shows a shift by +10% for each color and the second figure -10%.

Similar to the brightness gradients but the following saturation gradients show a change of the HunterLab color 57.4156, 7.3563, 5.7119 by changing the saturation by 10% instead.

■ 57.4156, 7.3563,
5.7119

■ 57.4156, 7.3563,
5.7119

177.6235, 5.4255,
13.4869

■ 47.0119, 7.2857,
4.9714

■ 80.2022, 7.2865,
7.2720

■ 37.3246, 7.1366,
4.2553

■ 92.5116, 7.1629,
8.0890

■ 28.4128, 6.8944,
3.5639

105.3933, 6.9863,
8.9304

■ 20.3509, 6.5412,
2.8954

118.8229, 6.7606,
9.7958

■ 13.2404, 6.0512,
2.2450

132.7789, 6.4891,
10.6846

■ 6.7652, 7.3049,
2.3858

147.2422, 6.1744,

0.0000, NaN, NaN

11.5963

0.0000, NaN, NaN

162.1956, 5.8192,
12.5306

0.0000, NaN, NaN

■ 57.4156, 7.3563,
5.7119

■ 57.4156, 7.3563,
5.7119

■ 52.2277, 13.9985,
7.1320

■ 62.9303, 0.9516,
4.4645

■ 47.4237, 20.8530,
8.7361

■ 68.7191, -5.2155,
3.3669

■ 43.0800, 27.8194,
10.5232

■ 74.7447, -11.1689,
2.3990

■ 39.2852, 34.6871,
12.4598

■ 80.9766, -16.9365,
1.5415

■ 36.1351, 41.0939,
14.4611

■ 87.3900, -22.5464,
0.7773

■ 33.7173, 46.5324,
16.3800

■ 93.8276, -27.8293,
-0.0732

■ 32.0833, 50.4669,
18.0250

■ 93.9807, -26.9541,
-2.2470

■ 31.1858, 52.6675,
19.2047

■ 30.9987, 53.1682,
19.3952

Harmonies

Analogous

The Analogous color harmony consists of three colors that are next to each other on the color wheel.



57.4169, 7.4013, 0.5744



57.4156, 7.3563, 5.7119



57.4169, 4.4466, 9.7684

Triad

The Triadic color harmony groups three colors that are evenly spaced from another and form a triangle on the color wheel.



57.4169, 7.3544, 5.7129



57.4169, -10.3263, 9.6685



57.4169, -5.6656, -7.3522

Complementary

The Complementary color scheme is a pair of colors which are on the opposite of each other on the color wheel.



57.4156, 7.3563, 5.7119



64.5842, -12.7783, 1.3856

Split Complementary

Split-complementary colors differ from the complementary color scheme. The scheme consists of three colors, the original color and two neighbors of the complement color.



57.4169, -10.2125, -4.4205



57.4156, 7.3563, 5.7119



57.4169, -12.8347, 5.5644

Square

The Square scheme is like the rectangle color scheme, but the four colors are evenly spaced on the color wheel.



57.4169, 7.3544, 5.7129



57.4169, -5.8261, 11.9033



57.4169, -12.7938, 0.4115



57.4169, -0.2541, -7.3030

Rectangle

The Rectangle color scheme consists of four colors that form a rectangle on the color wheel.



57.4156, 7.3563, 5.7119



57.4169, 1.3369, 11.4519



57.4169, -12.7938, 0.4115



57.4169, -7.3414, -6.6716

Sweetspot

The Sweet Spot groups the original color and five complimentary colors.



57.4169, 7.3544, 5.7129



85.9166, -0.5950, 5.6304



58.1165, 11.4589, -7.4976



40.1904, -0.0071, 2.7001



95.4677, -5.0939, 5.1869



42.2927, -2.2566, 2.2978

Same Dimension

The Same Dimension uses a secret algorithm to generate beautiful new colors.



57.4169, 7.3544, 5.7129



73.9782, 13.3950, 8.3835



61.1265, 0.3667, 10.4953



29.1785, 1.0456, 2.2198



26.0651, 44.7202, 16.2003



4.6549, 8.0491, 2.4085

Inverse Universe

The Inverse Universe completely reimagines the original color for something new.



57.4169, 7.3544, 5.7129



73.9782, 13.3950, 8.3835



60.5533, -6.0128, -4.5511



29.1785, 1.0456, 2.2198



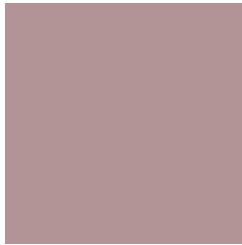
26.0651, 44.7202, 16.2003



4.6549, 8.0491, 2.4085

Previews

White Background



This preview shows how the HunterLab color 57.4156, 7.3563, 5.7119 looks on a white background.

Color Contrast Check

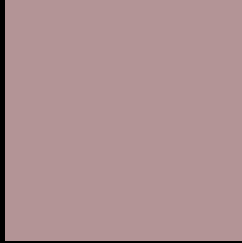
Large Text (above 18pt) WCAG AA × Fail

Any Text WCAG AA × Fail

Large Text (above 18pt) WCAG AAA × Fail

Any Text WCAG AAA × Fail

Black Background



This preview shows how the HunterLab color 57.4156, 7.3563, 5.7119 looks on a black background.

Color Contrast Check

Large Text (above 18pt) WCAG AA ✓ Pass

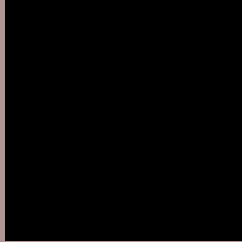
Any Text WCAG AA ✓ Pass

Large Text (above 18pt) WCAG AAA ✓ Pass

Any Text WCAG AAA ✓ Pass

If you want to check with other color combinations, try the [Color Contrast Checker](#).

HunterLab 57.4156, 7.3563, 5.7119 Background



This preview shows how black text looks on a background with the HunterLab color 57.4156, 7.3563, 5.7119.



This preview shows how white text looks on a background with the HunterLab color 57.4156, 7.3563,

Color Blindness Simulation

Color vision deficiency is a very complex topic, and I could not describe the different causes any better than Wikipedia does, so if you want to learn more, you should check out their [article about color blindness](#).

Dichromacy



Original Color

57.4156, 7.3563, 5.7119

Protanopia

57.5732, -1.9986, 3.9578

Deuteranopia

57.3576, 4.3291, 5.5930



Tritanopia

57.4799, 9.4285, 2.2175

Trichromacy



Original Color

57.4156, 7.3563, 5.7119

Protanomaly

57.3266, 1.5098, 4.1816

Deuteranomaly

57.2808, 5.4975, 5.5261

Tritanomaly

57.3910, 8.9607, 3.4845

Monochromacy



Original Color

57.4156, 7.3563, 5.7119

Achromatopsia

58.0658, -3.0982, 3.1548

Achromatomaly

57.8305, 0.3627, 4.2978

CSS Examples

Text

The CSS property to change the color of the text to HunterLab 57.4156, 7.3563, 5.7119 is called "color". The color property can be set on classes, ids or directly on the HTML element.

This example shows how text in the color `rgb(179, 148, 150)` looks like.

```
.text, #text, p{  
    color:rgb(179, 148, 150)  
}
```

If you want to add a text shadow in that color use the text-shadow property, you can generate a text shadow directly with our [CSS Text Shadow Generator](#).

Here you see how black text with a 4 pixel rgb(179, 148, 150) colored shadow looks like.

```
.shadow{ text-shadow: 4px 4px 2px rgb(179, 148, 150) }
```

Border

The CSS property to change the border of an element to HunterLab 57.4156, 7.3563, 5.7119 is called "border".

The border property can be set on classes, ids or directly on the HTML element.

This example shows the color as border, it can be applied via the CSS property "border" or "border-color".

```
.border, #border, table{ border:4px solid rgb(179, 148, 150) }
```


If only the border color should be changed use the property `border-color`.

```
.border{ border-color:rgb(179, 148, 150) }
```

If you want to add a box shadow in that color use:

Here you see how a box with a 4 pixel `rgb(179, 148, 150)` colored shadow looks like.

```
.boxshadow{ -moz-box-shadow:4px 4px 4px  
4px rgb(179, 148, 150); -webkit-box-  
shadow:4px 4px 4px 4px rgb(179, 148, 150);  
box-shadow:4px 4px 4px 4px rgb(179, 148,  
150) }
```

Background

The CSS property to change the background color of an element to HunterLab 57.4156, 7.3563, 5.7119 is called "background". The background property can be set on classes, ids or directly on the HTML element.

```
.background, #background, body{  
background: rgb(179, 148, 150) }
```

If only the background color should be changed can be used:

```
.background{ background-color: rgb(179,  
148, 150) }
```

This example shows the color as background, it is applied via the CSS property "background".

To optimize and compress your CSS code, you can use our [online CSS compressor and optimizer](#) based on csstidy. If you want to create a linear or radial gradient as background or border, check our [CSS Gradient Generator](#).

Hey! You found this booklet interesting? Support Converting Colors with the new Membership Option!

The pro membership hides all ads, plus gives you double the colors in the color bucket, and more awesome pro features!

[Learn more, Memberships starting at \\$2.50/m!](#)

**Follow me
on Twitter!**

@ConvertingColor