

# Converting Colors

HunterLab(57.5039, 9.0647,  
15.2863)

Have a look what the booklet for  
HunterLab(57.5039, 9.0647,  
15.2863) contains.

<b>HunterLab(57.4554, 9.0593, 15.1934)</b> .....	3
<b><i>Conversions</i></b> .....	4
<b><i>Details</i></b> .....	6
<b><i>Harmonies</i></b> .....	12
<b><i>Previews</i></b> .....	24
<b><i>Color Blindness Simulation</i></b> .....	28
<b><i>CSS Examples</i></b> .....	31

# Color

**HunterLab(57.4554, 9.0593,  
15.1934)**

# Conversions

## Conversions Part 1

Format	Color
Hex	BE927E
RGB	190, 146, 126
RGB Percent	75%, 57%, 49%
CMY	0.2549, 0.4274, 0.5059
CMYK	0.00, 0.23, 0.34, 0.25
HSL	19°, 33%, 62%
HSV	19°, 34%, 75%
XYZ	35.2799, 33.0112, 24.2510
YIQ	156.8760, 32.6440, 3.1080

# Conversions

## Conversions Part 2

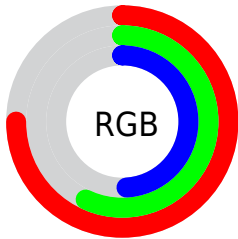
<b>Format</b>	<b>Color</b>
<b>RYB</b>	190, 155, 126
Decimal	12489342
CIELab	64.17, 13.77, 16.99
CIELCh	64, 21.873, 50.975
Yxy	33.0128, 0.3812, 0.3567
Android (android.graphics.Color)	4290679422 (0xFFBE927E)
YUV	156.8760, -15.2219, 29.0497
Hunter-Lab	57.4554, 9.0593, 15.1934

# Details

The HunterLab color  $57.4554, 9.0593, 15.1934$  is a light color, and the websafe version is hex  $CC9999$ . A complement of this color would be  $60.7467, -11.4755, -10.3162$ , and the grayscale version is  $58.0670, -3.0983, 3.1549$ .

A 20% lighter version of the original color is  $80.2106, 9.0637, 18.0597$ , and  $37.2440, 8.7433, 11.9254$  is the 20% darker color. If you saturate the color by 10%, you get  $53.6361, 13.5273, 17.9105$ , and if you desaturate by 10%, it is  $61.4903, 4.8957, 12.1457$ .

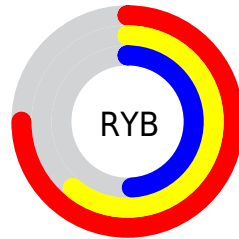
# Distribution



Red (75%)

Green (57%)

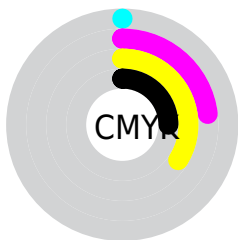
Blue (49%)



Red (75%)

Yellow (61%)

Blue (49%)

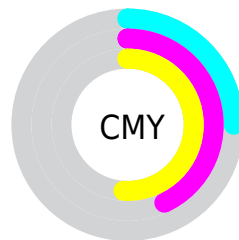


Cyan (0%)

Magenta (23%)

Yellow (34%)

Black (25%)



Cyan (25%)

Magenta (43%)

Yellow (51%)

# Brightness & Saturation Gradients

These gradients show how the HunterLab color 57.4554, 9.0593, 15.1934 changes by changing the brightness by 10 percent. The first figure shows a shift by +10% for each color and the second figure -10%.

Similar to the brightness gradients but the following saturation gradients show a change of the HunterLab color 57.4554, 9.0593, 15.1934 by changing the saturation by 10% instead.




 57.4554, 9.0593,  
15.1934

 57.4554, 9.0593,  
15.1934

177.6815, 7.8112,  
28.4695

 47.0492, 8.8952,  
13.6456


 80.2468, 9.1620,  
18.2038

 37.3591, 8.6475,  
12.0494


 92.5583, 9.1194,  
19.6824

 28.4443, 8.3005,  
10.3832

 105.4421, 9.0205,  
21.1514

 20.3792, 7.8354,  
8.6111

118.8737, 8.8697,  
22.6150

 13.2649, 7.2254,  
6.9602

132.8316, 8.6706,  
24.0763

 6.7955, 8.4684,  
4.7568

147.2968, 8.4261,

0.0000, NaN, NaN

25.5380

0.0000, NaN, NaN

162.2519, 8.1389,  
27.0018

0.0000, NaN, NaN

■ 57.4554, 9.0593,  
15.1934

■ 57.4554, 9.0593,  
15.1934

■ 53.6361, 13.5273,  
17.9105

■ 61.4903, 4.8957,  
12.1457

■ 50.0563, 18.3076,  
20.2290

■ 65.7123, 1.0282,  
8.8198

■ 46.7492, 23.3757,  
22.0750

■ 70.1021, -2.5677,  
5.2610

■ 43.7494, 28.6724,  
23.3704

■ 74.6419, -5.9172,  
1.5051

■ 41.0928, 34.0883,  
24.0475

■ 79.3165, -9.0454,  
-2.4192

■ 38.8125, 39.4506,  
24.0754

■ 84.1133, -11.9766,  
-6.4893

■ 37.5699, 42.6696,  
23.8974

■ 88.8748, -15.5518,  
-8.6226

■ 93.1916, -22.0633,  
-3.1530

■ 94.7033, -24.2830,  
-1.2996

# Harmonies

## Analogous

The Analogous color harmony consists of three colors that are next to each other on the color wheel.



57.4568, 15.2565, 9.0804



57.4554, 9.0593, 15.1934



57.4568, -0.1363, 17.9417

# Triad

The Triadic color harmony groups three colors that are evenly spaced from another and form a triangle on the color wheel.



57.4568, 9.0570, 15.1942



57.4568, -20.2310, 5.8216



57.4568, 3.7084, -15.8630

# Complementary

The Complementary color scheme is a pair of colors which are on the opposite of each other on the color wheel.



57.4554, 9.0593, 15.1934



60.7467, -11.4755, -10.3162

# Split Complementary

Split-complementary colors differ from the complementary color scheme. The scheme consists of three colors, the original color and two neighbors of the complement color.



57.4568, -5.9437, -17.1222



57.4554, 9.0593, 15.1934



57.4568, -19.3512, -3.5394

# Square

The Square scheme is like the rectangle color scheme, but the four colors are evenly spaced on the color wheel.



57.4568, 9.0570, 15.1942



57.4568, -16.7535, 13.1468



57.4568, -14.2656, -12.3025



57.4568, 12.0300, -9.1011



# Rectangle

The Rectangle color scheme consists of four colors that form a rectangle on the color wheel.



57.4554, 9.0593, 15.1934



57.4568, -6.5506, 17.8675



57.4568, -14.2656, -12.3025



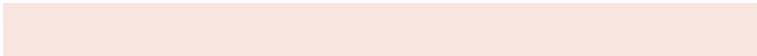
57.4568, 0.4979, -16.9832

# Sweetspot

The Sweet Spot groups the original color and five complimentary colors.



57.4568, 9.0570, 15.1942



90.5159, -0.3606, 10.2188



53.6674, 25.9125, -8.9313



42.0252, 0.1590, 5.1040



98.8636, -5.2751, 5.3714



45.2661, -2.4153, 2.4594



# Same Dimension

The Same Dimension uses a secret algorithm to generate beautiful new colors.



57.4568, 9.0570, 15.1942



73.7316, 16.3385, 23.0527



66.3152, -6.3303, 23.1043



31.6384, -0.2633, 3.4183



30.8396, 34.2169, 19.6023



7.0197, 4.4199, 4.4029



# Inverse Universe

The Inverse Universe completely reimagines the original color for something new.



60.7467, -11.4755, -10.3162



78.9944, -16.6831, -17.8748



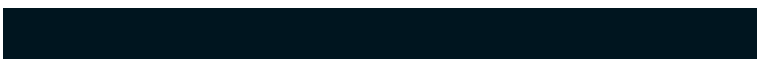
51.5374, 3.6789, -24.2217



32.0822, -3.0083, -0.0067



36.5268, -7.1606, -30.1976



7.9654, -2.4904, -4.5800



# Previews

## White Background



This preview shows how the HunterLab color 57.4554, 9.0593, 15.1934 looks on a white background.

## Color Contrast Check

Large Text (above 18pt) WCAG AA × Fail

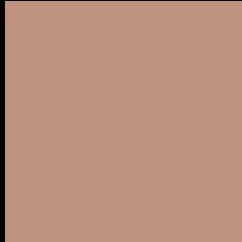
Any Text WCAG AA × Fail

Large Text (above 18pt) WCAG AAA × Fail

Any Text WCAG AAA × Fail



# Black Background



This preview shows how the HunterLab color 57.4554, 9.0593, 15.1934 looks on a black background.

## Color Contrast Check

Large Text (above 18pt) WCAG AA ✓ Pass

Any Text WCAG AA ✓ Pass

Large Text (above 18pt) WCAG AAA ✓ Pass

Any Text WCAG AAA ✓ Pass

If you want to check with other color combinations, try the [Color Contrast Checker](#).

## HunterLab 57.4554, 9.0593, 15.1934 Background



This preview shows how black text looks on a background with the HunterLab color 57.4554, 9.0593, 15.1934.



This preview shows how white text looks on a background with the HunterLab color 57.4554, 9.0593,



# Color Blindness Simulation

Color vision deficiency is a very complex topic, and I could not describe the different causes any better than Wikipedia does, so if you want to learn more, you should check out their [article about color blindness](#).

## Dichromacy



### Original Color

57.4554, 9.0593, 15.1934

### Protanopia

57.4229, -3.7284, 13.1475

### Deuteranopia

57.5475, 3.7107, 15.5359



## Tritanopia

57.4311, 15.7842, 4.5527

# Trichromacy



## Original Color

57.4554, 9.0593, 15.1934

## Protanomaly

57.3809, 0.4485, 13.9058

## Deuteranomaly

57.5898, 5.2713, 15.6041

## Tritanomaly

57.3014, 13.4818, 8.6565

# Monochromacy



## Original Color

57.4554, 9.0593, 15.1934

## Achromatopsia

58.0658, -3.0982, 3.1548

## Achromatomaly

57.6999, 0.9334, 7.6272

# CSS Examples

## Text

The CSS property to change the color of the text to HunterLab 57.4554, 9.0593, 15.1934 is called "color". The color property can be set on classes, ids or directly on the HTML element.

This example shows how text in the color `rgb(190, 146, 126)` looks like.

```
.text, #text, p{  
    color:rgb(190, 146, 126)  
}
```

If you want to add a text shadow in that color use the text-shadow property, you can generate a text shadow directly with our [CSS Text Shadow Generator](#).

Here you see how black text with a 4 pixel rgb(190, 146, 126) colored shadow looks like.

```
.shadow{ text-shadow: 4px 4px 2px rgb(190, 146, 126) }
```

## Border

The CSS property to change the border of an element to HunterLab 57.4554, 9.0593, 15.1934 is called "border". The border property can be set on classes, ids or directly on the HTML element.

This example shows the color as border, it can be applied via the CSS property "border" or "border-color".

```
.border, #border, table{ border:4px solid rgb(190, 146, 126) }
```



If only the border color should be changed use the property `border-color`.

```
.border{ border-color:rgb(190, 146, 126) }
```

If you want to add a box shadow in that color use:

Here you see how a box with a 4 pixel `rgb(190, 146, 126)` colored shadow looks like.

```
.boxshadow{ -moz-box-shadow:4px 4px 4px  
4px rgb(190, 146, 126); -webkit-box-  
shadow:4px 4px 4px 4px rgb(190, 146, 126);  
box-shadow:4px 4px 4px 4px rgb(190, 146,  
126) }
```

# Background

The CSS property to change the background color of an element to HunterLab 57.4554, 9.0593, 15.1934 is called "background". The background property can be set on classes, ids or directly on the HTML element.

```
.background, #background, body{  
background: rgb(190, 146, 126) }
```

If only the background color should be changed can be used:

```
.background{ background-color: rgb(190,  
146, 126) }
```

This example shows the color as background, it is applied via the CSS property "background".

To optimize and compress your CSS code, you can use our [online CSS compressor and optimizer](#) based on csstidy. If you want to create a linear or radial gradient as background or border, check our [CSS Gradient Generator](#).

Hey! You found this booklet interesting? Support Converting Colors with the new Membership Option!

The pro membership hides all ads, plus gives you double the colors in the color bucket, and more awesome pro features!

**[Learn more, Memberships starting at \\$2.50/m!](#)**

**Follow me  
on Twitter!**

@ConvertingColor