

Converting Colors

HunterLab(57.5276, 12.1033,
25.4446)

Have a look what the booklet for
HunterLab(57.5276, 12.1033,
25.4446) contains.

HunterLab(57.5298, 12.0746, 25.4606)	3
<i>Conversions</i>	4
<i>Details</i>	6
<i>Harmonies</i>	12
<i>Previews</i>	24
<i>Color Blindness Simulation</i>	28
<i>CSS Examples</i>	31

Color

**HunterLab(57.5298, 12.0746,
25.4606)**

Conversions

Conversions Part 1

Format	Color
Hex	CB8F5B
RGB	203, 143, 91
RGB Percent	80%, 56%, 36%
CMY	0.2039, 0.4392, 0.6431
CMYK	0.00, 0.30, 0.55, 0.20
HSL	28°, 52%, 58%
HSV	28°, 55%, 80%
XYZ	36.3394, 33.0968, 14.3706
YIQ	155.0120, 52.4520, -3.4520

Conversions

Conversions Part 2

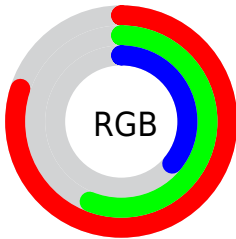
Format	Color
R _Y B	203, 188, 91
Decimal	13340507
CIE Lab	64.24, 17.04, 36.52
CIE LCh	64, 40.294, 64.990
Yxy	33.0984, 0.4336, 0.3949
Android (android.graphics.Color)	4291530587 (0xFFCB8F5B)
YUV	155.0120, -31.5579, 42.0855
Hunter-Lab	57.5298, 12.0746, 25.4606

Details

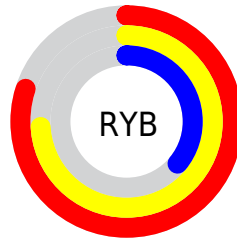
The HunterLab color **57.5298, 12.0746, 25.4606** is a dark color, and the websafe version is hex **CC9966**. The color can be described as middle muted orange. A complement of this color would be **53.5424, -6.4870, -29.6857**, and the grayscale version is **57.3671, -3.0610, 3.1169**.

A 20% lighter version of the original color is **79.4641, 9.3926, 30.0357**, and **37.5688, 11.2467, 19.7397** is the 20% darker color. If you saturate the color by 10%, you get **54.4847, 16.1242, 27.4230**, and if you desaturate by 10%, it is **60.7637, 8.3775, 22.8297**.

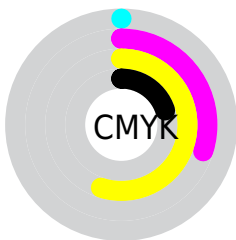
Distribution



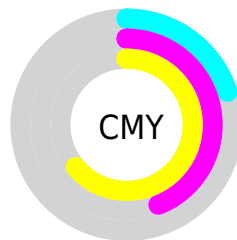
- Red (80%)
- Green (56%)
- Blue (36%)



- Red (80%)
- Yellow (74%)
- Blue (36%)



- Cyan (0%)
- Magenta (30%)
- Yellow (55%)
- Black (20%)



- Cyan (20%)
- Magenta (44%)
- Yellow (64%)

Brightness & Saturation Gradients

These gradients show how the HunterLab color 57.5298, 12.0746, 25.4606 changes by changing the brightness by 10 percent. The first figure shows a shift by +10% for each color and the second figure -10%.

Similar to the brightness gradients but the following saturation gradients show a change of the HunterLab color 57.5298, 12.0746, 25.4606 by changing the saturation by 10% instead.

■ 57.5298, 12.0746,
25.4606

■ 57.5298, 12.0746,
25.4606

177.7900, 12.0032,
47.4063

■ 47.1188, 11.7508,
22.6177

■ 80.3300, 12.4735,
30.7873

■ 37.4236, 11.3355,
19.6100

■ 92.6456, 12.5700,
33.3158

■ 28.5032, 10.8112,
16.3909

■ 105.5332, 12.6052,
35.7764

■ 20.4319, 10.1582,
13.2315

■ 118.9686, 12.5836,
38.1811

■ 13.3106, 9.3506,
9.3174

132.9301, 12.5095,
40.5394

■ 6.8517, 10.4722,
4.7962

147.3987, 12.3861,

0.0000, NaN, NaN

42.8591

0.0000, NaN, NaN

162.3572, 12.2165,
45.1463

0.0000, NaN, NaN

■ 57.5298, 12.0746,
25.4606

■ 57.5298, 12.0746,
25.4606

■ 54.4847, 16.1242,
27.4230

■ 60.7637, 8.3775,
22.8297

■ 51.6407, 20.5214,
28.6630

■ 64.1662, 5.0384,
19.5881

■ 49.0158, 25.2265,
29.1509

■ 67.7238, 2.0415,
15.7974

■ 46.6244, 30.1694,
28.9000

■ 71.4230, -0.6325,
11.5156

■ 45.5499, 32.5774,
28.6380

■ 75.2516, -3.0061,
6.7957

■ 79.1987, -5.1026,
1.6849

■ 83.2547, -6.9452,
-3.7750

■ 87.4109, -8.5563,
-9.5478

■ 90.9679, -13.8003,
-5.8499

Harmonies

Analogous

The Analogous color harmony consists of three colors that are next to each other on the color wheel.



57.5312, 27.6277, 18.8058



57.5298, 12.0746, 25.4606



57.5312, -6.0104, 26.9875

Triad

The Triadic color harmony groups three colors that are evenly spaced from another and form a triangle on the color wheel.



57.5312, 12.0718, 25.4613



57.5312, -33.2661, 0.2365



57.5312, 17.8257, -30.3031

Complementary

The Complementary color scheme is a pair of colors which are on the opposite of each other on the color wheel.



57.5298, 12.0746, 25.4606



53.5424, -6.4870, -29.6857

Split Complementary

Split-complementary colors differ from the complementary color scheme. The scheme consists of three colors, the original color and two neighbors of the complement color.



57.5312, -0.0751, -39.4851



57.5298, 12.0746, 25.4606



57.5312, -28.4383, -18.7588

Square

The Square scheme is like the rectangle color scheme, but the four colors are evenly spaced on the color wheel.



57.5312, 12.0718, 25.4613



57.5312, -30.8393, 15.2313



57.5312, -16.7967, -34.7231



57.5312, 31.2218, -12.3469

Rectangle

The Rectangle color scheme consists of four colors that form a rectangle on the color wheel.



57.5298, 12.0746, 25.4606



57.5312, -16.7873, 25.4638



57.5312, -16.7967, -34.7231



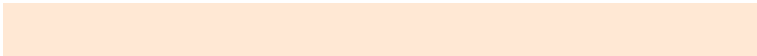
57.5312, 12.0603, -34.7305

Sweetspot

The Sweet Spot groups the original color and five complimentary colors.



57.5312, 12.0718, 25.4613



91.4246, -0.1400, 16.0887



47.3980, 45.4231, -7.4807



41.8431, 0.2538, 7.9763

0.0000, NaN, NaN



46.2646, -2.4686, 2.5136

Same Dimension

The Same Dimension uses a secret algorithm to generate beautiful new colors.



57.5312, 12.0718, 25.4613



69.8557, 21.8072, 35.8279



73.1889, -14.4913, 36.8267



34.7245, -0.9613, 4.1702



36.5821, 25.3959, 22.9863



9.1746, 3.8095, 5.7200

Inverse Universe

The Inverse Universe completely reimagines the original color for something new.



53.5424, -6.4870, -29.6857



63.7325, -6.0947, -48.8482



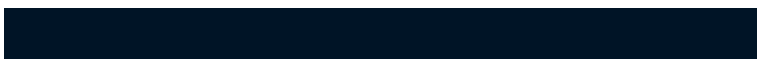
38.7453, 21.2585, -62.2119



34.3840, -2.5940, -0.5339



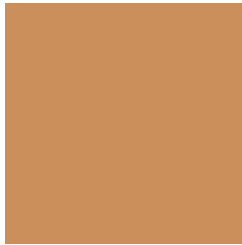
31.3902, 4.2904, -48.4968



8.1198, -0.7389, -8.5541

Previews

White Background



This preview shows how the HunterLab color 57.5298, 12.0746, 25.4606 looks on a white background.

Color Contrast Check

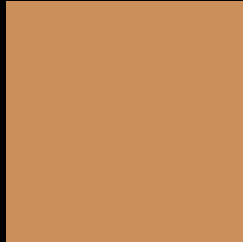
Large Text (above 18pt) WCAG AA × Fail

Any Text WCAG AA × Fail

Large Text (above 18pt) WCAG AAA × Fail

Any Text WCAG AAA × Fail

Black Background



This preview shows how the HunterLab color 57.5298, 12.0746, 25.4606 looks on a black background.

Color Contrast Check

Large Text (above 18pt) WCAG AA ✓ Pass

Any Text WCAG AA ✓ Pass

Large Text (above 18pt) WCAG AAA ✓ Pass

Any Text WCAG AAA ✓ Pass

If you want to check with other color combinations, try the [Color Contrast Checker](#).

HunterLab 57.5298, 12.0746, 25.4606 Background



This preview shows how black text looks on a background with the HunterLab color 57.5298, 12.0746, 25.4606.



This preview shows how white text looks on a background with the HunterLab color 57.5298, 12.0746,

25.4606.

Color Blindness Simulation

Color vision deficiency is a very complex topic, and I could not describe the different causes any better than Wikipedia does, so if you want to learn more, you should check out their [article about color blindness](#).

Dichromacy



Original Color

57.5298, 12.0746, 25.4606

Protanopia

57.5912, -6.0123, 23.9894

Deuteranopia

57.6023, 4.0238, 25.6084



Tritanopia

57.4013, 23.0789, 7.6855

Trichromacy



Original Color

57.5298, 12.0746, 25.4606

Protanomaly

57.3467, 0.4257, 24.3957

Deuteranomaly

57.6261, 6.9022, 25.6776

Tritanomaly

57.5269, 18.6410, 15.4305

Monochromacy



Original Color

57.5298, 12.0746, 25.4606

Achromatopsia

57.2519, -3.0548, 3.1106

Achromatomaly

57.0700, 0.9806, 12.5044

CSS Examples

Text

The CSS property to change the color of the text to HunterLab 57.5298, 12.0746, 25.4606 is called "color". The color property can be set on classes, ids or directly on the HTML element.

This example shows how text in the color `rgb(203, 143, 91)` looks like.

```
.text, #text, p{  
    color:rgb(203, 143, 91)  
}
```

If you want to add a text shadow in that color use the text-shadow property, you can generate a text shadow directly with our [CSS Text Shadow Generator](#).

Here you see how black text with a 4 pixel rgb(203, 143, 91) colored shadow looks like.

```
.shadow{ text-shadow: 4px 4px 2px rgb(203, 143, 91) }
```

Border

The CSS property to change the border of an element to HunterLab 57.5298, 12.0746, 25.4606 is called "border". The border property can be set on classes, ids or directly on the HTML element.

This example shows the color as border, it can be applied via the CSS property "border" or "border-color".

```
.border, #border, table{ border:4px solid rgb(203, 143, 91) }
```


If only the border color should be changed use the property `border-color`.

```
.border{ border-color:rgb(203, 143, 91) }
```

If you want to add a box shadow in that color use:

Here you see how a box with a 4 pixel `rgb(203, 143, 91)` colored shadow looks like.

```
.boxshadow{ -moz-box-shadow:4px 4px 4px  
4px rgb(203, 143, 91); -webkit-box-  
shadow:4px 4px 4px 4px rgb(203, 143, 91);  
box-shadow:4px 4px 4px 4px rgb(203, 143,  
91) }
```

Background

The CSS property to change the background color of an element to HunterLab 57.5298, 12.0746, 25.4606 is called "background". The background property can be set on classes, ids or directly on the HTML element.

```
.background, #background, body{  
background: rgb(203, 143, 91) }
```

If only the background color should be changed can be used:

```
.background{ background-color: rgb(203,  
143, 91) }
```

This example shows the color as background, it is applied via the CSS property "background".

To optimize and compress your CSS code, you can use our [online CSS compressor and optimizer](#) based on csstidy. If you want to create a linear or radial gradient as background or border, check our [CSS Gradient Generator](#).

Hey! You found this booklet interesting? Support Converting Colors with the new Membership Option!

The pro membership hides all ads, plus gives you double the colors in the color bucket, and more awesome pro features!

[Learn more, Memberships starting at \\$2.50/m!](#)

**Follow me
on Twitter!**

@ConvertingColor