

Converting Colors

HunterLab(57.5435, 7.2532,
7.9002)

Have a look what the booklet for
HunterLab(57.5435, 7.2532, 7.9002)
contains.

HunterLab(57.4873, 7.3182, 7.9234)	3
<i>Conversions</i>	4
<i>Details</i>	6
<i>Harmonies</i>	12
<i>Previews</i>	24
<i>Color Blindness Simulation</i>	28
<i>CSS Examples</i>	31

Color

**HunterLab(57.4873, 7.3182,
7.9234)**

Conversions

Conversions Part 1

Format	Color
Hex	B59491
RGB	181, 148, 145
RGB Percent	71%, 58%, 57%
CMY	0.2902, 0.4196, 0.4314
CMYK	0.00, 0.18, 0.20, 0.29
HSL	5°, 20%, 64%
HSV	5°, 20%, 71%
XYZ	34.7568, 33.0479, 31.3351
YIQ	157.5250, 20.6310, 6.0630

Conversions

Conversions Part 2

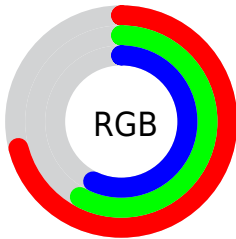
Format	Color
RYB	181, 148, 145
Decimal	11900049
CIELab	64.20, 11.86, 6.23
CIElCh	64, 13.397, 27.720
Yxy	33.0494, 0.3506, 0.3334
Android (android.graphics.Color)	4290090129 (0xFFB59491)
YUV	157.5250, -6.1748, 20.5876
Hunter-Lab	57.4873, 7.3182, 7.9234

Details

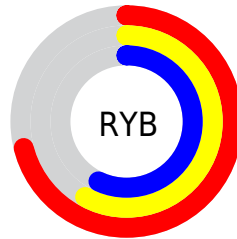
The HunterLab color $57.4873, 7.3182, 7.9234$ is a light color, and the websafe version is hex $CC9999$. A complement of this color would be $64.1839, -12.3767, -1.0499$, and the grayscale version is $58.2993, -3.1107, 3.1675$.

A 20% lighter version of the original color is $80.2304, 7.2250, 9.6340$, and $37.3695, 7.4102, 5.9795$ is the 20% darker color. If you saturate the color by 10%, you get $52.6286, 13.2206, 10.0789$, and if you desaturate by 10%, it is $62.6386, 1.6857, 5.7842$.

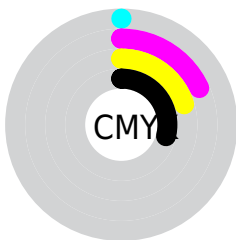
Distribution



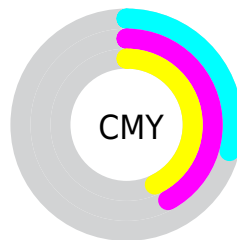
- Red (71%)
- Green (58%)
- Blue (57%)



- Red (71%)
- Yellow (58%)
- Blue (57%)



- Cyan (0%)
- Magenta (18%)
- Yellow (20%)
- Black (29%)



- Cyan (29%)
- Magenta (42%)
- Yellow (43%)

Brightness & Saturation Gradients

These gradients show how the HunterLab color 57.4873, 7.3182, 7.9234 changes by changing the brightness by 10 percent. The first figure shows a shift by +10% for each color and the second figure -10%.

Similar to the brightness gradients but the following saturation gradients show a change of the HunterLab color 57.4873, 7.3182, 7.9234 by changing the saturation by 10% instead.

■ 57.4873, 7.3182,
7.9234

■ 57.4873, 7.3182,
7.9234

177.7280, 5.3688,
16.8299

■ 47.0790, 7.2502,
7.0197

■ 80.2824, 7.2435,
9.7788

■ 37.3867, 7.1039,
6.1266

■ 92.5957, 7.1177,
10.7313

■ 28.4695, 6.8647,
5.2406

105.4811, 6.9390,
11.7017

■ 20.4017, 6.5150,
4.3533

118.9143, 6.7113,
12.6904

■ 13.2844, 6.0288,
3.4485

132.8737, 6.4378,
13.6975

■ 6.8196, 7.2138,
4.1592

147.3404, 6.1213,

0.0000, NaN, NaN

14.7231

0.0000, NaN, NaN

162.2970, 5.7643,
15.7673

0.0000, NaN, NaN

■ 57.4873, 7.3182,
7.9234

■ 57.4873, 7.3182,
7.9234

■ 52.6286, 13.2206,
10.0789

■ 62.6386, 1.6857,
5.7842

■ 48.1094, 19.3870,
12.2229

■ 68.0376, -3.6853,
3.6700

■ 43.9924, 25.7548,
14.3105

■ 73.6522, -8.8224,
1.5855

■ 40.3493, 32.1821,
16.2658

■ 79.4558, -13.7548,
-0.4698

■ 37.2582, 38.4120,
17.9783

■ 85.4268, -18.5112,
-2.4985

■ 34.7933, 44.0611,
19.3116

■ 91.5473, -23.1179,
-4.5041

■ 33.0072, 48.6702,
20.1396

■ 94.1083, -26.4807,
-2.0791

■ 31.8967, 51.8074,
20.5508

■ 31.8878, 51.8323,
20.5565

Harmonies

Analogous

The Analogous color harmony consists of three colors that are next to each other on the color wheel.



57.4886, 8.7049, 2.6985



57.4873, 7.3182, 7.9234



57.4886, 3.1118, 11.5228

Triad

The Triadic color harmony groups three colors that are evenly spaced from another and form a triangle on the color wheel.



57.4886, 7.3163, 7.9243



57.4886, -12.3472, 8.5973



57.4886, -3.5209, -8.7268

Complementary

The Complementary color scheme is a pair of colors which are on the opposite of each other on the color wheel.



57.4873, 7.3182, 7.9234



64.1839, -12.3767, -1.0499

Split Complementary

Split-complementary colors differ from the complementary color scheme. The scheme consists of three colors, the original color and two neighbors of the complement color.



57.4886, -9.0022, -6.7584



57.4873, 7.3182, 7.9234



57.4886, -13.9684, 3.5567

Square

The Square scheme is like the rectangle color scheme, but the four colors are evenly spaced on the color wheel.



57.4886, 7.3163, 7.9243



57.4886, -8.2509, 11.8830



57.4886, -12.7685, -2.1181



57.4886, 2.3000, -7.2625

Rectangle

The Rectangle color scheme consists of four colors that form a rectangle on the color wheel.



57.4873, 7.3182, 7.9234



57.4886, -0.6388, 12.7034



57.4886, -12.7685, -2.1181



57.4886, -5.4625, -8.4407

Sweetspot

The Sweet Spot groups the original color and five complimentary colors.



57.4886, 7.3163, 7.9243



86.5284, -0.5067, 6.6643



57.6969, 14.1726, -7.4820



40.0149, -0.0213, 3.1822



95.4677, -5.0939, 5.1869



42.2927, -2.2566, 2.2978

Same Dimension

The Same Dimension uses a secret algorithm to generate beautiful new colors.



57.4886, 7.3163, 7.9243



73.9491, 13.3108, 11.9050



62.5627, -1.6262, 13.1351



29.3521, 0.6382, 2.6400



26.5597, 42.7568, 17.1145



5.0918, 6.3889, 3.2494

Inverse Universe

The Inverse Universe completely reimagines the original color for something new.



64.1839, -12.3767, -1.0499



84.8614, -18.8615, -2.7410



58.7350, -3.7465, -8.0028



30.8348, -3.7083, 0.6563



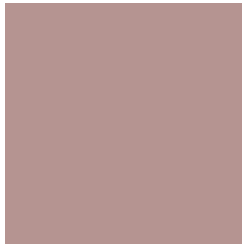
45.9619, -21.5483, -10.9318



8.3670, -4.0870, -1.6353

Previews

White Background



This preview shows how the HunterLab color 57.4873, 7.3182, 7.9234 looks on a white background.

Color Contrast Check

Large Text (above 18pt) WCAG AA × Fail

Any Text WCAG AA × Fail

Large Text (above 18pt) WCAG AAA × Fail

Any Text WCAG AAA × Fail

Black Background



This preview shows how the HunterLab color 57.4873, 7.3182, 7.9234 looks on a black background.

Color Contrast Check

Large Text (above 18pt) WCAG AA ✓ Pass

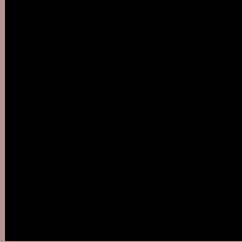
Any Text WCAG AA ✓ Pass

Large Text (above 18pt) WCAG AAA ✓ Pass

Any Text WCAG AAA ✓ Pass

If you want to check with other color combinations, try the [Color Contrast Checker](#).

HunterLab 57.4873, 7.3182, 7.9234 Background



This preview shows how black text looks on a background with the HunterLab color 57.4873, 7.3182, 7.9234.



This preview shows how white text looks on a background with the HunterLab color 57.4873, 7.3182,

7.9234.

Color Blindness Simulation

Color vision deficiency is a very complex topic, and I could not describe the different causes any better than Wikipedia does, so if you want to learn more, you should check out their [article about color blindness](#).

Dichromacy



Original Color

57.4873, 7.3182, 7.9234

Protanopia

57.5206, -2.4642, 6.0924

Deuteranopia

57.4204, 4.2647, 7.7965



Tritanopia

57.4973, 10.8098, 2.7259

Trichromacy



Original Color

57.4873, 7.3182, 7.9234

Protanomaly

57.3754, 1.3939, 6.4270

Deuteranomaly

57.3466, 5.4416, 7.7361

Tritanomaly

57.5434, 9.3424, 4.5698

Monochromacy



Original Color

57.4873, 7.3182, 7.9234

Achromatopsia

58.4734, -3.1200, 3.1770

Achromatomaly

57.8948, 0.5253, 4.8205

CSS Examples

Text

The CSS property to change the color of the text to HunterLab 57.4873, 7.3182, 7.9234 is called "color". The color property can be set on classes, ids or directly on the HTML element.

This example shows how text in the color `rgb(181, 148, 145)` looks like.

```
.text, #text, p{  
    color:rgb(181, 148, 145)  
}
```

If you want to add a text shadow in that color use the text-shadow property, you can generate a text shadow directly with our [CSS Text Shadow Generator](#).

Here you see how black text with a 4 pixel rgb(181, 148, 145) colored shadow looks like.

```
.shadow{ text-shadow: 4px 4px 2px rgb(181, 148, 145) }
```

Border

The CSS property to change the border of an element to HunterLab 57.4873, 7.3182, 7.9234 is called "border".

The border property can be set on classes, ids or directly on the HTML element.

This example shows the color as border, it can be applied via the CSS property "border" or "border-color".

```
.border, #border, table{ border:4px solid rgb(181, 148, 145) }
```


If only the border color should be changed use the property `border-color`.

```
.border{ border-color:rgb(181, 148, 145) }
```

If you want to add a box shadow in that color use:

Here you see how a box with a 4 pixel `rgb(181, 148, 145)` colored shadow looks like.

```
.boxshadow{ -moz-box-shadow:4px 4px 4px  
4px rgb(181, 148, 145); -webkit-box-  
shadow:4px 4px 4px 4px rgb(181, 148, 145);  
box-shadow:4px 4px 4px 4px rgb(181, 148,  
145) }
```

Background

The CSS property to change the background color of an element to HunterLab 57.4873, 7.3182, 7.9234 is called "background". The background property can be set on classes, ids or directly on the HTML element.

```
.background, #background, body{  
background: rgb(181, 148, 145) }
```

If only the background color should be changed can be used:

```
.background{ background-color: rgb(181,  
148, 145) }
```

This example shows the color as background, it is applied via the CSS property "background".

To optimize and compress your CSS code, you can use our [online CSS compressor and optimizer](#) based on csstidy. If you want to create a linear or radial gradient as background or border, check our [CSS Gradient Generator](#).

Hey! You found this booklet interesting? Support Converting Colors with the new Membership Option!

The pro membership hides all ads, plus gives you double the colors in the color bucket, and more awesome pro features!

[Learn more, Memberships starting at \\$2.50/m!](#)

**Follow me
on Twitter!**

@ConvertingColor