

Converting Colors

HunterLab(57.5509, 1.1693,
12.9936)

Have a look what the booklet for
HunterLab(57.5509, 1.1693,
12.9936) contains.

HunterLab(57.5509, 1.1693, 12.9936)	3
<i>Conversions</i>	4
<i>Details</i>	6
<i>Harmonies</i>	12
<i>Previews</i>	24
<i>Color Blindness Simulation</i>	28
<i>CSS Examples</i>	31

Color

**HunterLab(57.5509, 1.1693,
12.9936)**

Conversions

Conversions Part 1

Format	Color
Hex	AE9884
RGB	174, 152, 132
RGB Percent	68%, 60%, 52%
CMY	0.3176, 0.4039, 0.4823
CMYK	0.00, 0.13, 0.24, 0.32
HSL	29°, 21%, 60%
HSV	29°, 24%, 68%
XYZ	32.8486, 33.1211, 26.4915
YIQ	156.2980, 19.5320, -1.5560

Conversions

Conversions Part 2

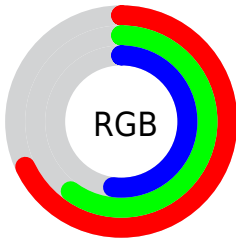
Format	Color
RYB	174, 170, 132
Decimal	11442308
CIELab	64.26, 4.94, 13.52
CIELCh	64, 14.395, 69.937
Yxy	33.1226, 0.3553, 0.3582
Android (android.graphics.Color)	4289632388 (0xFFAE9884)
YUV	156.2980, -11.9789, 15.5247
Hunter-Lab	57.5509, 1.1693, 12.9936

Details

The HunterLab color $57.5509, 1.1693, 12.9936$ is a light color, and the websafe version is hex 999999 . A complement of this color would be $55.7422, -5.6090, -8.3434$, and the grayscale version is $57.8226, -3.0853, 3.1416$.

A 20% lighter version of the original color is $80.2922, 0.5715, 15.5926$, and $37.4124, 1.8024, 10.1157$ is the 20% darker color. If you saturate the color by 10%, you get $54.6257, 3.5251, 16.2476$, and if you desaturate by 10%, it is $60.5906, -0.9263, 9.3313$.

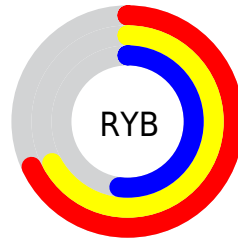
Distribution



Red (68%)

Green (60%)

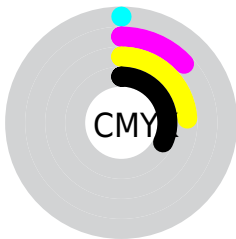
Blue (52%)



Red (68%)

Yellow (67%)

Blue (52%)

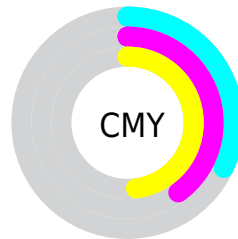


Cyan (0%)

Magenta (13%)

Yellow (24%)

Black (32%)



Cyan (32%)

Magenta (40%)

Yellow (48%)

Brightness & Saturation Gradients

These gradients show how the HunterLab color 57.5509, 1.1693, 12.9936 changes by changing the brightness by 10 percent. The first figure shows a shift by +10% for each color and the second figure -10%.

Similar to the brightness gradients but the following saturation gradients show a change of the HunterLab color 57.5509, 1.1693, 12.9936 by changing the saturation by 10% instead.

■ 57.5509, 1.1693,
12.9936

■ 57.5509, 1.1693,
12.9936

177.8206, -3.3664,
24.8228

■ 47.1385, 1.4586,
11.6610

■ 80.3535, 0.4352,
15.6194

■ 37.4418, 1.6926,
10.3003

■ 92.6702, 0.0024,
16.9233

■ 28.5198, 1.8616,
8.8962

■ 105.5589, -0.4707,
18.2272

■ 20.4467, 1.9545,
7.4217

118.9953, -0.9818,
19.5337

■ 13.3235, 1.9543,
5.8840

132.9578, -1.5285,
20.8450

■ 6.8674, 2.7666,
4.8072

147.4274, -2.1093,

0.0000, NaN, NaN

22.1628

0.0000, NaN, NaN

162.3868, -2.7223,
23.4884

0.0000, NaN, NaN

■ 57.5509, 1.1693,
12.9936

■ 57.5509, 1.1693,
12.9936

■ 54.6257, 3.5251,
16.2476

■ 60.5906, -0.9263,
9.3313

■ 51.8214, 6.1628,
19.0445

■ 63.7316, -2.7743,
5.3007

■ 49.1505, 9.0923,
21.3368

■ 66.9669, -4.3952,
0.9408

■ 46.6250, 12.3180,
23.0767

■ 70.2891, -5.8077,
-3.7147

■ 44.2574, 15.8331,
24.2224

■ 73.6915, -7.0295,
-8.6360

■ 42.0603, 19.6140,
24.7471

■ 77.1684, -8.0772,
-13.7973

■ 40.0447, 23.6137,
24.6550

■ 80.7143, -8.9660,
-19.1760

■ 38.9431, 25.9928,
24.4516

■ 83.6772, -13.3116,
-15.7064

■ 86.6462, -17.8600,
-11.6596

Harmonies

Analogous

The Analogous color harmony consists of three colors that are next to each other on the color wheel.



57.5522, 6.5732, 10.0900



57.5509, 1.1693, 12.9936



57.5522, -5.1623, 13.4234

Triad

The Triadic color harmony groups three colors that are evenly spaced from another and form a triangle on the color wheel.



57.5522, 1.1674, 12.9944



57.5522, -14.5945, 1.0957



57.5522, 4.9615, -6.4856

Complementary

The Complementary color scheme is a pair of colors which are on the opposite of each other on the color wheel.



57.5509, 1.1693, 12.9936



55.7422, -5.6090, -8.3434

Split Complementary

Split-complementary colors differ from the complementary color scheme. The scheme consists of three colors, the original color and two neighbors of the complement color.



57.5522, -0.9554, -9.4984



57.5509, 1.1693, 12.9936



57.5522, -12.1247, -4.8187

Square

The Square scheme is like the rectangle color scheme, but the four colors are evenly spaced on the color wheel.



57.5522, 1.1674, 12.9944



57.5522, -14.0814, 6.9701



57.5522, -7.1959, -8.8574



57.5522, 8.8285, -0.9885

Rectangle

The Rectangle color scheme consists of four colors that form a rectangle on the color wheel.



57.5509, 1.1693, 12.9936



57.5522, -9.0313, 12.3020



57.5522, -7.1959, -8.8574



57.5522, 3.1361, -7.8481

Sweetspot

The Sweet Spot groups the original color and five complimentary colors.



57.5522, 1.1674, 12.9944



84.5572, -3.0263, 8.8090



52.7712, 14.4475, -1.7750



39.7479, -1.3603, 4.3035



94.3401, -5.0338, 5.1257



41.3092, -2.2042, 2.2444

Same Dimension

The Same Dimension uses a secret algorithm to generate beautiful new colors.



57.5522, 1.1674, 12.9944



75.3734, 3.2338, 19.9291



63.5600, -8.7594, 18.6484



29.3615, -0.8745, 3.5110



33.3424, 21.7176, 20.9256



6.4755, 1.6534, 4.0191

Inverse Universe

The Inverse Universe completely reimagines the original color for something new.



55.7422, -5.6090, -8.3434



72.4125, -7.8229, -14.9905



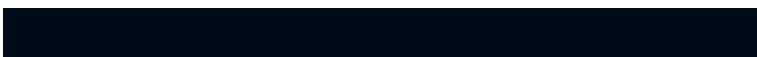
49.8465, 4.4365, -16.8381



29.0262, -2.1345, -0.4386



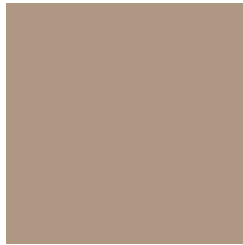
27.8906, 4.4554, -44.4788



5.7016, -1.0282, -4.9069

Previews

White Background



This preview shows how the HunterLab color 57.5509, 1.1693, 12.9936 looks on a white background.

Color Contrast Check

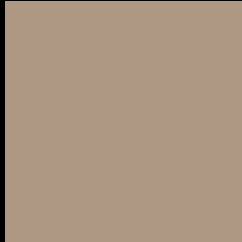
Large Text (above 18pt) WCAG AA × Fail

Any Text WCAG AA × Fail

Large Text (above 18pt) WCAG AAA × Fail

Any Text WCAG AAA × Fail

Black Background



This preview shows how the HunterLab color 57.5509, 1.1693, 12.9936 looks on a black background.

Color Contrast Check

Large Text (above 18pt) WCAG AA ✓ Pass

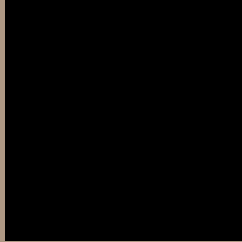
Any Text WCAG AA ✓ Pass

Large Text (above 18pt) WCAG AAA ✓ Pass

Any Text WCAG AAA ✓ Pass

If you want to check with other color combinations, try the [Color Contrast Checker](#).

HunterLab 57.5509, 1.1693, 12.9936 Background



This preview shows how black text looks on a background with the HunterLab color 57.5509, 1.1693, 12.9936.



This preview shows how white text looks on a background with the HunterLab color 57.5509, 1.1693,

Color Blindness Simulation

Color vision deficiency is a very complex topic, and I could not describe the different causes any better than Wikipedia does, so if you want to learn more, you should check out their [article about color blindness](#).

Dichromacy



Original Color

57.5509, 1.1693, 12.9936

Protanopia

57.4947, -3.3344, 12.1111

Deuteranopia

57.4999, 3.8728, 12.9895



Tritanopia

57.5022, 8.2258, 1.2848

Trichromacy



Original Color

57.5509, 1.1693, 12.9936

Protanomaly

57.5582, -1.6815, 12.5797

Deuteranomaly

57.5728, 2.6868, 13.0422

Tritanomaly

57.3821, 5.8344, 5.6471

Monochromacy



Original Color

57.5509, 1.1693, 12.9936

Achromatopsia

57.6586, -3.0765, 3.1327

Achromatomaly

57.7372, -1.8243, 7.1993

CSS Examples

Text

The CSS property to change the color of the text to HunterLab 57.5509, 1.1693, 12.9936 is called "color". The color property can be set on classes, ids or directly on the HTML element.

This example shows how text in the color `rgb(174, 152, 132)` looks like.

```
.text, #text, p{  
    color:rgb(174, 152, 132)  
}
```

If you want to add a text shadow in that color use the text-shadow property, you can generate a text shadow directly with our [CSS Text Shadow Generator](#).

Here you see how black text with a 4 pixel rgb(174, 152, 132) colored shadow looks like.

```
.shadow{ text-shadow: 4px 4px 2px rgb(174, 152, 132) }
```

Border

The CSS property to change the border of an element to HunterLab 57.5509, 1.1693, 12.9936 is called "border". The border property can be set on classes, ids or directly on the HTML element.

This example shows the color as border, it can be applied via the CSS property "border" or "border-color".

```
.border, #border, table{ border:4px solid rgb(174, 152, 132) }
```


If only the border color should be changed use the property `border-color`.

```
.border{ border-color:rgb(174, 152, 132) }
```

If you want to add a box shadow in that color use:

Here you see how a box with a 4 pixel `rgb(174, 152, 132)` colored shadow looks like.

```
.boxshadow{ -moz-box-shadow:4px 4px 4px  
4px rgb(174, 152, 132); -webkit-box-  
shadow:4px 4px 4px 4px rgb(174, 152, 132);  
box-shadow:4px 4px 4px 4px rgb(174, 152,  
132) }
```

Background

The CSS property to change the background color of an element to HunterLab 57.5509, 1.1693, 12.9936 is called "background". The background property can be set on classes, ids or directly on the HTML element.

```
.background, #background, body{  
background: rgb(174, 152, 132) }
```

If only the background color should be changed can be used:

```
.background{ background-color: rgb(174,  
152, 132) }
```

This example shows the color as background, it is applied via the CSS property "background".

To optimize and compress your CSS code, you can use our [online CSS compressor and optimizer](#) based on csstidy. If you want to create a linear or radial gradient as background or border, check our [CSS Gradient Generator](#).

Hey! You found this booklet interesting? Support Converting Colors with the new Membership Option!

The pro membership hides all ads, plus gives you double the colors in the color bucket, and more awesome pro features!

[Learn more, Memberships starting at \\$2.50/m!](#)

**Follow me
on Twitter!**

@ConvertingColor