

Converting Colors

HunterLab(57.5576, 14.2942,
8.9012)

Have a look what the booklet for
HunterLab(57.5576, 14.2942,
8.9012) contains.

HunterLab(57.5304, 14.2106, 8.9173)	3
<i>Conversions</i>	4
<i>Details</i>	6
<i>Harmonies</i>	12
<i>Previews</i>	24
<i>Color Blindness Simulation</i>	28
<i>CSS Examples</i>	31

Color

**HunterLab(57.5304, 14.2106,
8.9173)**

Conversions

Conversions Part 1

Format	Color
Hex	C28F8F
RGB	194, 143, 143
RGB Percent	76%, 56%, 56%
CMY	0.2392, 0.4392, 0.4392
CMYK	0.00, 0.26, 0.26, 0.24
HSL	0°, 29%, 66%
HSV	0°, 26%, 76%
XYZ	37.0286, 33.0975, 30.4235
YIQ	158.2490, 30.3960, 10.8120

Conversions

Conversions Part 2

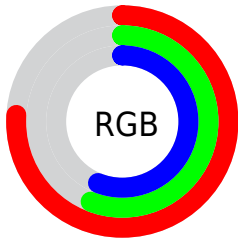
Format	Color
RYB	194, 143, 143
Decimal	12750735
CIELab	64.24, 19.31, 7.59
CIELCh	64, 20.753, 21.466
Yxy	33.0990, 0.3683, 0.3292
Android (android.graphics.Color)	4290940815 (0xFFC28F8F)
YUV	158.2490, -7.5178, 31.3536
Hunter-Lab	57.5304, 14.2106, 8.9173

Details

The HunterLab color **57.5304, 14.2106, 8.9173** is a light color, and the websafe version is hex **CC9999**. A complement of this color would be **69.5103, -18.0088, -1.0181**, and the grayscale version is **58.5971, -3.1266, 3.1837**.

A 20% lighter version of the original color is **80.2951, 14.7148, 10.7302**, and **37.3277, 13.3418, 6.7857** is the 20% darker color. If you saturate the color by 10%, you get **52.1837, 21.6255, 11.0184**, and if you desaturate by 10%, it is **63.3051, 7.0703, 6.9423**.

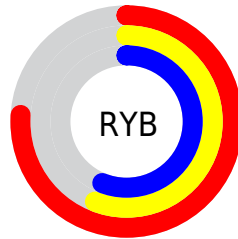
Distribution



Red (76%)

Green (56%)

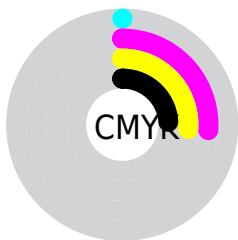
Blue (56%)



Red (76%)

Yellow (56%)

Blue (56%)

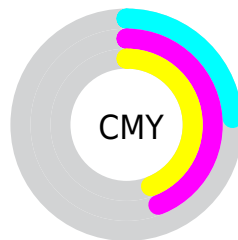


Cyan (0%)

Magenta (26%)

Yellow (26%)

Black (24%)



Cyan (24%)

Magenta (44%)

Yellow (44%)

Brightness & Saturation Gradients

These gradients show how the HunterLab color 57.5304, 14.2106, 8.9173 changes by changing the brightness by 10 percent. The first figure shows a shift by +10% for each color and the second figure -10%.

Similar to the brightness gradients but the following saturation gradients show a change of the HunterLab color 57.5304, 14.2106, 8.9173 by changing the saturation by 10% instead.

■ 57.5304, 14.2106,
8.9173

■ 57.5304, 14.2106,
8.9173

177.7908, 14.9531,
18.3579

■ 47.1193, 13.7783,
7.9360

■ 80.3306, 14.8142,
10.9128

■ 37.4241, 13.2486,
6.9585

■ 92.6462, 15.0067,
11.9294

■ 28.5036, 12.6041,
5.9793

■ 105.5339, 15.1344,
12.9607

■ 20.4322, 11.8252,
4.9867

118.9692, 15.2023,
14.0075

■ 13.3109, 10.8878,
3.9590

132.9308, 15.2146,
15.0703

■ 6.8520, 11.9759,
4.7964

147.3994, 15.1752,

0.0000, NaN, NaN

16.1496

0.0000, NaN, NaN

162.3579, 15.0871,
17.2454

0.0000, NaN, NaN

■ 57.5304, 14.2106,
8.9173

■ 57.5304, 14.2106,
8.9173

■ 52.1837, 21.6255,
11.0184

■ 63.3051, 7.0703,
6.9423

■ 47.3450, 29.2283,
13.2174

■ 69.4359, 0.2327,
5.0928

■ 43.1151, 36.8008,
15.4500

■ 75.8702, -6.3197,
3.3606

■ 39.6026, 43.9545,
17.5937

■ 82.5652, -12.6179,
1.7325

■ 36.9074, 50.1265,
19.4673

■ 89.4872, -18.6971,
0.1940

■ 35.0898, 54.7004,
20.8684

■ 94.9786, -23.2710,
-0.9405

■ 34.1201, 57.2982,
21.6684

■ 33.8670, 57.9958,
21.8840

Harmonies

Analogous

The Analogous color harmony consists of three colors that are next to each other on the color wheel.



57.5317, 15.3538, 0.5956



57.5304, 14.2106, 8.9173



57.5317, 8.2871, 14.7316

Triad

The Triadic color harmony groups three colors that are evenly spaced from another and form a triangle on the color wheel.



57.5317, 14.2083, 8.9183



57.5317, -16.1816, 12.6012



57.5317, -5.6571, -15.9702

Complementary

The Complementary color scheme is a pair of colors which are on the opposite of each other on the color wheel.



57.5304, 14.2106, 8.9173



69.5103, -18.0088, -1.0181

Split Complementary

Split-complementary colors differ from the complementary color scheme. The scheme consists of three colors, the original color and two neighbors of the complement color.



57.5317, -13.6145, -11.5365



57.5304, 14.2106, 8.9173



57.5317, -19.4375, 5.5572

Square

The Square scheme is like the rectangle color scheme, but the four colors are evenly spaced on the color wheel.



57.5317, 14.2083, 8.9183



57.5317, -9.3623, 16.6157



57.5317, -18.5279, -3.3265



57.5317, 3.4989, -14.6952

Rectangle

The Rectangle color scheme consists of four colors that form a rectangle on the color wheel.



57.5304, 14.2106, 8.9173



57.5317, 2.6193, 16.8315



57.5317, -18.5279, -3.3265



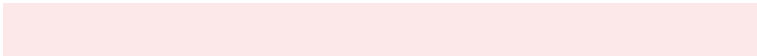
57.5317, -8.5520, -15.0758

Sweetspot

The Sweet Spot groups the original color and five complimentary colors.



57.5317, 14.2083, 8.9183



91.9116, 1.9756, 7.3003



59.1690, 22.5814, -14.2886



42.4115, 1.5781, 3.5921

0.0000, NaN, NaN



46.2646, -2.4686, 2.5136

Same Dimension

The Same Dimension uses a secret algorithm to generate beautiful new colors.



57.5317, 14.2083, 8.9183



72.8874, 25.2945, 13.7437



64.5315, 1.3137, 15.9107



31.7459, 1.0845, 2.6563



27.4609, 47.0252, 17.7445



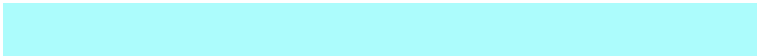
5.7085, 9.7735, 3.6886

Inverse Universe

The Inverse Universe completely reimagines the original color for something new.



69.5103, -18.0088, -1.0181



92.5687, -27.9167, -2.6750



61.5835, -5.8576, -11.2934



33.8058, -4.4129, 0.9620



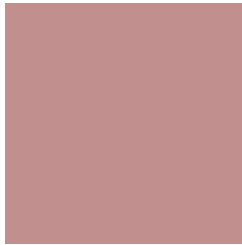
52.8434, -28.0124, -5.5789



10.9844, -5.8230, -1.1594

Previews

White Background



This preview shows how the HunterLab color 57.5304, 14.2106, 8.9173 looks on a white background.

Color Contrast Check

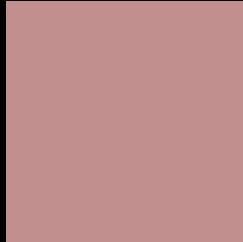
Large Text (above 18pt) WCAG AA × Fail

Any Text WCAG AA × Fail

Large Text (above 18pt) WCAG AAA × Fail

Any Text WCAG AAA × Fail

Black Background



This preview shows how the HunterLab color 57.5304, 14.2106, 8.9173 looks on a black background.

Color Contrast Check

Large Text (above 18pt) WCAG AA ✓ Pass

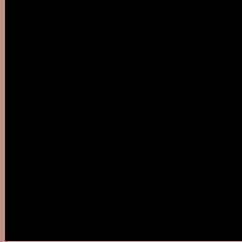
Any Text WCAG AA ✓ Pass

Large Text (above 18pt) WCAG AAA ✓ Pass

Any Text WCAG AAA ✓ Pass

If you want to check with other color combinations, try the [Color Contrast Checker](#).

HunterLab 57.5304, 14.2106, 8.9173 Background



This preview shows how black text looks on a background with the HunterLab color 57.5304, 14.2106, 8.9173.



This preview shows how white text looks on a background with the HunterLab color 57.5304, 14.2106,

Color Blindness Simulation

Color vision deficiency is a very complex topic, and I could not describe the different causes any better than Wikipedia does, so if you want to learn more, you should check out their [article about color blindness](#).

Dichromacy



Original Color

57.5304, 14.2106, 8.9173

Protanopia

57.5485, -2.3118, 5.6933

Deuteranopia

57.4420, 4.1780, 9.0541



Tritanopia

57.6325, 16.3605, 5.2393

Trichromacy



Original Color

57.5304, 14.2106, 8.9173

Protanomaly

57.4547, 3.0544, 6.9713

Deuteranomaly

57.3478, 8.0983, 9.0213

Tritanomaly

57.5483, 15.9269, 6.4455

Monochromacy



Original Color

57.5304, 14.2106, 8.9173

Achromatopsia

58.4734, -3.1200, 3.1770

Achromatomaly

58.0864, 2.6331, 5.0772

CSS Examples

Text

The CSS property to change the color of the text to HunterLab 57.5304, 14.2106, 8.9173 is called "color". The color property can be set on classes, ids or directly on the HTML element.

This example shows how text in the color `rgb(194, 143, 143)` looks like.

```
.text, #text, p{  
    color:rgb(194, 143, 143)  
}
```

If you want to add a text shadow in that color use the text-shadow property, you can generate a text shadow directly with our [CSS Text Shadow Generator](#).

Here you see how black text with a 4 pixel rgb(194, 143, 143) colored shadow looks like.

```
.shadow{ text-shadow: 4px 4px 2px rgb(194, 143, 143) }
```

Border

The CSS property to change the border of an element to HunterLab 57.5304, 14.2106, 8.9173 is called "border". The border property can be set on classes, ids or directly on the HTML element.

This example shows the color as border, it can be applied via the CSS property "border" or "border-color".

```
.border, #border, table{ border:4px solid rgb(194, 143, 143) }
```


If only the border color should be changed use the property `border-color`.

```
.border{ border-color:rgb(194, 143, 143) }
```

If you want to add a box shadow in that color use:

Here you see how a box with a 4 pixel `rgb(194, 143, 143)` colored shadow looks like.

```
.boxshadow{ -moz-box-shadow:4px 4px 4px  
4px rgb(194, 143, 143); -webkit-box-  
shadow:4px 4px 4px 4px rgb(194, 143, 143);  
box-shadow:4px 4px 4px 4px rgb(194, 143,  
143) }
```

Background

The CSS property to change the background color of an element to HunterLab 57.5304, 14.2106, 8.9173 is called "background". The background property can be set on classes, ids or directly on the HTML element.

```
.background, #background, body{  
background: rgb(194, 143, 143) }
```

If only the background color should be changed can be used:

```
.background{ background-color: rgb(194,  
143, 143) }
```

This example shows the color as background, it is applied via the CSS property "background".

To optimize and compress your CSS code, you can use our [online CSS compressor and optimizer](#) based on csstidy. If you want to create a linear or radial gradient as background or border, check our [CSS Gradient Generator](#).

Hey! You found this booklet interesting? Support Converting Colors with the new Membership Option!

The pro membership hides all ads, plus gives you double the colors in the color bucket, and more awesome pro features!

[Learn more, Memberships starting at \\$2.50/m!](#)

**Follow me
on Twitter!**

@ConvertingColor