

Converting Colors

HunterLab(57.5710, 12.0150,
5.9696)

Have a look what the booklet for
HunterLab(57.5710, 12.0150,
5.9696) contains.

HunterLab(57.5710, 12.0150, 5.9696)	3
<i>Conversions</i>	4
<i>Details</i>	6
<i>Harmonies</i>	12
<i>Previews</i>	24
<i>Color Blindness Simulation</i>	28
<i>CSS Examples</i>	31

Color

**HunterLab(57.5710, 12.0150,
5.9696)**

Conversions

Conversions Part 1

Format	Color
Hex	BC9196
RGB	188, 145, 150
RGB Percent	74%, 57%, 59%
CMY	0.2627, 0.4314, 0.4118
CMYK	0.00, 0.23, 0.20, 0.26
HSL	353°, 24%, 65%
HSV	353°, 23%, 74%
XYZ	36.3695, 33.1442, 33.3348
YIQ	158.4270, 24.0230, 10.6710

Conversions

Conversions Part 2

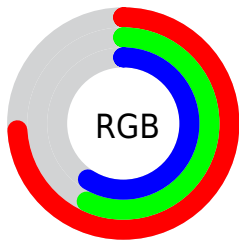
Format	Color
R_{YB}	188, 145, 150
Decimal	12358038
CIE _{Lab}	64.28, 16.97, 3.62
CIE _{LCh}	64, 17.352, 12.025
Yxy	33.1457, 0.3536, 0.3223
Android (android.graphics.Color)	4290548118 (0xFFBC9196)
YUV	158.4270, -4.1545, 25.9355
Hunter-Lab	57.5710, 12.0150, 5.9696

Details

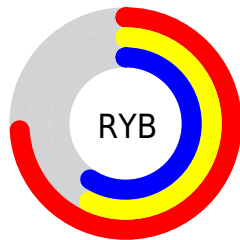
The HunterLab color $57.5710, 12.0150, 5.9696$ is a light color, and the websafe version is hex $CC9999$. A complement of this color would be $67.3839, -16.7064, 1.8086$, and the grayscale version is $58.6583, -3.1299, 3.1870$.

A 20% lighter version of the original color is $80.3859, 12.4945, 7.6174$, and $37.3826, 11.3919, 4.5123$ is the 20% darker color. If you saturate the color by 10%, you get $52.3160, 19.2896, 7.2676$, and if you desaturate by 10%, it is $63.2047, 4.9543, 4.9125$.

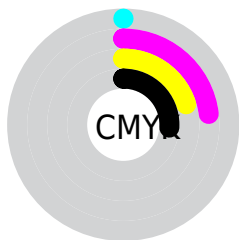
Distribution



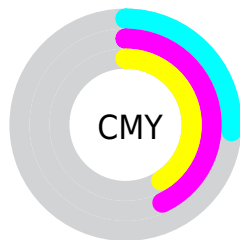
- Red (74%)
- Green (57%)
- Blue (59%)



- Red (74%)
- Yellow (57%)
- Blue (59%)



- Cyan (0%)
- Magenta (23%)
- Yellow (20%)
- Black (26%)



- Cyan (26%)
- Magenta (43%)
- Yellow (41%)

Brightness & Saturation Gradients

These gradients show how the HunterLab color 57.5710, 12.0150, 5.9696 changes by changing the brightness by 10 percent. The first figure shows a shift by +10% for each color and the second figure -10%.

Similar to the brightness gradients but the following saturation gradients show a change of the HunterLab color 57.5710, 12.0150, 5.9696 by changing the saturation by 10% instead.

■ 57.5710, 12.0150,
5.9696

■ 57.5710, 12.0150,
5.9696

177.8499, 11.9193,
13.8701

■ 47.1573, 11.6954,
5.2112

■ 80.3760, 12.4083,
7.5623

■ 37.4593, 11.2837,
4.4757

■ 92.6938, 12.5018,
8.3943

■ 28.5358, 10.7633,
3.7632

105.5835, 12.5341,
9.2500

■ 20.4610, 10.1145,
3.0710

119.0209, 12.5098,
10.1291

■ 13.3358, 9.3113,
2.3934

132.9844, 12.4330,
11.0310

■ 6.8825, 10.3824,
2.5519

147.4549, 12.3071,

0.0000, NaN, NaN

11.9555

0.0000, NaN, NaN

162.4153, 12.1350,
12.9020

0.0000, NaN, NaN

■ 57.5710, 12.0150,
5.9696

■ 57.5710, 12.0150,
5.9696

■ 52.3160, 19.2896,
7.2676

■ 63.2047, 4.9543,
4.9125

■ 47.5083, 26.7092,
8.8270

■ 69.1550, -1.8682,
4.0627

■ 43.2362, 34.0987,
10.6516

■ 75.3769, -8.4657,
3.3907

■ 39.5983, 41.1406,
12.7031

■ 81.8336, -14.8619,
2.8688

■ 36.6931, 47.3538,
14.8780

■ 88.4958, -21.0845,
2.4735

■ 34.5955, 52.1630,
16.9991

■ 94.3898, -25.7963,
1.0586

■ 33.3218, 55.1053,
18.8458

■ 94.5682, -24.7808,
-1.4762

■ 32.7853, 56.3207,
19.8294

Harmonies

Analogous

The Analogous color harmony consists of three colors that are next to each other on the color wheel.



57.5723, 11.5791, -1.3488



57.5710, 12.0150, 5.9696



57.5723, 8.2521, 11.7281

Triad

The Triadic color harmony groups three colors that are evenly spaced from another and form a triangle on the color wheel.



57.5723, 12.0129, 5.9706



57.5723, -12.5855, 12.5804



57.5723, -7.5398, -11.8104

Complementary

The Complementary color scheme is a pair of colors which are on the opposite of each other on the color wheel.



57.5710, 12.0150, 5.9696



67.3839, -16.7064, 1.8086

Split Complementary

Split-complementary colors differ from the complementary color scheme. The scheme consists of three colors, the original color and two neighbors of the complement color.



57.5723, -13.5889, -7.0312



57.5710, 12.0150, 5.9696



57.5723, -16.3958, 7.2827

Square

The Square scheme is like the rectangle color scheme, but the four colors are evenly spaced on the color wheel.



57.5723, 12.0129, 5.9706



57.5723, -6.1045, 15.1973



57.5723, -16.7532, 0.1449



57.5723, 0.0185, -12.2822

Rectangle

The Rectangle color scheme consists of four colors that form a rectangle on the color wheel.



57.5710, 12.0150, 5.9696



57.5723, 3.9811, 14.1622



57.5723, -16.7532, 0.1449



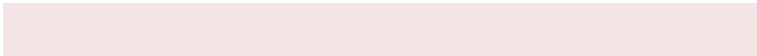
57.5723, -9.8069, -10.6281

Sweetspot

The Sweet Spot groups the original color and five complimentary colors.



57.5723, 12.0129, 5.9706



89.6507, 1.3450, 5.9234



58.2653, 16.6817, -12.2191



41.3509, 0.8782, 2.7782



97.7295, -5.2146, 5.3098



44.2712, -2.3622, 2.4053

Same Dimension

The Same Dimension uses a secret algorithm to generate beautiful new colors.



57.5723, 12.0129, 5.9706



74.2023, 20.6183, 8.7939



61.9645, 2.9880, 12.6009



30.9094, 1.1981, 2.1747



27.0632, 46.5124, 16.2015



5.4123, 9.4126, 2.3812

Inverse Universe

The Inverse Universe completely reimagines the original color for something new.



57.5723, 12.0129, 5.9706



74.2023, 20.6183, 8.7939



62.4285, -7.9857, -6.8569



30.9094, 1.1981, 2.1747



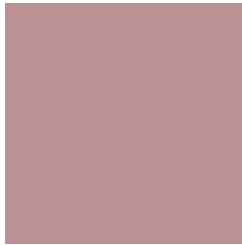
27.0632, 46.5124, 16.2015



5.4123, 9.4126, 2.3812

Previews

White Background



This preview shows how the HunterLab color 57.5710, 12.0150, 5.9696 looks on a white background.

Color Contrast Check

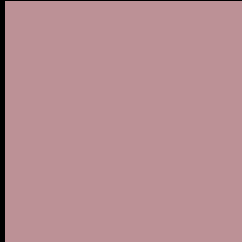
Large Text (above 18pt) WCAG AA × Fail

Any Text WCAG AA × Fail

Large Text (above 18pt) WCAG AAA × Fail

Any Text WCAG AAA × Fail

Black Background



This preview shows how the HunterLab color 57.5710, 12.0150, 5.9696 looks on a black background.

Color Contrast Check

Large Text (above 18pt) WCAG AA ✓ Pass

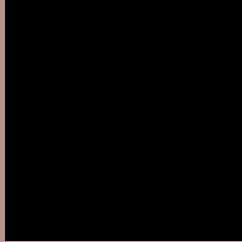
Any Text WCAG AA ✓ Pass

Large Text (above 18pt) WCAG AAA ✓ Pass

Any Text WCAG AAA ✓ Pass

If you want to check with other color combinations, try the [Color Contrast Checker](#).

HunterLab 57.5710, 12.0150, 5.9696 Background



This preview shows how black text looks on a background with the HunterLab color 57.5710, 12.0150, 5.9696.



This preview shows how white text looks on a background with the HunterLab color 57.5710, 12.0150,

Color Blindness Simulation

Color vision deficiency is a very complex topic, and I could not describe the different causes any better than Wikipedia does, so if you want to learn more, you should check out their [article about color blindness](#).

Dichromacy



Original Color

57.5710, 12.0150, 5.9696

Protanopia

57.6315, -1.6802, 3.1252

Deuteranopia

57.7077, 4.0154, 6.4161



Tritanopia

57.5603, 13.6252, 3.7647

Trichromacy



Original Color

57.5710, 12.0150, 5.9696

Protanomaly

57.4564, 3.4542, 3.9173

Deuteranomaly

57.6615, 6.7054, 6.4114

Tritanomaly

57.5024, 13.3245, 4.5921

Monochromacy



Original Color

57.5710, 12.0150, 5.9696

Achromatopsia

58.4734, -3.1200, 3.1770

Achromatomaly

57.9517, 2.2925, 4.0233

CSS Examples

Text

The CSS property to change the color of the text to HunterLab 57.5710, 12.0150, 5.9696 is called "color". The color property can be set on classes, ids or directly on the HTML element.

This example shows how text in the color `rgb(188, 145, 150)` looks like.

```
.text, #text, p{  
    color:rgb(188, 145, 150)  
}
```

If you want to add a text shadow in that color use the text-shadow property, you can generate a text shadow directly with our [CSS Text Shadow Generator](#).

Here you see how black text with a 4 pixel rgb(188, 145, 150) colored shadow looks like.

```
.shadow{ text-shadow: 4px 4px 2px rgb(188, 145, 150) }
```

Border

The CSS property to change the border of an element to HunterLab 57.5710, 12.0150, 5.9696 is called "border". The border property can be set on classes, ids or directly on the HTML element.

This example shows the color as border, it can be applied via the CSS property "border" or "border-color".

```
.border, #border, table{ border:4px solid rgb(188, 145, 150) }
```


If only the border color should be changed use the property `border-color`.

```
.border{ border-color:rgb(188, 145, 150) }
```

If you want to add a box shadow in that color use:

Here you see how a box with a 4 pixel `rgb(188, 145, 150)` colored shadow looks like.

```
.boxshadow{ -moz-box-shadow:4px 4px 4px  
4px rgb(188, 145, 150); -webkit-box-  
shadow:4px 4px 4px 4px rgb(188, 145, 150);  
box-shadow:4px 4px 4px 4px rgb(188, 145,  
150) }
```

Background

The CSS property to change the background color of an element to HunterLab 57.5710, 12.0150, 5.9696 is called "background". The background property can be set on classes, ids or directly on the HTML element.

```
.background, #background, body{  
background: rgb(188, 145, 150) }
```

If only the background color should be changed can be used:

```
.background{ background-color: rgb(188,  
145, 150) }
```

This example shows the color as background, it is applied via the CSS property "background".

To optimize and compress your CSS code, you can use our [online CSS compressor and optimizer](#) based on csstidy. If you want to create a linear or radial gradient as background or border, check our [CSS Gradient Generator](#).

Hey! You found this booklet interesting? Support Converting Colors with the new Membership Option!

The pro membership hides all ads, plus gives you double the colors in the color bucket, and more awesome pro features!

[Learn more, Memberships starting at \\$2.50/m!](#)

**Follow me
on Twitter!**

@ConvertingColor