

Converting Colors

HunterLab(57.5715, 6.6554,
17.2658)

Have a look what the booklet for
HunterLab(57.5715, 6.6554,
17.2658) contains.

HunterLab(57.6431, 6.6373, 17.3586)	3
<i>Conversions</i>	4
<i>Details</i>	6
<i>Harmonies</i>	12
<i>Previews</i>	24
<i>Color Blindness Simulation</i>	28
<i>CSS Examples</i>	31

Color

**HunterLab(57.6431, 6.6373,
17.3586)**

Conversions

Conversions Part 1

Format	Color
Hex	BC9478
RGB	188, 148, 120
RGB Percent	74%, 58%, 47%
CMY	0.2627, 0.4196, 0.5294
CMYK	0.00, 0.21, 0.36, 0.26
HSL	25°, 34%, 60%
HSV	25°, 36%, 74%
XYZ	34.7191, 33.2273, 22.3529
YIQ	156.7680, 32.8280, -0.2280

Conversions

Conversions Part 2

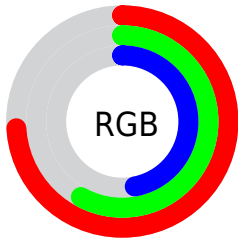
Format	Color
RYB	188, 168, 120
Decimal	12358776
CIELab	64.35, 11.11, 20.54
CIELCh	64, 23.352, 61.603
Yxy	33.2288, 0.3845, 0.3680
Android (android.graphics.Color)	4290548856 (0xFFBC9478)
YUV	156.7680, -18.1266, 27.3905
Hunter-Lab	57.6431, 6.6373, 17.3586

Details

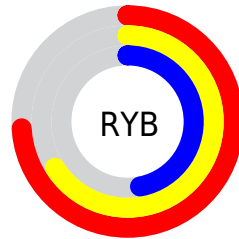
The HunterLab color **57.6431, 6.6373, 17.3586** is a light color, and the websafe version is hex **CC9966**. A complement of this color would be **57.2402, -8.5094, -14.1586**, and the grayscale version is **58.0345, -3.0966, 3.1531**.

A 20% lighter version of the original color is **80.3941, 6.3463, 20.8655**, and **37.4044, 6.5300, 13.7135** is the 20% darker color. If you saturate the color by 10%, you get **54.3242, 10.1975, 20.1590**, and if you desaturate by 10%, it is **61.1289, 3.3840, 14.1091**.

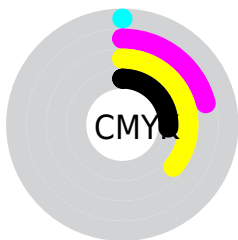
Distribution



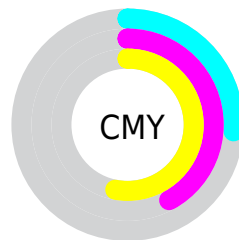
- Red (74%)
- Green (58%)
- Blue (47%)



- Red (74%)
- Yellow (66%)
- Blue (47%)



- Cyan (0%)
- Magenta (21%)
- Yellow (36%)
- Black (26%)





- Cyan (26%)
- Magenta (42%)
- Yellow (53%)

Brightness & Saturation Gradients

These gradients show how the HunterLab color 57.6431, 6.6373, 17.3586 changes by changing the brightness by 10 percent. The first figure shows a shift by +10% for each color and the second figure -10%.


Similar to the brightness gradients but the following saturation gradients show a change of the HunterLab color 57.6431, 6.6373, 17.3586 by changing the saturation by 10% instead.


 57.6431, 6.6373,
17.3586


 57.6431, 6.6373,
17.3586


177.9549, 4.4036,
32.1456


 47.2248, 6.6080,
15.5858


 80.4566, 6.4900,
20.7711

 37.5218, 6.5033,
13.7437


 92.7783, 6.3306,
22.4321

 28.5929, 6.3085,
11.8047


 105.6718, 6.1195,
24.0737

 20.5121, 6.0067,
9.7246

119.1128, 5.8607,
25.7014

 13.3801, 5.5726,
8.0675

133.0798, 5.5571,
27.3193

 6.9362, 6.6067,
4.8553

147.5536, 5.2116,

0.0000, NaN, NaN

28.9310

0.0000, NaN, NaN

162.5172, 4.8264,
30.5390

0.0000, NaN, NaN

■ 57.6431, 6.6373,
17.3586

■ 57.6431, 6.6373,
17.3586

■ 54.3242, 10.1975,
20.1590

■ 61.1289, 3.3840,
14.1091

■ 51.1861, 14.0805,
22.4476

■ 64.7618, 0.4276,
10.4632

■ 48.2495, 18.2795,
24.1636

■ 68.5289, -2.2553,
6.4705

■ 45.5352, 22.7698,
25.2507

■ 72.4179, -4.6871,
2.1734

■ 43.0639, 27.4967,
25.6715

■ 76.4180, -6.8905,
-2.3922

■ 40.8539, 32.3629,
25.4404

■ 80.5198, -8.8869,
-7.1954

■ 40.0731, 34.2050,
25.2917

■ 84.7149, -10.6965,
-12.2103

■ 88.4146, -15.5849,
-9.2353

■ 92.0620, -21.0989,
-4.5708

Harmonies

Analogous

The Analogous color harmony consists of three colors that are next to each other on the color wheel.



57.6445, 14.7574, 12.1543



57.6431, 6.6373, 17.3586



57.6445, -3.6311, 18.9582

Triad

The Triadic color harmony groups three colors that are evenly spaced from another and form a triangle on the color wheel.



57.6445, 6.6350, 17.3594



57.6445, -21.5520, 2.6089



57.6445, 7.6591, -15.3028

Complementary

The Complementary color scheme is a pair of colors which are on the opposite of each other on the color wheel.



57.6431, 6.6373, 17.3586



57.2402, -8.5094, -14.1586

Split Complementary

Split-complementary colors differ from the complementary color scheme. The scheme consists of three colors, the original color and two neighbors of the complement color.



57.6445, -2.5245, -19.0230



57.6431, 6.6373, 17.3586



57.6445, -18.9797, -7.6212

Square

The Square scheme is like the rectangle color scheme, but the four colors are evenly spaced on the color wheel.



57.6445, 6.6350, 17.3594



57.6445, -19.4703, 11.3898



57.6445, -12.1893, -15.9940



57.6445, 15.3772, -6.5495

Rectangle

The Rectangle color scheme consists of four colors that form a rectangle on the color wheel.



57.6431, 6.6373, 17.3586



57.6445, -10.1833, 18.0365



57.6445, -12.1893, -15.9940



57.6445, 4.3873, -17.2461

Sweetspot

The Sweet Spot groups the original color and five complimentary colors.



57.6445, 6.6350, 17.3594



89.6935, -1.2706, 11.4586



51.6632, 26.6167, -6.2896



41.2759, -0.3610, 5.6493



97.7295, -5.2146, 5.3098



44.2712, -2.3622, 2.4053

Same Dimension

The Same Dimension uses a secret algorithm to generate beautiful new colors.



57.6445, 6.6350, 17.3594



74.2135, 12.5060, 26.2702



67.2136, -9.5525, 25.5746



31.8816, -0.6767, 3.6835



33.2752, 27.6881, 20.9888



7.5027, 3.3336, 4.6815

Inverse Universe

The Inverse Universe completely reimagines the original color for something new.



57.2402, -8.5094, -14.1586



73.5519, -11.7906, -24.3908



47.6985, 7.7891, -29.6110



31.8319, -2.6009, -0.3089



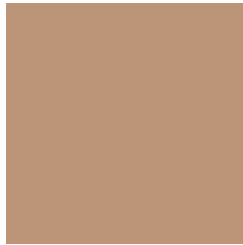
32.0922, -0.0194, -40.0707



7.2759, -1.4879, -5.8824

Previews

White Background



This preview shows how the HunterLab color 57.6431, 6.6373, 17.3586 looks on a white background.

Color Contrast Check

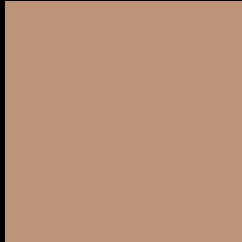
Large Text (above 18pt) WCAG AA × Fail

Any Text WCAG AA × Fail

Large Text (above 18pt) WCAG AAA × Fail

Any Text WCAG AAA × Fail

Black Background



This preview shows how the HunterLab color 57.6431, 6.6373, 17.3586 looks on a black background.

Color Contrast Check

Large Text (above 18pt) WCAG AA ✓ Pass

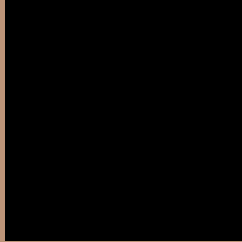
Any Text WCAG AA ✓ Pass

Large Text (above 18pt) WCAG AAA ✓ Pass

Any Text WCAG AAA ✓ Pass

If you want to check with other color combinations, try the [Color Contrast Checker](#).

HunterLab 57.6431, 6.6373, 17.3586 Background



This preview shows how black text looks on a background with the HunterLab color 57.6431, 6.6373, 17.3586.



This preview shows how white text looks on a background with the HunterLab color 57.6431, 6.6373,

Color Blindness Simulation

Color vision deficiency is a very complex topic, and I could not describe the different causes any better than Wikipedia does, so if you want to learn more, you should check out their [article about color blindness](#).

Dichromacy



Original Color

57.6431, 6.6373, 17.3586

Protanopia

57.7401, -4.4301, 15.9210

Deuteranopia

57.6507, 3.8412, 17.3168



Tritanopia

57.6060, 15.0582, 4.2946

Trichromacy



Original Color

57.6431, 6.6373, 17.3586

Protanomaly

57.6292, -0.4276, 16.2244

Deuteranomaly

57.5893, 5.0530, 17.2806

Tritanomaly

57.6890, 11.9625, 9.4557

Monochromacy



Original Color

57.6431, 6.6373, 17.3586

Achromatopsia

58.0658, -3.0982, 3.1548

Achromatomaly

57.8357, -0.1719, 8.5860

CSS Examples

Text

The CSS property to change the color of the text to HunterLab 57.6431, 6.6373, 17.3586 is called "color". The color property can be set on classes, ids or directly on the HTML element.

This example shows how text in the color `rgb(188, 148, 120)` looks like.

```
.text, #text, p{  
    color:rgb(188, 148, 120)  
}
```

If you want to add a text shadow in that color use the text-shadow property, you can generate a text shadow directly with our [CSS Text Shadow Generator](#).

Here you see how black text with a 4 pixel rgb(188, 148, 120) colored shadow looks like.

```
.shadow{ text-shadow: 4px 4px 2px rgb(188, 148, 120) }
```

Border

The CSS property to change the border of an element to HunterLab 57.6431, 6.6373, 17.3586 is called "border". The border property can be set on classes, ids or directly on the HTML element.

This example shows the color as border, it can be applied via the CSS property "border" or "border-color".

```
.border, #border, table{ border:4px solid rgb(188, 148, 120) }
```


If only the border color should be changed use the property `border-color`.

```
.border{ border-color:rgb(188, 148, 120) }
```

If you want to add a box shadow in that color use:

Here you see how a box with a 4 pixel `rgb(188, 148, 120)` colored shadow looks like.

```
.boxshadow{ -moz-box-shadow:4px 4px 4px  
4px rgb(188, 148, 120); -webkit-box-  
shadow:4px 4px 4px 4px rgb(188, 148, 120);  
box-shadow:4px 4px 4px 4px rgb(188, 148,  
120) }
```

Background

The CSS property to change the background color of an element to HunterLab 57.6431, 6.6373, 17.3586 is called "background". The background property can be set on classes, ids or directly on the HTML element.

```
.background, #background, body{  
background: rgb(188, 148, 120) }
```

If only the background color should be changed can be used:

```
.background{ background-color: rgb(188,  
148, 120) }
```

This example shows the color as background, it is applied via the CSS property "background".

To optimize and compress your CSS code, you can use our [online CSS compressor and optimizer](#) based on csstidy. If you want to create a linear or radial gradient as background or border, check our [CSS Gradient Generator](#).

Hey! You found this booklet interesting? Support Converting Colors with the new Membership Option!

The pro membership hides all ads, plus gives you double the colors in the color bucket, and more awesome pro features!

[Learn more, Memberships starting at \\$2.50/m!](#)

**Follow me
on Twitter!**

@ConvertingColor