

Converting Colors

HunterLab(57.6052, 2.3315,
14.8705)

Have a look what the booklet for
HunterLab(57.6052, 2.3315,
14.8705) contains.

HunterLab(57.5591, 2.4083, 14.8273)	3
<i>Conversions</i>	4
<i>Details</i>	6
<i>Harmonies</i>	12
<i>Previews</i>	24
<i>Color Blindness Simulation</i>	28
<i>CSS Examples</i>	31

Color

**HunterLab(57.5591, 2.4083,
14.8273)**

Conversions

Conversions Part 1

Format	Color
Hex	B2977F
RGB	178, 151, 127
RGB Percent	70%, 59%, 50%
CMY	0.3020, 0.4078, 0.5020
CMYK	0.00, 0.15, 0.29, 0.30
HSL	28°, 25%, 60%
HSV	28°, 29%, 70%
XYZ	33.2575, 33.1305, 24.7207
YIQ	156.3370, 23.7960, -1.7400

Conversions

Conversions Part 2

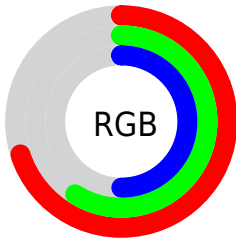
Format	Color
RYB	178, 172, 127
Decimal	11704191
CIELab	64.27, 6.35, 16.38
CIELCh	64, 17.571, 68.796
Yxy	33.1320, 0.3650, 0.3636
Android (android.graphics.Color)	4289894271 (0xFFB2977F)
YUV	156.3370, -14.4631, 18.9985
Hunter-Lab	57.5591, 2.4083, 14.8273

Details

The HunterLab color $57.5591, 2.4083, 14.8273$ is a light color, and the websafe version is hex $CC9999$. A complement of this color would be $55.5308, -6.0703, -10.8593$, and the grayscale version is $57.8470, -3.0866, 3.1429$.

A 20% lighter version of the original color is $80.2810, 1.8112, 17.6107$, and $37.4491, 3.0523, 11.7180$ is the 20% darker color. If you saturate the color by 10%, you get $54.5852, 5.0068, 17.9459$, and if you desaturate by 10%, it is $60.6573, 0.0852, 11.2724$.

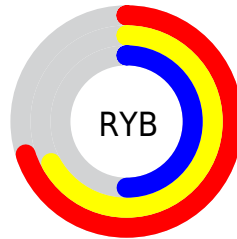
Distribution



Red (70%)

Green (59%)

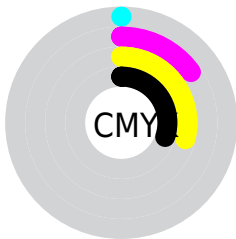
Blue (50%)



Red (70%)

Yellow (67%)

Blue (50%)

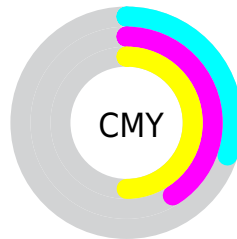


Cyan (0%)

Magenta (15%)

Yellow (29%)

Black (30%)



Cyan (30%)

Magenta (41%)

Yellow (50%)

Brightness & Saturation Gradients

These gradients show how the HunterLab color 57.5591, 2.4083, 14.8273 changes by changing the brightness by 10 percent. The first figure shows a shift by +10% for each color and the second figure -10%.

Similar to the brightness gradients but the following saturation gradients show a change of the HunterLab color 57.5591, 2.4083, 14.8273 by changing the saturation by 10% instead.

■ 57.5591, 2.4083,
14.8273

■ 57.5591, 2.4083,
14.8273

177.8326, -1.5927,
27.8456

■ 47.1462, 2.6231,
13.3181

■ 80.3627, 1.8110,
17.7688

■ 37.4489, 2.7777,
11.7644

■ 92.6798, 1.4417,
19.2162

■ 28.5263, 2.8610,
10.1456

■ 105.5690, 1.0295,
20.6558

■ 20.4526, 2.8603,
8.4275

119.0058, 0.5770,
22.0914

■ 13.3285, 2.7561,
6.7740

132.9687, 0.0866,
23.5261

■ 6.8736, 3.6616,
4.8115

147.4386, -0.4396,

0.0000, NaN, NaN

24.9622

0.0000, NaN, NaN

162.3985, -0.9999,
26.4015

0.0000, NaN, NaN

■ 57.5591, 2.4083,
14.8273

■ 57.5591, 2.4083,
14.8273

■ 54.5852, 5.0068,
17.9459

■ 60.6573, 0.0852,
11.2724

■ 51.7429, 7.9017,
20.5766

■ 63.8654, -1.9744,
7.3247

■ 49.0459, 11.1000,
22.6693

■ 67.1757, -3.7920,
3.0263

■ 46.5074, 14.6009,
24.1760

■ 70.5797, -5.3870,
-1.5860

■ 44.1408, 18.3895,
25.0581

■ 74.0702, -6.7783,
-6.4800

■ 41.9591, 22.4297,
25.2992

■ 77.6407, -7.9837,
-11.6274

■ 39.9687, 26.6348,
24.9925

■ 81.2854, -9.0196,
-17.0039

■ 39.7130, 27.1989,
24.9471

■ 84.4310, -13.0603,
-14.6391

■ 87.5005, -17.7741,
-10.4996

Harmonies

Analogous

The Analogous color harmony consists of three colors that are next to each other on the color wheel.



57.5604, 8.9865, 11.3143



57.5591, 2.4083, 14.8273



57.5604, -5.3320, 15.4385

Triad

The Triadic color harmony groups three colors that are evenly spaced from another and form a triangle on the color wheel.



57.5604, 2.4063, 14.8281



57.5604, -17.0521, 0.9265



57.5604, 6.5475, -9.0251

Complementary

The Complementary color scheme is a pair of colors which are on the opposite of each other on the color wheel.



57.5591, 2.4083, 14.8273



55.5308, -6.0703, -10.8593

Split Complementary

Split-complementary colors differ from the complementary color scheme. The scheme consists of three colors, the original color and two neighbors of the complement color.



57.5604, -0.7814, -12.6820



57.5591, 2.4083, 14.8273



57.5604, -14.2173, -6.4588

Square

The Square scheme is like the rectangle color scheme, but the four colors are evenly spaced on the color wheel.



57.5604, 2.4063, 14.8281



57.5604, -16.2991, 8.0207



57.5604, -8.3573, -11.6855



57.5604, 11.4638, -2.2245

Rectangle

The Rectangle color scheme consists of four colors that form a rectangle on the color wheel.



57.5591, 2.4083, 14.8273



57.5604, -10.0674, 14.2075



57.5604, -8.3573, -11.6855



57.5604, 4.2693, -10.7011

Sweetspot

The Sweet Spot groups the original color and five complimentary colors.



57.5604, 2.4063, 14.8281



85.7822, -2.5268, 10.1438



51.9460, 18.3646, -2.6637



40.0797, -1.0095, 5.1485



95.4677, -5.0939, 5.1869



42.2927, -2.2566, 2.2978

Same Dimension

The Same Dimension uses a secret algorithm to generate beautiful new colors.



57.5604, 2.4063, 14.8281



75.1135, 5.2729, 22.5363



64.9352, -9.7966, 21.5078



30.2371, -0.8760, 3.6112



33.7765, 22.5667, 21.2080



6.8998, 2.0204, 4.2870

Inverse Universe

The Inverse Universe completely reimagines the original color for something new.



55.5308, -6.0703, -10.8593



71.8393, -8.3543, -18.9176



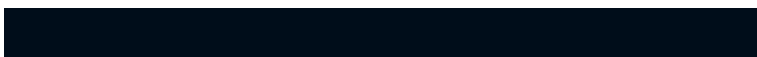
48.3202, 6.3127, -21.7964



29.9164, -2.2229, -0.4448



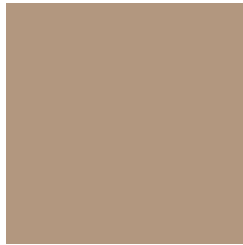
28.6061, 4.1728, -44.7630



6.1083, -1.0085, -5.4578

Previews

White Background



This preview shows how the HunterLab color 57.5591, 2.4083, 14.8273 looks on a white background.

Color Contrast Check

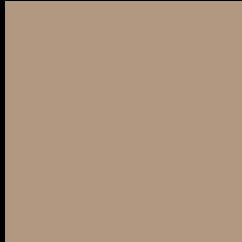
Large Text (above 18pt) WCAG AA × Fail

Any Text WCAG AA × Fail

Large Text (above 18pt) WCAG AAA × Fail

Any Text WCAG AAA × Fail

Black Background



This preview shows how the HunterLab color 57.5591, 2.4083, 14.8273 looks on a black background.

Color Contrast Check

Large Text (above 18pt) WCAG AA ✓ Pass

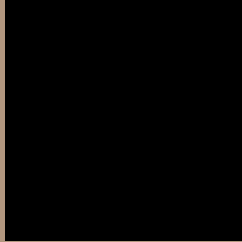
Any Text WCAG AA ✓ Pass

Large Text (above 18pt) WCAG AAA ✓ Pass

Any Text WCAG AAA ✓ Pass

If you want to check with other color combinations, try the [Color Contrast Checker](#).

HunterLab 57.5591, 2.4083, 14.8273 Background



This preview shows how black text looks on a background with the HunterLab color 57.5591, 2.4083, 14.8273.



This preview shows how white text looks on a background with the HunterLab color 57.5591, 2.4083,

Color Blindness Simulation

Color vision deficiency is a very complex topic, and I could not describe the different causes any better than Wikipedia does, so if you want to learn more, you should check out their [article about color blindness](#).

Dichromacy



Original Color

57.5591, 2.4083, 14.8273

Protanopia

57.7592, -4.1385, 14.1992

Deuteranopia

57.5923, 3.9510, 14.8867



Tritanopia

57.6898, 10.1120, 2.4802

Trichromacy



Original Color

57.5591, 2.4083, 14.8273

Protanomaly

57.6331, -1.6571, 14.4751

Deuteranomaly

57.4876, 3.5994, 14.7785

Tritanomaly

57.5414, 7.6048, 7.1473

Monochromacy



Original Color

57.5591, 2.4083, 14.8273

Achromatopsia

57.6586, -3.0765, 3.1327

Achromatomaly

57.4874, -1.3158, 7.7724

CSS Examples

Text

The CSS property to change the color of the text to HunterLab 57.5591, 2.4083, 14.8273 is called "color". The color property can be set on classes, ids or directly on the HTML element.

This example shows how text in the color `rgb(178, 151, 127)` looks like.

```
.text, #text, p{  
    color:rgb(178, 151, 127)  
}
```

If you want to add a text shadow in that color use the text-shadow property, you can generate a text shadow directly with our [CSS Text Shadow Generator](#).

Here you see how black text with a 4 pixel rgb(178, 151, 127) colored shadow looks like.

```
.shadow{ text-shadow: 4px 4px 2px rgb(178, 151, 127) }
```

Border

The CSS property to change the border of an element to HunterLab 57.5591, 2.4083, 14.8273 is called "border". The border property can be set on classes, ids or directly on the HTML element.

This example shows the color as border, it can be applied via the CSS property "border" or "border-color".

```
.border, #border, table{ border:4px solid rgb(178, 151, 127) }
```


If only the border color should be changed use the property `border-color`.

```
.border{ border-color:rgb(178, 151, 127) }
```

If you want to add a box shadow in that color use:

Here you see how a box with a 4 pixel `rgb(178, 151, 127)` colored shadow looks like.

```
.boxshadow{ -moz-box-shadow:4px 4px 4px  
4px rgb(178, 151, 127); -webkit-box-  
shadow:4px 4px 4px 4px rgb(178, 151, 127);  
box-shadow:4px 4px 4px 4px rgb(178, 151,  
127) }
```

Background

The CSS property to change the background color of an element to HunterLab 57.5591, 2.4083, 14.8273 is called "background". The background property can be set on classes, ids or directly on the HTML element.

```
.background, #background, body{  
background: rgb(178, 151, 127) }
```

If only the background color should be changed can be used:

```
.background{ background-color: rgb(178,  
151, 127) }
```

This example shows the color as background, it is applied via the CSS property "background".

To optimize and compress your CSS code, you can use our [online CSS compressor and optimizer](#) based on csstidy. If you want to create a linear or radial gradient as background or border, check our [CSS Gradient Generator](#).

Hey! You found this booklet interesting? Support Converting Colors with the new Membership Option!

The pro membership hides all ads, plus gives you double the colors in the color bucket, and more awesome pro features!

[Learn more, Memberships starting at \\$2.50/m!](#)

**Follow me
on Twitter!**

@ConvertingColor