

Converting Colors

HunterLab(57.6112, 11.0024,
8.2253)

Have a look what the booklet for
HunterLab(57.6112, 11.0024,
8.2253) contains.

HunterLab(57.7005, 10.7907, 8.2177)	3
<i>Conversions</i>	4
<i>Details</i>	6
<i>Harmonies</i>	12
<i>Previews</i>	24
<i>Color Blindness Simulation</i>	28
<i>CSS Examples</i>	31

Color

**HunterLab(57.7005, 10.7907,
8.2177)**

Conversions

Conversions Part 1

Format	Color
Hex	BC9291
RGB	188, 146, 145
RGB Percent	74%, 57%, 57%
CMY	0.2627, 0.4274, 0.4314
CMYK	0.00, 0.22, 0.23, 0.26
HSL	1°, 24%, 65%
HSV	1°, 23%, 74%
XYZ	36.1288, 33.2935, 31.3101
YIQ	158.4440, 25.3530, 8.5930

Conversions

Conversions Part 2

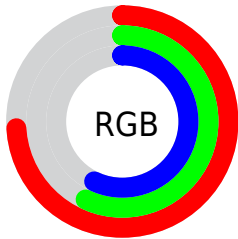
Format	Color
RYB	188, 146, 145
Decimal	12358289
CIELab	64.40, 15.65, 6.61
CIELCh	64, 16.988, 22.894
Yxy	33.2950, 0.3587, 0.3305
Android (android.graphics.Color)	4290548369 (0xFFBC9291)
YUV	158.4440, -6.6279, 25.9206
Hunter-Lab	57.7005, 10.7907, 8.2177

Details

The HunterLab color **57.7005, 10.7907, 8.2177** is a light color, and the websafe version is hex **CC9999**. A complement of this color would be **67.2235, -15.3475, -0.8082**, and the grayscale version is **58.6746, -3.1307, 3.1879**.

A 20% lighter version of the original color is **80.5261, 11.1857, 10.0322**, and **37.5220, 10.4010, 6.1956** is the 20% darker color. If you saturate the color by 10%, you get **52.4866, 17.6249, 10.2765**, and if you desaturate by 10%, it is **63.2824, 4.2357, 6.2505**.

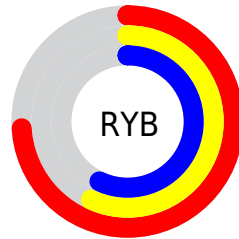
Distribution



Red (74%)

Green (57%)

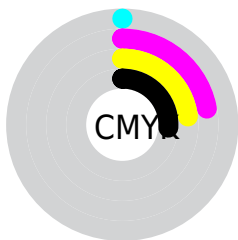
Blue (57%)



Red (74%)

Yellow (57%)

Blue (57%)

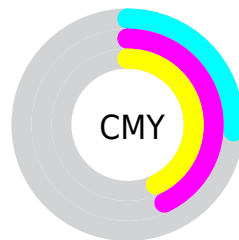


Cyan (0%)

Magenta (22%)

Yellow (23%)

Black (26%)



Cyan (26%)

Magenta (43%)

Yellow (43%)

Brightness & Saturation Gradients

These gradients show how the HunterLab color 57.7005, 10.7907, 8.2177 changes by changing the brightness by 10 percent. The first figure shows a shift by +10% for each color and the second figure -10%.

Similar to the brightness gradients but the following saturation gradients show a change of the HunterLab color 57.7005, 10.7907, 8.2177 by changing the saturation by 10% instead.

■ 57.7005, 10.7907,
8.2177

■ 57.7005, 10.7907,
8.2177

178.0385, 10.2131,
17.2742

■ 47.2785, 10.5363,
7.2924

■ 80.5207, 11.0624,
10.1122

■ 37.5715, 10.1934,
6.3761

■ 92.8456, 11.0990,
11.0827

■ 28.6383, 9.7456,
5.4644

105.7420, 11.0764,
12.0702

■ 20.5528, 9.1738,
4.5484

119.1859, 10.9992,
13.0752

■ 13.4154, 8.4514,
3.6106

133.1556, 10.8712,
14.0980

■ 6.9786, 9.3990,
4.3053

147.6321, 10.6957,

0.0000, NaN, NaN

15.1388

0.0000, NaN, NaN

162.5982, 10.4755,
16.1975

0.0000, NaN, NaN

■ 57.7005, 10.7907,
8.2177

■ 57.7005, 10.7907,
8.2177

■ 52.4866, 17.6249,
10.2765

■ 63.2824, 4.2357,
6.2505

■ 47.7064, 24.6955,
12.4036

■ 69.1724, -2.0331,
4.3751

■ 43.4450, 31.8640,
14.5499

■ 75.3272, -8.0403,
2.5867

■ 39.7977, 38.8601,
16.6201

■ 81.7113, -13.8174,
0.8761

■ 36.8610, 45.2498,
18.4679

■ 88.2964, -19.3972,
-0.7671

■ 34.7113, 50.4785,
19.9140

■ 94.5682, -24.7808,
-1.4761

■ 33.3727, 54.0397,
20.8093

■ 32.8431, 55.4994,
21.2094

Harmonies

Analogous

The Analogous color harmony consists of three colors that are next to each other on the color wheel.



57.7018, 11.9104, 1.4209



57.7005, 10.7907, 8.2177



57.7018, 5.8629, 13.0303

Triad

The Triadic color harmony groups three colors that are evenly spaced from another and form a triangle on the color wheel.



57.7018, 10.7886, 8.2187



57.7018, -14.1205, 10.8072



57.7018, -4.8521, -12.1687

Complementary

The Complementary color scheme is a pair of colors which are on the opposite of each other on the color wheel.



57.7005, 10.7907, 8.2177



67.2235, -15.3475, -0.8082

Split Complementary

Split-complementary colors differ from the complementary color scheme. The scheme consists of three colors, the original color and two neighbors of the complement color.



57.7018, -11.5130, -8.8835



57.7005, 10.7907, 8.2177



57.7018, -16.6843, 4.8095

Square

The Square scheme is like the rectangle color scheme, but the four colors are evenly spaced on the color wheel.



57.7018, 10.7886, 8.2187



57.7018, -8.5765, 14.3865



57.7018, -15.7546, -2.4449



57.7018, 2.6262, -10.9534

Rectangle

The Rectangle color scheme consists of four colors that form a rectangle on the color wheel.



57.7005, 10.7907, 8.2177



57.7018, 1.2141, 14.7569



57.7018, -15.7546, -2.4449



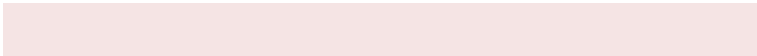
57.7018, -7.2558, -11.5414

Sweetspot

The Sweet Spot groups the original color and five complimentary colors.



57.7018, 10.7886, 8.2187



89.7114, 0.7982, 6.9461



58.7729, 18.2212, -11.0536



41.3813, 0.6038, 3.2910



97.7295, -5.2146, 5.3098



44.2712, -2.3622, 2.4053

Same Dimension

The Same Dimension uses a secret algorithm to generate beautiful new colors.



57.7018, 10.7886, 8.2187



74.4053, 18.6845, 12.3162



63.6027, 0.1372, 14.2220



30.9371, 0.9471, 2.6431



27.1281, 45.6988, 17.5163



5.4830, 8.6632, 3.5303

Inverse Universe

The Inverse Universe completely reimagines the original color for something new.



67.2235, -15.3475, -0.8082



89.6572, -23.3084, -2.1828



60.6998, -5.2076, -9.1604



32.8181, -4.1887, 0.8684



50.7137, -26.0848, -7.0780



10.0976, -5.2351, -1.3199

Previews

White Background



This preview shows how the HunterLab color 57.7005, 10.7907, 8.2177 looks on a white background.

Color Contrast Check

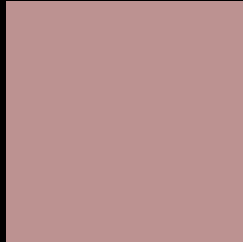
Large Text (above 18pt) WCAG AA × Fail

Any Text WCAG AA × Fail

Large Text (above 18pt) WCAG AAA × Fail

Any Text WCAG AAA × Fail

Black Background



This preview shows how the HunterLab color 57.7005, 10.7907, 8.2177 looks on a black background.

Color Contrast Check

Large Text (above 18pt) WCAG AA ✓ Pass

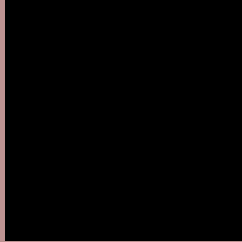
Any Text WCAG AA ✓ Pass

Large Text (above 18pt) WCAG AAA ✓ Pass

Any Text WCAG AAA ✓ Pass

If you want to check with other color combinations, try the [Color Contrast Checker](#).

HunterLab 57.7005, 10.7907, 8.2177 Background



This preview shows how black text looks on a background with the HunterLab color 57.7005, 10.7907, 8.2177.



This preview shows how white text looks on a background with the HunterLab color 57.7005, 10.7907,

Color Blindness Simulation

Color vision deficiency is a very complex topic, and I could not describe the different causes any better than Wikipedia does, so if you want to learn more, you should check out their [article about color blindness](#).

Dichromacy



Original Color

57.7005, 10.7907, 8.2177

Protanopia

57.9275, -2.4855, 6.1184

Deuteranopia

57.7728, 3.9630, 8.5902



Tritanopia

57.5896, 13.7772, 3.3465

Trichromacy



Original Color

57.7005, 10.7907, 8.2177

Protanomaly

57.6650, 2.3761, 6.7680

Deuteranomaly

57.6297, 6.3288, 8.4762

Tritanomaly

57.7379, 12.6637, 5.2952

Monochromacy



Original Color

57.7005, 10.7907, 8.2177

Achromatopsia

58.4734, -3.1200, 3.1770

Achromatomaly

58.1774, 1.4883, 5.1614

CSS Examples

Text

The CSS property to change the color of the text to HunterLab 57.7005, 10.7907, 8.2177 is called "color". The color property can be set on classes, ids or directly on the HTML element.

This example shows how text in the color `rgb(188, 146, 145)` looks like.

```
.text, #text, p{  
    color:rgb(188, 146, 145)  
}
```

If you want to add a text shadow in that color use the text-shadow property, you can generate a text shadow directly with our [CSS Text Shadow Generator](#).

Here you see how black text with a 4 pixel rgb(188, 146, 145) colored shadow looks like.

```
.shadow{ text-shadow: 4px 4px 2px rgb(188, 146, 145) }
```

Border

The CSS property to change the border of an element to HunterLab 57.7005, 10.7907, 8.2177 is called "border". The border property can be set on classes, ids or directly on the HTML element.

This example shows the color as border, it can be applied via the CSS property "border" or "border-color".

```
.border, #border, table{ border:4px solid rgb(188, 146, 145) }
```


If only the border color should be changed use the property `border-color`.

```
.border{ border-color:rgb(188, 146, 145) }
```

If you want to add a box shadow in that color use:

Here you see how a box with a 4 pixel `rgb(188, 146, 145)` colored shadow looks like.

```
.boxshadow{ -moz-box-shadow:4px 4px 4px  
4px rgb(188, 146, 145); -webkit-box-  
shadow:4px 4px 4px 4px rgb(188, 146, 145);  
box-shadow:4px 4px 4px 4px rgb(188, 146,  
145) }
```

Background

The CSS property to change the background color of an element to HunterLab 57.7005, 10.7907, 8.2177 is called "background". The background property can be set on classes, ids or directly on the HTML element.

```
.background, #background, body{  
background: rgb(188, 146, 145) }
```

If only the background color should be changed can be used:

```
.background{ background-color: rgb(188,  
146, 145) }
```

This example shows the color as background, it is applied via the CSS property "background".

To optimize and compress your CSS code, you can use our [online CSS compressor and optimizer](#) based on csstidy. If you want to create a linear or radial gradient as background or border, check our [CSS Gradient Generator](#).

Hey! You found this booklet interesting? Support Converting Colors with the new Membership Option!

The pro membership hides all ads, plus gives you double the colors in the color bucket, and more awesome pro features!

[Learn more, Memberships starting at \\$2.50/m!](#)

**Follow me
on Twitter!**

@ConvertingColor