

Converting Colors

HunterLab(57.6314, 2.2766,
21.8851)

Have a look what the booklet for
HunterLab(57.6314, 2.2766,
21.8851) contains.

HunterLab(57.7438, 2.1450, 21.8966)	3
<i>Conversions</i>	4
<i>Details</i>	6
<i>Harmonies</i>	12
<i>Previews</i>	24
<i>Color Blindness Simulation</i>	28
<i>CSS Examples</i>	31

Color

**HunterLab(57.7438, 2.1450,
21.8966)**

Conversions

Conversions Part 1

Format	Color
Hex	B89769
RGB	184, 151, 105
RGB Percent	72%, 59%, 41%
CMY	0.2784, 0.4078, 0.5882
CMYK	0.00, 0.18, 0.43, 0.28
HSL	35°, 36%, 57%
HSV	35°, 43%, 72%
XYZ	33.3836, 33.3435, 18.0410
YIQ	155.6230, 34.4340, -7.3100

Conversions

Conversions Part 2

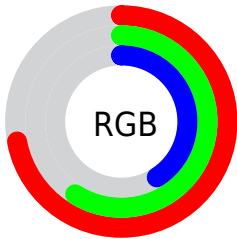
Format	Color
R_{YB}	162, 184, 105
Decimal	12097385
CIE _{Lab}	64.44, 6.06, 28.84
CIE _{LCh}	64, 29.468, 78.133
Yxy	33.3450, 0.3938, 0.3934
Android (android.graphics.Color)	4290287465 (0xFFB89769)
YUV	155.6230, -24.9571, 24.8866
Hunter-Lab	57.7438, 2.1450, 21.8966

Details

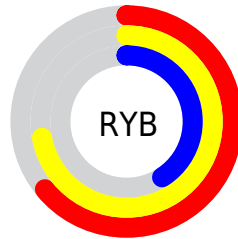
The HunterLab color $57.7438, 2.1450, 21.8966$ is a dark color, and the websafe version is hex $CC9966$. A complement of this color would be $49.6387, -2.1263, -23.6144$, and the grayscale version is $57.5947, -3.0731, 3.1292$.

A 20% lighter version of the original color is $80.4970, 1.4759, 26.1331$, and $37.5192, 2.6076, 17.0478$ is the 20% darker color. If you saturate the color by 10%, you get $55.3290, 4.2875, 24.5975$, and if you desaturate by 10%, it is $60.2662, 0.3089, 18.5760$.

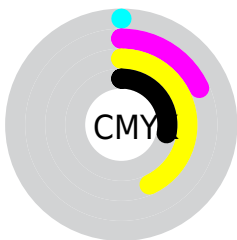
Distribution



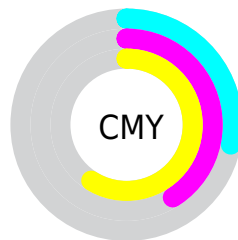
- Red (72%)
- Green (59%)
- Blue (41%)



- Red (64%)
- Yellow (72%)
- Blue (41%)



- Cyan (0%)
- Magenta (18%)
- Yellow (43%)
- Black (28%)



- Cyan (28%)
- Magenta (41%)
- Yellow (59%)

Brightness & Saturation Gradients

These gradients show how the HunterLab color 57.7438, 2.1450, 21.8966 changes by changing the brightness by 10 percent. The first figure shows a shift by +10% for each color and the second figure -10%.

Similar to the brightness gradients but the following saturation gradients show a change of the HunterLab color 57.7438, 2.1450, 21.8966 by changing the saturation by 10% instead.

■ 57.7438, 2.1450,
21.8966

■ 57.7438, 2.1450,
21.8966

178.1016, -1.9737,
40.3310

■ 47.3190, 2.3760,
19.5784

■ 80.5691, 1.5173,
26.2834

■ 37.6091, 2.5482,
17.1406

■ 92.8963, 1.1341,
28.3860

■ 28.6726, 2.6505,
14.5436

■ 105.7951, 0.7084,
30.4446

■ 20.5835, 2.6708,
11.7303

■ 119.2411, 0.2431,
32.4681

■ 13.4420, 2.5901,
9.4094

133.2128, -0.2596,
34.4634

■ 7.0104, 3.3921,
4.9073

147.6913, -0.7978,

0.0000, NaN, NaN

36.4361

0.0000, NaN, NaN

162.6594, -1.3696,
38.3908

0.0000, NaN, NaN

■ 57.7438, 2.1450,
21.8966

■ 57.7438, 2.1450,
21.8966

■ 55.3290, 4.2875,
24.5975

■ 60.2662, 0.3089,
18.5760

■ 53.0243, 6.7498,
26.6403

■ 62.8859, -1.2254,
14.6743

■ 50.8371, 9.5289,
27.9992

■ 65.5978, -2.4747,
10.2346

■ 48.7730, 12.6136,
28.6647

■ 68.3963, -3.4550,
5.2983

■ 46.8359, 15.9773,
28.6577

■ 71.2756, -4.1834,
-0.0948

■ 45.5377, 18.4630,
28.3834

■ 74.2308, -4.6765,
-5.9074

■ 77.2571, -4.9509,
-12.1052

■ 80.3501, -5.0223,
-18.6568

■ 82.8772, -8.3661,
-16.7599

Harmonies

Analogous

The Analogous color harmony consists of three colors that are next to each other on the color wheel.



57.7452, 14.5505, 18.1865



57.7438, 2.1450, 21.8966



57.7452, -10.6546, 21.4723

Triad

The Triadic color harmony groups three colors that are evenly spaced from another and form a triangle on the color wheel.



57.7452, 2.1427, 21.8973



57.7452, -24.9572, -4.7520



57.7452, 16.7200, -15.0708

Complementary

The Complementary color scheme is a pair of colors which are on the opposite of each other on the color wheel.



57.7438, 2.1450, 21.8966



49.6387, -2.1263, -23.6144

Split Complementary

Split-complementary colors differ from the complementary color scheme. The scheme consists of three colors, the original color and two neighbors of the complement color.



57.7452, 4.8974, -24.3055



57.7438, 2.1450, 21.8966



57.7452, -18.8277, -17.5000

Square

The Square scheme is like the rectangle color scheme, but the four colors are evenly spaced on the color wheel.



57.7452, 2.1427, 21.8973



57.7452, -25.5528, 7.8192



57.7452, -8.1317, -25.2815



57.7452, 23.4508, -1.9598

Rectangle

The Rectangle color scheme consists of four colors that form a rectangle on the color wheel.



57.7438, 2.1450, 21.8966



57.7452, -17.7134, 18.8842



57.7452, -8.1317, -25.2815



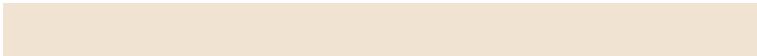
57.7452, 13.1639, -18.8453

Sweetspot

The Sweet Spot groups the original color and five complimentary colors.



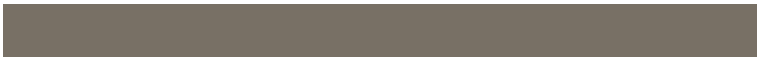
57.7452, 2.1427, 21.8973



88.2154, -3.2893, 13.9587



47.0794, 29.4449, -1.3488



40.5818, -1.3693, 7.1167



96.5975, -5.1542, 5.2483



43.2801, -2.3093, 2.3515

Same Dimension

The Same Dimension uses a secret algorithm to generate beautiful new colors.



57.7452, 2.1427, 21.8973



74.5150, 5.7528, 33.0974



66.9723, -15.3366, 29.1676



31.3967, -1.3472, 4.0137



37.9921, 14.9307, 23.6719



7.9256, 1.2322, 4.9053

Inverse Universe

The Inverse Universe completely reimagines the original color for something new.



49.6387, -2.1263, -23.6144



61.3204, -0.7670, -41.7107



41.1051, 15.6427, -39.8063



30.5276, -1.8450, -0.7974



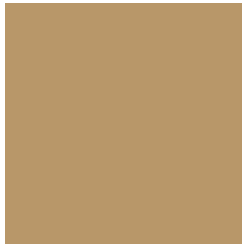
24.8234, 13.0151, -59.1230



5.8325, 0.1451, -7.6033

Previews

White Background



This preview shows how the HunterLab color 57.7438, 2.1450, 21.8966 looks on a white background.

Color Contrast Check

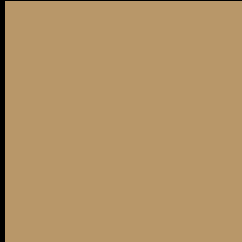
Large Text (above 18pt) WCAG AA × Fail

Any Text WCAG AA × Fail

Large Text (above 18pt) WCAG AAA × Fail

Any Text WCAG AAA × Fail

Black Background



This preview shows how the HunterLab color 57.7438, 2.1450, 21.8966 looks on a black background.

Color Contrast Check

Large Text (above 18pt) WCAG AA ✓ Pass

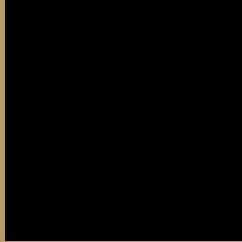
Any Text WCAG AA ✓ Pass

Large Text (above 18pt) WCAG AAA ✓ Pass

Any Text WCAG AAA ✓ Pass

If you want to check with other color combinations, try the [Color Contrast Checker](#).

HunterLab 57.7438, 2.1450, 21.8966 Background



This preview shows how black text looks on a background with the HunterLab color 57.7438, 2.1450, 21.8966.



This preview shows how white text looks on a background with the HunterLab color 57.7438, 2.1450,

Color Blindness Simulation

Color vision deficiency is a very complex topic, and I could not describe the different causes any better than Wikipedia does, so if you want to learn more, you should check out their [article about color blindness](#).

Dichromacy



Original Color

57.7438, 2.1450, 21.8966

Protanopia

57.6832, -5.3119, 21.1537

Deuteranopia

57.7905, 3.7284, 21.9641



Tritanopia

57.8532, 13.2634, 3.6474

Trichromacy



Original Color

57.7438, 2.1450, 21.8966

Protanomaly

57.5765, -2.7524, 21.3887

Deuteranomaly

57.6816, 3.3623, 21.8648

Tritanomaly

57.6527, 8.8424, 11.3411

Monochromacy



Original Color

57.7438, 2.1450, 21.8966

Achromatopsia

57.6586, -3.0765, 3.1327

Achromatomaly

57.4668, -1.8014, 10.9615

CSS Examples

Text

The CSS property to change the color of the text to HunterLab 57.7438, 2.1450, 21.8966 is called "color". The color property can be set on classes, ids or directly on the HTML element.

This example shows how text in the color `rgb(184, 151, 105)` looks like.

```
.text, #text, p{  
    color:rgb(184, 151, 105)  
}
```

If you want to add a text shadow in that color use the text-shadow property, you can generate a text shadow directly with our [CSS Text Shadow Generator](#).

Here you see how black text with a 4 pixel rgb(184, 151, 105) colored shadow looks like.

```
.shadow{ text-shadow: 4px 4px 2px rgb(184, 151, 105) }
```

Border

The CSS property to change the border of an element to HunterLab 57.7438, 2.1450, 21.8966 is called "border". The border property can be set on classes, ids or directly on the HTML element.

This example shows the color as border, it can be applied via the CSS property "border" or "border-color".

```
.border, #border, table{ border:4px solid rgb(184, 151, 105) }
```


If only the border color should be changed use the property `border-color`.

```
.border{ border-color:rgb(184, 151, 105) }
```

If you want to add a box shadow in that color use:

Here you see how a box with a 4 pixel `rgb(184, 151, 105)` colored shadow looks like.

```
.boxshadow{ -moz-box-shadow:4px 4px 4px  
4px rgb(184, 151, 105); -webkit-box-  
shadow:4px 4px 4px 4px rgb(184, 151, 105);  
box-shadow:4px 4px 4px 4px rgb(184, 151,  
105) }
```

Background

The CSS property to change the background color of an element to HunterLab 57.7438, 2.1450, 21.8966 is called "background". The background property can be set on classes, ids or directly on the HTML element.

```
.background, #background, body{  
background: rgb(184, 151, 105) }
```

If only the background color should be changed can be used:

```
.background{ background-color: rgb(184,  
151, 105) }
```

This example shows the color as background, it is applied via the CSS property "background".

To optimize and compress your CSS code, you can use our [online CSS compressor and optimizer](#) based on csstidy. If you want to create a linear or radial gradient as background or border, check our [CSS Gradient Generator](#).

Hey! You found this booklet interesting? Support Converting Colors with the new Membership Option!

The pro membership hides all ads, plus gives you double the colors in the color bucket, and more awesome pro features!

[Learn more, Memberships starting at \\$2.50/m!](#)

**Follow me
on Twitter!**

@ConvertingColor