

Converting Colors

HunterLab(57.6598, 1.4465,
13.6089)

Have a look what the booklet for
HunterLab(57.6598, 1.4465,
13.6089) contains.

HunterLab(57.6274, 1.3821, 13.4417)	3
<i>Conversions</i>	4
<i>Details</i>	6
<i>Harmonies</i>	12
<i>Previews</i>	24
<i>Color Blindness Simulation</i>	28
<i>CSS Examples</i>	31

Color

**HunterLab(57.6274, 1.3821,
13.4417)**

Conversions

Conversions Part 1

Format	Color
Hex	AF9883
RGB	175, 152, 131
RGB Percent	69%, 60%, 51%
CMY	0.3137, 0.4039, 0.4863
CMYK	0.00, 0.13, 0.25, 0.31
HSL	29°, 22%, 60%
HSV	29°, 25%, 69%
XYZ	33.0042, 33.2092, 26.1432
YIQ	156.4830, 20.4490, -1.6550

Conversions

Conversions Part 2

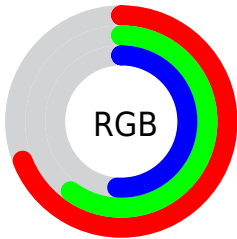
Format	Color
RYB	175, 171, 131
Decimal	11507843
CIELab	64.33, 5.18, 14.19
CIELCh	64, 15.111, 69.933
Yxy	33.2107, 0.3574, 0.3596
Android (android.graphics.Color)	4289697923 (0xFFAF9883)
YUV	156.4830, -12.5631, 16.2394
Hunter-Lab	57.6274, 1.3821, 13.4417

Details

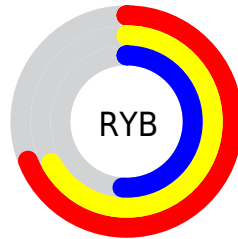
The HunterLab color $57.6274, 1.3821, 13.4417$ is a light color, and the websafe version is hex 999999 . A complement of this color would be $55.7053, -5.6687, -8.9415$, and the grayscale version is $57.9000, -3.0894, 3.1458$.

A 20% lighter version of the original color is $80.3693, 0.7825, 16.0832$, and $37.4888, 2.0196, 10.5110$ is the 20% darker color. If you saturate the color by 10%, you get $54.6992, 3.7728, 16.6766$, and if you desaturate by 10%, it is $60.6717, -0.7448, 9.7899$.

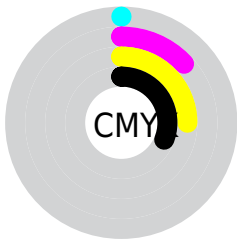
Distribution



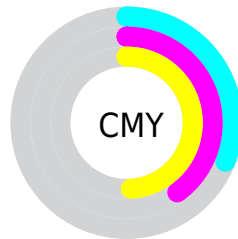
- Red (69%)
- Green (60%)
- Blue (51%)



- Red (69%)
- Yellow (67%)
- Blue (51%)



- Cyan (0%)
- Magenta (13%)
- Yellow (25%)
- Black (31%)



- Cyan (31%)
- Magenta (40%)
- Yellow (49%)

Brightness & Saturation Gradients

These gradients show how the HunterLab color 57.6274, 1.3821, 13.4417 changes by changing the brightness by 10 percent. The first figure shows a shift by +10% for each color and the second figure -10%.

Similar to the brightness gradients but the following saturation gradients show a change of the HunterLab color 57.6274, 1.3821, 13.4417 by changing the saturation by 10% instead.

■ 57.6274, 1.3821,
13.4417

■ 57.6274, 1.3821,
13.4417

177.9320, -3.0627,
25.5483

■ 47.2101, 1.6588,
12.0681

■ 80.4390, 0.6713,
16.1409

■ 37.5081, 1.8793,
10.6628

■ 92.7599, 0.2492,
17.4783

■ 28.5804, 2.0338,
9.2091

■ 105.6526, -0.2136,
18.8138

■ 20.5009, 2.1108,
7.6786

119.0927, -0.7147,
20.1504

■ 13.3705, 2.0931,
6.0993

133.0590, -1.2518,
21.4906

■ 6.9245, 2.8929,
4.8471

147.5321, -1.8233,

0.0000, NaN, NaN

22.8361

0.0000, NaN, NaN

162.4949, -2.4274,
24.1883

0.0000, NaN, NaN

■ 57.6274, 1.3821,
13.4417

■ 57.6274, 1.3821,
13.4417

■ 54.6992, 3.7728,
16.6766

■ 60.6717, -0.7448,
9.7899

■ 51.8934, 6.4488,
19.4454

■ 63.8187, -2.6202,
5.7619

■ 49.2227, 9.4196,
21.6999

■ 67.0612, -4.2649,
1.3976

■ 46.6993, 12.6887,
23.3927

■ 70.3918, -5.6978,
-3.2687

■ 44.3357, 16.2480,
24.4827

■ 73.8037, -6.9367,
-8.2065

■ 42.1443, 20.0718,
24.9456

■ 77.2909, -7.9985,
-13.3894

■ 40.1359, 24.1092,
24.7930

■ 80.8482, -8.8986,
-18.7943

■ 39.2213, 26.0886,
24.6247

■ 83.8326, -13.1996,
-15.4845

■ 86.8117, -17.7681,
-11.4326

Harmonies

Analogous

The Analogous color harmony consists of three colors that are next to each other on the color wheel.



57.6287, 7.0696, 10.4186



57.6274, 1.3821, 13.4417



57.6287, -5.2696, 13.8885

Triad

The Triadic color harmony groups three colors that are evenly spaced from another and form a triangle on the color wheel.



57.6287, 1.3802, 13.4425



57.6287, -15.1526, 0.9966



57.6287, 5.3710, -7.0032

Complementary

The Complementary color scheme is a pair of colors which are on the opposite of each other on the color wheel.



57.6274, 1.3821, 13.4417



55.7053, -5.6687, -8.9415

Split Complementary

Split-complementary colors differ from the complementary color scheme. The scheme consists of three colors, the original color and two neighbors of the complement color.



57.6287, -0.8532, -10.1927



57.6274, 1.3821, 13.4417



57.6287, -12.5687, -5.2396

Square

The Square scheme is like the rectangle color scheme, but the four colors are evenly spaced on the color wheel.



57.6287, 1.3802, 13.4425



57.6287, -14.6155, 7.1605



57.6287, -7.4047, -9.5130



57.6287, 9.4452, -1.1996

Rectangle

The Rectangle color scheme consists of four colors that form a rectangle on the color wheel.



57.6274, 1.3821, 13.4417



57.6287, -9.3274, 12.7232



57.6287, -7.4047, -9.5130



57.6287, 3.4495, -8.4449

Sweetspot

The Sweet Spot groups the original color and five complimentary colors.



57.6287, 1.3802, 13.4425



84.1306, -2.7881, 9.3754



52.6267, 15.3138, -1.9768



39.3666, -1.1414, 4.8022



94.3401, -5.0338, 5.1257



41.3092, -2.2042, 2.2444

Same Dimension

The Same Dimension uses a secret algorithm to generate beautiful new colors.



57.6287, 1.3802, 13.4425



74.9951, 3.5224, 20.3899



63.9101, -8.9987, 19.3027



29.3639, -0.8786, 3.5137



33.3737, 21.6434, 20.9436



6.4799, 1.6448, 4.0217

Inverse Universe

The Inverse Universe completely reimagines the original color for something new.



55.7053, -5.6687, -8.9415



71.8918, -7.8196, -15.7420



49.5482, 4.8423, -17.9156



29.0238, -2.1305, -0.4416



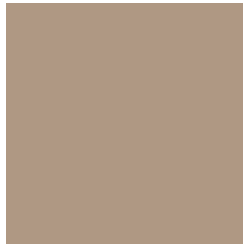
27.8487, 4.5340, -44.5962



5.6963, -1.0201, -4.9178

Previews

White Background



This preview shows how the HunterLab color 57.6274, 1.3821, 13.4417 looks on a white background.

Color Contrast Check

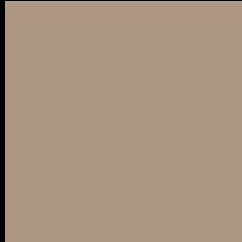
Large Text (above 18pt) WCAG AA × Fail

Any Text WCAG AA × Fail

Large Text (above 18pt) WCAG AAA × Fail

Any Text WCAG AAA × Fail

Black Background



This preview shows how the HunterLab color 57.6274, 1.3821, 13.4417 looks on a black background.

Color Contrast Check

Large Text (above 18pt) WCAG AA ✓ Pass

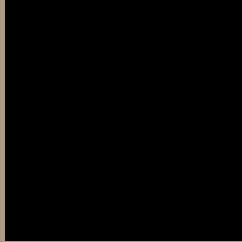
Any Text WCAG AA ✓ Pass

Large Text (above 18pt) WCAG AAA ✓ Pass

Any Text WCAG AAA ✓ Pass

If you want to check with other color combinations, try the [Color Contrast Checker](#).

HunterLab 57.6274, 1.3821, 13.4417 Background



This preview shows how black text looks on a background with the HunterLab color 57.6274, 1.3821, 13.4417.



This preview shows how white text looks on a background with the HunterLab color 57.6274, 1.3821,

Color Blindness Simulation

Color vision deficiency is a very complex topic, and I could not describe the different causes any better than Wikipedia does, so if you want to learn more, you should check out their [article about color blindness](#).

Dichromacy



Original Color

57.6274, 1.3821, 13.4417

Protanopia

57.7606, -3.9457, 12.7449

Deuteranopia

57.5801, 4.0948, 13.4419



Tritanopia

57.5743, 8.4019, 1.8457

Trichromacy



Original Color

57.6274, 1.3821, 13.4417

Protanomaly

57.8217, -2.2945, 13.2051

Deuteranomaly

57.6514, 2.9050, 13.4924

Tritanomaly

57.4560, 6.0242, 6.1682

Monochromacy



Original Color

57.6274, 1.3821, 13.4417

Achromatopsia

57.6586, -3.0765, 3.1327

Achromatomaly

57.7372, -1.8243, 7.1993

CSS Examples

Text

The CSS property to change the color of the text to HunterLab 57.6274, 1.3821, 13.4417 is called "color". The color property can be set on classes, ids or directly on the HTML element.

This example shows how text in the color `rgb(175, 152, 131)` looks like.

```
.text, #text, p{  
    color:rgb(175, 152, 131)  
}
```

If you want to add a text shadow in that color use the text-shadow property, you can generate a text shadow directly with our [CSS Text Shadow Generator](#).

Here you see how black text with a 4 pixel rgb(175, 152, 131) colored shadow looks like.

```
.shadow{ text-shadow: 4px 4px 2px rgb(175, 152, 131) }
```

Border

The CSS property to change the border of an element to HunterLab 57.6274, 1.3821, 13.4417 is called "border". The border property can be set on classes, ids or directly on the HTML element.

This example shows the color as border, it can be applied via the CSS property "border" or "border-color".

```
.border, #border, table{ border:4px solid rgb(175, 152, 131) }
```


If only the border color should be changed use the property `border-color`.

```
.border{ border-color:rgb(175, 152, 131) }
```

If you want to add a box shadow in that color use:

Here you see how a box with a 4 pixel `rgb(175, 152, 131)` colored shadow looks like.

```
.boxshadow{ -moz-box-shadow:4px 4px 4px  
4px rgb(175, 152, 131); -webkit-box-  
shadow:4px 4px 4px 4px rgb(175, 152, 131);  
box-shadow:4px 4px 4px 4px rgb(175, 152,  
131) }
```

Background

The CSS property to change the background color of an element to HunterLab 57.6274, 1.3821, 13.4417 is called "background". The background property can be set on classes, ids or directly on the HTML element.

```
.background, #background, body{  
background: rgb(175, 152, 131) }
```

If only the background color should be changed can be used:

```
.background{ background-color: rgb(175,  
152, 131) }
```

This example shows the color as background, it is applied via the CSS property "background".

To optimize and compress your CSS code, you can use our [online CSS compressor and optimizer](#) based on csstidy. If you want to create a linear or radial gradient as background or border, check our [CSS Gradient Generator](#).

Hey! You found this booklet interesting? Support Converting Colors with the new Membership Option!

The pro membership hides all ads, plus gives you double the colors in the color bucket, and more awesome pro features!

[Learn more, Memberships starting at \\$2.50/m!](#)

**Follow me
on Twitter!**

@ConvertingColor