

Converting Colors

HunterLab(57.7041, 9.2607,
4.0675)

Have a look what the booklet for
HunterLab(57.7041, 9.2607, 4.0675)
contains.

HunterLab(57.8718, 9.1389, 4.0500)	3
<i>Conversions</i>	4
<i>Details</i>	6
<i>Harmonies</i>	12
<i>Previews</i>	24
<i>Color Blindness Simulation</i>	28
<i>CSS Examples</i>	31

Color

**HunterLab(57.8718, 9.1389,
4.0500)**

Conversions

Conversions Part 1

Format	Color
Hex	B6949B
RGB	182, 148, 155
RGB Percent	71%, 58%, 61%
CMY	0.2863, 0.4196, 0.3922
CMYK	0.00, 0.19, 0.15, 0.29
HSL	348°, 19%, 65%
HSV	348°, 19%, 71%
XYZ	35.7977, 33.4915, 35.5881
YIQ	158.9640, 18.0170, 9.3850

Conversions

Conversions Part 2

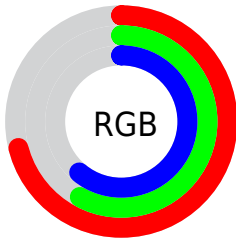
Format	Color
RYB	182, 148, 155
Decimal	11965595
CIELab	64.56, 13.85, 1.13
CIElCh	65, 13.900, 4.644
Yxy	33.4930, 0.3413, 0.3193
Android (android.graphics.Color)	4290155675 (0xFFB6949B)
YUV	158.9640, -1.9543, 20.2026
Hunter-Lab	57.8718, 9.1389, 4.0500

Details

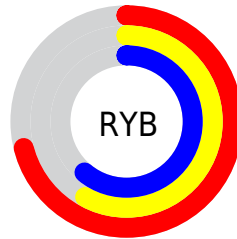
The HunterLab color $57.8718, 9.1389, 4.0500$ is a light color, and the websafe version is hex $CC9999$. A complement of this color would be $65.4582, -14.5284, 3.3432$, and the grayscale version is $58.8705, -3.1412, 3.1985$.

A 20% lighter version of the original color is $80.6360, 9.1697, 5.4948$, and $37.7041, 8.9449, 2.7950$ is the 20% darker color. If you saturate the color by 10%, you get $52.6954, 16.2549, 4.6009$, and if you desaturate by 10%, it is $63.3827, 2.2058, 3.7723$.

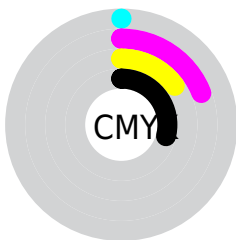
Distribution



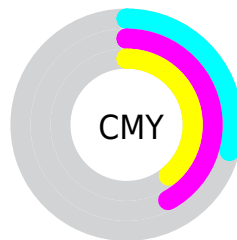
- Red (71%)
- Green (58%)
- Blue (61%)



- Red (71%)
- Yellow (58%)
- Blue (61%)



- Cyan (0%)
- Magenta (19%)
- Yellow (15%)
- Black (29%)



- Cyan (29%)
- Magenta (42%)
- Yellow (39%)

Brightness & Saturation Gradients

These gradients show how the HunterLab color 57.8718, 9.1389, 4.0500 changes by changing the brightness by 10 percent. The first figure shows a shift by +10% for each color and the second figure -10%.

Similar to the brightness gradients but the following saturation gradients show a change of the HunterLab color 57.8718, 9.1389, 4.0500 by changing the saturation by 10% instead.

■ 57.8718, 9.1389,
4.0500

■ 57.8718, 9.1389,
4.0500

178.2878, 7.9030,
11.0211

■ 47.4388, 8.9742,
3.4243

■ 80.7121, 9.2443,
5.4015

■ 37.7200, 8.7258,
2.8321

■ 93.0462, 9.2030,
6.1224

■ 28.7739, 8.3784,
2.2764

105.9516, 9.1054,
6.8722

■ 20.6742, 7.9134,
1.7594

119.4040, 8.9560,
7.6498

■ 13.5208, 7.3045,
1.2834

133.3819, 8.7582,
8.4544

■ 7.1036, 8.1193,
1.0434

147.8663, 8.5151,

0.0000, NaN, NaN

9.2849

0.0000, NaN, NaN

162.8401, 8.2292,
10.1407

0.0000, NaN, NaN

■ 57.8718, 9.1389,
4.0500

■ 57.8718, 9.1389,
4.0500

■ 52.6954, 16.2549,
4.6009

■ 63.3827, 2.2058,
3.7723

■ 47.9115, 23.5049,
5.4692

■ 69.1747, -4.5277,
3.7208

■ 43.5968, 30.7560,
6.6988

■ 75.2094, -11.0745,
3.8585

■ 39.8391, 37.7591,
8.3119

■ 81.4554, -17.4549,
4.1540

■ 36.7317, 44.1158,
10.2850

■ 87.8875, -23.6922,
4.5816

■ 34.3571, 49.3038,
12.5201

■ 93.7334, -28.7540,
4.2545

■ 32.7593, 52.8148,
14.8341

■ 94.1728, -26.2419,
-1.9944

■ 31.8532, 54.5960,
16.9513

■ 31.7516, 54.8053,
17.1856

Harmonies

Analogous

The Analogous color harmony consists of three colors that are next to each other on the color wheel.



57.8731, 7.9547, -1.8622



57.8718, 9.1389, 4.0500



57.8731, 6.9329, 9.1709

Triad

The Triadic color harmony groups three colors that are evenly spaced from another and form a triangle on the color wheel.



57.8731, 9.1370, 4.0510



57.8731, -9.6429, 11.6395



57.8731, -8.0547, -7.9306

Complementary

The Complementary color scheme is a pair of colors which are on the opposite of each other on the color wheel.



57.8718, 9.1389, 4.0500



65.4582, -14.5284, 3.3432

Split Complementary

Split-complementary colors differ from the complementary color scheme. The scheme consists of three colors, the original color and two neighbors of the complement color.



57.8731, -12.4761, -3.5961



57.8718, 9.1389, 4.0500



57.8731, -13.3659, 7.7509

Square

The Square scheme is like the rectangle color scheme, but the four colors are evenly spaced on the color wheel.



57.8731, 9.1370, 4.0510



57.8731, -4.0427, 13.2523



57.8731, -14.3813, 2.2346



57.8731, -2.1333, -9.1823

Rectangle

The Rectangle color scheme consists of four colors that form a rectangle on the color wheel.



57.8718, 9.1389, 4.0500



57.8731, 3.8915, 11.5721



57.8731, -14.3813, 2.2346



57.8731, -9.7575, -6.7651

Sweetspot

The Sweet Spot groups the original color and five complimentary colors.



57.8731, 9.1370, 4.0510



87.3191, 0.6078, 5.0344



57.9917, 11.2672, -9.3156



40.8025, 0.5640, 2.3704



96.5975, -5.1542, 5.2483



43.2801, -2.3093, 2.3515

Same Dimension

The Same Dimension uses a secret algorithm to generate beautiful new colors.



57.8731, 9.1370, 4.0510



75.2936, 15.8152, 5.6821



60.3435, 3.2621, 9.7108



30.0693, 1.2694, 1.8055



26.6973, 46.1108, 14.2211



5.1013, 8.9841, 1.3740

Inverse Universe

The Inverse Universe completely reimagines the original color for something new.



57.8731, 9.1370, 4.0510



75.2936, 15.8152, 5.6821



62.7050, -8.7347, -3.3604



30.0693, 1.2694, 1.8055



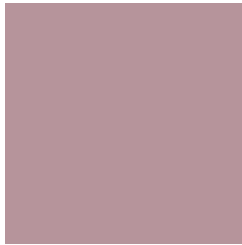
26.6973, 46.1108, 14.2211



5.1013, 8.9841, 1.3740

Previews

White Background



This preview shows how the HunterLab color 57.8718, 9.1389, 4.0500 looks on a white background.

Color Contrast Check

Large Text (above 18pt) WCAG AA × Fail

Any Text WCAG AA × Fail

Large Text (above 18pt) WCAG AAA × Fail

Any Text WCAG AAA × Fail

Black Background



This preview shows how the HunterLab color 57.8718, 9.1389, 4.0500 looks on a black background.

Color Contrast Check

Large Text (above 18pt) WCAG AA ✓ Pass

Any Text WCAG AA ✓ Pass

Large Text (above 18pt) WCAG AAA ✓ Pass

Any Text WCAG AAA ✓ Pass

If you want to check with other color combinations, try the [Color Contrast Checker](#).

HunterLab 57.8718, 9.1389, 4.0500 Background



This preview shows how black text looks on a background with the HunterLab color 57.8718, 9.1389, 4.0500.



This preview shows how white text looks on a background with the HunterLab color 57.8718, 9.1389,

4.0500.

Color Blindness Simulation

Color vision deficiency is a very complex topic, and I could not describe the different causes any better than Wikipedia does, so if you want to learn more, you should check out their [article about color blindness](#).

Dichromacy



Original Color

57.8718, 9.1389, 4.0500

Protanopia

58.0396, -1.5184, 1.7629

Deuteranopia

58.0291, 3.9405, 4.5901



Tritanopia

57.7198, 10.2692, 2.0532

Trichromacy



Original Color

57.8718, 9.1389, 4.0500

Protanomaly

57.8503, 2.1252, 2.5315

Deuteranomaly

58.0486, 5.4370, 4.6388

Tritanomaly

57.6898, 10.1120, 2.4802

Monochromacy



Original Color

57.8718, 9.1389, 4.0500

Achromatopsia

58.8816, -3.1418, 3.1991

Achromatomaly

58.4181, 1.1354, 3.1863

CSS Examples

Text

The CSS property to change the color of the text to HunterLab 57.8718, 9.1389, 4.0500 is called "color". The color property can be set on classes, ids or directly on the HTML element.

This example shows how text in the color `rgb(182, 148, 155)` looks like.

```
.text, #text, p{  
    color:rgb(182, 148, 155)  
}
```

If you want to add a text shadow in that color use the text-shadow property, you can generate a text shadow directly with our [CSS Text Shadow Generator](#).

Here you see how black text with a 4 pixel rgb(182, 148, 155) colored shadow looks like.

```
.shadow{ text-shadow: 4px 4px 2px rgb(182, 148, 155) }
```

Border

The CSS property to change the border of an element to HunterLab 57.8718, 9.1389, 4.0500 is called "border". The border property can be set on classes, ids or directly on the HTML element.

This example shows the color as border, it can be applied via the CSS property "border" or "border-color".

```
.border, #border, table{ border:4px solid rgb(182, 148, 155) }
```


If only the border color should be changed use the property `border-color`.

```
.border{ border-color:rgb(182, 148, 155) }
```

If you want to add a box shadow in that color use:

Here you see how a box with a 4 pixel `rgb(182, 148, 155)` colored shadow looks like.

```
.boxshadow{ -moz-box-shadow:4px 4px 4px  
4px rgb(182, 148, 155); -webkit-box-  
shadow:4px 4px 4px 4px rgb(182, 148, 155);  
box-shadow:4px 4px 4px 4px rgb(182, 148,  
155) }
```

Background

The CSS property to change the background color of an element to HunterLab 57.8718, 9.1389, 4.0500 is called "background". The background property can be set on classes, ids or directly on the HTML element.

```
.background, #background, body{  
background: rgb(182, 148, 155) }
```

If only the background color should be changed can be used:

```
.background{ background-color: rgb(182,  
148, 155) }
```

This example shows the color as background, it is applied via the CSS property "background".

To optimize and compress your CSS code, you can use our [online CSS compressor and optimizer](#) based on csstidy. If you want to create a linear or radial gradient as background or border, check our [CSS Gradient Generator](#).

Hey! You found this booklet interesting? Support Converting Colors with the new Membership Option!

The pro membership hides all ads, plus gives you double the colors in the color bucket, and more awesome pro features!

[Learn more, Memberships starting at \\$2.50/m!](#)

**Follow me
on Twitter!**

@ConvertingColor