

Converting Colors

HunterLab(57.8419, 12.5086,
11.6015)

Have a look what the booklet for
HunterLab(57.8419, 12.5086,
11.6015) contains.

HunterLab(57.9019, 12.3928, 11.6615)	3
<i>Conversions</i>	4
<i>Details</i>	6
<i>Harmonies</i>	12
<i>Previews</i>	24
<i>Color Blindness Simulation</i>	28
<i>CSS Examples</i>	31

Color

**HunterLab(57.9019, 12.3928,
11.6615)**

Conversions

Conversions Part 1

Format	Color
Hex	C29189
RGB	194, 145, 137
RGB Percent	76%, 57%, 54%
CMY	0.2392, 0.4314, 0.4627
CMYK	0.00, 0.25, 0.29, 0.24
HSL	8°, 32%, 65%
HSV	8°, 29%, 76%
XYZ	36.8889, 33.5263, 28.1939
YIQ	158.7390, 31.7720, 7.9000

Conversions

Conversions Part 2

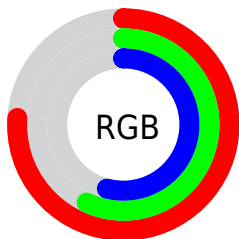
Format	Color
RYB	194, 146, 137
Decimal	12751241
CIELab	64.59, 17.37, 11.46
CIELCh	65, 20.809, 33.431
Yxy	33.5279, 0.3741, 0.3400
Android (android.graphics.Color)	4290941321 (0xFFC29189)
YUV	158.7390, -10.7173, 30.9239
Hunter-Lab	57.9019, 12.3928, 11.6615

Details

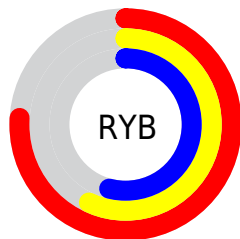
The HunterLab color **57.9019, 12.3928, 11.6615** is a light color, and the websafe version is hex **CC9999**. A complement of this color would be **66.5806, -15.6785, -4.6980**, and the grayscale version is **58.8094, -3.1379, 3.1952**.

A 20% lighter version of the original color is **80.6683, 12.6206, 14.1235**, and **37.6597, 11.6887, 9.2146** is the 20% darker color. If you saturate the color by 10%, you get **53.1905, 18.5217, 14.1332**, and if you desaturate by 10%, it is **62.9378, 6.5577, 9.0991**.

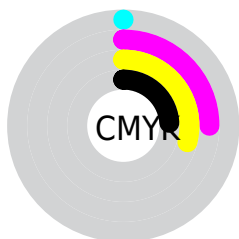
Distribution



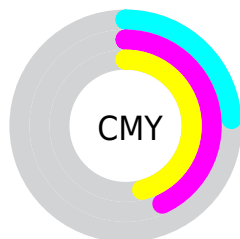
- Red (76%)
- Green (57%)
- Blue (54%)



- Red (76%)
- Yellow (57%)
- Blue (54%)



- Cyan (0%)
- Magenta (25%)
- Yellow (29%)
- Black (24%)





- Cyan (24%)
- Magenta (43%)
- Yellow (46%)

Brightness & Saturation Gradients

These gradients show how the HunterLab color 57.9019, 12.3928, 11.6615 changes by changing the brightness by 10 percent. The first figure shows a shift by +10% for each color and the second figure -10%.


Similar to the brightness gradients but the following saturation gradients show a change of the HunterLab color 57.9019, 12.3928, 11.6615 by changing the saturation by 10% instead.


 57.9019, 12.3928,
11.6615


 57.9019, 12.3928,
11.6615


178.3316, 12.4227,
22.6517

 47.4670, 12.0566,
10.4536


 80.7458, 12.8169,
14.0646

 37.7461, 11.6280,
9.2294


 93.0816, 12.9252,
15.2674

 28.7978, 11.0902,
7.9773


 105.9885, 12.9718,
16.4755

 20.6956, 10.4235,
6.6761

119.4423, 12.9614,
17.6909

 13.5394, 9.6024,
5.2881

133.4217, 12.8981,
18.9152

 7.1254, 10.2813,
4.9877

147.9075, 12.7852,

0.0000, NaN, NaN

20.1495

0.0000, NaN, NaN

162.8826, 12.6259,
21.3948

0.0000, NaN, NaN

■ 57.9019, 12.3928,
11.6615

■ 57.9019, 12.3928,
11.6615

■ 53.1905, 18.5217,
14.1332

■ 62.9378, 6.5577,
9.0991

■ 48.8538, 24.9160,
16.4555

■ 68.2488, 1.0220,
6.4794

■ 44.9570, 31.4753,
18.5478

■ 73.7994, -4.2372,
3.8256

■ 41.5705, 38.0085,
20.3014

■ 79.5591, -9.2482,
1.1510

■ 38.7650, 44.2092,
21.5902

■ 85.5035, -14.0416,
-1.5369

■ 36.5991, 49.6691,
22.3036

■ 91.6123, -18.6464,
-4.2344

■ 35.0935, 53.9285,
22.5103

■ 94.9786, -23.2711,
-0.9405

■ 35.0205, 54.1395,
22.5273

Harmonies

Analogous

The Analogous color harmony consists of three colors that are next to each other on the color wheel.



57.9033, 15.6060, 4.1481



57.9019, 12.3928, 11.6615



57.9033, 5.0175, 16.2511

Triad

The Triadic color harmony groups three colors that are evenly spaced from another and form a triangle on the color wheel.



57.9033, 12.3905, 11.6624



57.9033, -18.0527, 10.1718



57.9033, -2.0321, -16.2444

Complementary

The Complementary color scheme is a pair of colors which are on the opposite of each other on the color wheel.



57.9019, 12.3928, 11.6615



66.5806, -15.6785, -4.6980

Split Complementary

Split-complementary colors differ from the complementary color scheme. The scheme consists of three colors, the original color and two neighbors of the complement color.



57.9033, -10.7797, -13.9718



57.9019, 12.3928, 11.6615



57.9033, -19.6836, 2.1375

Square

The Square scheme is like the rectangle color scheme, but the four colors are evenly spaced on the color wheel.



57.9033, 12.3905, 11.6624



57.9033, -12.5022, 15.4893



57.9033, -17.1026, -6.8858



57.9033, 6.9590, -12.6893

Rectangle

The Rectangle color scheme consists of four colors that form a rectangle on the color wheel.



57.9019, 12.3928, 11.6615



57.9033, -1.0592, 17.4774



57.9033, -17.1026, -6.8858



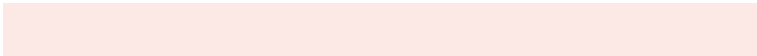
57.9033, -5.0985, -16.1386

Sweetspot

The Sweet Spot groups the original color and five complimentary colors.



57.9033, 12.3905, 11.6624



92.0381, 1.2028, 8.6367



57.3788, 24.3331, -12.4501



42.5636, 1.0682, 4.2882

0.0000, NaN, NaN



46.2646, -2.4686, 2.5136

Same Dimension

The Same Dimension uses a secret algorithm to generate beautiful new colors.



57.9033, 12.3905, 11.6624



73.9664, 21.7272, 17.7699



65.7277, -1.7046, 19.1219



32.0951, 0.4771, 3.0450



28.5239, 43.4835, 18.3376



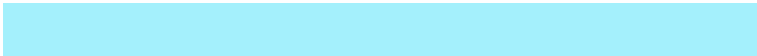
6.5335, 7.2139, 4.1522

Inverse Universe

The Inverse Universe completely reimagines the original color for something new.



66.5806, -15.6785, -4.6980



87.9230, -23.6417, -8.5922



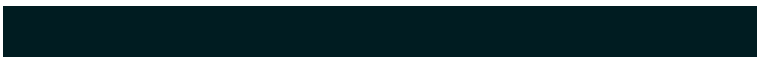
57.9943, -2.1842, -16.4817



33.4357, -3.8235, 0.5252



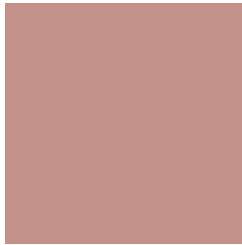
45.5677, -19.0111, -15.9162



9.8226, -4.4014, -2.7760

Previews

White Background



This preview shows how the HunterLab color 57.9019, 12.3928, 11.6615 looks on a white background.

Color Contrast Check

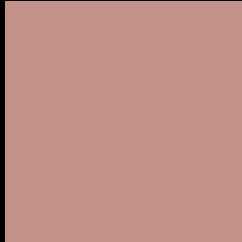
Large Text (above 18pt) WCAG AA × Fail

Any Text WCAG AA × Fail

Large Text (above 18pt) WCAG AAA × Fail

Any Text WCAG AAA × Fail

Black Background



This preview shows how the HunterLab color 57.9019, 12.3928, 11.6615 looks on a black background.

Color Contrast Check

Large Text (above 18pt) WCAG AA ✓ Pass

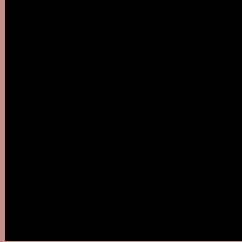
Any Text WCAG AA ✓ Pass

Large Text (above 18pt) WCAG AAA ✓ Pass

Any Text WCAG AAA ✓ Pass

If you want to check with other color combinations, try the [Color Contrast Checker](#).

HunterLab 57.9019, 12.3928, 11.6615 Background



This preview shows how black text looks on a background with the HunterLab color 57.9019, 12.3928, 11.6615.



This preview shows how white text looks on a background with the HunterLab color 57.9019, 12.3928,

Color Blindness Simulation

Color vision deficiency is a very complex topic, and I could not describe the different causes any better than Wikipedia does, so if you want to learn more, you should check out their [article about color blindness](#).

Dichromacy



Original Color

57.9019, 12.3928, 11.6615

Protanopia

57.9195, -2.8914, 9.0376

Deuteranopia

57.9777, 4.2424, 11.9800



Tritanopia

58.0350, 16.3536, 5.2585

Trichromacy



Original Color

57.9019, 12.3928, 11.6615

Protanomaly

57.7739, 2.3721, 9.7809

Deuteranomaly

57.9541, 6.9940, 12.0040

Tritanomaly

58.0131, 14.6155, 7.7919

Monochromacy



Original Color

57.9019, 12.3928, 11.6615

Achromatopsia

58.8816, -3.1418, 3.1991

Achromatomaly

58.4091, 2.1621, 6.3095

CSS Examples

Text

The CSS property to change the color of the text to HunterLab 57.9019, 12.3928, 11.6615 is called "color". The color property can be set on classes, ids or directly on the HTML element.

This example shows how text in the color `rgb(194, 145, 137)` looks like.

```
.text, #text, p{  
    color:rgb(194, 145, 137)  
}
```

If you want to add a text shadow in that color use the text-shadow property, you can generate a text shadow directly with our [CSS Text Shadow Generator](#).

Here you see how black text with a 4 pixel rgb(194, 145, 137) colored shadow looks like.

```
.shadow{ text-shadow: 4px 4px 2px rgb(194, 145, 137) }
```

Border

The CSS property to change the border of an element to HunterLab 57.9019, 12.3928, 11.6615 is called "border". The border property can be set on classes, ids or directly on the HTML element.

This example shows the color as border, it can be applied via the CSS property "border" or "border-color".

```
.border, #border, table{ border:4px solid rgb(194, 145, 137) }
```


If only the border color should be changed use the property `border-color`.

```
.border{ border-color:rgb(194, 145, 137) }
```

If you want to add a box shadow in that color use:

Here you see how a box with a 4 pixel `rgb(194, 145, 137)` colored shadow looks like.

```
.boxshadow{ -moz-box-shadow:4px 4px 4px  
4px rgb(194, 145, 137); -webkit-box-  
shadow:4px 4px 4px 4px rgb(194, 145, 137);  
box-shadow:4px 4px 4px 4px rgb(194, 145,  
137) }
```

Background

The CSS property to change the background color of an element to HunterLab 57.9019, 12.3928, 11.6615 is called "background". The background property can be set on classes, ids or directly on the HTML element.

```
.background, #background, body{  
background: rgb(194, 145, 137) }
```

If only the background color should be changed can be used:

```
.background{ background-color: rgb(194,  
145, 137) }
```

This example shows the color as background, it is applied via the CSS property "background".

To optimize and compress your CSS code, you can use our [online CSS compressor and optimizer](#) based on csstidy. If you want to create a linear or radial gradient as background or border, check our [CSS Gradient Generator](#).

Hey! You found this booklet interesting? Support Converting Colors with the new Membership Option!

The pro membership hides all ads, plus gives you double the colors in the color bucket, and more awesome pro features!

[Learn more, Memberships starting at \\$2.50/m!](#)

**Follow me
on Twitter!**

@ConvertingColor