

Converting Colors

HunterLab(57.8430, 42.8671,
9.2526)

Have a look what the booklet for
HunterLab(57.8430, 42.8671,
9.2526) contains.

HunterLab(57.8369, 42.8385, 9.3403)	3
<i>Conversions</i>	4
<i>Details</i>	6
<i>Harmonies</i>	12
<i>Previews</i>	24
<i>Color Blindness Simulation</i>	28
<i>CSS Examples</i>	31

Color

**HunterLab(57.8369, 42.8385,
9.3403)**

Conversions

Conversions Part 1

Format	Color
Hex	ED7890
RGB	237, 120, 144
RGB Percent	93%, 47%, 56%
CMY	0.0706, 0.5294, 0.4353
CMYK	0.00, 0.49, 0.39, 0.07
HSL	348°, 76%, 70%
HSV	348°, 49%, 93%
XYZ	46.6755, 33.4511, 30.3822
YIQ	157.7190, 62.0280, 32.2680

Conversions

Conversions Part 2

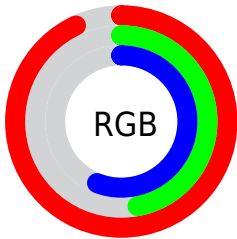
Format	Color
R _Y B	237, 120, 144
Decimal	15562896
CIE Lab	64.53, 47.38, 8.14
CIE LCh	65, 48.079, 9.753
Yxy	33.4528, 0.4224, 0.3027
Android (android.graphics.Color)	4293752976 (0xFFED7890)
YUV	157.7190, -6.7635, 69.5294
Hunter-Lab	57.8369, 42.8385, 9.3403

Details

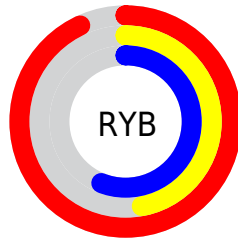
The HunterLab color **57.8369, 42.8385, 9.3403** is a light color, and the websafe version is hex **FF9999**. A complement of this color would be **83.2864, -38.5012, 5.8304**, and the grayscale version is **58.3691, -3.1144, 3.1713**.

A 20% lighter version of the original color is **74.8313, 28.2996, 4.2758**, and **37.7987, 39.5752, 7.3736** is the 20% darker color. If you saturate the color by 10%, you get **52.8310, 52.3158, 11.6353**, and if you desaturate by 10%, it is **63.6404, 32.9388, 7.5798**.

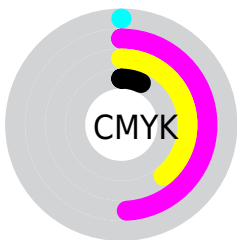
Distribution



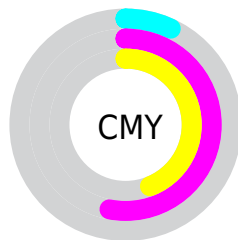
- Red (93%)
- Green (47%)
- Blue (56%)



- Red (93%)
- Yellow (47%)
- Blue (56%)



- Cyan (0%)
- Magenta (49%)
- Yellow (39%)
- Black (7%)



- Cyan (7%)
- Magenta (53%)
- Yellow (44%)

Brightness & Saturation Gradients

These gradients show how the HunterLab color 57.8369, 42.8385, 9.3403 changes by changing the brightness by 10 percent. The first figure shows a shift by +10% for each color and the second figure -10%.

Similar to the brightness gradients but the following saturation gradients show a change of the HunterLab color 57.8369, 42.8385, 9.3403 by changing the saturation by 10% instead.

57.8369, 42.8385,
9.3403

57.8369, 42.8385,
9.3403

178.2372, 52.8138,
19.0019

47.4063, 41.2451,
8.3273

80.6733, 45.6829,
11.3936

37.6899, 39.5401,
7.3155

93.0056, 46.9535,
12.4367

28.7464, 37.7269,
6.2984

105.9091, 48.1308,
13.4932

20.6496, 35.8400,
5.2634

119.3597, 49.2208,
14.5640

13.4994, 34.0031,
4.1868

133.3360, 50.2293,
15.6499

7.0784, 35.6946,
4.9549

147.8188, 51.1613,

0.0000, INF, NaN

16.7514

0.0000, NaN, NaN

162.7911, 52.0215,
17.8686

0.0000, NaN, NaN

■ 57.8369, 42.8385,
9.3403

■ 57.8369, 42.8385,
9.3403

■ 52.8310, 52.3158,
11.6353

■ 63.6404, 32.9388,
7.5798

■ 48.7498, 60.7842,
14.4127

■ 70.1110, 23.0083,
6.3260

■ 45.7049, 67.4857,
17.5131

■ 77.1409, 13.2470,
5.5222

■ 43.7423, 71.7450,
20.6569

■ 84.6407, 3.7411,
5.1019

■ 42.7385, 73.5292,
23.4670

■ 92.5386, -5.4892,
5.0020

■ 42.6883, 73.6168,
23.6177

■ 98.3588, -11.0930,
3.3851

Harmonies

Analogous

The Analogous color harmony consists of three colors that are next to each other on the color wheel.



57.8384, 40.3560, -11.9489



57.8369, 42.8385, 9.3403



57.8384, 31.7180, 22.8663

Triad

The Triadic color harmony groups three colors that are evenly spaced from another and form a triangle on the color wheel.



57.8384, 42.8350, 9.3415



57.8384, -26.9239, 25.7356



57.8384, -16.5354, -46.3501

Complementary

The Complementary color scheme is a pair of colors which are on the opposite of each other on the color wheel.



57.8369, 42.8385, 9.3403



83.2864, -38.5012, 5.8304

Split Complementary

Split-complementary colors differ from the complementary color scheme. The scheme consists of three colors, the original color and two neighbors of the complement color.



57.8384, -31.2192, -27.5561



57.8369, 42.8385, 9.3403



57.8384, -36.5905, 15.0280

Square

The Square scheme is like the rectangle color scheme, but the four colors are evenly spaced on the color wheel.



57.8384, 42.8350, 9.3415



57.8384, -9.8361, 29.8150



57.8384, -38.0407, -3.8159



57.8384, 3.9819, -49.6135

Rectangle

The Rectangle color scheme consists of four colors that form a rectangle on the color wheel.



57.8369, 42.8385, 9.3403



57.8384, 18.9182, 27.6331



57.8384, -38.0407, -3.8159



57.8384, -22.2301, -41.3854

Sweetspot

The Sweet Spot groups the original color and five complimentary colors.



57.8384, 42.8350, 9.3415



87.2760, 9.9118, 5.7572



57.8743, 50.0168, -45.5430



39.5878, 5.6023, 2.7147

0.0000, NaN, NaN



46.2646, -2.4686, 2.5136

Same Dimension

The Same Dimension uses a secret algorithm to generate beautiful new colors.



57.8384, 42.8350, 9.3415



57.4739, 56.7202, 12.6074



64.9569, 22.9884, 24.2074



38.8646, 1.7609, 2.3458



31.5661, 54.4837, 17.0969



8.9219, 15.5493, 3.6694

Inverse Universe

The Inverse Universe completely reimagines the original color for something new.



57.8384, 42.8350, 9.3415



57.4739, 56.7202, 12.6074



72.9543, -18.5691, -20.4850



38.8646, 1.7609, 2.3458



31.5661, 54.4837, 17.0969



8.9219, 15.5493, 3.6694

Previews

White Background



This preview shows how the HunterLab color 57.8369, 42.8385, 9.3403 looks on a white background.

Color Contrast Check

Large Text (above 18pt) WCAG AA × Fail

Any Text WCAG AA × Fail

Large Text (above 18pt) WCAG AAA × Fail

Any Text WCAG AAA × Fail

Black Background



This preview shows how the HunterLab color 57.8369, 42.8385, 9.3403 looks on a black background.

Color Contrast Check

Large Text (above 18pt) WCAG AA ✓ Pass

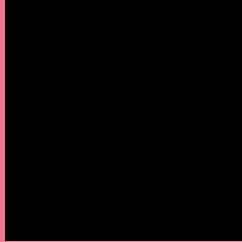
Any Text WCAG AA ✓ Pass

Large Text (above 18pt) WCAG AAA ✓ Pass

Any Text WCAG AAA ✓ Pass

If you want to check with other color combinations, try the [Color Contrast Checker](#).

HunterLab 57.8369, 42.8385, 9.3403 Background



This preview shows how black text looks on a background with the HunterLab color 57.8369, 42.8385, 9.3403.



This preview shows how white text looks on a background with the HunterLab color 57.8369, 42.8385, 9.3403.

Color Blindness Simulation

Color vision deficiency is a very complex topic, and I could not describe the different causes any better than Wikipedia does, so if you want to learn more, you should check out their [article about color blindness](#).

Dichromacy



Original Color

57.8369, 42.8385, 9.3403

Protanopia

58.0744, -1.1533, -0.0921

Deuteranopia

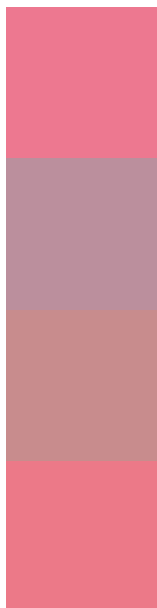
57.9491, 4.2960, 10.7919



Tritanopia

57.7846, 39.8872, 14.2728

Trichromacy



Original Color

57.8369, 42.8385, 9.3403

Protanomaly

57.1350, 13.7396, 2.3454

Deuteranomaly

57.4096, 17.7004, 9.6607

Tritanomaly

57.6933, 40.9665, 12.3304

Monochromacy



Original Color

57.8369, 42.8385, 9.3403

Achromatopsia

58.4734, -3.1200, 3.1770

Achromatomaly

57.2811, 12.6165, 4.3233

CSS Examples

Text

The CSS property to change the color of the text to HunterLab 57.8369, 42.8385, 9.3403 is called "color". The color property can be set on classes, ids or directly on the HTML element.

This example shows how text in the color `rgb(237, 120, 144)` looks like.

```
.text, #text, p{  
    color:rgb(237, 120, 144)  
}
```

If you want to add a text shadow in that color use the text-shadow property, you can generate a text shadow directly with our [CSS Text Shadow Generator](#).

Here you see how black text with a 4 pixel rgb(237, 120, 144) colored shadow looks like.

```
.shadow{ text-shadow: 4px 4px 2px rgb(237, 120, 144) }
```

Border

The CSS property to change the border of an element to HunterLab 57.8369, 42.8385, 9.3403 is called "border". The border property can be set on classes, ids or directly on the HTML element.

This example shows the color as border, it can be applied via the CSS property "border" or "border-color".

```
.border, #border, table{ border:4px solid rgb(237, 120, 144) }
```


If only the border color should be changed use the property `border-color`.

```
.border{ border-color:rgb(237, 120, 144) }
```

If you want to add a box shadow in that color use:

Here you see how a box with a 4 pixel `rgb(237, 120, 144)` colored shadow looks like.

```
.boxshadow{ -moz-box-shadow:4px 4px 4px  
4px rgb(237, 120, 144); -webkit-box-  
shadow:4px 4px 4px 4px rgb(237, 120, 144);  
box-shadow:4px 4px 4px 4px rgb(237, 120,  
144) }
```

Background

The CSS property to change the background color of an element to HunterLab 57.8369, 42.8385, 9.3403 is called "background". The background property can be set on classes, ids or directly on the HTML element.

```
.background, #background, body{  
background: rgb(237, 120, 144) }
```

If only the background color should be changed can be used:

```
.background{ background-color: rgb(237,  
120, 144) }
```

This example shows the color as background, it is applied via the CSS property "background".

To optimize and compress your CSS code, you can use our [online CSS compressor and optimizer](#) based on csstidy. If you want to create a linear or radial gradient as background or border, check our [CSS Gradient Generator](#).

Hey! You found this booklet interesting? Support Converting Colors with the new Membership Option!

The pro membership hides all ads, plus gives you double the colors in the color bucket, and more awesome pro features!

[Learn more, Memberships starting at \\$2.50/m!](#)

**Follow me
on Twitter!**

@ConvertingColor