

Converting Colors

HunterLab(57.8456, 7.2011,
1.3482)

Have a look what the booklet for
HunterLab(57.8456, 7.2011, 1.3482)
contains.

HunterLab(57.9793, 7.0409, 1.3694)	3
<i>Conversions</i>	4
<i>Details</i>	6
<i>Harmonies</i>	12
<i>Previews</i>	24
<i>Color Blindness Simulation</i>	28
<i>CSS Examples</i>	31

Color

**HunterLab(57.9793, 7.0409,
1.3694)**

Conversions

Conversions Part 1

Format	Color
Hex	B096A1
RGB	176, 150, 161
RGB Percent	69%, 59%, 63%
CMY	0.3098, 0.4117, 0.3686
CMYK	0.00, 0.15, 0.09, 0.31
HSL	335°, 14%, 64%
HSV	335°, 15%, 69%
XYZ	35.2438, 33.6160, 38.3492
YIQ	159.0280, 11.9650, 8.9330

Conversions

Conversions Part 2

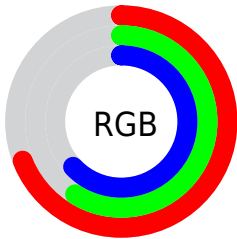
Format	Color
R_{YB}	176, 150, 161
Decimal	11572897
CIE _{Lab}	64.66, 11.55, -2.18
CIE _{LCh}	65, 11.756, 349.328
Yxy	33.6175, 0.3287, 0.3136
Android (android.graphics.Color)	4289762977 (0xFFB096A1)
YUV	159.0280, 0.9722, 14.8844
Hunter-Lab	57.9793, 7.0409, 1.3694

Details

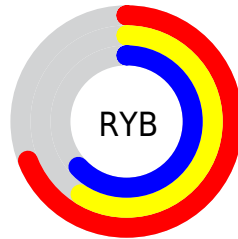
The HunterLab color $57.9793, 7.0409, 1.3694$ is a light color, and the websafe version is hex 999999 . A complement of this color would be $63.4446, -12.8493, 5.6013$, and the grayscale version is $58.8868, -3.1421, 3.1994$.

A 20% lighter version of the original color is $80.8080, 7.1729, 2.2528$, and $37.7630, 6.9196, 0.2293$ is the 20% darker color. If you saturate the color by 10%, you get $52.9829, 14.3613, 0.2092$, and if you desaturate by 10%, it is $63.2738, -0.1435, 2.8111$.

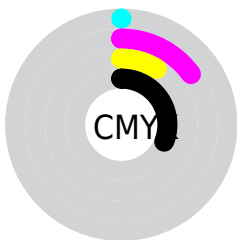
Distribution



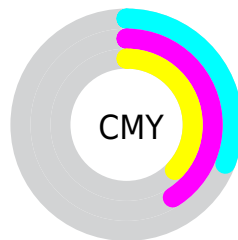
- Red (69%)
- Green (59%)
- Blue (63%)



- Red (69%)
- Yellow (59%)
- Blue (63%)



- Cyan (0%)
- Magenta (15%)
- Yellow (9%)
- Black (31%)



- Cyan (31%)
- Magenta (41%)
- Yellow (37%)

Brightness & Saturation Gradients

These gradients show how the HunterLab color 57.9793, 7.0409, 1.3694 changes by changing the brightness by 10 percent. The first figure shows a shift by +10% for each color and the second figure -10%.

Similar to the brightness gradients but the following saturation gradients show a change of the HunterLab color 57.9793, 7.0409, 1.3694 by changing the saturation by 10% instead.

■ 57.9793, 7.0409,
1.3694

■ 57.9793, 7.0409,
1.3694

178.4441, 4.9588,
7.1371

■ 47.5393, 6.9920,
0.9128

■ 80.8322, 6.9321,
2.4113

■ 37.8132, 6.8659,
0.5018

■ 93.1721, 6.7904,
2.9889

■ 28.8591, 6.6487,
0.1427

106.0831, 6.5966,
3.6017

■ 20.7505, 6.3233,
-0.1578

119.5408, 6.3543,
4.2478

■ 13.5870, 5.8642,
-0.3895

133.5238, 6.0668,
4.9257

■ 7.1809, 6.6270,
-0.8659

148.0132, 5.7369,

0.0000, NaN, NaN

5.6340

0.0000, NaN, NaN

162.9918, 5.3668,
6.3715

0.0000, NaN, NaN

■ 57.9793, 7.0409,
1.3694

■ 57.9793, 7.0409,
1.3694

■ 52.9829, 14.3613,
0.2092

■ 63.2738, -0.1435,
2.8111

■ 48.3331, 21.7708,
-0.6003

■ 68.8205, -7.1719,
4.4749

■ 44.0947, 29.1518,
-0.9697

■ 74.5868, -14.0510,
6.3184

■ 40.3423, 36.2902,
-0.7994

■ 80.5454, -20.7950,
8.3089

■ 37.1572, 42.8433,
0.0044

■ 86.6742, -27.4216,
10.4212

■ 34.6168, 48.3461,
1.4965

■ 92.7472, -33.6677,
12.4139

■ 32.7747, 52.2992,
3.6470

■ 93.0491, -31.9235,
8.0908

■ 31.6317, 54.3667,
6.3045

■ 93.3678, -30.0882,
3.5411

■ 31.1941, 55.0252,
7.7197

■ 93.7036, -28.1621,
-1.2346

Harmonies

Analogous

The Analogous color harmony consists of three colors that are next to each other on the color wheel.



57.9806, 4.6677, -3.3778



57.9793, 7.0409, 1.3694



57.9806, 6.6236, 6.2109

Triad

The Triadic color harmony groups three colors that are evenly spaced from another and form a triangle on the color wheel.



57.9806, 7.0392, 1.3704



57.9806, -6.3628, 11.4183



57.9806, -9.4582, -4.5154

Complementary

The Complementary color scheme is a pair of colors which are on the opposite of each other on the color wheel.



57.9793, 7.0409, 1.3694



63.4446, -12.8493, 5.6013

Split Complementary

Split-complementary colors differ from the complementary color scheme. The scheme consists of three colors, the original color and two neighbors of the complement color.



57.9806, -12.2162, -0.0746



57.9793, 7.0409, 1.3694



57.9806, -10.4731, 9.0082

Square

The Square scheme is like the rectangle color scheme, but the four colors are evenly spaced on the color wheel.



57.9806, 7.0392, 1.3704



57.9806, -1.2372, 11.7312



57.9806, -12.5811, 4.8866



57.9806, -4.9332, -6.9691

Rectangle

The Rectangle color scheme consists of four colors that form a rectangle on the color wheel.



57.9793, 7.0409, 1.3694



57.9806, 4.8260, 8.8557



57.9806, -12.5811, 4.8866



57.9806, -10.6158, -3.1882

Sweetspot

The Sweet Spot groups the original color and five complimentary colors.



57.9806, 7.0392, 1.3704



85.7250, -0.8632, 3.9338



57.3757, 6.0090, -6.9853



39.6551, -0.0722, 1.7585



94.3401, -5.0338, 5.1257



41.3092, -2.2042, 2.2444

Same Dimension

The Same Dimension uses a secret algorithm to generate beautiful new colors.



57.9806, 7.0392, 1.3704



75.6492, 12.9557, 1.2437



58.1409, 4.4666, 6.4781



29.2625, 1.4976, 1.0216



26.7408, 47.2096, 6.3097



4.8658, 8.8192, -0.6268

Inverse Universe

The Inverse Universe completely reimagines the original color for something new.



57.9806, 7.0392, 1.3704



75.6492, 12.9557, 1.2437



63.2413, -10.1827, 0.2824



29.2625, 1.4976, 1.0216



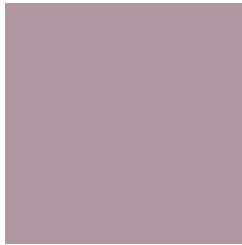
26.7408, 47.2096, 6.3097



4.8658, 8.8192, -0.6268

Previews

White Background



This preview shows how the HunterLab color 57.9793, 7.0409, 1.3694 looks on a white background.

Color Contrast Check

Large Text (above 18pt) WCAG AA × Fail

Any Text WCAG AA × Fail

Large Text (above 18pt) WCAG AAA × Fail

Any Text WCAG AAA × Fail

Black Background



This preview shows how the HunterLab color 57.9793, 7.0409, 1.3694 looks on a black background.

Color Contrast Check

Large Text (above 18pt) WCAG AA ✓ Pass

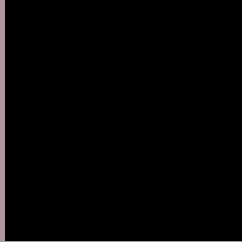
Any Text WCAG AA ✓ Pass

Large Text (above 18pt) WCAG AAA ✓ Pass

Any Text WCAG AAA ✓ Pass

If you want to check with other color combinations, try the [Color Contrast Checker](#).

HunterLab 57.9793, 7.0409, 1.3694 Background



This preview shows how black text looks on a background with the HunterLab color 57.9793, 7.0409, 1.3694.



This preview shows how white text looks on a background with the HunterLab color 57.9793, 7.0409,

1.3694.

Color Blindness Simulation

Color vision deficiency is a very complex topic, and I could not describe the different causes any better than Wikipedia does, so if you want to learn more, you should check out their [article about color blindness](#).

Dichromacy



Original Color

57.9793, 7.0409, 1.3694

Protanopia

58.1056, -0.9833, -0.5357

Deuteranopia

57.9446, 4.0707, 1.2753



Tritanopia

58.0099, 7.2029, 0.9348

Trichromacy



Original Color

57.9793, 7.0409, 1.3694

Protanomaly

58.1299, 1.9812, 0.0312

Deuteranomaly

57.8594, 5.2206, 1.1922

Tritanomaly

58.0099, 7.2029, 0.9348

Monochromacy



Original Color

57.9793, 7.0409, 1.3694

Achromatopsia

58.8816, -3.1418, 3.1991

Achromatomaly

58.5784, 0.3327, 2.4399

CSS Examples

Text

The CSS property to change the color of the text to HunterLab 57.9793, 7.0409, 1.3694 is called "color". The color property can be set on classes, ids or directly on the HTML element.

This example shows how text in the color `rgb(176, 150, 161)` looks like.

```
.text, #text, p{  
    color:rgb(176, 150, 161)  
}
```

If you want to add a text shadow in that color use the text-shadow property, you can generate a text shadow directly with our [CSS Text Shadow Generator](#).

Here you see how black text with a 4 pixel rgb(176, 150, 161) colored shadow looks like.

```
.shadow{ text-shadow: 4px 4px 2px rgb(176, 150, 161) }
```

Border

The CSS property to change the border of an element to HunterLab 57.9793, 7.0409, 1.3694 is called "border". The border property can be set on classes, ids or directly on the HTML element.

This example shows the color as border, it can be applied via the CSS property "border" or "border-color".

```
.border, #border, table{ border:4px solid rgb(176, 150, 161) }
```


If only the border color should be changed use the property `border-color`.

```
.border{ border-color:rgb(176, 150, 161) }
```

If you want to add a box shadow in that color use:

Here you see how a box with a 4 pixel `rgb(176, 150, 161)` colored shadow looks like.

```
.boxshadow{ -moz-box-shadow:4px 4px 4px  
4px rgb(176, 150, 161); -webkit-box-  
shadow:4px 4px 4px 4px rgb(176, 150, 161);  
box-shadow:4px 4px 4px 4px rgb(176, 150,  
161) }
```

Background

The CSS property to change the background color of an element to HunterLab 57.9793, 7.0409, 1.3694 is called "background". The background property can be set on classes, ids or directly on the HTML element.

```
.background, #background, body{  
background: rgb(176, 150, 161) }
```

If only the background color should be changed can be used:

```
.background{ background-color: rgb(176,  
150, 161) }
```

This example shows the color as background, it is applied via the CSS property "background".

To optimize and compress your CSS code, you can use our [online CSS compressor and optimizer](#) based on csstidy. If you want to create a linear or radial gradient as background or border, check our [CSS Gradient Generator](#).

Hey! You found this booklet interesting? Support Converting Colors with the new Membership Option!

The pro membership hides all ads, plus gives you double the colors in the color bucket, and more awesome pro features!

[Learn more, Memberships starting at \\$2.50/m!](#)

**Follow me
on Twitter!**

@ConvertingColor