

Converting Colors

HunterLab(57.9263, 52.9914,
11.2266)

Have a look what the booklet for
HunterLab(57.9263, 52.9914,
11.2266) contains.

HunterLab(57.9263, 52.9914, 11.2266)	3
<i>Conversions</i>	4
<i>Details</i>	6
<i>Harmonies</i>	12
<i>Previews</i>	24
<i>Color Blindness Simulation</i>	28
<i>CSS Examples</i>	31

Color

**HunterLab(57.9263, 52.9914,
11.2266)**

Conversions

Conversions Part 1

Format	Color
Hex	FB6E8C
RGB	251, 110, 140
RGB Percent	98%, 43%, 55%
CMY	0.0157, 0.5686, 0.4510
CMYK	0.00, 0.56, 0.44, 0.02
HSL	347°, 95%, 71%
HSV	347°, 56%, 98%
XYZ	50.0932, 33.5546, 28.6474
YIQ	155.5790, 74.4060, 39.2220

Conversions

Conversions Part 2

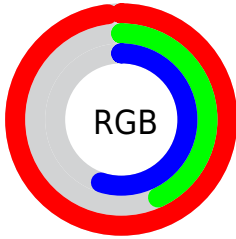
Format	Color
R _Y B	251, 110, 140
Decimal	16477836
CIE Lab	64.61, 56.43, 10.82
CIE LCh	65, 57.457, 10.859
Yxy	33.5563, 0.4461, 0.2988
Android (android.graphics.Color)	4294667916 (0xFFFB6E8C)
YUV	155.5790, -7.6804, 83.6842
Hunter-Lab	57.9263, 52.9914, 11.2266

Details

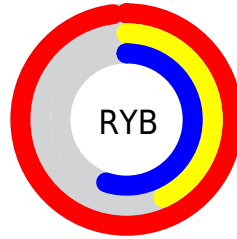
The HunterLab color **57.9263, 52.9914, 11.2266** is a light color, and the websafe version is hex **FF6699**. A complement of this color would be **88.0515, -44.6592, 7.4096**, and the grayscale version is **57.4979, -3.0679, 3.1240**.

A 20% lighter version of the original color is **72.3759, 32.4225, 3.8352**, and **37.7247, 49.2152, 8.9050** is the 20% darker color. If you saturate the color by 10%, you get **53.2482, 62.4585, 14.0340**, and if you desaturate by 10%, it is **63.5587, 42.6375, 8.9890**.

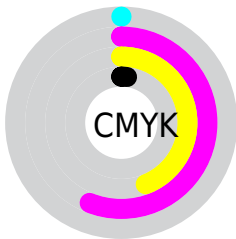
Distribution



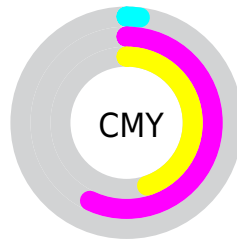
- Red (98%)
- Green (43%)
- Blue (55%)



- Red (98%)
- Yellow (43%)
- Blue (55%)



- Cyan (0%)
- Magenta (56%)
- Yellow (44%)
- Black (2%)



- Cyan (2%)
- Magenta (57%)
- Yellow (45%)

Brightness & Saturation Gradients

These gradients show how the HunterLab color 57.9263, 52.9914, 11.2266 changes by changing the brightness by 10 percent. The first figure shows a shift by +10% for each color and the second figure -10%.

Similar to the brightness gradients but the following saturation gradients show a change of the HunterLab color 57.9263, 52.9914, 11.2266 by changing the saturation by 10% instead.

57.9263, 52.9914,
11.2266

57.9263, 52.9914,
11.2266

178.3674, 65.6175,
21.9585

47.4900, 51.1014,
10.0571

80.7732, 56.4438,
13.5617

37.7674, 49.1176,
8.8745

93.1104, 58.0183,
14.7334

28.8173, 47.0627,
7.6685

106.0186, 59.4965,
15.9119

20.7131, 45.0141,
6.4198

119.4736, 60.8835,
17.0992

13.5545, 43.2018,
5.0932

133.4542, 62.1845,
18.2966

7.1430, 45.7393,
5.0001

147.9411, 63.4042,

0.0000, INF, NaN

19.5051

0.0000, NaN, NaN

162.9173, 64.5472,
20.7256

0.0000, NaN, NaN

■ 57.9263, 52.9914,
11.2266

■ 57.9263, 52.9914,
11.2266

■ 53.2482, 62.4585,
14.0340

■ 63.5587, 42.6375,
8.9890

■ 49.6491, 70.2725,
17.2803

■ 69.9992, 31.9824,
7.3352

■ 47.2060, 75.6399,
20.7043

■ 77.1187, 21.3685,
6.2207

■ 45.8849, 78.1443,
23.9451

■ 84.8063, 10.9706,
5.5748

■ 45.5740, 78.6188,
25.0149

■ 92.9719, 0.8559,
5.3237

99.6239, -6.6465,
4.9667

Harmonies

Analogous

The Analogous color harmony consists of three colors that are next to each other on the color wheel.



57.9278, 50.5376, -14.2100



57.9263, 52.9914, 11.2266



57.9278, 38.5864, 26.0289

Triad

The Triadic color harmony groups three colors that are evenly spaced from another and form a triangle on the color wheel.



57.9278, 52.9873, 11.2278



57.9278, -31.6642, 28.4070



57.9278, -18.2301, -60.0044

Complementary

The Complementary color scheme is a pair of colors which are on the opposite of each other on the color wheel.



57.9263, 52.9914, 11.2266



88.0515, -44.6592, 7.4096

Split Complementary

Split-complementary colors differ from the complementary color scheme. The scheme consists of three colors, the original color and two neighbors of the complement color.



57.9278, -35.5501, -36.1350



57.9263, 52.9914, 11.2266



57.9278, -42.3339, 16.3930

Square

The Square scheme is like the rectangle color scheme, but the four colors are evenly spaced on the color wheel.



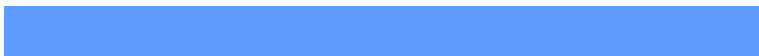
57.9278, 52.9873, 11.2278



57.9278, -11.9959, 32.7124



57.9278, -43.6221, -6.2825



57.9278, 6.3802, -63.3945

Rectangle

The Rectangle color scheme consists of four colors that form a rectangle on the color wheel.



57.9263, 52.9914, 11.2266



57.9278, 22.6122, 30.7962



57.9278, -43.6221, -6.2825



57.9278, -24.9762, -53.7451

Sweetspot

The Sweet Spot groups the original color and five complimentary colors.



57.9278, 52.9873, 11.2278



85.6655, 12.0505, 5.7148



57.7970, 61.4331, -56.9346



38.8893, 6.5520, 2.6923

0.0000, NaN, NaN



46.2646, -2.4686, 2.5136

Same Dimension

The Same Dimension uses a secret algorithm to generate beautiful new colors.



57.9278, 52.9873, 11.2278



53.8443, 64.3750, 14.5656



65.9043, 29.5648, 27.8541



41.5760, 1.9276, 2.4738



33.0676, 57.0954, 17.7536



10.1369, 17.6469, 4.3244

Inverse Universe

The Inverse Universe completely reimagines the original color for something new.



57.9278, 52.9873, 11.2278



53.8443, 64.3750, 14.5656



75.4288, -20.4184, -25.6177



41.5760, 1.9276, 2.4738



33.0676, 57.0954, 17.7536



10.1369, 17.6469, 4.3244

Previews

White Background



This preview shows how the HunterLab color 57.9263, 52.9914, 11.2266 looks on a white background.

Color Contrast Check

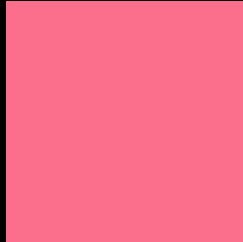
Large Text (above 18pt) WCAG AA × Fail

Any Text WCAG AA × Fail

Large Text (above 18pt) WCAG AAA × Fail

Any Text WCAG AAA × Fail

Black Background



This preview shows how the HunterLab color 57.9263, 52.9914, 11.2266 looks on a black background.

Color Contrast Check

Large Text (above 18pt) WCAG AA ✓ Pass

Any Text WCAG AA ✓ Pass

Large Text (above 18pt) WCAG AAA ✓ Pass

Any Text WCAG AAA ✓ Pass

If you want to check with other color combinations, try the [Color Contrast Checker](#).

HunterLab 57.9263, 52.9914, 11.2266 Background



This preview shows how black text looks on a background with the HunterLab color 57.9263, 52.9914, 11.2266.



This preview shows how white text looks on a background with the HunterLab color 57.9263, 52.9914,

Color Blindness Simulation

Color vision deficiency is a very complex topic, and I could not describe the different causes any better than Wikipedia does, so if you want to learn more, you should check out their [article about color blindness](#).

Dichromacy



Original Color

57.9263, 52.9914, 11.2266

Protanopia

58.1056, -0.9833, -0.5357

Deuteranopia

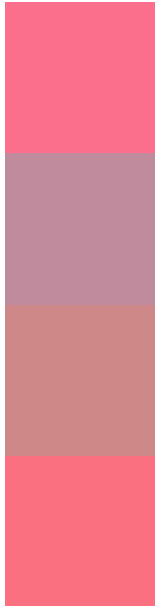
58.0090, 4.2024, 13.1381



Tritanopia

57.8919, 49.0962, 18.0062

Trichromacy



Original Color

57.9263, 52.9914, 11.2266

Protanomaly

56.6322, 17.4252, 2.2729

Deuteranomaly

57.0155, 21.3872, 11.2854

Tritanomaly

57.8540, 50.2920, 15.6008

Monochromacy



Original Color

57.9263, 52.9914, 11.2266

Achromatopsia

57.6586, -3.0765, 3.1327

Achromatomaly

56.3415, 16.1650, 4.6362

CSS Examples

Text

The CSS property to change the color of the text to HunterLab 57.9263, 52.9914, 11.2266 is called "color". The color property can be set on classes, ids or directly on the HTML element.

This example shows how text in the color `rgb(251, 110, 140)` looks like.

```
.text, #text, p{  
    color:rgb(251, 110, 140)  
}
```

If you want to add a text shadow in that color use the text-shadow property, you can generate a text shadow directly with our [CSS Text Shadow Generator](#).

Here you see how black text with a 4 pixel rgb(251, 110, 140) colored shadow looks like.

```
.shadow{ text-shadow: 4px 4px 2px rgb(251, 110, 140) }
```

Border

The CSS property to change the border of an element to HunterLab 57.9263, 52.9914, 11.2266 is called "border". The border property can be set on classes, ids or directly on the HTML element.

This example shows the color as border, it can be applied via the CSS property "border" or "border-color".

```
.border, #border, table{ border:4px solid rgb(251, 110, 140) }
```


If only the border color should be changed use the property border-color.

```
.border{ border-color:rgb(251, 110, 140) }
```

If you want to add a box shadow in that color use:

Here you see how a box with a 4 pixel rgb(251, 110, 140) colored shadow looks like.

```
.boxshadow{ -moz-box-shadow:4px 4px 4px  
4px rgb(251, 110, 140); -webkit-box-  
shadow:4px 4px 4px 4px rgb(251, 110, 140);  
box-shadow:4px 4px 4px 4px rgb(251, 110,  
140) }
```

Background

The CSS property to change the background color of an element to HunterLab 57.9263, 52.9914, 11.2266 is called "background". The background property can be set on classes, ids or directly on the HTML element.

```
.background, #background, body{  
background: rgb(251, 110, 140) }
```

If only the background color should be changed can be used:

```
.background{ background-color: rgb(251,  
110, 140) }
```

This example shows the color as background, it is applied via the CSS property "background".

To optimize and compress your CSS code, you can use our [online CSS compressor and optimizer](#) based on csstidy. If you want to create a linear or radial gradient as background or border, check our [CSS Gradient Generator](#).

Hey! You found this booklet interesting? Support Converting Colors with the new Membership Option!

The pro membership hides all ads, plus gives you double the colors in the color bucket, and more awesome pro features!

[Learn more, Memberships starting at \\$2.50/m!](#)

**Follow me
on Twitter!**

@ConvertingColor