

Converting Colors

HunterLab(57.9350, 15.1375,
12.1269)

Have a look what the booklet for
HunterLab(57.9350, 15.1375,
12.1269) contains.

HunterLab(57.9350, 15.1375, 12.1269)	3
<i>Conversions</i>	4
<i>Details</i>	6
<i>Harmonies</i>	12
<i>Previews</i>	24
<i>Color Blindness Simulation</i>	28
<i>CSS Examples</i>	31

Color

**HunterLab(57.9350, 15.1375,
12.1269)**

Conversions

Conversions Part 1

Format	Color
Hex	C78F88
RGB	199, 143, 136
RGB Percent	78%, 56%, 53%
CMY	0.2196, 0.4392, 0.4667
CMYK	0.00, 0.28, 0.32, 0.22
HSL	7°, 36%, 66%
HSV	7°, 32%, 78%
XYZ	37.8196, 33.5646, 27.7779
YIQ	158.9460, 35.6230, 9.6950

Conversions

Conversions Part 2

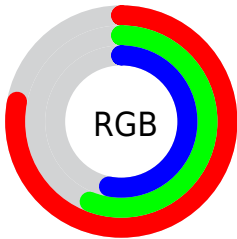
Format	Color
R_{YB}	199, 144, 136
Decimal	13078408
CIE _{Lab}	64.62, 20.28, 12.15
CIE _{LCh}	65, 23.636, 30.927
Yxy	33.5662, 0.3814, 0.3385
Android (android.graphics.Color)	4291268488 (0xFFC78F88)
YUV	158.9460, -11.3124, 35.1274
Hunter-Lab	57.9350, 15.1375, 12.1269

Details

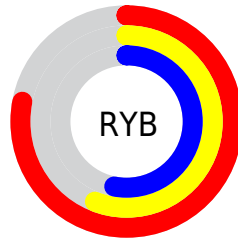
The HunterLab color **57.9350, 15.1375, 12.1269** is a light color, and the websafe version is hex **CC9999**. A complement of this color would be **68.5970, -17.7510, -4.7435**, and the grayscale version is **58.8952, -3.1425, 3.1999**.

A 20% lighter version of the original color is **80.5398, 15.0638, 14.4503**, and **37.7564, 14.3367, 9.6910** is the 20% darker color. If you saturate the color by 10%, you get **53.0596, 21.8138, 14.5793**, and if you desaturate by 10%, it is **63.1835, 8.7524, 9.6134**.

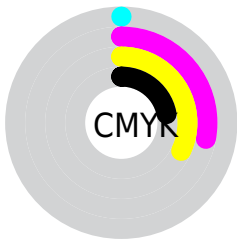
Distribution



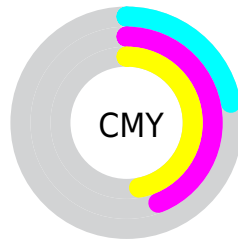
- Red (78%)
- Green (56%)
- Blue (53%)



- Red (78%)
- Yellow (56%)
- Blue (53%)



- Cyan (0%)
- Magenta (28%)
- Yellow (32%)
- Black (22%)



- Cyan (22%)
- Magenta (44%)
- Yellow (47%)

Brightness & Saturation Gradients

These gradients show how the HunterLab color 57.9350, 15.1375, 12.1269 changes by changing the brightness by 10 percent. The first figure shows a shift by +10% for each color and the second figure -10%.

Similar to the brightness gradients but the following saturation gradients show a change of the HunterLab color 57.9350, 15.1375, 12.1269 by changing the saturation by 10% instead.

■ 57.9350, 15.1375,
12.1269

■ 57.9350, 15.1375,
12.1269

178.3798, 16.2000,
23.3947

■ 47.4980, 14.6632,
10.8781

■ 80.7828, 15.8202,
14.6033

■ 37.7748, 14.0900,
9.6094

■ 93.1204, 16.0504,
15.8396

■ 28.8240, 13.4005,
8.3079

■ 106.0290, 16.2144,
17.0793

■ 20.7191, 12.5753,
6.9508

119.4845, 16.3176,
18.3249

■ 13.5598, 11.5918,
5.5013

133.4654, 16.3642,
19.5780

■ 7.1492, 12.1705,
5.0044

147.9528, 16.3581,

0.0000, NaN, NaN

20.8400

0.0000, NaN, NaN

162.9294, 16.3024,
22.1120

0.0000, NaN, NaN

■ 57.9350, 15.1375,
12.1269

■ 57.9350, 15.1375,
12.1269

■ 53.0596, 21.8138,
14.5793

■ 63.1835, 8.7524,
9.6134

■ 48.6185, 28.7229,
16.9067

■ 68.7468, 2.6788,
7.0731

■ 44.6886, 35.7107,
19.0176

■ 74.5819, -3.1008,
4.5276

■ 41.3513, 42.5050,
20.7861

■ 80.6530, -8.6144,
1.9876

■ 38.6834, 48.7025,
22.0690

■ 86.9308, -13.8941,
-0.5425

■ 36.7383, 53.8187,
22.7505

■ 93.3780, -19.0497,
-2.8652

■ 35.6661, 56.9103,
22.9736

■ 95.3321, -21.9762,
-0.4810

Harmonies

Analogous

The Analogous color harmony consists of three colors that are next to each other on the color wheel.



57.9364, 18.3556, 3.4614



57.9350, 15.1375, 12.1269



57.9364, 6.9778, 17.4742

Triad

The Triadic color harmony groups three colors that are evenly spaced from another and form a triangle on the color wheel.



57.9364, 15.1351, 12.1278



57.9364, -19.6034, 11.6803



57.9364, -2.7696, -19.3519

Complementary

The Complementary color scheme is a pair of colors which are on the opposite of each other on the color wheel.



57.9350, 15.1375, 12.1269



68.5970, -17.7510, -4.7435

Split Complementary

Split-complementary colors differ from the complementary color scheme. The scheme consists of three colors, the original color and two neighbors of the complement color.



57.9364, -12.5224, -16.1239



57.9350, 15.1375, 12.1269



57.9364, -21.8166, 2.8441

Square

The Square scheme is like the rectangle color scheme, but the four colors are evenly spaced on the color wheel.



57.9364, 15.1351, 12.1278



57.9364, -13.0469, 17.2498



57.9364, -19.3161, -7.5346



57.9364, 7.5787, -15.7177

Rectangle

The Rectangle color scheme consists of four colors that form a rectangle on the color wheel.



57.9350, 15.1375, 12.1269



57.9364, 0.1026, 19.0085



57.9364, -19.3161, -7.5346



57.9364, -6.2236, -19.0291

Sweetspot

The Sweet Spot groups the original color and five complimentary colors.



57.9364, 15.1351, 12.1278



92.8858, 1.5776, 8.5085



57.9549, 27.7836, -15.2373



42.4532, 1.2604, 4.1665

0.0000, NaN, NaN



46.2646, -2.4686, 2.5136

Same Dimension

The Same Dimension uses a secret algorithm to generate beautiful new colors.



57.9364, 15.1351, 12.1278



72.1531, 26.0863, 18.2990



66.4190, -0.4167, 20.1269



32.8993, 0.6285, 3.0497



28.7140, 45.2597, 18.4858



6.7517, 8.2828, 4.3054

Inverse Universe

The Inverse Universe completely reimagines the original color for something new.



68.5970, -17.7510, -4.7435



89.0715, -26.4378, -8.5525



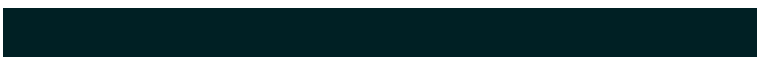
59.0914, -2.9931, -17.8552



34.4360, -4.0623, 0.6293



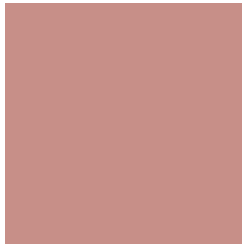
47.8743, -21.2798, -13.9018



10.6965, -4.9820, -2.6151

Previews

White Background



This preview shows how the HunterLab color 57.9350, 15.1375, 12.1269 looks on a white background.

Color Contrast Check

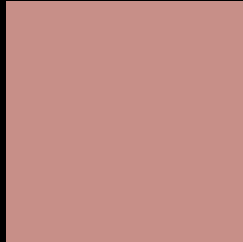
Large Text (above 18pt) WCAG AA × Fail

Any Text WCAG AA × Fail

Large Text (above 18pt) WCAG AAA × Fail

Any Text WCAG AAA × Fail

Black Background



This preview shows how the HunterLab color 57.9350, 15.1375, 12.1269 looks on a black background.

Color Contrast Check

Large Text (above 18pt) WCAG AA ✓ Pass

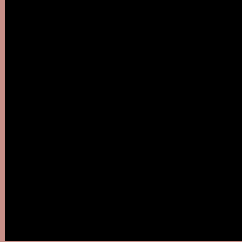
Any Text WCAG AA ✓ Pass

Large Text (above 18pt) WCAG AAA ✓ Pass

Any Text WCAG AAA ✓ Pass

If you want to check with other color combinations, try the [Color Contrast Checker](#).

HunterLab 57.9350, 15.1375, 12.1269 Background



This preview shows how black text looks on a background with the HunterLab color 57.9350, 15.1375, 12.1269.



This preview shows how white text looks on a background with the HunterLab color 57.9350, 15.1375,

Color Blindness Simulation

Color vision deficiency is a very complex topic, and I could not describe the different causes any better than Wikipedia does, so if you want to learn more, you should check out their [article about color blindness](#).

Dichromacy



Original Color

57.9350, 15.1375, 12.1269

Protanopia

58.2097, -3.3735, 9.3406

Deuteranopia

57.9290, 3.9821, 12.6812



Tritanopia

58.0531, 18.9325, 6.2015

Trichromacy



Original Color

57.9350, 15.1375, 12.1269

Protanomaly

57.9483, 2.9102, 10.3730

Deuteranomaly

57.8739, 8.0792, 12.3205

Tritanomaly

58.0523, 17.3445, 8.3013

Monochromacy



Original Color

57.9350, 15.1375, 12.1269

Achromatopsia

58.8816, -3.1418, 3.1991

Achromatomaly

58.3228, 3.3182, 6.2326

CSS Examples

Text

The CSS property to change the color of the text to HunterLab 57.9350, 15.1375, 12.1269 is called "color". The color property can be set on classes, ids or directly on the HTML element.

This example shows how text in the color `rgb(199, 143, 136)` looks like.

```
.text, #text, p{  
    color:rgb(199, 143, 136)  
}
```

If you want to add a text shadow in that color use the text-shadow property, you can generate a text shadow directly with our [CSS Text Shadow Generator](#).

Here you see how black text with a 4 pixel rgb(199, 143, 136) colored shadow looks like.

```
.shadow{ text-shadow: 4px 4px 2px rgb(199, 143, 136) }
```

Border

The CSS property to change the border of an element to HunterLab 57.9350, 15.1375, 12.1269 is called "border". The border property can be set on classes, ids or directly on the HTML element.

This example shows the color as border, it can be applied via the CSS property "border" or "border-color".

```
.border, #border, table{ border:4px solid rgb(199, 143, 136) }
```


If only the border color should be changed use the property `border-color`.

```
.border{ border-color:rgb(199, 143, 136) }
```

If you want to add a box shadow in that color use:

Here you see how a box with a 4 pixel `rgb(199, 143, 136)` colored shadow looks like.

```
.boxshadow{ -moz-box-shadow:4px 4px 4px  
4px rgb(199, 143, 136); -webkit-box-  
shadow:4px 4px 4px 4px rgb(199, 143, 136);  
box-shadow:4px 4px 4px 4px rgb(199, 143,  
136) }
```

Background

The CSS property to change the background color of an element to HunterLab 57.9350, 15.1375, 12.1269 is called "background". The background property can be set on classes, ids or directly on the HTML element.

```
.background, #background, body{  
background: rgb(199, 143, 136) }
```

If only the background color should be changed can be used:

```
.background{ background-color: rgb(199,  
143, 136) }
```

This example shows the color as background, it is applied via the CSS property "background".

To optimize and compress your CSS code, you can use our [online CSS compressor and optimizer](#) based on csstidy. If you want to create a linear or radial gradient as background or border, check our [CSS Gradient Generator](#).

Hey! You found this booklet interesting? Support Converting Colors with the new Membership Option!

The pro membership hides all ads, plus gives you double the colors in the color bucket, and more awesome pro features!

[Learn more, Memberships starting at \\$2.50/m!](#)

**Follow me
on Twitter!**

@ConvertingColor