

Converting Colors

HunterLab(57.9406, 7.5524,
8.5910)

Have a look what the booklet for
HunterLab(57.9406, 7.5524, 8.5910)
contains.

HunterLab(57.9711, 7.5105, 8.4555)	3
<i>Conversions</i>	4
<i>Details</i>	6
<i>Harmonies</i>	12
<i>Previews</i>	24
<i>Color Blindness Simulation</i>	28
<i>CSS Examples</i>	31

Color

**HunterLab(57.9711, 7.5105,
8.4555)**

Conversions

Conversions Part 1

Format	Color
Hex	B79591
RGB	183, 149, 145
RGB Percent	72%, 58%, 57%
CMY	0.2824, 0.4157, 0.4314
CMYK	0.00, 0.19, 0.21, 0.28
HSL	6°, 21%, 64%
HSV	6°, 21%, 72%
XYZ	35.3867, 33.6065, 31.4097
YIQ	158.7100, 21.5480, 5.9640

Conversions

Conversions Part 2

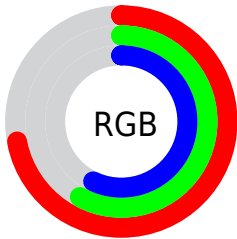
Format	Color
R_{YB}	183, 149, 145
Decimal	12031377
CIE _{Lab}	64.65, 12.07, 6.90
CIE _{LCh}	65, 13.904, 29.762
Yxy	33.6080, 0.3524, 0.3347
Android (android.graphics.Color)	4290221457 (0xFFB79591)
YUV	158.7100, -6.7590, 21.3023
Hunter-Lab	57.9711, 7.5105, 8.4555

Details

The HunterLab color $57.9711, 7.5105, 8.4555$ is a light color, and the websafe version is hex $CC9999$. A complement of this color would be $64.5583, -12.4879, -1.5821$, and the grayscale version is $58.7848, -3.1366, 3.1939$.

A 20% lighter version of the original color is $80.7379, 7.4139, 10.2010$, and $37.7210, 7.2722, 6.3537$ is the 20% darker color. If you saturate the color by 10%, you get $53.1662, 13.3119, 10.7162$, and if you desaturate by 10%, it is $63.0625, 1.9830, 6.1829$.

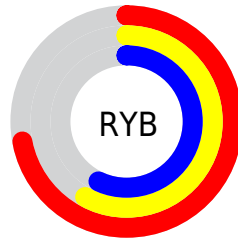
Distribution



Red (72%)

Green (58%)

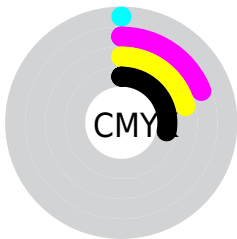
Blue (57%)



Red (72%)

Yellow (58%)

Blue (57%)

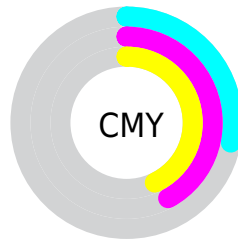


Cyan (0%)

Magenta (19%)

Yellow (21%)

Black (28%)



Cyan (28%)

Magenta (42%)

Yellow (43%)

Brightness & Saturation Gradients

These gradients show how the HunterLab color 57.9711, 7.5105, 8.4555 changes by changing the brightness by 10 percent. The first figure shows a shift by +10% for each color and the second figure -10%.

Similar to the brightness gradients but the following saturation gradients show a change of the HunterLab color 57.9711, 7.5105, 8.4555 by changing the saturation by 10% instead.

■ 57.9711, 7.5105,
8.4555

■ 57.9711, 7.5105,
8.4555

178.4322, 5.6183,
17.6303

■ 47.5317, 7.4353,
7.5133

■ 80.8230, 7.4496,
10.3807

■ 37.8061, 7.2816,
6.5787

■ 93.1626, 7.3305,
11.3654

■ 28.8526, 7.0351,
5.6471

106.0731, 7.1583,
12.3664

■ 20.7447, 6.6781,
4.7088

119.5304, 6.9369,
13.3843

■ 13.5820, 6.1850,
3.7457

133.5130, 6.6696,
14.4195

■ 7.1750, 6.9471,
4.3780

148.0020, 6.3591,

0.0000, NaN, NaN

15.4722

0.0000, NaN, NaN

162.9803, 6.0080,
16.5424

0.0000, NaN, NaN

■ 57.9711, 7.5105,
8.4555

■ 57.9711, 7.5105,
8.4555

■ 53.1662, 13.3119,
10.7162

■ 63.0625, 1.9830,
6.1829

■ 48.6924, 19.3835,
12.9317

■ 68.3968, -3.2795,
3.9120

■ 44.6096, 25.6680,
15.0516

■ 73.9433, -8.3045,
1.6518

■ 40.9859, 32.0348,
16.9964

■ 79.6761, -13.1210,
-0.5949

■ 37.8952, 38.2460,
18.6557

■ 85.5738, -17.7575,
-2.8282

■ 35.4086, 43.9436,
19.8991

■ 91.6193, -22.2402,
-5.0494

■ 33.5776, 48.6896,
20.6135

■ 94.2376, -26.0019,
-1.9093

■ 32.4694, 51.8429,
20.9151

Harmonies

Analogous

The Analogous color harmony consists of three colors that are next to each other on the color wheel.



57.9724, 9.1836, 3.1089



57.9711, 7.5105, 8.4555



57.9724, 2.9675, 12.0410

Triad

The Triadic color harmony groups three colors that are evenly spaced from another and form a triangle on the color wheel.



57.9724, 7.5085, 8.4564



57.9724, -12.9441, 8.5294



57.9724, -3.1454, -9.2310

Complementary

The Complementary color scheme is a pair of colors which are on the opposite of each other on the color wheel.



57.9711, 7.5105, 8.4555



64.5583, -12.4879, -1.5821

Split Complementary

Split-complementary colors differ from the complementary color scheme. The scheme consists of three colors, the original color and two neighbors of the complement color.



57.9724, -8.9208, -7.4056



57.9711, 7.5105, 8.4555



57.9724, -14.4323, 3.2022

Square

The Square scheme is like the rectangle color scheme, but the four colors are evenly spaced on the color wheel.



57.9724, 7.5085, 8.4564



57.9724, -8.8392, 12.0799



57.9724, -12.9898, -2.6985



57.9724, 2.8791, -7.4607

Rectangle

The Rectangle color scheme consists of four colors that form a rectangle on the color wheel.



57.9711, 7.5105, 8.4555



57.9724, -0.9838, 13.1521



57.9724, -12.9898, -2.6985



57.9724, -5.1791, -9.0151

Sweetspot

The Sweet Spot groups the original color and five complimentary colors.



57.9724, 7.5085, 8.4564



87.6876, -0.6739, 6.8552



57.9493, 15.0573, -7.7716



40.9935, -0.1017, 3.3143



96.5975, -5.1542, 5.2483



43.2801, -2.3093, 2.3515

Same Dimension

The Same Dimension uses a secret algorithm to generate beautiful new colors.



57.9724, 7.5085, 8.4564



74.5422, 13.6122, 12.7270



63.2799, -1.8418, 13.8611



30.2662, 0.5775, 2.7790



27.2127, 42.9931, 17.5210



5.5833, 6.6086, 3.5561

Inverse Universe

The Inverse Universe completely reimagines the original color for something new.



64.5583, -12.4879, -1.5821



85.2466, -18.9698, -3.6084



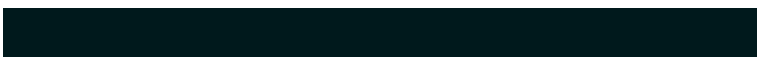
58.8643, -3.4583, -8.9126



31.6932, -3.7395, 0.6077



45.7136, -20.5731, -12.7266



8.8510, -4.1984, -1.9998

Previews

White Background



This preview shows how the HunterLab color 57.9711, 7.5105, 8.4555 looks on a white background.

Color Contrast Check

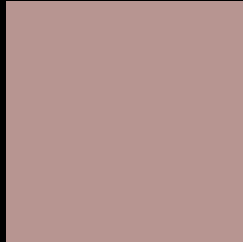
Large Text (above 18pt) WCAG AA × Fail

Any Text WCAG AA × Fail

Large Text (above 18pt) WCAG AAA × Fail

Any Text WCAG AAA × Fail

Black Background



This preview shows how the HunterLab color 57.9711, 7.5105, 8.4555 looks on a black background.

Color Contrast Check

Large Text (above 18pt) WCAG AA ✓ Pass

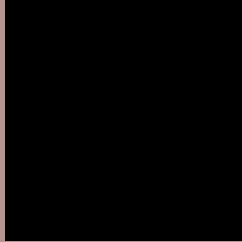
Any Text WCAG AA ✓ Pass

Large Text (above 18pt) WCAG AAA ✓ Pass

Any Text WCAG AAA ✓ Pass

If you want to check with other color combinations, try the [Color Contrast Checker](#).

HunterLab 57.9711, 7.5105, 8.4555 Background



This preview shows how black text looks on a background with the HunterLab color 57.9711, 7.5105, 8.4555.



This preview shows how white text looks on a background with the HunterLab color 57.9711, 7.5105,

8.4555.

Color Blindness Simulation

Color vision deficiency is a very complex topic, and I could not describe the different causes any better than Wikipedia does, so if you want to learn more, you should check out their [article about color blindness](#).

Dichromacy



Original Color

57.9711, 7.5105, 8.4555

Protanopia

57.9899, -2.3249, 6.6211

Deuteranopia

57.9005, 4.4442, 8.3249



Tritanopia

58.0089, 11.1463, 2.8778

Trichromacy



Original Color

57.9711, 7.5105, 8.4555

Protanomaly

57.8504, 1.5541, 6.9601

Deuteranomaly

57.8280, 5.6258, 8.2665

Tritanomaly

58.0259, 9.5269, 5.1286

Monochromacy



Original Color

57.9711, 7.5105, 8.4555

Achromatopsia

58.8816, -3.1418, 3.1991

Achromatomaly

58.3957, 0.8270, 4.9576

CSS Examples

Text

The CSS property to change the color of the text to HunterLab 57.9711, 7.5105, 8.4555 is called "color". The color property can be set on classes, ids or directly on the HTML element.

This example shows how text in the color `rgb(183, 149, 145)` looks like.

```
.text, #text, p{  
    color:rgb(183, 149, 145)  
}
```

If you want to add a text shadow in that color use the text-shadow property, you can generate a text shadow directly with our [CSS Text Shadow Generator](#).

Here you see how black text with a 4 pixel rgb(183, 149, 145) colored shadow looks like.

```
.shadow{ text-shadow: 4px 4px 2px rgb(183, 149, 145) }
```

Border

The CSS property to change the border of an element to HunterLab 57.9711, 7.5105, 8.4555 is called "border". The border property can be set on classes, ids or directly on the HTML element.

This example shows the color as border, it can be applied via the CSS property "border" or "border-color".

```
.border, #border, table{ border:4px solid rgb(183, 149, 145) }
```


If only the border color should be changed use the property `border-color`.

```
.border{ border-color:rgb(183, 149, 145) }
```

If you want to add a box shadow in that color use:

Here you see how a box with a 4 pixel `rgb(183, 149, 145)` colored shadow looks like.

```
.boxshadow{ -moz-box-shadow:4px 4px 4px  
4px rgb(183, 149, 145); -webkit-box-  
shadow:4px 4px 4px 4px rgb(183, 149, 145);  
box-shadow:4px 4px 4px 4px rgb(183, 149,  
145) }
```

Background

The CSS property to change the background color of an element to HunterLab 57.9711, 7.5105, 8.4555 is called "background". The background property can be set on classes, ids or directly on the HTML element.

```
.background, #background, body{  
background: rgb(183, 149, 145) }
```

If only the background color should be changed can be used:

```
.background{ background-color: rgb(183,  
149, 145) }
```

This example shows the color as background, it is applied via the CSS property "background".

To optimize and compress your CSS code, you can use our [online CSS compressor and optimizer](#) based on csstidy. If you want to create a linear or radial gradient as background or border, check our [CSS Gradient Generator](#).

Hey! You found this booklet interesting? Support Converting Colors with the new Membership Option!

The pro membership hides all ads, plus gives you double the colors in the color bucket, and more awesome pro features!

[Learn more, Memberships starting at \\$2.50/m!](#)

**Follow me
on Twitter!**

@ConvertingColor