

Converting Colors

HunterLab(57.9936, 13.0979,
8.5778)

Have a look what the booklet for
HunterLab(57.9936, 13.0979,
8.5778) contains.

HunterLab(57.9936, 13.0979, 8.5778)	3
<i>Conversions</i>	4
<i>Details</i>	6
<i>Harmonies</i>	12
<i>Previews</i>	24
<i>Color Blindness Simulation</i>	28
<i>CSS Examples</i>	31

Color

**HunterLab(57.9936, 13.0979,
8.5778)**

Conversions

Conversions Part 1

Format	Color
Hex	C19191
RGB	193, 145, 145
RGB Percent	76%, 57%, 57%
CMY	0.2431, 0.4314, 0.4314
CMYK	0.00, 0.25, 0.25, 0.24
HSL	0°, 28%, 66%
HSV	0°, 25%, 76%
XYZ	37.2285, 33.6326, 31.3176
YIQ	159.3520, 28.6080, 10.1760

Conversions

Conversions Part 2

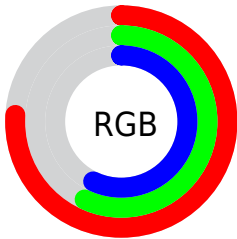
Format	Color
RYB	193, 145, 145
Decimal	12685713
CIELab	64.67, 18.12, 7.07
CIELCh	65, 19.445, 21.312
Yxy	33.6341, 0.3643, 0.3292
Android (android.graphics.Color)	4290875793 (0xFFC19191)
YUV	159.3520, -7.0755, 29.5093
Hunter-Lab	57.9936, 13.0979, 8.5778

Details

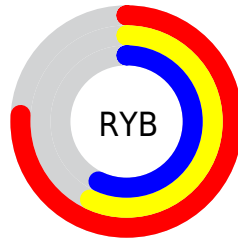
The HunterLab color **57.9936, 13.0979, 8.5778** is a light color, and the websafe version is hex **CC9999**. A complement of this color would be **69.2882, -17.2478, -0.7790**, and the grayscale version is **59.0462, -3.1506, 3.2081**.

A 20% lighter version of the original color is **80.8049, 13.5689, 10.3830**, and **37.7292, 12.2710, 6.4500** is the 20% darker color. If you saturate the color by 10%, you get **52.6145, 20.4314, 10.6493**, and if you desaturate by 10%, it is **63.7874, 6.0437, 6.6330**.

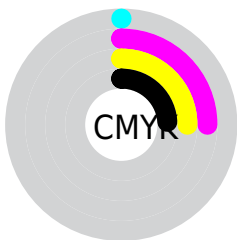
Distribution



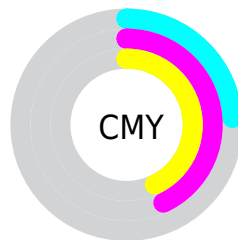
- Red (76%)
- Green (57%)
- Blue (57%)



- Red (76%)
- Yellow (57%)
- Blue (57%)



- Cyan (0%)
- Magenta (25%)
- Yellow (25%)
- Black (24%)



- Cyan (24%)
- Magenta (43%)
- Yellow (43%)

Brightness & Saturation Gradients

These gradients show how the HunterLab color 57.9936, 13.0979, 8.5778 changes by changing the brightness by 10 percent. The first figure shows a shift by +10% for each color and the second figure -10%.

Similar to the brightness gradients but the following saturation gradients show a change of the HunterLab color 57.9936, 13.0979, 8.5778 by changing the saturation by 10% instead.

■ 57.9936, 13.0979,
8.5778

■ 57.9936, 13.0979,
8.5778

178.4650, 13.3913,
17.8176

■ 47.5528, 12.7266,
7.6262

■ 80.8482, 13.5880,
10.5201

■ 37.8256, 12.2612,
6.6814

■ 93.1890, 13.7274,
11.5125

■ 28.8705, 11.6847,
5.7385

106.1006, 13.8039,
12.5209

■ 20.7607, 10.9775,
4.7876

119.5590, 13.8225,
13.5459

■ 13.5959, 10.1147,
3.8097

133.5428, 13.7872,
14.5879

■ 7.1911, 10.6770,
4.4652

148.0328, 13.7016,

0.0000, NaN, NaN

15.6471

0.0000, NaN, NaN

163.0121, 13.5688,
16.7236

0.0000, NaN, NaN

■ 57.9936, 13.0979,
8.5778

■ 57.9936, 13.0979,
8.5778

■ 52.6145, 20.4314,
10.6493

■ 63.7874, 6.0437,
6.6330

■ 47.7271, 27.9710,
12.8236

■ 69.9266, -0.7103,
4.8120

■ 43.4297, 35.5208,
15.0437

■ 76.3606, -7.1847,
3.1060

■ 39.8294, 42.7217,
17.1970

■ 83.0485, -13.4115,
1.5012

■ 37.0285, 49.0356,
19.1105

■ 89.9577, -19.4256,
-0.0163

■ 35.0948, 53.8445,
20.5820

■ 94.9092, -23.5260,
-1.0310

■ 34.0212, 56.7002,
21.4609

■ 33.6717, 57.6613,
21.7578

Harmonies

Analogous

The Analogous color harmony consists of three colors that are next to each other on the color wheel.



57.9949, 14.1387, 0.7344



57.9936, 13.0979, 8.5778



57.9949, 7.5855, 14.1248

Triad

The Triadic color harmony groups three colors that are evenly spaced from another and form a triangle on the color wheel.



57.9949, 13.0957, 8.5788



57.9949, -15.4280, 12.1395



57.9949, -5.5701, -14.6097

Complementary

The Complementary color scheme is a pair of colors which are on the opposite of each other on the color wheel.



57.9936, 13.0979, 8.5778



69.2882, -17.2478, -0.7790

Split Complementary

Split-complementary colors differ from the complementary color scheme. The scheme consists of three colors, the original color and two neighbors of the complement color.



57.9949, -13.0593, -10.4862



57.9936, 13.0979, 8.5778



57.9949, -18.5297, 5.4791

Square

The Square scheme is like the rectangle color scheme, but the four colors are evenly spaced on the color wheel.



57.9949, 13.0957, 8.5788



57.9949, -8.9758, 15.9631



57.9949, -17.6885, -2.8451



57.9949, 3.0246, -13.4601

Rectangle

The Rectangle color scheme consists of four colors that form a rectangle on the color wheel.



57.9936, 13.0979, 8.5778



57.9949, 2.2869, 16.1486



57.9949, -17.6885, -2.8451



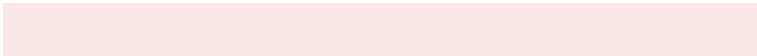
57.9949, -8.2925, -13.7748

Sweetspot

The Sweet Spot groups the original color and five complimentary colors.



57.9949, 13.0957, 8.5788



91.7051, 1.0400, 6.9717



59.5306, 20.9881, -13.1985



42.2423, 0.7326, 3.2964



98.8636, -5.2751, 5.3714



45.2661, -2.4153, 2.4594

Same Dimension

The Same Dimension uses a secret algorithm to generate beautiful new colors.



57.9949, 13.0957, 8.5788



73.5071, 22.9807, 13.0129



64.6205, 0.9727, 15.2571



31.7459, 1.0845, 2.6563



27.4609, 47.0251, 17.7445



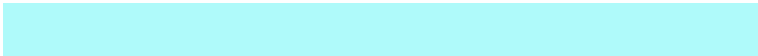
5.7085, 9.7735, 3.6887

Inverse Universe

The Inverse Universe completely reimagines the original color for something new.



69.2882, -17.2478, -0.7790



91.8189, -26.4356, -2.2325



61.8436, -5.7881, -10.3626



33.8058, -4.4129, 0.9620



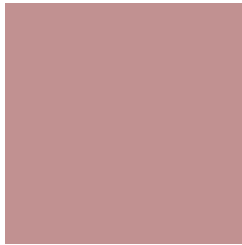
52.8432, -28.0122, -5.5791



10.9844, -5.8229, -1.1594

Previews

White Background



This preview shows how the HunterLab color 57.9936, 13.0979, 8.5778 looks on a white background.

Color Contrast Check

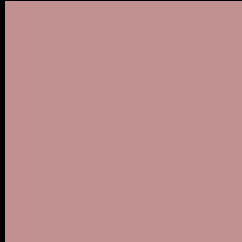
Large Text (above 18pt) WCAG AA × Fail

Any Text WCAG AA × Fail

Large Text (above 18pt) WCAG AAA × Fail

Any Text WCAG AAA × Fail

Black Background



This preview shows how the HunterLab color 57.9936, 13.0979, 8.5778 looks on a black background.

Color Contrast Check

Large Text (above 18pt) WCAG AA ✓ Pass

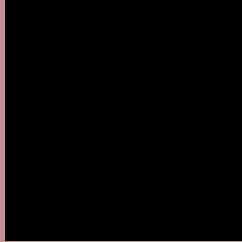
Any Text WCAG AA ✓ Pass

Large Text (above 18pt) WCAG AAA ✓ Pass

Any Text WCAG AAA ✓ Pass

If you want to check with other color combinations, try the [Color Contrast Checker](#).

HunterLab 57.9936, 13.0979, 8.5778 Background



This preview shows how black text looks on a background with the HunterLab color 57.9936, 13.0979, 8.5778.



This preview shows how white text looks on a background with the HunterLab color 57.9936, 13.0979,

Color Blindness Simulation

Color vision deficiency is a very complex topic, and I could not describe the different causes any better than Wikipedia does, so if you want to learn more, you should check out their [article about color blindness](#).

Dichromacy



Original Color

57.9936, 13.0979, 8.5778

Protanopia

57.9555, -2.3329, 5.7187

Deuteranopia

58.1526, 3.8050, 8.9983



Tritanopia

58.1226, 15.4101, 4.4515

Trichromacy



Original Color

57.9936, 13.0979, 8.5778

Protanomaly

57.8884, 3.1855, 6.6041

Deuteranomaly

57.9446, 7.3701, 8.8360

Tritanomaly

58.0088, 14.8222, 6.0794

Monochromacy



Original Color

57.9936, 13.0979, 8.5778

Achromatopsia

58.8816, -3.1418, 3.1991

Achromatomaly

58.3971, 2.2906, 4.9848

CSS Examples

Text

The CSS property to change the color of the text to HunterLab 57.9936, 13.0979, 8.5778 is called "color". The color property can be set on classes, ids or directly on the HTML element.

This example shows how text in the color `rgb(193, 145, 145)` looks like.

```
.text, #text, p{  
    color:rgb(193, 145, 145)  
}
```

If you want to add a text shadow in that color use the text-shadow property, you can generate a text shadow directly with our [CSS Text Shadow Generator](#).

Here you see how black text with a 4 pixel rgb(193, 145, 145) colored shadow looks like.

```
.shadow{ text-shadow: 4px 4px 2px rgb(193, 145, 145) }
```

Border

The CSS property to change the border of an element to HunterLab 57.9936, 13.0979, 8.5778 is called "border". The border property can be set on classes, ids or directly on the HTML element.

This example shows the color as border, it can be applied via the CSS property "border" or "border-color".

```
.border, #border, table{ border:4px solid rgb(193, 145, 145) }
```


If only the border color should be changed use the property `border-color`.

```
.border{ border-color:rgb(193, 145, 145) }
```

If you want to add a box shadow in that color use:

Here you see how a box with a 4 pixel `rgb(193, 145, 145)` colored shadow looks like.

```
.boxshadow{ -moz-box-shadow:4px 4px 4px  
4px rgb(193, 145, 145); -webkit-box-  
shadow:4px 4px 4px 4px rgb(193, 145, 145);  
box-shadow:4px 4px 4px 4px rgb(193, 145,  
145) }
```

Background

The CSS property to change the background color of an element to HunterLab 57.9936, 13.0979, 8.5778 is called "background". The background property can be set on classes, ids or directly on the HTML element.

```
.background, #background, body{  
background: rgb(193, 145, 145) }
```

If only the background color should be changed can be used:

```
.background{ background-color: rgb(193,  
145, 145) }
```

This example shows the color as background, it is applied via the CSS property "background".

To optimize and compress your CSS code, you can use our [online CSS compressor and optimizer](#) based on csstidy. If you want to create a linear or radial gradient as background or border, check our [CSS Gradient Generator](#).

Hey! You found this booklet interesting? Support Converting Colors with the new Membership Option!

The pro membership hides all ads, plus gives you double the colors in the color bucket, and more awesome pro features!

[Learn more, Memberships starting at \\$2.50/m!](#)

**Follow me
on Twitter!**

@ConvertingColor