

Converting Colors

HunterLab(58.0479, 37.2519,
11.7635)

Have a look what the booklet for
HunterLab(58.0479, 37.2519,
11.7635) contains.

HunterLab(58.0155, 37.5418, 11.8332)	3
<i>Conversions</i>	4
<i>Details</i>	6
<i>Harmonies</i>	12
<i>Previews</i>	24
<i>Color Blindness Simulation</i>	28
<i>CSS Examples</i>	31

Color

**HunterLab(58.0155, 37.5418,
11.8332)**

Conversions

Conversions Part 1

Format	Color
Hex	E87D8A
RGB	232, 125, 138
RGB Percent	91%, 49%, 54%
CMY	0.0902, 0.5098, 0.4588
CMYK	0.00, 0.46, 0.41, 0.09
HSL	353°, 70%, 70%
HSV	353°, 46%, 91%
XYZ	45.1997, 33.6580, 28.1590
YIQ	158.4750, 59.5990, 26.7270

Conversions

Conversions Part 2

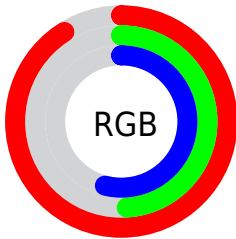
Format	Color
R_{YB}	232, 125, 138
Decimal	15236490
CIE _{Lab}	64.69, 42.47, 11.70
CIE _{LCh}	65, 44.050, 15.402
Yxy	33.6597, 0.4224, 0.3145
Android (android.graphics.Color)	4293426570 (0xFFE87D8A)
YUV	158.4750, -10.0942, 64.4814
Hunter-Lab	58.0155, 37.5418, 11.8332

Details

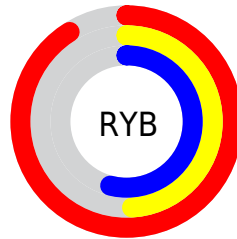
The HunterLab color **58.0155, 37.5418, 11.8332** is a light color, and the websafe version is hex **FF9999**. A complement of this color would be **81.9685, -34.3397, 1.4288**, and the grayscale version is **58.6913, -3.1316, 3.1888**.

A 20% lighter version of the original color is **75.9369, 24.5214, 8.7364**, and **37.8865, 34.4176, 9.4998** is the 20% darker color. If you saturate the color by 10%, you get **52.8389, 46.9108, 14.2814**, and if you desaturate by 10%, it is **63.9393, 27.9867, 9.7328**.

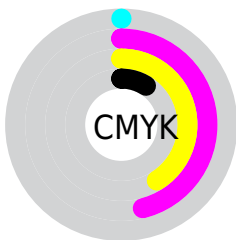
Distribution



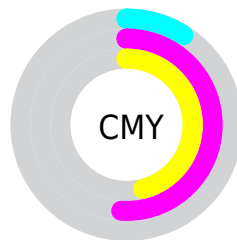
- Red (91%)
- Green (49%)
- Blue (54%)



- Red (91%)
- Yellow (49%)
- Blue (54%)



- Cyan (0%)
- Magenta (46%)
- Yellow (41%)
- Black (9%)



- Cyan (9%)
- Magenta (51%)
- Yellow (46%)

Brightness & Saturation Gradients

These gradients show how the HunterLab color 58.0155, 37.5418, 11.8332 changes by changing the brightness by 10 percent. The first figure shows a shift by +10% for each color and the second figure -10%.

Similar to the brightness gradients but the following saturation gradients show a change of the HunterLab color 58.0155, 37.5418, 11.8332 by changing the saturation by 10% instead.

■ 58.0155, 37.5418,
11.8332

■ 58.0155, 37.5418,
11.8332

178.4970, 45.9916,
22.9193

■ 47.5734, 36.1286,
10.6116

■ 80.8728, 40.0268,
14.2616

■ 37.8447, 34.5992,
9.3724

■ 93.2148, 41.1211,
15.4759

■ 28.8879, 32.9489,
8.1037

■ 106.1276, 42.1250,
16.6949

■ 20.7764, 31.1943,
6.7840

119.5871, 43.0451,
17.9207

■ 13.6095, 29.4118,
5.3748

133.5719, 43.8870,
19.1549

■ 7.2068, 30.3654,
5.0448

148.0629, 44.6558,

0.0000, INF, NaN

20.3989

0.0000, NaN, NaN

163.0431, 45.3560,
21.6534

0.0000, NaN, NaN

■ 58.0155, 37.5418,
11.8332

■ 58.0155, 37.5418,
11.8332

■ 52.8389, 46.9108,
14.2814

■ 63.9393, 27.9867,
9.7328

■ 48.5372, 55.5990,
16.9965

■ 70.4845, 18.5503,
7.9871

■ 45.2335, 62.8988,
19.8063

■ 77.5502, 9.3695,
6.5711

■ 43.0002, 68.0729,
22.4458

■ 85.0534, 0.4905,
5.4449

■ 41.8082, 70.7018,
24.6227

■ 92.9281, -8.0905,
4.5665

■ 41.5216, 71.3110,
25.2493

■ 97.9264, -12.6262,
2.8400

Harmonies

Analogous

The Analogous color harmony consists of three colors that are next to each other on the color wheel.



58.0170, 37.7094, -6.5432



58.0155, 37.5418, 11.8332



58.0170, 25.5643, 23.2081

Triad

The Triadic color harmony groups three colors that are evenly spaced from another and form a triangle on the color wheel.



58.0170, 37.5384, 11.8343



58.0170, -27.3991, 22.9956



58.0170, -12.2270, -42.8959

Complementary

The Complementary color scheme is a pair of colors which are on the opposite of each other on the color wheel.



58.0155, 37.5418, 11.8332



81.9685, -34.3397, 1.4288

Split Complementary

Split-complementary colors differ from the complementary color scheme. The scheme consists of three colors, the original color and two neighbors of the complement color.



58.0170, -27.0917, -28.3143



58.0155, 37.5418, 11.8332



58.0170, -35.0356, 11.4281

Square

The Square scheme is like the rectangle color scheme, but the four colors are evenly spaced on the color wheel.



58.0170, 37.5384, 11.8343



58.0170, -12.7010, 28.0522



58.0170, -34.9311, -7.1073



58.0170, 7.1716, -42.6757

Rectangle

The Rectangle color scheme consists of four colors that form a rectangle on the color wheel.



58.0155, 37.5418, 11.8332



58.0170, 13.3036, 27.0868



58.0170, -34.9311, -7.1073



58.0170, -17.8598, -39.3959

Sweetspot

The Sweet Spot groups the original color and five complimentary colors.



58.0170, 37.5384, 11.8343



88.0010, 8.3807, 7.0339



59.4639, 48.2323, -38.6348



39.8936, 4.8829, 3.3923

0.0000, NaN, NaN



46.2646, -2.4686, 2.5136

Same Dimension

The Same Dimension uses a secret algorithm to generate beautiful new colors.



58.0170, 37.5384, 11.8343



59.2660, 51.3715, 15.6579



67.2849, 15.6888, 24.6367



37.9425, 1.5703, 2.6628



30.9531, 53.1912, 18.5813



8.4698, 14.6651, 4.2307

Inverse Universe

The Inverse Universe completely reimagines the original color for something new.



58.0170, 37.5384, 11.8343



59.2660, 51.3715, 15.6579



69.4439, -13.4591, -22.6257



37.9425, 1.5703, 2.6628



30.9531, 53.1912, 18.5813



8.4698, 14.6651, 4.2307

Previews

White Background



This preview shows how the HunterLab color 58.0155, 37.5418, 11.8332 looks on a white background.

Color Contrast Check

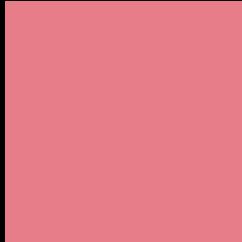
Large Text (above 18pt) WCAG AA × Fail

Any Text WCAG AA × Fail

Large Text (above 18pt) WCAG AAA × Fail

Any Text WCAG AAA × Fail

Black Background



This preview shows how the HunterLab color 58.0155, 37.5418, 11.8332 looks on a black background.

Color Contrast Check

Large Text (above 18pt) WCAG AA ✓ Pass

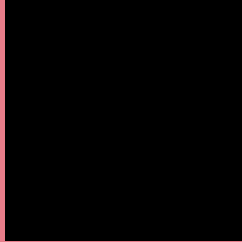
Any Text WCAG AA ✓ Pass

Large Text (above 18pt) WCAG AAA ✓ Pass

Any Text WCAG AAA ✓ Pass

If you want to check with other color combinations, try the [Color Contrast Checker](#).

HunterLab 58.0155, 37.5418, 11.8332 Background



This preview shows how black text looks on a background with the HunterLab color 58.0155, 37.5418, 11.8332.



This preview shows how white text looks on a background with the HunterLab color 58.0155, 37.5418,

Color Blindness Simulation

Color vision deficiency is a very complex topic, and I could not describe the different causes any better than Wikipedia does, so if you want to learn more, you should check out their [article about color blindness](#).

Dichromacy



Original Color

58.0155, 37.5418, 11.8332

Protanopia

58.3589, -2.1975, 4.4169

Deuteranopia

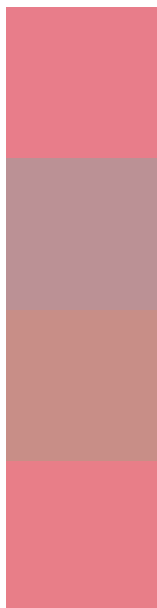
58.0090, 4.2024, 13.1381



Tritanopia

58.1608, 36.6731, 13.1137

Trichromacy



Original Color

58.0155, 37.5418, 11.8332

Protanomaly

57.4330, 11.5150, 6.2384

Deuteranomaly

57.7708, 15.8981, 12.3520

Tritanomaly

58.1851, 36.7897, 12.7626

Monochromacy



Original Color

58.0155, 37.5418, 11.8332

Achromatopsia

58.4734, -3.1200, 3.1770

Achromatomaly

57.5382, 10.5946, 5.4707

CSS Examples

Text

The CSS property to change the color of the text to HunterLab 58.0155, 37.5418, 11.8332 is called "color". The color property can be set on classes, ids or directly on the HTML element.

This example shows how text in the color `rgb(232, 125, 138)` looks like.

```
.text, #text, p{  
    color:rgb(232, 125, 138)  
}
```

If you want to add a text shadow in that color use the text-shadow property, you can generate a text shadow directly with our [CSS Text Shadow Generator](#).

Here you see how black text with a 4 pixel rgb(232, 125, 138) colored shadow looks like.

```
.shadow{ text-shadow: 4px 4px 2px rgb(232, 125, 138) }
```

Border

The CSS property to change the border of an element to HunterLab 58.0155, 37.5418, 11.8332 is called "border". The border property can be set on classes, ids or directly on the HTML element.

This example shows the color as border, it can be applied via the CSS property "border" or "border-color".

```
.border, #border, table{ border:4px solid rgb(232, 125, 138) }
```


If only the border color should be changed use the property `border-color`.

```
.border{ border-color:rgb(232, 125, 138) }
```

If you want to add a box shadow in that color use:

Here you see how a box with a 4 pixel `rgb(232, 125, 138)` colored shadow looks like.

```
.boxshadow{ -moz-box-shadow:4px 4px 4px  
4px rgb(232, 125, 138); -webkit-box-  
shadow:4px 4px 4px 4px rgb(232, 125, 138);  
box-shadow:4px 4px 4px 4px rgb(232, 125,  
138) }
```

Background

The CSS property to change the background color of an element to HunterLab 58.0155, 37.5418, 11.8332 is called "background". The background property can be set on classes, ids or directly on the HTML element.

```
.background, #background, body{  
background: rgb(232, 125, 138) }
```

If only the background color should be changed can be used:

```
.background{ background-color: rgb(232,  
125, 138) }
```

This example shows the color as background, it is applied via the CSS property "background".

To optimize and compress your CSS code, you can use our [online CSS compressor and optimizer](#) based on csstidy. If you want to create a linear or radial gradient as background or border, check our [CSS Gradient Generator](#).

Hey! You found this booklet interesting? Support Converting Colors with the new Membership Option!

The pro membership hides all ads, plus gives you double the colors in the color bucket, and more awesome pro features!

[Learn more, Memberships starting at \\$2.50/m!](#)

**Follow me
on Twitter!**

@ConvertingColor