

Converting Colors

HunterLab(58.1049, 1.7482,
12.4454)

Have a look what the booklet for
HunterLab(58.1049, 1.7482,
12.4454) contains.

HunterLab(58.1049, 1.7482, 12.4454)	3
<i>Conversions</i>	4
<i>Details</i>	6
<i>Harmonies</i>	12
<i>Previews</i>	24
<i>Color Blindness Simulation</i>	28
<i>CSS Examples</i>	31

Color

**HunterLab(58.1049, 1.7482,
12.4454)**

Conversions

Conversions Part 1

Format	Color
Hex	B09987
RGB	176, 153, 135
RGB Percent	69%, 60%, 53%
CMY	0.3098, 0.4000, 0.4706
CMYK	0.00, 0.13, 0.23, 0.31
HSL	26°, 21%, 61%
HSV	26°, 23%, 69%
XYZ	33.6689, 33.7618, 27.6638
YIQ	157.8250, 19.4860, -0.7220

Conversions

Conversions Part 2

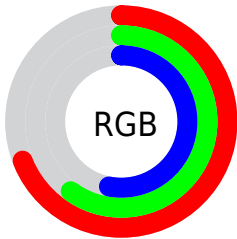
Format	Color
RYB	176, 167, 135
Decimal	11573639
CIELab	64.77, 5.62, 12.59
CIElCh	65, 13.789, 65.956
Yxy	33.7633, 0.3541, 0.3550
Android (android.graphics.Color)	4289763719 (0xFFB09987)
YUV	157.8250, -11.2527, 15.9395
Hunter-Lab	58.1049, 1.7482, 12.4454

Details

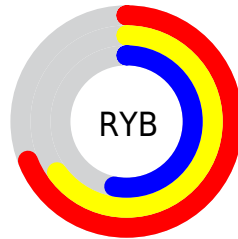
The HunterLab color $58.1049, 1.7482, 12.4454$ is a light color, and the websafe version is hex 999999 . A complement of this color would be $57.2175, -6.3694, -7.4166$, and the grayscale version is $58.4420, -3.1183, 3.1753$.

A 20% lighter version of the original color is $80.8779, 1.1895, 14.9796$, and $37.9072, 2.2208, 9.9549$ is the 20% darker color. If you saturate the color by 10%, you get $54.9625, 4.4334, 15.6568$, and if you desaturate by 10%, it is $61.3737, -0.6749, 8.8591$.

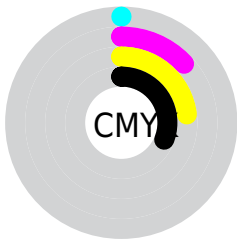
Distribution



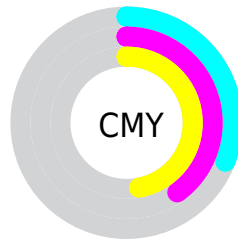
- Red (69%)
- Green (60%)
- Blue (53%)



- Red (69%)
- Yellow (65%)
- Blue (53%)



- Cyan (0%)
- Magenta (13%)
- Yellow (23%)
- Black (31%)



- Cyan (31%)
- Magenta (40%)
- Yellow (47%)

Brightness & Saturation Gradients

These gradients show how the HunterLab color 58.1049, 1.7482, 12.4454 changes by changing the brightness by 10 percent. The first figure shows a shift by +10% for each color and the second figure -10%.

Similar to the brightness gradients but the following saturation gradients show a change of the HunterLab color 58.1049, 1.7482, 12.4454 by changing the saturation by 10% instead.

■ 58.1049, 1.7482,
12.4454

■ 58.1049, 1.7482,
12.4454

178.6268, -2.5483,
23.8953

■ 47.6569, 2.0046,
11.1700

■ 80.9725, 1.0750,
14.9696

■ 37.9221, 2.2036,
9.8725

■ 93.3193, 0.6705,
16.2277

■ 28.9587, 2.3350,
8.5391

■ 106.2367, 0.2246,
17.4882

■ 20.8397, 2.3872,
7.1464

119.7006, -0.2602,
18.7536

■ 13.6645, 2.3424,
5.6580

133.6897, -0.7817,
20.0257

■ 7.2701, 2.9791,
5.0891

148.1849, -1.3379,

0.0000, NaN, NaN

21.3060

0.0000, NaN, NaN

163.1691, -1.9273,
22.5956

0.0000, NaN, NaN

■ 58.1049, 1.7482,
12.4454

■ 58.1049, 1.7482,
12.4454

■ 54.9625, 4.4334,
15.6568

■ 61.3737, -0.6749,
8.8591

■ 51.9548, 7.4031,
18.4426

■ 64.7538, -2.8497,
4.9383

■ 49.0969, 10.6675,
20.7516

■ 68.2368, -4.7982,
0.7217

■ 46.4039, 14.2295,
22.5304

■ 71.8141, -6.5401,
-3.7579

■ 43.8918, 18.0782,
23.7294

■ 75.4781, -8.0942,
-8.4724

■ 41.5766, 22.1824,
24.3127

■ 79.2221, -9.4779,
-13.3976

■ 39.4737, 26.4821,
24.2742

■ 82.9151, -11.4035,
-16.7588

■ 38.1807, 29.3903,
24.0413

■ 86.1109, -16.3594,
-12.3656

■ 89.3671, -21.2460,
-8.0712

Harmonies

Analogous

The Analogous color harmony consists of three colors that are next to each other on the color wheel.



58.1062, 6.6852, 9.3324



58.1049, 1.7482, 12.4454



58.1062, -4.3140, 13.1897

Triad

The Triadic color harmony groups three colors that are evenly spaced from another and form a triangle on the color wheel.



58.1062, 1.7463, 12.4462



58.1062, -14.3007, 1.9947



58.1062, 3.9353, -6.5988

Complementary

The Complementary color scheme is a pair of colors which are on the opposite of each other on the color wheel.



58.1049, 1.7482, 12.4454



57.2175, -6.3694, -7.4166

Split Complementary

Split-complementary colors differ from the complementary color scheme. The scheme consists of three colors, the original color and two neighbors of the complement color.



58.1062, -1.8830, -9.0467



58.1049, 1.7482, 12.4454



58.1062, -12.2843, -3.7674

Square

The Square scheme is like the rectangle color scheme, but the four colors are evenly spaced on the color wheel.



58.1062, 1.7463, 12.4462



58.1062, -13.4183, 7.5220



58.1062, -7.7993, -7.9607



58.1062, 7.9851, -1.5626

Rectangle

The Rectangle color scheme consists of four colors that form a rectangle on the color wheel.



58.1049, 1.7482, 12.4454



58.1062, -8.1419, 12.3160



58.1062, -7.7993, -7.9607



58.1062, 2.1126, -7.7741

Sweetspot

The Sweet Spot groups the original color and five complimentary colors.



58.1062, 1.7463, 12.4462



85.4460, -2.7542, 8.7213



53.8842, 14.2266, -2.2570



39.6555, -1.2047, 4.2022



94.3401, -5.0338, 5.1257



41.3092, -2.2042, 2.2444

Same Dimension

The Same Dimension uses a secret algorithm to generate beautiful new colors.



58.1062, 1.7463, 12.4462



76.0317, 4.1856, 19.0752



64.0071, -8.0682, 18.0668



30.1643, -0.7531, 3.5323



32.8763, 24.7496, 20.6915



6.7601, 2.3043, 4.2059

Inverse Universe

The Inverse Universe completely reimagines the original color for something new.



57.2175, -6.3694, -7.4166



74.5758, -9.0776, -13.4317



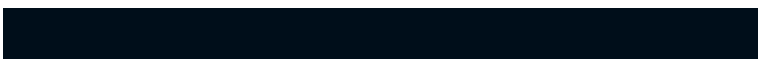
51.3678, 3.5087, -15.6952



29.9906, -2.3446, -0.3545



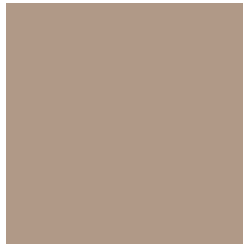
29.8767, 1.8626, -41.3641



6.2821, -1.2745, -5.1008

Previews

White Background



This preview shows how the HunterLab color 58.1049, 1.7482, 12.4454 looks on a white background.

Color Contrast Check

Large Text (above 18pt) WCAG AA × Fail

Any Text WCAG AA × Fail

Large Text (above 18pt) WCAG AAA × Fail

Any Text WCAG AAA × Fail

Black Background



This preview shows how the HunterLab color 58.1049, 1.7482, 12.4454 looks on a black background.

Color Contrast Check

Large Text (above 18pt) WCAG AA ✓ Pass

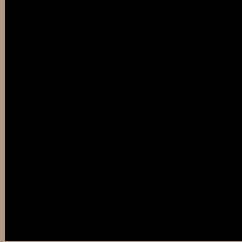
Any Text WCAG AA ✓ Pass

Large Text (above 18pt) WCAG AAA ✓ Pass

Any Text WCAG AAA ✓ Pass

If you want to check with other color combinations, try the [Color Contrast Checker](#).

HunterLab 58.1049, 1.7482, 12.4454 Background



This preview shows how black text looks on a background with the HunterLab color 58.1049, 1.7482, 12.4454.



This preview shows how white text looks on a background with the HunterLab color 58.1049, 1.7482,

Color Blindness Simulation

Color vision deficiency is a very complex topic, and I could not describe the different causes any better than Wikipedia does, so if you want to learn more, you should check out their [article about color blindness](#).

Dichromacy



Original Color

58.1049, 1.7482, 12.4454

Protanopia

58.2404, -3.5704, 11.7315

Deuteranopia

57.9532, 4.1117, 12.3321



Tritanopia

58.0102, 8.5508, 1.4332

Trichromacy



Original Color

58.1049, 1.7482, 12.4454

Protanomaly

58.3005, -1.9242, 12.2030

Deuteranomaly

58.1287, 3.2701, 12.4963

Tritanomaly

57.9178, 6.3088, 5.3895

Monochromacy



Original Color

58.1049, 1.7482, 12.4454

Achromatopsia

58.4734, -3.1200, 3.1770

Achromatomaly

58.2909, -1.2295, 6.5483

CSS Examples

Text

The CSS property to change the color of the text to HunterLab 58.1049, 1.7482, 12.4454 is called "color". The color property can be set on classes, ids or directly on the HTML element.

This example shows how text in the color `rgb(176, 153, 135)` looks like.

```
.text, #text, p{  
    color:rgb(176, 153, 135)  
}
```

If you want to add a text shadow in that color use the text-shadow property, you can generate a text shadow directly with our [CSS Text Shadow Generator](#).

Here you see how black text with a 4 pixel rgb(176, 153, 135) colored shadow looks like.

```
.shadow{ text-shadow: 4px 4px 2px rgb(176, 153, 135) }
```

Border

The CSS property to change the border of an element to HunterLab 58.1049, 1.7482, 12.4454 is called "border". The border property can be set on classes, ids or directly on the HTML element.

This example shows the color as border, it can be applied via the CSS property "border" or "border-color".

```
.border, #border, table{ border:4px solid rgb(176, 153, 135) }
```


If only the border color should be changed use the property `border-color`.

```
.border{ border-color:rgb(176, 153, 135) }
```

If you want to add a box shadow in that color use:

Here you see how a box with a 4 pixel `rgb(176, 153, 135)` colored shadow looks like.

```
.boxshadow{ -moz-box-shadow:4px 4px 4px  
4px rgb(176, 153, 135); -webkit-box-  
shadow:4px 4px 4px 4px rgb(176, 153, 135);  
box-shadow:4px 4px 4px 4px rgb(176, 153,  
135) }
```

Background

The CSS property to change the background color of an element to HunterLab 58.1049, 1.7482, 12.4454 is called "background". The background property can be set on classes, ids or directly on the HTML element.

```
.background, #background, body{  
background: rgb(176, 153, 135) }
```

If only the background color should be changed can be used:

```
.background{ background-color: rgb(176,  
153, 135) }
```

This example shows the color as background, it is applied via the CSS property "background".

To optimize and compress your CSS code, you can use our [online CSS compressor and optimizer](#) based on csstidy. If you want to create a linear or radial gradient as background or border, check our [CSS Gradient Generator](#).

Hey! You found this booklet interesting? Support Converting Colors with the new Membership Option!

The pro membership hides all ads, plus gives you double the colors in the color bucket, and more awesome pro features!

[Learn more, Memberships starting at \\$2.50/m!](#)

**Follow me
on Twitter!**

@ConvertingColor