

Converting Colors

HunterLab(58.1143, 3.1229,
10.5503)

Have a look what the booklet for
HunterLab(58.1143, 3.1229,
10.5503) contains.

HunterLab(58.0491, 3.2503, 10.4852)	3
<i>Conversions</i>	4
<i>Details</i>	6
<i>Harmonies</i>	12
<i>Previews</i>	24
<i>Color Blindness Simulation</i>	28
<i>CSS Examples</i>	31

Color

**HunterLab(58.0491, 3.2503,
10.4852)**

Conversions

Conversions Part 1

Format	Color
Hex	B1988C
RGB	177, 152, 140
RGB Percent	69%, 60%, 55%
CMY	0.3059, 0.4039, 0.4510
CMYK	0.00, 0.14, 0.21, 0.31
HSL	19°, 19%, 62%
HSV	19°, 21%, 69%
XYZ	34.0933, 33.6970, 29.5182
YIQ	158.1070, 18.7520, 1.5680

Conversions

Conversions Part 2

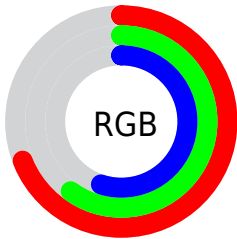
Format	Color
RYB	177, 158, 140
Decimal	11638924
CIELab	64.72, 7.32, 9.73
CIELCh	65, 12.180, 53.052
Yxy	33.6985, 0.3504, 0.3463
Android (android.graphics.Color)	4289829004 (0xFFB1988C)
YUV	158.1070, -8.9268, 16.5692
Hunter-Lab	58.0491, 3.2503, 10.4852

Details

The HunterLab color $58.0491, 3.2503, 10.4852$ is a light color, and the websafe version is hex 999999 . A complement of this color would be $59.7152, -8.2324, -4.6468$, and the grayscale version is $58.5480, -3.1240, 3.1810$.

A 20% lighter version of the original color is $80.8463, 2.9442, 12.4384$, and $37.8558, 3.5915, 8.2398$ is the 20% darker color. If you saturate the color by 10%, you get $54.3411, 6.8897, 13.4093$, and if you desaturate by 10%, it is $61.9216, -0.1296, 7.3095$.

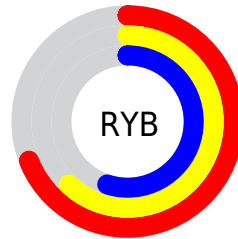
Distribution



Red (69%)

Green (60%)

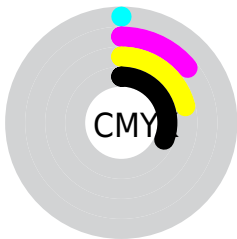
Blue (55%)



Red (69%)

Yellow (62%)

Blue (55%)

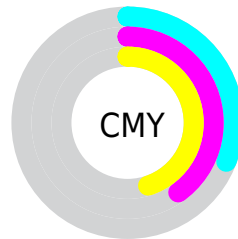


Cyan (0%)

Magenta (14%)

Yellow (21%)

Black (31%)



Cyan (31%)

Magenta (40%)

Yellow (45%)

Brightness & Saturation Gradients

These gradients show how the HunterLab color 58.0491, 3.2503, 10.4852 changes by changing the brightness by 10 percent. The first figure shows a shift by +10% for each color and the second figure -10%.

Similar to the brightness gradients but the following saturation gradients show a change of the HunterLab color 58.0491, 3.2503, 10.4852 by changing the saturation by 10% instead.

■ 58.0491, 3.2503,
10.4852

■ 58.0491, 3.2503,
10.4852

178.5457, -0.4045,
20.7803

■ 47.6047, 3.4177,
9.3795

■ 80.9102, 2.7411,
12.7047

■ 37.8737, 3.5217,
8.2672

■ 93.2539, 2.4129,
13.8238

■ 28.9144, 3.5508,
7.1390

■ 106.1685, 2.0400,
14.9526

■ 20.8001, 3.4917,
5.9787

119.6296, 1.6255,
16.0924

■ 13.6301, 3.3235,
4.7562

133.6160, 1.1717,
17.2444

■ 7.2306, 4.0261,
5.0614

148.1086, 0.6809,

0.0000, NaN, NaN

18.4094

0.0000, NaN, NaN

163.0903, 0.1550,
19.5879

0.0000, NaN, NaN

■ 58.0491, 3.2503,
10.4852

■ 58.0491, 3.2503,
10.4852

■ 54.3411, 6.8897,
13.4093

■ 61.9216, -0.1296,
7.3095

■ 50.8137, 10.8108,
16.0317

■ 65.9374, -3.2658,
3.9184

■ 47.4917, 15.0188,
18.2967

■ 70.0829, -6.1828,
0.3441

■ 44.4014, 19.5036,
20.1395

■ 74.3457, -8.9034,
-3.3881

■ 41.5719, 24.2281,
21.4907

■ 78.7148, -11.4486,
-7.2578

■ 39.0341, 29.1164,
22.2864

■ 83.1811, -13.8379,
-11.2485

■ 36.8177, 34.0415,
22.4871

■ 87.4017, -17.9712,
-10.6363

■ 35.0932, 38.3609,
22.2958

■ 91.3769, -23.8584,
-5.4981

■ 93.8548, -27.4220,
-2.4129

Harmonies

Analogous

The Analogous color harmony consists of three colors that are next to each other on the color wheel.



58.0504, 6.7267, 6.8821



58.0491, 3.2503, 10.4852



58.0504, -1.8441, 12.1029

Triad

The Triadic color harmony groups three colors that are evenly spaced from another and form a triangle on the color wheel.



58.0504, 3.2484, 10.4861



58.0504, -13.0152, 4.3375



58.0504, 1.0054, -6.6424

Complementary

The Complementary color scheme is a pair of colors which are on the opposite of each other on the color wheel.



58.0491, 3.2503, 10.4852



59.7152, -8.2324, -4.6468

Split Complementary

Split-complementary colors differ from the complementary color scheme. The scheme consists of three colors, the original color and two neighbors of the complement color.



58.0504, -4.3464, -7.4803



58.0491, 3.2503, 10.4852



58.0504, -12.3146, -0.8265

Square

The Square scheme is like the rectangle color scheme, but the four colors are evenly spaced on the color wheel.



58.0504, 3.2484, 10.4861



58.0504, -11.1376, 8.7684



58.0504, -9.1878, -5.2664



58.0504, 5.3991, -3.0710

Rectangle

The Rectangle color scheme consists of four colors that form a rectangle on the color wheel.



58.0491, 3.2503, 10.4852



58.0504, -5.4180, 11.9510



58.0504, -9.1878, -5.2664



58.0504, -0.7461, -7.2657

Sweetspot

The Sweet Spot groups the original color and five complimentary colors.



58.0504, 3.2484, 10.4861



85.4250, -2.2270, 7.6363



55.5253, 13.1840, -3.7104



39.6105, -0.9133, 3.6875



94.3401, -5.0338, 5.1257



41.3092, -2.2042, 2.2444

Same Dimension

The Same Dimension uses a secret algorithm to generate beautiful new colors.



58.0504, 3.2484, 10.4861



75.4131, 6.5064, 15.8483



63.3021, -5.6541, 15.6687



29.9007, -0.3058, 3.2452



30.0375, 32.1872, 19.0724



6.2663, 3.3659, 3.9202

Inverse Universe

The Inverse Universe completely reimagines the original color for something new.



59.7152, -8.2324, -4.6468



78.1038, -12.0816, -8.6350



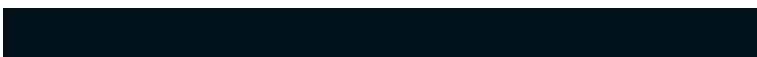
54.3602, 0.5930, -11.8605



30.2613, -2.7858, -0.0273



34.7462, -6.1644, -30.1225



6.9307, -2.2156, -3.8800

Previews

White Background



This preview shows how the HunterLab color 58.0491, 3.2503, 10.4852 looks on a white background.

Color Contrast Check

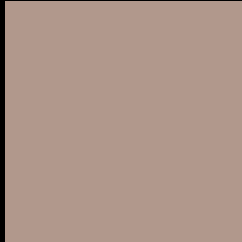
Large Text (above 18pt) WCAG AA × Fail

Any Text WCAG AA × Fail

Large Text (above 18pt) WCAG AAA × Fail

Any Text WCAG AAA × Fail

Black Background



This preview shows how the HunterLab color 58.0491, 3.2503, 10.4852 looks on a black background.

Color Contrast Check

Large Text (above 18pt) WCAG AA ✓ Pass

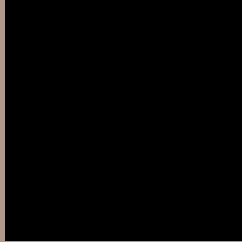
Any Text WCAG AA ✓ Pass

Large Text (above 18pt) WCAG AAA ✓ Pass

Any Text WCAG AAA ✓ Pass

If you want to check with other color combinations, try the [Color Contrast Checker](#).

HunterLab 58.0491, 3.2503, 10.4852 Background



This preview shows how black text looks on a background with the HunterLab color 58.0491, 3.2503, 10.4852.



This preview shows how white text looks on a background with the HunterLab color 58.0491, 3.2503,

Color Blindness Simulation

Color vision deficiency is a very complex topic, and I could not describe the different causes any better than Wikipedia does, so if you want to learn more, you should check out their [article about color blindness](#).

Dichromacy



Original Color

58.0491, 3.2503, 10.4852

Protanopia

58.1837, -3.5157, 9.7132

Deuteranopia

57.8720, 4.0880, 10.3131



Tritanopia

58.1132, 8.8881, 1.5636

Trichromacy



Original Color

58.0491, 3.2503, 10.4852

Protanomaly

58.0436, -1.0840, 10.0068

Deuteranomaly

57.8720, 4.0880, 10.3131

Tritanomaly

58.0485, 6.7986, 5.1067

Monochromacy



Original Color

58.0491, 3.2503, 10.4852

Achromatopsia

58.4734, -3.1200, 3.1770

Achromatomaly

58.3186, -1.0784, 6.1510

CSS Examples

Text

The CSS property to change the color of the text to HunterLab 58.0491, 3.2503, 10.4852 is called "color". The color property can be set on classes, ids or directly on the HTML element.

This example shows how text in the color `rgb(177, 152, 140)` looks like.

```
.text, #text, p{  
    color:rgb(177, 152, 140)  
}
```

If you want to add a text shadow in that color use the text-shadow property, you can generate a text shadow directly with our [CSS Text Shadow Generator](#).

Here you see how black text with a 4 pixel rgb(177, 152, 140) colored shadow looks like.

```
.shadow{ text-shadow: 4px 4px 2px rgb(177, 152, 140) }
```

Border

The CSS property to change the border of an element to HunterLab 58.0491, 3.2503, 10.4852 is called "border". The border property can be set on classes, ids or directly on the HTML element.

This example shows the color as border, it can be applied via the CSS property "border" or "border-color".

```
.border, #border, table{ border:4px solid rgb(177, 152, 140) }
```


If only the border color should be changed use the property `border-color`.

```
.border{ border-color:rgb(177, 152, 140) }
```

If you want to add a box shadow in that color use:

Here you see how a box with a 4 pixel `rgb(177, 152, 140)` colored shadow looks like.

```
.boxshadow{ -moz-box-shadow:4px 4px 4px  
4px rgb(177, 152, 140); -webkit-box-  
shadow:4px 4px 4px 4px rgb(177, 152, 140);  
box-shadow:4px 4px 4px 4px rgb(177, 152,  
140) }
```

Background

The CSS property to change the background color of an element to HunterLab 58.0491, 3.2503, 10.4852 is called "background". The background property can be set on classes, ids or directly on the HTML element.

```
.background, #background, body{  
background: rgb(177, 152, 140) }
```

If only the background color should be changed can be used:

```
.background{ background-color: rgb(177,  
152, 140) }
```

This example shows the color as background, it is applied via the CSS property "background".

To optimize and compress your CSS code, you can use our [online CSS compressor and optimizer](#) based on csstidy. If you want to create a linear or radial gradient as background or border, check our [CSS Gradient Generator](#).

Hey! You found this booklet interesting? Support Converting Colors with the new Membership Option!

The pro membership hides all ads, plus gives you double the colors in the color bucket, and more awesome pro features!

[Learn more, Memberships starting at \\$2.50/m!](#)

**Follow me
on Twitter!**

@ConvertingColor