

Converting Colors

HunterLab(58.1446, 44.2733,
4.9367)

Have a look what the booklet for
HunterLab(58.1446, 44.2733,
4.9367) contains.

HunterLab(58.1412, 44.2609, 4.9782)	3
<i>Conversions</i>	4
<i>Details</i>	6
<i>Harmonies</i>	12
<i>Previews</i>	24
<i>Color Blindness Simulation</i>	28
<i>CSS Examples</i>	31

Color

**HunterLab(58.1412, 44.2609,
4.9782)**

Conversions

Conversions Part 1

Format	Color
Hex	ED789B
RGB	237, 120, 155
RGB Percent	93%, 47%, 61%
CMY	0.0706, 0.5294, 0.3922
CMYK	0.00, 0.49, 0.35, 0.07
HSL	342°, 76%, 70%
HSV	342°, 49%, 93%
XYZ	47.5579, 33.8040, 35.0285
YIQ	158.9730, 58.4970, 35.6890

Conversions

Conversions Part 2

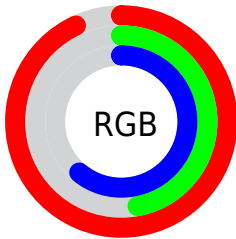
Format	Color
R _Y B	237, 120, 155
Decimal	15562907
CIE Lab	64.81, 48.64, 2.28
CIE LCh	65, 48.691, 2.687
Yxy	33.8057, 0.4086, 0.2904
Android (android.graphics.Color)	4293752987 (0xFFED789B)
YUV	158.9730, -1.9587, 68.4297
Hunter-Lab	58.1412, 44.2609, 4.9782

Details

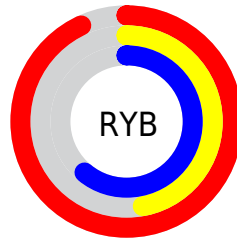
The HunterLab color **58.1412, 44.2609, 4.9782** is a light color, and the websafe version is hex **FF6699**. A complement of this color would be **82.9617, -40.4170, 10.4768**, and the grayscale version is **58.8628, -3.1408, 3.1981**.

A 20% lighter version of the original color is **75.1820, 30.0662, -0.7176**, and **37.8958, 41.1100, 3.5804** is the 20% darker color. If you saturate the color by 10%, you get **53.1720, 53.8245, 6.7301**, and if you desaturate by 10%, it is **63.8952, 34.1874, 3.9349**.

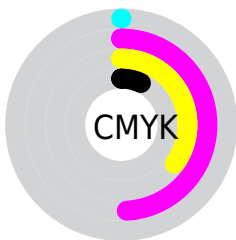
Distribution



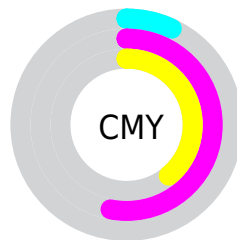
- Red (93%)
- Green (47%)
- Blue (61%)



- Red (93%)
- Yellow (47%)
- Blue (61%)



- Cyan (0%)
- Magenta (49%)
- Yellow (35%)
- Black (7%)



- Cyan (7%)
- Magenta (53%)
- Yellow (39%)

Brightness & Saturation Gradients

These gradients show how the HunterLab color 58.1412, 44.2609, 4.9782 changes by changing the brightness by 10 percent. The first figure shows a shift by +10% for each color and the second figure -10%.

Similar to the brightness gradients but the following saturation gradients show a change of the HunterLab color 58.1412, 44.2609, 4.9782 by changing the saturation by 10% instead.

58.1412, 44.2609,
4.9782

58.1412, 44.2609,
4.9782

178.6798, 54.5927,
12.3872

47.6911, 42.6273,
4.2906

81.0132, 47.1875,
6.4432

37.9537, 40.8835,
3.6315

93.3620, 48.4989,
7.2164

28.9876, 39.0351,
3.0028

106.2813, 49.7166,
8.0160

20.8656, 37.1203,
2.4046

119.7470, 50.8465,
8.8415

13.6870, 35.2711,
1.8358

133.7378, 51.8942,
9.6919

7.2958, 36.4732,
1.6939

148.2347, 52.8649,

0.0000, INF, NaN

10.5668

0.0000, NaN, NaN

163.2205, 53.7630,
11.4654

0.0000, NaN, NaN

■ 58.1412, 44.2609,
4.9782

■ 58.1412, 44.2609,
4.9782

■ 53.1720, 53.8245,
6.7301

■ 63.8952, 34.1874,
3.9349

■ 49.1098, 62.2848,
9.2093

■ 70.3077, 24.0100,
3.5160

■ 46.0616, 68.8909,
12.3282

■ 77.2739, 13.9450,
3.6248

■ 44.0710, 72.9863,
15.8501

■ 84.7061, 4.0933,
4.1681

■ 43.0167, 74.5580,
19.3747

■ 92.5341, -5.5138,
5.0663

■ 42.9628, 74.6307,
19.5791

■ 98.3479, -11.1532,
3.5402

■ 98.3588, -11.0929,
3.3851

Harmonies

Analogous

The Analogous color harmony consists of three colors that are next to each other on the color wheel.



58.1427, 38.4062, -17.9433



58.1412, 44.2609, 4.9782



58.1427, 35.9697, 20.6587

Triad

The Triadic color harmony groups three colors that are evenly spaced from another and form a triangle on the color wheel.



58.1427, 44.2575, 4.9795



58.1427, -23.8026, 27.4992



58.1427, -20.8964, -43.7827

Complementary

The Complementary color scheme is a pair of colors which are on the opposite of each other on the color wheel.



58.1412, 44.2609, 4.9782



82.9617, -40.4170, 10.4768

Split Complementary

Split-complementary colors differ from the complementary color scheme. The scheme consists of three colors, the original color and two neighbors of the complement color.



58.1427, -33.9876, -22.3513



58.1412, 44.2609, 4.9782



58.1427, -35.4861, 18.4815

Square

The Square scheme is like the rectangle color scheme, but the four colors are evenly spaced on the color wheel.



58.1427, 44.2575, 4.9795



58.1427, -5.0319, 30.3489



58.1427, -38.9275, 1.2898



58.1427, -1.1536, -51.4655

Rectangle

The Rectangle color scheme consists of four colors that form a rectangle on the color wheel.



58.1412, 44.2609, 4.9782



58.1427, 24.1566, 26.5703



58.1427, -38.9275, 1.2898



58.1427, -26.1175, -37.6401

Sweetspot

The Sweet Spot groups the original color and five complimentary colors.



58.1427, 44.2575, 4.9795



87.3893, 10.5133, 4.1406



56.6497, 46.8587, -48.1273



39.6473, 5.9167, 1.8649

0.0000, NaN, NaN



46.2646, -2.4686, 2.5136

Same Dimension

The Same Dimension uses a secret algorithm to generate beautiful new colors.



58.1427, 44.2575, 4.9795



57.8440, 58.3589, 7.2833



62.5521, 28.0757, 22.1911



38.8950, 1.9243, 1.9123



31.7767, 55.2613, 14.0009



8.9963, 15.8229, 2.5853

Inverse Universe

The Inverse Universe completely reimagines the original color for something new.



58.1427, 44.2575, 4.9795



57.8440, 58.3589, 7.2833



76.1575, -23.1659, -15.8532



38.8950, 1.9243, 1.9123



31.7767, 55.2613, 14.0009



8.9963, 15.8229, 2.5853

Previews

White Background



This preview shows how the HunterLab color 58.1412, 44.2609, 4.9782 looks on a white background.

Color Contrast Check

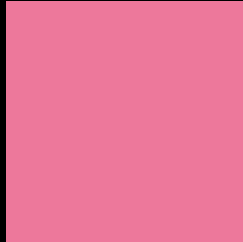
Large Text (above 18pt) WCAG AA × Fail

Any Text WCAG AA × Fail

Large Text (above 18pt) WCAG AAA × Fail

Any Text WCAG AAA × Fail

Black Background



This preview shows how the HunterLab color 58.1412, 44.2609, 4.9782 looks on a black background.

Color Contrast Check

Large Text (above 18pt) WCAG AA ✓ Pass

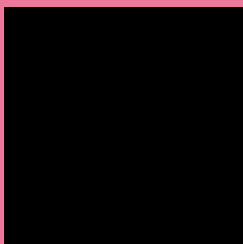
Any Text WCAG AA ✓ Pass

Large Text (above 18pt) WCAG AAA ✓ Pass

Any Text WCAG AAA ✓ Pass

If you want to check with other color combinations, try the [Color Contrast Checker](#).

HunterLab 58.1412, 44.2609, 4.9782 Background



This preview shows how black text looks on a background with the HunterLab color 58.1412, 44.2609, 4.9782.



This preview shows how white text looks on a background with the HunterLab color 58.1412, 44.2609,

4.9782.

Color Blindness Simulation

Color vision deficiency is a very complex topic, and I could not describe the different causes any better than Wikipedia does, so if you want to learn more, you should check out their [article about color blindness](#).

Dichromacy



Original Color

58.1412, 44.2609, 4.9782

Protanopia

58.5293, -0.2280, -6.0740

Deuteranopia

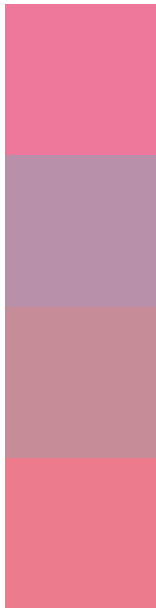
58.2139, 4.3346, 6.5595



Tritanopia

58.1128, 38.6823, 13.8462

Trichromacy



Original Color

58.1412, 44.2609, 4.9782

Protanomaly

57.5547, 14.4724, -2.9496

Deuteranomaly

57.4708, 18.4895, 5.0909

Tritanomaly

58.2425, 40.5347, 10.9459

Monochromacy



Original Color

58.1412, 44.2609, 4.9782

Achromatopsia

58.8816, -3.1418, 3.1991

Achromatomaly

57.6925, 12.8676, 2.5316

CSS Examples

Text

The CSS property to change the color of the text to HunterLab 58.1412, 44.2609, 4.9782 is called "color". The color property can be set on classes, ids or directly on the HTML element.

This example shows how text in the color `rgb(237, 120, 155)` looks like.

```
.text, #text, p{  
    color:rgb(237, 120, 155)  
}
```

If you want to add a text shadow in that color use the text-shadow property, you can generate a text shadow directly with our [CSS Text Shadow Generator](#).

Here you see how black text with a 4 pixel rgb(237, 120, 155) colored shadow looks like.

```
.shadow{ text-shadow: 4px 4px 2px rgb(237, 120, 155) }
```

Border

The CSS property to change the border of an element to HunterLab 58.1412, 44.2609, 4.9782 is called "border". The border property can be set on classes, ids or directly on the HTML element.

This example shows the color as border, it can be applied via the CSS property "border" or "border-color".

```
.border, #border, table{ border:4px solid rgb(237, 120, 155) }
```


If only the border color should be changed use the property border-color.

```
.border{ border-color:rgb(237, 120, 155) }
```

If you want to add a box shadow in that color use:

Here you see how a box with a 4 pixel rgb(237, 120, 155) colored shadow looks like.

```
.boxshadow{ -moz-box-shadow:4px 4px 4px  
4px rgb(237, 120, 155); -webkit-box-  
shadow:4px 4px 4px 4px rgb(237, 120, 155);  
box-shadow:4px 4px 4px 4px rgb(237, 120,  
155) }
```

Background

The CSS property to change the background color of an element to HunterLab 58.1412, 44.2609, 4.9782 is called "background". The background property can be set on classes, ids or directly on the HTML element.

```
.background, #background, body{  
background: rgb(237, 120, 155) }
```

If only the background color should be changed can be used:

```
.background{ background-color: rgb(237,  
120, 155) }
```

This example shows the color as background, it is applied via the CSS property "background".

To optimize and compress your CSS code, you can use our [online CSS compressor and optimizer](#) based on csstidy. If you want to create a linear or radial gradient as background or border, check our [CSS Gradient Generator](#).

Hey! You found this booklet interesting? Support Converting Colors with the new Membership Option!

The pro membership hides all ads, plus gives you double the colors in the color bucket, and more awesome pro features!

[Learn more, Memberships starting at \\$2.50/m!](#)

**Follow me
on Twitter!**

@ConvertingColor