

Converting Colors

HunterLab(58.1784, 6.2395,
12.9720)

Have a look what the booklet for
HunterLab(58.1784, 6.2395,
12.9720) contains.

HunterLab(58.1792, 6.2359, 12.9741)	3
<i>Conversions</i>	4
<i>Details</i>	6
<i>Harmonies</i>	12
<i>Previews</i>	24
<i>Color Blindness Simulation</i>	28
<i>CSS Examples</i>	31

Color

**HunterLab(58.1792, 6.2359,
12.9741)**

Conversions

Conversions Part 1

Format	Color
Hex	B99686
RGB	185, 150, 134
RGB Percent	73%, 59%, 53%
CMY	0.2745, 0.4117, 0.4745
CMYK	0.00, 0.19, 0.28, 0.27
HSL	19°, 27%, 63%
HSV	19°, 28%, 73%
XYZ	35.2170, 33.8482, 27.2314
YIQ	158.6410, 25.9960, 2.4440

Conversions

Conversions Part 2

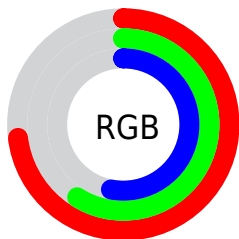
Format	Color
RYB	185, 157, 134
Decimal	12162694
CIELab	64.84, 10.66, 13.38
CIElCh	65, 17.105, 51.438
Yxy	33.8498, 0.3657, 0.3515
Android (android.graphics.Color)	4290352774 (0xFFB99686)
YUV	158.6410, -12.1480, 23.1168
Hunter-Lab	58.1792, 6.2359, 12.9741

Details

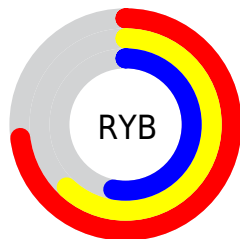
The HunterLab color $58.1792, 6.2359, 12.9741$ is a light color, and the websafe version is hex $CC9999$. A complement of this color would be $60.7832, -10.1182, -7.4944$, and the grayscale version is $58.7766, -3.1362, 3.1934$.

A 20% lighter version of the original color is $81.0252, 6.2057, 15.6338$, and $37.9329, 6.1890, 10.3726$ is the 20% darker color. If you saturate the color by 10%, you get $54.3537, 10.3674, 15.8160$, and if you desaturate by 10%, it is $62.1977, 2.3911, 9.8452$.

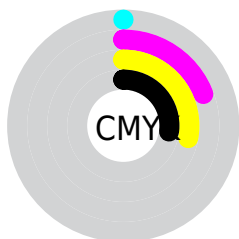
Distribution



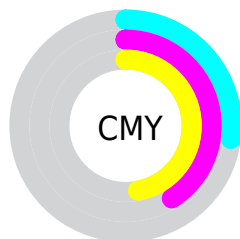
- Red (73%)
- Green (59%)
- Blue (53%)



- Red (73%)
- Yellow (62%)
- Blue (53%)



- Cyan (0%)
- Magenta (19%)
- Yellow (28%)
- Black (27%)



- Cyan (27%)
- Magenta (41%)
- Yellow (47%)

Brightness & Saturation Gradients

These gradients show how the HunterLab color 58.1792, 6.2359, 12.9741 changes by changing the brightness by 10 percent. The first figure shows a shift by +10% for each color and the second figure -10%.

Similar to the brightness gradients but the following saturation gradients show a change of the HunterLab color 58.1792, 6.2359, 12.9741 by changing the saturation by 10% instead.

■ 58.1792, 6.2359,
12.9741

■ 58.1792, 6.2359,
12.9741

178.7349, 3.8176,
24.7442

■ 47.7265, 6.2328,
11.6516

■ 81.0555, 6.0412,
15.5829

■ 37.9866, 6.1559,
10.3026

■ 93.4063, 5.8597,
16.8796

■ 29.0176, 5.9913,
8.9124

■ 106.3276, 5.6276,
18.1766

■ 20.8926, 5.7226,
7.4552

119.7952, 5.3485,
19.4768

■ 13.7104, 5.3254,
5.9038

133.7878, 5.0256,
20.7823

■ 7.3223, 5.9542,
5.1256

148.2864, 4.6613,

0.0000, NaN, NaN

22.0945

0.0000, NaN, NaN

163.2739, 4.2580,
23.4148

0.0000, NaN, NaN

■ 58.1792, 6.2359,
12.9741

■ 58.1792, 6.2359,
12.9741

■ 54.3537, 10.3674,
15.8160

■ 62.1977, 2.3911,
9.8452

■ 50.7419, 14.8023,
18.3113

■ 66.3839, -1.1802,
6.4734

■ 47.3734, 19.5325,
20.3941

■ 70.7210, -4.5036,
2.8973

■ 44.2799, 24.5253,
21.9902

■ 75.1937, -7.6036,
-0.8529

■ 41.4953, 29.7075,
23.0260

■ 79.7887, -10.5041,
-4.7531

■ 39.0537, 34.9530,
23.4459

■ 84.4948, -13.2272,
-8.7841

■ 36.9822, 40.0611,
23.2824

■ 88.9887, -17.5548,
-8.5067

■ 36.5319, 41.2355,
23.2327

■ 93.2097, -23.8350,
-3.1611

■ 94.3686, -25.5176,
-1.7375

Harmonies

Analogous

The Analogous color harmony consists of three colors that are next to each other on the color wheel.



58.1805, 11.0505, 7.9976



58.1792, 6.2359, 12.9741



58.1805, -0.9275, 15.2484

Triad

The Triadic color harmony groups three colors that are evenly spaced from another and form a triangle on the color wheel.



58.1805, 6.2338, 12.9750



58.1805, -16.7951, 5.1882



58.1805, 2.3013, -11.2303

Complementary

The Complementary color scheme is a pair of colors which are on the opposite of each other on the color wheel.



58.1792, 6.2359, 12.9741



60.7832, -10.1182, -7.4944

Split Complementary

Split-complementary colors differ from the complementary color scheme. The scheme consists of three colors, the original color and two neighbors of the complement color.



58.1805, -5.2558, -12.2331



58.1792, 6.2359, 12.9741



58.1805, -16.0290, -2.1171

Square

The Square scheme is like the rectangle color scheme, but the four colors are evenly spaced on the color wheel.



58.1805, 6.2338, 12.9750



58.1805, -14.0430, 11.1440



58.1805, -11.8942, -8.7162



58.1805, 8.7006, -6.1289

Rectangle

The Rectangle color scheme consists of four colors that form a rectangle on the color wheel.



58.1792, 6.2359, 12.9741



58.1805, -5.9621, 15.1552



58.1805, -11.8942, -8.7162



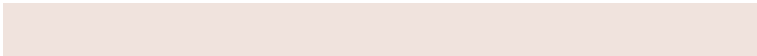
58.1805, -0.1967, -12.0817

Sweetspot

The Sweet Spot groups the original color and five complimentary colors.



58.1805, 6.2338, 12.9750



88.5187, -1.3191, 8.9252



55.0052, 19.7882, -6.5923



40.7040, -0.2884, 4.4659



96.5975, -5.1542, 5.2483



43.2801, -2.3093, 2.3515

Same Dimension

The Same Dimension uses a secret algorithm to generate beautiful new colors.



58.1805, 6.2338, 12.9750



74.7704, 11.5982, 19.6858



65.2824, -5.9615, 19.6380



30.7568, -0.2664, 3.3199



30.3381, 33.4799, 19.2803



6.6231, 3.9278, 4.1499

Inverse Universe

The Inverse Universe completely reimagines the original color for something new.



60.7832, -10.1182, -7.4944



78.9606, -14.8182, -13.3302



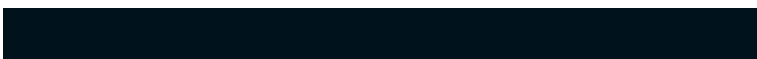
53.4590, 1.9169, -17.9308



31.1806, -2.9147, -0.0037



35.8413, -6.9771, -29.7369



7.4717, -2.3896, -4.1805

Previews

White Background



This preview shows how the HunterLab color 58.1792, 6.2359, 12.9741 looks on a white background.

Color Contrast Check

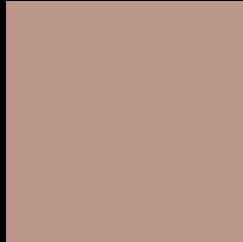
Large Text (above 18pt) WCAG AA × Fail

Any Text WCAG AA × Fail

Large Text (above 18pt) WCAG AAA × Fail

Any Text WCAG AAA × Fail

Black Background



This preview shows how the HunterLab color 58.1792, 6.2359, 12.9741 looks on a black background.

Color Contrast Check

Large Text (above 18pt) WCAG AA ✓ Pass

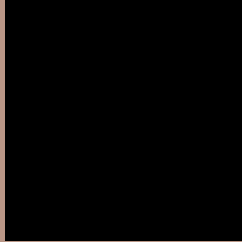
Any Text WCAG AA ✓ Pass

Large Text (above 18pt) WCAG AAA ✓ Pass

Any Text WCAG AAA ✓ Pass

If you want to check with other color combinations, try the [Color Contrast Checker](#).

HunterLab 58.1792, 6.2359, 12.9741 Background



This preview shows how black text looks on a background with the HunterLab color 58.1792, 6.2359, 12.9741.



This preview shows how white text looks on a background with the HunterLab color 58.1792, 6.2359,

Color Blindness Simulation

Color vision deficiency is a very complex topic, and I could not describe the different causes any better than Wikipedia does, so if you want to learn more, you should check out their [article about color blindness](#).

Dichromacy



Original Color

58.1792, 6.2359, 12.9741

Protanopia

58.2651, -3.4347, 11.3749

Deuteranopia

58.3108, 3.8344, 13.0649



Tritanopia

58.3330, 12.1914, 3.2795

Trichromacy



Original Color

58.1792, 6.2359, 12.9741

Protanomaly

58.0414, 0.1746, 11.5918

Deuteranomaly

58.1374, 4.6801, 12.9045

Tritanomaly

58.2362, 9.9882, 7.1114

Monochromacy



Original Color

58.1792, 6.2359, 12.9741

Achromatopsia

58.8816, -3.1418, 3.1991

Achromatomaly

58.5694, -0.2719, 6.8763

CSS Examples

Text

The CSS property to change the color of the text to HunterLab 58.1792, 6.2359, 12.9741 is called "color". The color property can be set on classes, ids or directly on the HTML element.

This example shows how text in the color `rgb(185, 150, 134)` looks like.

```
.text, #text, p{  
    color:rgb(185, 150, 134)  
}
```

If you want to add a text shadow in that color use the text-shadow property, you can generate a text shadow directly with our [CSS Text Shadow Generator](#).

Here you see how black text with a 4 pixel rgb(185, 150, 134) colored shadow looks like.

```
.shadow{ text-shadow: 4px 4px 2px rgb(185, 150, 134) }
```

Border

The CSS property to change the border of an element to HunterLab 58.1792, 6.2359, 12.9741 is called "border". The border property can be set on classes, ids or directly on the HTML element.

This example shows the color as border, it can be applied via the CSS property "border" or "border-color".

```
.border, #border, table{ border:4px solid rgb(185, 150, 134) }
```


If only the border color should be changed use the property `border-color`.

```
.border{ border-color:rgb(185, 150, 134) }
```

If you want to add a box shadow in that color use:

Here you see how a box with a 4 pixel `rgb(185, 150, 134)` colored shadow looks like.

```
.boxshadow{ -moz-box-shadow:4px 4px 4px  
4px rgb(185, 150, 134); -webkit-box-  
shadow:4px 4px 4px 4px rgb(185, 150, 134);  
box-shadow:4px 4px 4px 4px rgb(185, 150,  
134) }
```

Background

The CSS property to change the background color of an element to HunterLab 58.1792, 6.2359, 12.9741 is called "background". The background property can be set on classes, ids or directly on the HTML element.

```
.background, #background, body{  
background: rgb(185, 150, 134) }
```

If only the background color should be changed can be used:

```
.background{ background-color: rgb(185,  
150, 134) }
```

This example shows the color as background, it is applied via the CSS property "background".

To optimize and compress your CSS code, you can use our [online CSS compressor and optimizer](#) based on csstidy. If you want to create a linear or radial gradient as background or border, check our [CSS Gradient Generator](#).

Hey! You found this booklet interesting? Support Converting Colors with the new Membership Option!

The pro membership hides all ads, plus gives you double the colors in the color bucket, and more awesome pro features!

[Learn more, Memberships starting at \\$2.50/m!](#)

**Follow me
on Twitter!**

@ConvertingColor