

Converting Colors

HunterLab(58.1912, 7.6034,
9.8885)

Have a look what the booklet for
HunterLab(58.1912, 7.6034, 9.8885)
contains.

HunterLab(58.1052, 7.7948, 9.8276)	3
<i>Conversions</i>	4
<i>Details</i>	6
<i>Harmonies</i>	12
<i>Previews</i>	24
<i>Color Blindness Simulation</i>	28
<i>CSS Examples</i>	31

Color

**HunterLab(58.1052, 7.7948,
9.8276)**

Conversions

Conversions Part 1

Format	Color
Hex	B9958E
RGB	185, 149, 142
RGB Percent	73%, 58%, 56%
CMY	0.2745, 0.4157, 0.4431
CMYK	0.00, 0.19, 0.23, 0.27
HSL	10°, 23%, 64%
HSV	10°, 23%, 73%
XYZ	35.6375, 33.7621, 30.2296
YIQ	158.9660, 23.7030, 5.4550

Conversions

Conversions Part 2

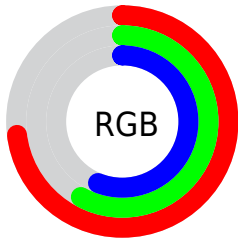
Format	Color
RYB	185, 150, 142
Decimal	12162446
CIELab	64.77, 12.38, 8.79
CIELCh	65, 15.186, 35.378
Yxy	33.7637, 0.3577, 0.3389
Android (android.graphics.Color)	4290352526 (0xFFB9958E)
YUV	158.9660, -8.3642, 22.8318
Hunter-Lab	58.1052, 7.7948, 9.8276

Details

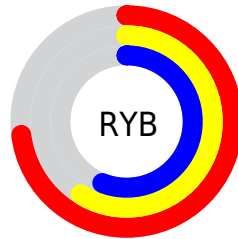
The HunterLab color **58.1052, 7.7948, 9.8276** is a light color, and the websafe version is hex **CC9999**. A complement of this color would be **64.1040, -12.4057, -3.1688**, and the grayscale version is **58.8950, -3.1425, 3.1999**.

A 20% lighter version of the original color is **80.9782, 8.0431, 11.8018**, and **37.8594, 7.5777, 7.6048** is the 20% darker color. If you saturate the color by 10%, you get **53.5482, 13.2037, 12.2966**, and if you desaturate by 10%, it is **62.9263, 2.6654, 7.2686**.

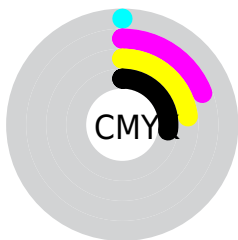
Distribution



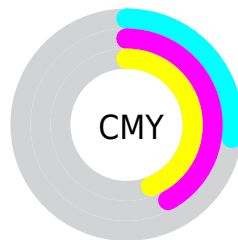
- Red (73%)
- Green (58%)
- Blue (56%)



- Red (73%)
- Yellow (59%)
- Blue (56%)



- Cyan (0%)
- Magenta (19%)
- Yellow (23%)
- Black (27%)



- Cyan (27%)
- Magenta (42%)
- Yellow (44%)

Brightness & Saturation Gradients

These gradients show how the HunterLab color 58.1052, 7.7948, 9.8276 changes by changing the brightness by 10 percent. The first figure shows a shift by +10% for each color and the second figure -10%.

Similar to the brightness gradients but the following saturation gradients show a change of the HunterLab color 58.1052, 7.7948, 9.8276 by changing the saturation by 10% instead.

■ 58.1052, 7.7948,
9.8276

■ 58.1052, 7.7948,
9.8276

178.6273, 6.0113,
19.7483

■ 47.6572, 7.7048,
8.7769

■ 80.9728, 7.7612,
11.9485

■ 37.9224, 7.5358,
7.7243

■ 93.3196, 7.6550,
13.0226

■ 28.9589, 7.2729,
6.6624

106.2371, 7.4951,
14.1087

■ 20.8400, 6.8985,
5.5772

119.7010, 7.2856,
15.2078

■ 13.6647, 6.3871,
4.4426

133.6901, 7.0299,
16.3208

■ 7.2703, 7.0329,
5.0892

148.1853, 6.7306,

0.0000, NaN, NaN

17.4483

0.0000, NaN, NaN

163.1695, 6.3904,
18.5907

0.0000, NaN, NaN

■ 58.1052, 7.7948,
9.8276

■ 58.1052, 7.7948,
9.8276

■ 53.5482, 13.2037,
12.2966

■ 62.9263, 2.6654,
7.2686

■ 49.2934, 18.8940,
14.6299

■ 67.9727, -2.1941,
4.6454

■ 45.3920, 24.8227,
16.7664

■ 73.2172, -6.8109,
1.9772

■ 41.9015, 30.8886,
18.6217

■ 78.6365, -11.2127,
-0.7241

■ 38.8840, 36.9043,
20.0906

■ 84.2113, -15.4269,
-3.4512

■ 36.4001, 42.5816,
21.0634

■ 89.9258, -19.4790,
-6.1997

■ 34.4967, 47.5493,
21.4633

■ 94.3686, -25.5175,
-1.7375

■ 33.5403, 50.2728,
21.5475

Harmonies

Analogous

The Analogous color harmony consists of three colors that are next to each other on the color wheel.



58.1065, 10.3053, 4.3014



58.1052, 7.7948, 9.8276



58.1065, 2.3691, 13.2491

Triad

The Triadic color harmony groups three colors that are evenly spaced from another and form a triangle on the color wheel.



58.1065, 7.7928, 9.8285



58.1065, -14.3716, 8.0466



58.1065, -1.8894, -10.4287

Complementary

The Complementary color scheme is a pair of colors which are on the opposite of each other on the color wheel.



58.1052, 7.7948, 9.8276



64.1040, -12.4057, -3.1688

Split Complementary

Split-complementary colors differ from the complementary color scheme. The scheme consists of three colors, the original color and two neighbors of the complement color.



58.1065, -8.3808, -9.1350



58.1052, 7.7948, 9.8276



58.1065, -15.3969, 2.0009

Square

The Square scheme is like the rectangle color scheme, but the four colors are evenly spaced on the color wheel.



58.1065, 7.7928, 9.8285



58.1065, -10.3852, 12.3050



58.1065, -13.2517, -4.3998



58.1065, 4.5553, -7.7583

Rectangle

The Rectangle color scheme consists of four colors that form a rectangle on the color wheel.



58.1052, 7.7948, 9.8276



58.1065, -2.0605, 14.1130



58.1065, -13.2517, -4.3998



58.1065, -4.1393, -10.4460

Sweetspot

The Sweet Spot groups the original color and five complimentary colors.



58.1065, 7.7928, 9.8285



88.3181, -0.4590, 7.5842



57.3561, 17.1789, -8.1965



40.8207, -0.0356, 3.6178



96.5975, -5.1542, 5.2483



43.2801, -2.3093, 2.3515

Same Dimension

The Same Dimension uses a secret algorithm to generate beautiful new colors.



58.1065, 7.7928, 9.8285



74.5344, 14.1572, 14.8941



64.0299, -2.6169, 15.7120



30.4011, 0.3442, 2.9284



27.8079, 41.0630, 17.8539



5.8886, 5.7560, 3.7293

Inverse Universe

The Inverse Universe completely reimagines the original color for something new.



64.1040, -12.4057, -3.1688



84.2740, -18.7404, -6.2330



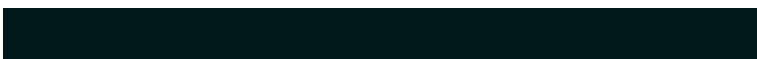
57.7796, -2.3236, -11.5361



31.5513, -3.5124, 0.4394



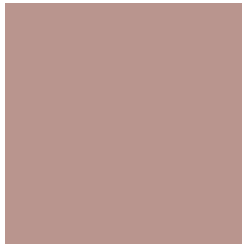
42.9042, -16.9444, -17.0485



8.4627, -3.7098, -2.5692

Previews

White Background



This preview shows how the HunterLab color 58.1052, 7.7948, 9.8276 looks on a white background.

Color Contrast Check

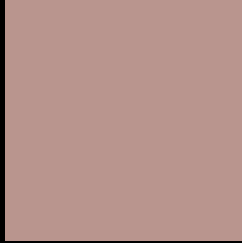
Large Text (above 18pt) WCAG AA × Fail

Any Text WCAG AA × Fail

Large Text (above 18pt) WCAG AAA × Fail

Any Text WCAG AAA × Fail

Black Background



This preview shows how the HunterLab color 58.1052, 7.7948, 9.8276 looks on a black background.

Color Contrast Check

Large Text (above 18pt) WCAG AA ✓ Pass

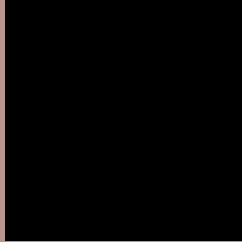
Any Text WCAG AA ✓ Pass

Large Text (above 18pt) WCAG AAA ✓ Pass

Any Text WCAG AAA ✓ Pass

If you want to check with other color combinations, try the [Color Contrast Checker](#).

HunterLab 58.1052, 7.7948, 9.8276 Background



This preview shows how black text looks on a background with the HunterLab color 58.1052, 7.7948, 9.8276.



This preview shows how white text looks on a background with the HunterLab color 58.1052, 7.7948,

9.8276.

Color Blindness Simulation

Color vision deficiency is a very complex topic, and I could not describe the different causes any better than Wikipedia does, so if you want to learn more, you should check out their [article about color blindness](#).

Dichromacy



Original Color

58.1052, 7.7948, 9.8276

Protanopia

58.2888, -2.9401, 8.2045

Deuteranopia

58.1761, 3.7284, 10.2313



Tritanopia

58.2244, 11.8418, 3.1452

Trichromacy



Original Color

58.1052, 7.7948, 9.8276

Protanomaly

58.1493, 0.9533, 8.5345

Deuteranomaly

58.2066, 5.2582, 10.2903

Tritanomaly

58.2116, 10.0750, 5.7900

Monochromacy



Original Color

58.1052, 7.7948, 9.8276

Achromatopsia

58.8816, -3.1418, 3.1991

Achromatomaly

58.3673, 0.6732, 5.3640

CSS Examples

Text

The CSS property to change the color of the text to HunterLab 58.1052, 7.7948, 9.8276 is called "color". The color property can be set on classes, ids or directly on the HTML element.

This example shows how text in the color `rgb(185, 149, 142)` looks like.

```
.text, #text, p{  
    color:rgb(185, 149, 142)  
}
```

If you want to add a text shadow in that color use the text-shadow property, you can generate a text shadow directly with our [CSS Text Shadow Generator](#).

Here you see how black text with a 4 pixel rgb(185, 149, 142) colored shadow looks like.

```
.shadow{ text-shadow: 4px 4px 2px rgb(185, 149, 142) }
```

Border

The CSS property to change the border of an element to HunterLab 58.1052, 7.7948, 9.8276 is called "border".

The border property can be set on classes, ids or directly on the HTML element.

This example shows the color as border, it can be applied via the CSS property "border" or "border-color".

```
.border, #border, table{ border:4px solid rgb(185, 149, 142) }
```


If only the border color should be changed use the property `border-color`.

```
.border{ border-color:rgb(185, 149, 142) }
```

If you want to add a box shadow in that color use:

Here you see how a box with a 4 pixel `rgb(185, 149, 142)` colored shadow looks like.

```
.boxshadow{ -moz-box-shadow:4px 4px 4px 4px rgb(185, 149, 142); -webkit-box-shadow:4px 4px 4px 4px rgb(185, 149, 142); box-shadow:4px 4px 4px 4px rgb(185, 149, 142) }
```

Background

The CSS property to change the background color of an element to HunterLab 58.1052, 7.7948, 9.8276 is called "background". The background property can be set on classes, ids or directly on the HTML element.

```
.background, #background, body{  
background: rgb(185, 149, 142) }
```

If only the background color should be changed can be used:

```
.background{ background-color: rgb(185,  
149, 142) }
```

This example shows the color as background, it is applied via the CSS property "background".

To optimize and compress your CSS code, you can use our [online CSS compressor and optimizer](#) based on csstidy. If you want to create a linear or radial gradient as background or border, check our [CSS Gradient Generator](#).

Hey! You found this booklet interesting? Support Converting Colors with the new Membership Option!

The pro membership hides all ads, plus gives you double the colors in the color bucket, and more awesome pro features!

[Learn more, Memberships starting at \\$2.50/m!](#)

**Follow me
on Twitter!**

@ConvertingColor