

Converting Colors

HunterLab(58.2429, 18.9345,
10.9635)

Have a look what the booklet for
HunterLab(58.2429, 18.9345,
10.9635) contains.

HunterLab(58.2429, 18.9345, 10.9635)	3
<i>Conversions</i>	4
<i>Details</i>	6
<i>Harmonies</i>	12
<i>Previews</i>	24
<i>Color Blindness Simulation</i>	28
<i>CSS Examples</i>	31

Color

**HunterLab(58.2429, 18.9345,
10.9635)**

Conversions

Conversions Part 1

Format	Color
Hex	CD8D8C
RGB	205, 141, 140
RGB Percent	80%, 55%, 55%
CMY	0.1961, 0.4470, 0.4510
CMYK	0.00, 0.31, 0.32, 0.20
HSL	1°, 39%, 68%
HSV	1°, 32%, 80%
XYZ	39.4354, 33.9224, 29.2801
YIQ	160.0220, 38.4650, 13.2570

Conversions

Conversions Part 2

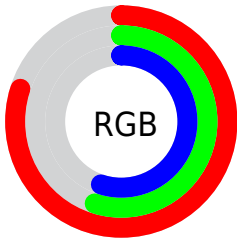
Format	Color
R _Y B	205, 141, 140
Decimal	13471116
CIE Lab	64.90, 24.21, 10.39
CIE LCh	65, 26.346, 23.234
Yxy	33.9240, 0.3842, 0.3305
Android (android.graphics.Color)	4291661196 (0xFFCD8D8C)
YUV	160.0220, -9.8708, 39.4457
Hunter-Lab	58.2429, 18.9345, 10.9635

Details

The HunterLab color **58.2429, 18.9345, 10.9635** is a light color, and the websafe version is hex **CC9999**. A complement of this color would be **72.9158, -21.2926, -2.4069**, and the grayscale version is **59.3283, -3.1656, 3.2234**.

A 20% lighter version of the original color is **80.1157, 16.8572, 11.8904**, and **38.0001, 17.5640, 8.6308** is the 20% darker color. If you saturate the color by 10%, you get **52.8722, 26.8265, 13.3006**, and if you desaturate by 10%, it is **64.1019, 11.3029, 8.7230**.

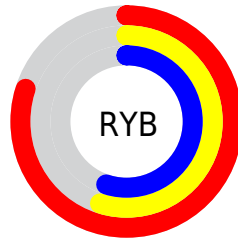
Distribution



Red (80%)

Green (55%)

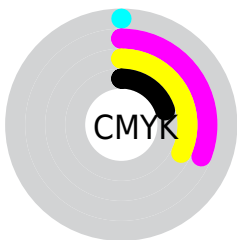
Blue (55%)



Red (80%)

Yellow (55%)

Blue (55%)

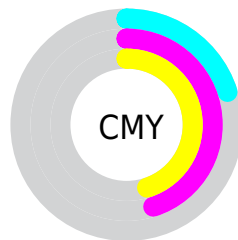


Cyan (0%)

Magenta (31%)

Yellow (32%)

Black (20%)



Cyan (20%)

Magenta (45%)

Yellow (45%)

Brightness & Saturation Gradients

These gradients show how the HunterLab color 58.2429, 18.9345, 10.9635 changes by changing the brightness by 10 percent. The first figure shows a shift by +10% for each color and the second figure -10%.

Similar to the brightness gradients but the following saturation gradients show a change of the HunterLab color 58.2429, 18.9345, 10.9635 by changing the saturation by 10% instead.

■ 58.2429, 18.9345,
10.9635

■ 58.2429, 18.9345,
10.9635

178.8275, 21.3554,
21.5240

■ 47.7862, 18.2813,
9.8194

■ 81.1267, 19.9546,
13.2527

■ 38.0419, 17.5223,
8.6650

■ 93.4810, 20.3446,
14.4037

■ 29.0682, 16.6400,
7.4907

■ 106.4055, 20.6632,
15.5627

■ 20.9379, 15.6170,
6.2784

119.8763, 20.9160,
16.7315

■ 13.7498, 14.4373,
4.9955

133.8719, 21.1077,
17.9111

■ 7.3668, 14.6239,
5.1568

148.3735, 21.2426,

0.0000, INF, NaN

19.1027

0.0000, NaN, NaN

163.3638, 21.3241,
20.3068

0.0000, NaN, NaN

■ 58.2429, 18.9345,
10.9635

■ 58.2429, 18.9345,
10.9635

■ 52.8722, 26.8265,
13.3006

■ 64.1019, 11.3029,
8.7230

■ 48.0806, 34.8369,
15.6802

■ 70.3666, 3.9912,
6.5944

■ 43.9781, 42.6615,
18.0012

■ 76.9756, -3.0047,
4.5786

■ 40.6755, 49.8093,
20.1010

■ 83.8790, -9.7116,
2.6667

■ 38.2616, 55.6476,
21.7743

■ 91.0372, -16.1655,
0.8467

■ 36.7650, 59.5971,
22.8425

■ 95.7701, -20.3789,
0.0860

■ 36.1219, 61.3707,
23.3326

Harmonies

Analogous

The Analogous color harmony consists of three colors that are next to each other on the color wheel.



58.2443, 20.8408, 0.6038



58.2429, 18.9345, 10.9635



58.2443, 10.9105, 17.7860

Triad

The Triadic color harmony groups three colors that are evenly spaced from another and form a triangle on the color wheel.



58.2443, 18.9320, 10.9645



58.2443, -19.9890, 14.5357



58.2443, -5.7263, -22.2036

Complementary

The Complementary color scheme is a pair of colors which are on the opposite of each other on the color wheel.



58.2429, 18.9345, 10.9635



72.9158, -21.2926, -2.4069

Split Complementary

Split-complementary colors differ from the complementary color scheme. The scheme consists of three colors, the original color and two neighbors of the complement color.



58.2443, -15.9198, -16.6102



58.2429, 18.9345, 10.9635



58.2443, -23.7252, 5.6252

Square

The Square scheme is like the rectangle color scheme, but the four colors are evenly spaced on the color wheel.



58.2443, 18.9320, 10.9645



58.2443, -11.6855, 19.5471



58.2443, -22.2961, -5.8762



58.2443, 5.9904, -20.0023

Rectangle

The Rectangle color scheme consists of four colors that form a rectangle on the color wheel.



58.2429, 18.9345, 10.9635



58.2443, 3.4919, 20.1036



58.2443, -22.2961, -5.8762



58.2443, -9.4320, -21.1416

Sweetspot

The Sweet Spot groups the original color and five complimentary colors.



58.2443, 18.9320, 10.9645



91.3673, 3.6674, 8.0228



60.1194, 30.1062, -19.3886



41.7249, 2.2970, 3.8855

0.0000, NaN, NaN



46.2646, -2.4686, 2.5136

Same Dimension

The Same Dimension uses a secret algorithm to generate beautiful new colors.



58.2443, 18.9320, 10.9645



69.8099, 31.0479, 16.0486



66.7597, 2.8445, 19.1516



33.5275, 1.0939, 2.8542



28.5230, 48.3455, 18.4221



6.5549, 10.7224, 4.2268

Inverse Universe

The Inverse Universe completely reimagines the original color for something new.



72.9158, -21.2926, -2.4069



92.2322, -30.8594, -4.5243



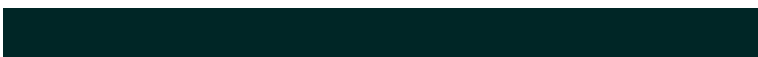
62.9915, -6.2864, -15.6588



35.6316, -4.6055, 0.9587



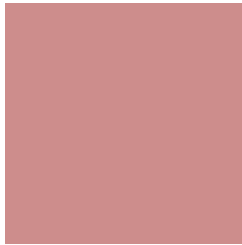
53.8568, -27.9931, -6.8874



12.2722, -6.4055, -1.5117

Previews

White Background



This preview shows how the HunterLab color 58.2429, 18.9345, 10.9635 looks on a white background.

Color Contrast Check

Large Text (above 18pt) WCAG AA × Fail

Any Text WCAG AA × Fail

Large Text (above 18pt) WCAG AAA × Fail

Any Text WCAG AAA × Fail

Black Background



This preview shows how the HunterLab color 58.2429, 18.9345, 10.9635 looks on a black background.

Color Contrast Check

Large Text (above 18pt) WCAG AA ✓ Pass

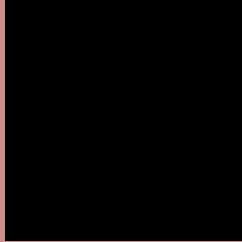
Any Text WCAG AA ✓ Pass

Large Text (above 18pt) WCAG AAA ✓ Pass

Any Text WCAG AAA ✓ Pass

If you want to check with other color combinations, try the [Color Contrast Checker](#).

HunterLab 58.2429, 18.9345, 10.9635 Background



This preview shows how black text looks on a background with the HunterLab color 58.2429, 18.9345, 10.9635.



This preview shows how white text looks on a background with the HunterLab color 58.2429, 18.9345,

Color Blindness Simulation

Color vision deficiency is a very complex topic, and I could not describe the different causes any better than Wikipedia does, so if you want to learn more, you should check out their [article about color blindness](#).

Dichromacy



Original Color

58.2429, 18.9345, 10.9635

Protanopia

58.3699, -2.4963, 7.0415

Deuteranopia

58.3050, 4.0102, 11.5465



Tritanopia

58.1284, 21.6942, 6.7674

Trichromacy



Original Color

58.2429, 18.9345, 10.9635

Protanomaly

58.0289, 4.9271, 8.0583

Deuteranomaly

58.1917, 9.3178, 11.1334

Tritanomaly

58.2695, 20.6238, 8.5960

Monochromacy



Original Color

58.2429, 18.9345, 10.9635

Achromatopsia

59.2902, -3.1636, 3.2213

Achromatomaly

58.5769, 4.2839, 5.6659

CSS Examples

Text

The CSS property to change the color of the text to HunterLab 58.2429, 18.9345, 10.9635 is called "color". The color property can be set on classes, ids or directly on the HTML element.

This example shows how text in the color `rgb(205, 141, 140)` looks like.

```
.text, #text, p{  
    color:rgb(205, 141, 140)  
}
```

If you want to add a text shadow in that color use the text-shadow property, you can generate a text shadow directly with our [CSS Text Shadow Generator](#).

Here you see how black text with a 4 pixel rgb(205, 141, 140) colored shadow looks like.

```
.shadow{ text-shadow: 4px 4px 2px rgb(205, 141, 140) }
```

Border

The CSS property to change the border of an element to HunterLab 58.2429, 18.9345, 10.9635 is called "border". The border property can be set on classes, ids or directly on the HTML element.

This example shows the color as border, it can be applied via the CSS property "border" or "border-color".

```
.border, #border, table{ border:4px solid rgb(205, 141, 140) }
```


If only the border color should be changed use the property `border-color`.

```
.border{ border-color:rgb(205, 141, 140) }
```

If you want to add a box shadow in that color use:

Here you see how a box with a 4 pixel `rgb(205, 141, 140)` colored shadow looks like.

```
.boxshadow{ -moz-box-shadow:4px 4px 4px  
4px rgb(205, 141, 140); -webkit-box-  
shadow:4px 4px 4px 4px rgb(205, 141, 140);  
box-shadow:4px 4px 4px 4px rgb(205, 141,  
140) }
```

Background

The CSS property to change the background color of an element to HunterLab 58.2429, 18.9345, 10.9635 is called "background". The background property can be set on classes, ids or directly on the HTML element.

```
.background, #background, body{  
background: rgb(205, 141, 140) }
```

If only the background color should be changed can be used:

```
.background{ background-color: rgb(205,  
141, 140) }
```

This example shows the color as background, it is applied via the CSS property "background".

To optimize and compress your CSS code, you can use our [online CSS compressor and optimizer](#) based on csstidy. If you want to create a linear or radial gradient as background or border, check our [CSS Gradient Generator](#).

Hey! You found this booklet interesting? Support Converting Colors with the new Membership Option!

The pro membership hides all ads, plus gives you double the colors in the color bucket, and more awesome pro features!

[Learn more, Memberships starting at \\$2.50/m!](#)

**Follow me
on Twitter!**

@ConvertingColor