

Converting Colors

HunterLab(58.3143, 32.3754,
-4.2146)

Have a look what the booklet for
HunterLab(58.3143, 32.3754,
-4.2146) contains.

HunterLab(58.3143, 32.3754, -4.2146)	3
<i>Conversions</i>	4
<i>Details</i>	6
<i>Harmonies</i>	12
<i>Previews</i>	24
<i>Color Blindness Simulation</i>	28
<i>CSS Examples</i>	31

Color

**HunterLab(58.3143, 32.3754,
-4.2146)**

Conversions

Conversions Part 1

Format	Color
Hex	D784AE
RGB	215, 132, 174
RGB Percent	84%, 52%, 68%
CMY	0.1569, 0.4823, 0.3176
CMYK	0.00, 0.39, 0.19, 0.16
HSL	330°, 51%, 68%
HSV	330°, 39%, 84%
XYZ	43.9155, 34.0056, 44.2935
YIQ	161.6050, 35.9860, 30.6580

Conversions

Conversions Part 2

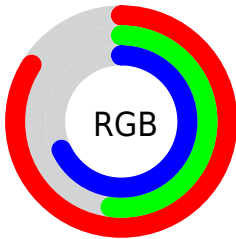
Format	Color
R _Y B	215, 132, 174
Decimal	14124206
CIE Lab	64.97, 37.54, -8.59
CIE LCh	65, 38.514, 347.110
Yxy	34.0072, 0.3593, 0.2783
Android (android.graphics.Color)	4292314286 (0xFFD784AE)
YUV	161.6050, 6.1107, 46.8274
Hunter-Lab	58.3143, 32.3754, -4.2146

Details

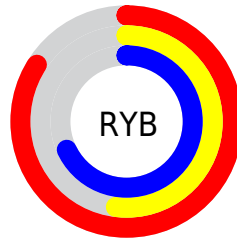
The HunterLab color $58.3143, 32.3754, -4.2146$ is a light color, and the websafe version is hex $CC6699$. A complement of this color would be $75.1827, -33.3711, 14.5631$, and the grayscale version is $59.9136, -3.1968, 3.2552$.

A 20% lighter version of the original color is $78.7623, 27.4749, -6.7881$, and $38.0964, 30.2249, -4.6514$ is the 20% darker color. If you saturate the color by 10%, you get $53.2601, 41.8596, -5.2208$, and if you desaturate by 10%, it is $63.9392, 22.7107, -2.5710$.

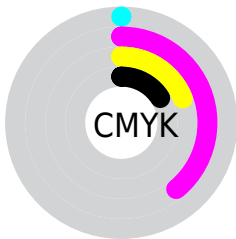
Distribution



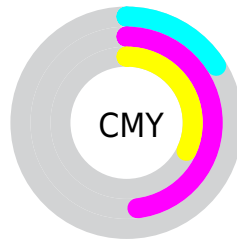
- Red (84%)
- Green (52%)
- Blue (68%)



- Red (84%)
- Yellow (52%)
- Blue (68%)



- Cyan (0%)
- Magenta (39%)
- Yellow (19%)
- Black (16%)



- Cyan (16%)
- Magenta (48%)
- Yellow (32%)

Brightness & Saturation Gradients

These gradients show how the HunterLab color 58.3143, 32.3754, -4.2146 changes by changing the brightness by 10 percent. The first figure shows a shift by +10% for each color and the second figure -10%.

Similar to the brightness gradients but the following saturation gradients show a change of the HunterLab color 58.3143, 32.3754, -4.2146 by changing the saturation by 10% instead.

■ 58.3143, 32.3754,
-4.2146

■ 58.3143, 32.3754,
-4.2146

178.9313, 39.2444,
-0.6581

■ 47.8530, 31.1560,
-4.3705

■ 81.2064, 34.4827,
-3.7312

■ 38.1038, 29.8185,
-4.4640

■ 93.5645, 35.3931,
-3.4154

■ 29.1248, 28.3532,
-4.4863

■ 106.4928, 36.2173,
-3.0543

■ 20.9886, 26.7622,
-4.4277

119.9671, 36.9617,
-2.6509

■ 13.7939, 25.0846,
-4.2768

133.9661, 37.6320,
-2.2076

■ 7.4163, 25.3335,
-4.5555

148.4710, 38.2331,

0.0000, INF, NaN

-1.7265

0.0000, NaN, NaN

163.4645, 38.7693,
-1.2095

0.0000, NaN, NaN

■ 58.3143, 32.3754,
-4.2146

■ 58.3143, 32.3754,
-4.2146

■ 53.2601, 41.8596,
-5.2208

■ 63.9392, 22.7107,
-2.5710

■ 48.8720, 50.8076,
-5.4304

■ 70.0431, 13.0860,
-0.4361

■ 45.2537, 58.6823,
-4.6874

■ 76.5540, 3.6065,
2.0782

■ 42.4903, 64.8343,
-2.9019

■ 83.4122, -5.6855,
4.8865

■ 40.6194, 68.6878,
-0.1228

■ 90.5696, -14.7837,
7.9252

■ 39.5527, 70.1727,
3.3699

■ 95.9813, -20.7189,
8.9432

■ 39.4294, 70.3127,
3.8607

■ 96.3152, -18.8393,
4.1765

■ 96.5335, -17.6135,
1.0679

Harmonies

Analogous

The Analogous color harmony consists of three colors that are next to each other on the color wheel.



58.3157, 22.8763, -22.2635



58.3143, 32.3754, -4.2146



58.3157, 31.6086, 11.6175

Triad

The Triadic color harmony groups three colors that are evenly spaced from another and form a triangle on the color wheel.



58.3157, 32.3729, -4.2133



58.3157, -12.4419, 25.7920



58.3157, -23.7751, -24.5801

Complementary

The Complementary color scheme is a pair of colors which are on the opposite of each other on the color wheel.



58.3143, 32.3754, -4.2146



75.1827, -33.3711, 14.5631

Split Complementary

Split-complementary colors differ from the complementary color scheme. The scheme consists of three colors, the original color and two neighbors of the complement color.



58.3157, -31.2343, -6.7571



58.3143, 32.3754, -4.2146



58.3157, -25.2250, 20.6482

Square

The Square scheme is like the rectangle color scheme, but the four colors are evenly spaced on the color wheel.



58.3157, 32.3729, -4.2133



58.3157, 4.3737, 26.1117



58.3157, -31.7326, 9.7062



58.3157, -10.2433, -36.1004

Rectangle

The Rectangle color scheme consists of four colors that form a rectangle on the color wheel.



58.3143, 32.3754, -4.2146



58.3157, 25.3730, 19.0182



58.3157, -31.7326, 9.7062



58.3157, -27.0047, -18.9283

Sweetspot

The Sweet Spot groups the original color and five complimentary colors.



58.3157, 32.3729, -4.2133



90.0394, 8.3915, 1.4039



54.9496, 25.8409, -35.0565



41.1719, 4.5830, 0.4611

0.0000, NaN, NaN



46.2646, -2.4686, 2.5136

Same Dimension

The Same Dimension uses a secret algorithm to generate beautiful new colors.



58.3157, 32.3729, -4.2133



65.8670, 48.3348, -6.1446



57.1449, 26.6195, 12.5088



35.3901, 2.0365, 0.8664



30.5291, 54.5066, 2.4827



7.6083, 13.7875, -0.9600

Inverse Universe

The Inverse Universe completely reimagines the original color for something new.



58.3157, 32.3729, -4.2133



65.8670, 48.3348, -6.1446



76.3823, -26.3903, -2.5791



35.3901, 2.0365, 0.8664



30.5291, 54.5066, 2.4827



7.6083, 13.7875, -0.9600

Previews

White Background



This preview shows how the HunterLab color 58.3143, 32.3754, -4.2146 looks on a white background.

Color Contrast Check

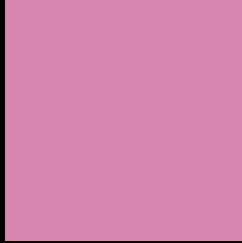
Large Text (above 18pt) WCAG AA × Fail

Any Text WCAG AA × Fail

Large Text (above 18pt) WCAG AAA × Fail

Any Text WCAG AAA × Fail

Black Background



This preview shows how the HunterLab color 58.3143, 32.3754, -4.2146 looks on a black background.

Color Contrast Check

Large Text (above 18pt) WCAG AA ✓ Pass

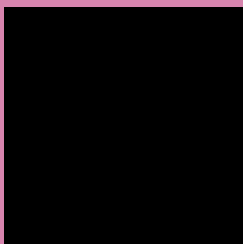
Any Text WCAG AA ✓ Pass

Large Text (above 18pt) WCAG AAA ✓ Pass

Any Text WCAG AAA ✓ Pass

If you want to check with other color combinations, try the [Color Contrast Checker](#).

HunterLab 58.3143, 32.3754, -4.2146 Background



This preview shows how black text looks on a background with the HunterLab color 58.3143, 32.3754, -4.2146.



This preview shows how white text looks on a background with the HunterLab color 58.3143, 32.3754, -4.2146.

-4.2146.

Color Blindness Simulation

Color vision deficiency is a very complex topic, and I could not describe the different causes any better than Wikipedia does, so if you want to learn more, you should check out their [article about color blindness](#).

Dichromacy



Original Color

58.3143, 32.3754, -4.2146

Protanopia

58.6609, 1.1487, -13.0710

Deuteranopia

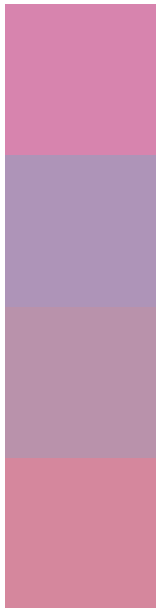
58.5989, 3.9439, -2.3013



Tritanopia

58.3052, 24.5993, 8.2880

Trichromacy



Original Color

58.3143, 32.3754, -4.2146

Protanomaly

57.9993, 11.4414, -10.4174

Deuteranomaly

58.1484, 13.7764, -3.2126

Tritanomaly

58.2309, 27.4254, 3.8833

Monochromacy



Original Color

58.3143, 32.3754, -4.2146

Achromatopsia

60.1088, -3.2073, 3.2658

Achromatomaly

58.9153, 9.0167, 0.1554

CSS Examples

Text

The CSS property to change the color of the text to HunterLab 58.3143, 32.3754, -4.2146 is called "color". The color property can be set on classes, ids or directly on the HTML element.

This example shows how text in the color `rgb(215, 132, 174)` looks like.

```
.text, #text, p{  
    color:rgb(215, 132, 174)  
}
```

If you want to add a text shadow in that color use the text-shadow property, you can generate a text shadow directly with our [CSS Text Shadow Generator](#).

Here you see how black text with a 4 pixel rgb(215, 132, 174) colored shadow looks like.

```
.shadow{ text-shadow: 4px 4px 2px rgb(215, 132, 174) }
```

Border

The CSS property to change the border of an element to HunterLab 58.3143, 32.3754, -4.2146 is called "border". The border property can be set on classes, ids or directly on the HTML element.

This example shows the color as border, it can be applied via the CSS property "border" or "border-color".

```
.border, #border, table{ border:4px solid rgb(215, 132, 174) }
```


If only the border color should be changed use the property `border-color`.

```
.border{ border-color:rgb(215, 132, 174) }
```

If you want to add a box shadow in that color use:

Here you see how a box with a 4 pixel `rgb(215, 132, 174)` colored shadow looks like.

```
.boxshadow{ -moz-box-shadow:4px 4px 4px  
4px rgb(215, 132, 174); -webkit-box-  
shadow:4px 4px 4px 4px rgb(215, 132, 174);  
box-shadow:4px 4px 4px 4px rgb(215, 132,  
174) }
```

Background

The CSS property to change the background color of an element to HunterLab 58.3143, 32.3754, -4.2146 is called "background". The background property can be set on classes, ids or directly on the HTML element.

```
.background, #background, body{  
background: rgb(215, 132, 174) }
```

If only the background color should be changed can be used:

```
.background{ background-color: rgb(215,  
132, 174) }
```

This example shows the color as background, it is applied via the CSS property "background".

To optimize and compress your CSS code, you can use our [online CSS compressor and optimizer](#) based on csstidy. If you want to create a linear or radial gradient as background or border, check our [CSS Gradient Generator](#).

Hey! You found this booklet interesting? Support Converting Colors with the new Membership Option!

The pro membership hides all ads, plus gives you double the colors in the color bucket, and more awesome pro features!

[Learn more, Memberships starting at \\$2.50/m!](#)

**Follow me
on Twitter!**

@ConvertingColor