

Converting Colors

HunterLab(58.3490, 6.9753,
2.4331)

Have a look what the booklet for
HunterLab(58.3490, 6.9753, 2.4331)
contains.

HunterLab(58.4262, 7.0419, 2.3759)	3
<i>Conversions</i>	4
<i>Details</i>	6
<i>Harmonies</i>	12
<i>Previews</i>	24
<i>Color Blindness Simulation</i>	28
<i>CSS Examples</i>	31

Color

**HunterLab(58.4262, 7.0419,
2.3759)**

Conversions

Conversions Part 1

Format	Color
Hex	B297A0
RGB	178, 151, 160
RGB Percent	70%, 59%, 63%
CMY	0.3020, 0.4078, 0.3725
CMYK	0.00, 0.15, 0.10, 0.30
HSL	340°, 15%, 65%
HSV	340°, 15%, 70%
XYZ	35.7718, 34.1362, 37.9612
YIQ	160.0990, 13.2030, 8.5230

Conversions

Conversions Part 2

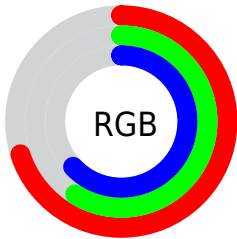
Format	Color
RYB	178, 151, 160
Decimal	11704224
CIELab	65.07, 11.55, -0.99
CIELCh	65, 11.596, 355.125
Yxy	34.1377, 0.3316, 0.3165
Android (android.graphics.Color)	4289894304 (0xFFB297A0)
YUV	160.0990, -0.0488, 15.6992
Hunter-Lab	58.4262, 7.0419, 2.3759

Details

The HunterLab color $58.4262, 7.0419, 2.3759$ is a light color, and the websafe version is hex $CC9999$. A complement of this color would be $64.2538, -12.8633, 4.7295$, and the grayscale version is $59.3281, -3.1656, 3.2234$.

A 20% lighter version of the original color is $81.2781, 7.1654, 3.3110$, and $38.1817, 6.9300, 1.1823$ is the 20% darker color. If you saturate the color by 10%, you get $53.3277, 14.2284, 1.8986$, and if you desaturate by 10%, it is $63.8293, 0.0077, 3.1386$.

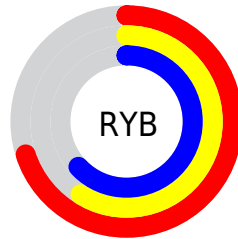
Distribution



Red (70%)

Green (59%)

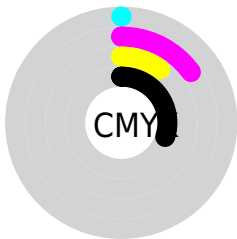
Blue (63%)



Red (70%)

Yellow (59%)

Blue (63%)

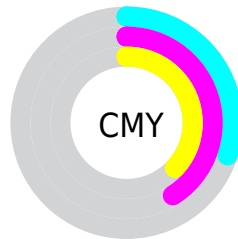


Cyan (0%)

Magenta (15%)

Yellow (10%)

Black (30%)



Cyan (30%)

Magenta (41%)

Yellow (37%)

Brightness & Saturation Gradients

These gradients show how the HunterLab color 58.4262, 7.0419, 2.3759 changes by changing the brightness by 10 percent. The first figure shows a shift by +10% for each color and the second figure -10%.

Similar to the brightness gradients but the following saturation gradients show a change of the HunterLab color 58.4262, 7.0419, 2.3759 by changing the saturation by 10% instead.

■ 58.4262, 7.0419,
2.3759

■ 58.4262, 7.0419,
2.3759

179.0938, 4.9419,
8.5858

■ 47.9577, 6.9959,
1.8575

■ 81.3313, 6.9279,
3.5312

■ 38.2009, 6.8733,
1.3804

■ 93.6954, 6.7840,
4.1615

■ 29.2135, 6.6602,
0.9498

106.6295, 6.5881,
4.8246

■ 21.0682, 6.3396,
0.5710

120.1093, 6.3440,
5.5190

■ 13.8631, 5.8867,
0.2516

134.1137, 6.0547,
6.2435

■ 7.4932, 6.3185,
-0.1373

148.6236, 5.7231,

0.0000, NaN, NaN

6.9968

0.0000, NaN, NaN

163.6221, 5.3514,
7.7779

0.0000, NaN, NaN

■ 58.4262, 7.0419,
2.3759

■ 58.4262, 7.0419,
2.3759

■ 53.3277, 14.2284,
1.8986

■ 63.8293, 0.0077,
3.1386

■ 48.5839, 21.5254,
1.7682

■ 69.4894, -6.8585,
4.1306

■ 44.2626, 28.8203,
2.0597

■ 75.3730, -13.5667,
5.3111

■ 40.4418, 35.9017,
2.8482

■ 81.4521, -20.1337,
6.6470

■ 37.2071, 42.4251,
4.1891

■ 87.7043, -26.5789,
8.1126

■ 34.6402, 47.9168,
6.0855

■ 93.1485, -31.6025,
8.6245

■ 32.7973, 51.8664,
8.4502

■ 93.5205, -29.4627,
3.3145

■ 31.6767, 53.9388,
11.0869

■ 93.9157, -27.1993,
-2.3038

■ 31.2796, 54.5874,
12.3045

■ 93.9175, -27.1887,
-2.3302

Harmonies

Analogous

The Analogous color harmony consists of three colors that are next to each other on the color wheel.



58.4275, 5.1973, -2.4457



58.4262, 7.0419, 2.3759



58.4275, 6.0847, 7.0273

Triad

The Triadic color harmony groups three colors that are evenly spaced from another and form a triangle on the color wheel.



58.4275, 7.0402, 2.3769



58.4275, -7.2517, 11.0569



58.4275, -8.6567, -5.0567

Complementary

The Complementary color scheme is a pair of colors which are on the opposite of each other on the color wheel.



58.4262, 7.0419, 2.3759



64.2538, -12.8633, 4.7295

Split Complementary

Split-complementary colors differ from the complementary color scheme. The scheme consists of three colors, the original color and two neighbors of the complement color.



58.4275, -11.7892, -0.9473



58.4262, 7.0419, 2.3759



58.4275, -10.9979, 8.2972

Square

The Square scheme is like the rectangle color scheme, but the four colors are evenly spaced on the color wheel.



58.4275, 7.0402, 2.3769



58.4275, -2.2796, 11.7817



58.4275, -12.6314, 3.9726



58.4275, -3.9570, -6.9671

Rectangle

The Rectangle color scheme consists of four colors that form a rectangle on the color wheel.



58.4262, 7.0419, 2.3759



58.4275, 4.0061, 9.4490



58.4275, -12.6314, 3.9726



58.4275, -9.9214, -3.8704

Sweetspot

The Sweet Spot groups the original color and five complimentary colors.



58.4275, 7.0402, 2.3769



86.0143, -0.0644, 4.2360



58.1242, 7.1987, -7.0228



40.2426, 0.2760, 1.9552



95.4677, -5.0939, 5.1869



42.2927, -2.2566, 2.2978

Same Dimension

The Same Dimension uses a secret algorithm to generate beautiful new colors.



58.4275, 7.0402, 2.3769



76.4737, 12.5040, 2.9534



59.4224, 3.4063, 7.4607



29.2411, 1.3827, 1.3261



26.4787, 46.2478, 10.1158



4.8136, 8.6303, 0.1115

Inverse Universe

The Inverse Universe completely reimagines the original color for something new.



58.4275, 7.0402, 2.3769



76.4737, 12.5040, 2.9534



63.1457, -9.1953, -0.7988



29.2411, 1.3827, 1.3261



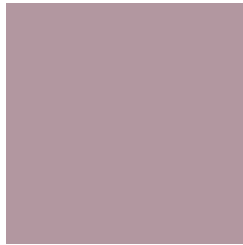
26.4787, 46.2478, 10.1158



4.8136, 8.6303, 0.1115

Previews

White Background



This preview shows how the HunterLab color 58.4262, 7.0419, 2.3759 looks on a white background.

Color Contrast Check

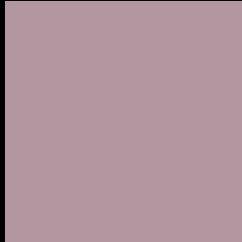
Large Text (above 18pt) WCAG AA × Fail

Any Text WCAG AA × Fail

Large Text (above 18pt) WCAG AAA × Fail

Any Text WCAG AAA × Fail

Black Background



This preview shows how the HunterLab color 58.4262, 7.0419, 2.3759 looks on a black background.

Color Contrast Check

Large Text (above 18pt) WCAG AA ✓ Pass

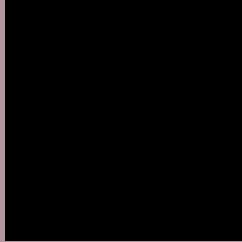
Any Text WCAG AA ✓ Pass

Large Text (above 18pt) WCAG AAA ✓ Pass

Any Text WCAG AAA ✓ Pass

If you want to check with other color combinations, try the [Color Contrast Checker](#).

HunterLab 58.4262, 7.0419, 2.3759 Background



This preview shows how black text looks on a background with the HunterLab color 58.4262, 7.0419, 2.3759.



This preview shows how white text looks on a background with the HunterLab color 58.4262, 7.0419,

2.3759.

Color Blindness Simulation

Color vision deficiency is a very complex topic, and I could not describe the different causes any better than Wikipedia does, so if you want to learn more, you should check out their [article about color blindness](#).

Dichromacy



Original Color

58.4262, 7.0419, 2.3759

Protanopia

58.4510, -1.3419, 0.3677

Deuteranopia

58.4848, 4.3824, 2.3992



Tritanopia

58.4866, 7.3619, 1.5161

Trichromacy



Original Color

58.4262, 7.0419, 2.3759

Protanomaly

58.4757, 1.6317, 0.9281

Deuteranomaly

58.4025, 5.5409, 2.3212

Tritanomaly

58.4563, 7.2014, 1.9475

Monochromacy



Original Color

58.4262, 7.0419, 2.3759

Achromatopsia

59.2902, -3.1636, 3.2213

Achromatomaly

59.0487, 0.4675, 3.0001

CSS Examples

Text

The CSS property to change the color of the text to HunterLab 58.4262, 7.0419, 2.3759 is called "color". The color property can be set on classes, ids or directly on the HTML element.

This example shows how text in the color `rgb(178, 151, 160)` looks like.

```
.text, #text, p{  
    color:rgb(178, 151, 160)  
}
```

If you want to add a text shadow in that color use the text-shadow property, you can generate a text shadow directly with our [CSS Text Shadow Generator](#).

Here you see how black text with a 4 pixel rgb(178, 151, 160) colored shadow looks like.

```
.shadow{ text-shadow: 4px 4px 2px rgb(178, 151, 160) }
```

Border

The CSS property to change the border of an element to HunterLab 58.4262, 7.0419, 2.3759 is called "border". The border property can be set on classes, ids or directly on the HTML element.

This example shows the color as border, it can be applied via the CSS property "border" or "border-color".

```
.border, #border, table{ border:4px solid rgb(178, 151, 160) }
```


If only the border color should be changed use the property `border-color`.

```
.border{ border-color:rgb(178, 151, 160) }
```

If you want to add a box shadow in that color use:

Here you see how a box with a 4 pixel `rgb(178, 151, 160)` colored shadow looks like.

```
.boxshadow{ -moz-box-shadow:4px 4px 4px  
4px rgb(178, 151, 160); -webkit-box-  
shadow:4px 4px 4px 4px rgb(178, 151, 160);  
box-shadow:4px 4px 4px 4px rgb(178, 151,  
160) }
```

Background

The CSS property to change the background color of an element to HunterLab 58.4262, 7.0419, 2.3759 is called "background". The background property can be set on classes, ids or directly on the HTML element.

```
.background, #background, body{  
background: rgb(178, 151, 160) }
```

If only the background color should be changed can be used:

```
.background{ background-color: rgb(178,  
151, 160) }
```

This example shows the color as background, it is applied via the CSS property "background".

To optimize and compress your CSS code, you can use our [online CSS compressor and optimizer](#) based on csstidy. If you want to create a linear or radial gradient as background or border, check our [CSS Gradient Generator](#).

Hey! You found this booklet interesting? Support Converting Colors with the new Membership Option!

The pro membership hides all ads, plus gives you double the colors in the color bucket, and more awesome pro features!

[Learn more, Memberships starting at \\$2.50/m!](#)

**Follow me
on Twitter!**

@ConvertingColor