

Converting Colors

HunterLab(58.3492, 17.4209,
13.9852)

Have a look what the booklet for
HunterLab(58.3492, 17.4209,
13.9852) contains.

HunterLab(58.3019, 17.4211, 14.0305)	3
<i>Conversions</i>	4
<i>Details</i>	6
<i>Harmonies</i>	12
<i>Previews</i>	24
<i>Color Blindness Simulation</i>	28
<i>CSS Examples</i>	31

Color

**HunterLab(58.3019, 17.4211,
14.0305)**

Conversions

Conversions Part 1

Format	Color
Hex	CD8E84
RGB	205, 142, 132
RGB Percent	80%, 56%, 52%
CMY	0.1961, 0.4431, 0.4823
CMYK	0.00, 0.31, 0.36, 0.20
HSL	8°, 42%, 66%
HSV	8°, 36%, 80%
XYZ	39.0147, 33.9911, 26.3345
YIQ	159.6970, 40.7580, 10.2460

Conversions

Conversions Part 2

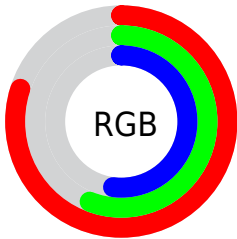
Format	Color
R _Y B	205, 144, 132
Decimal	13471364
CIE Lab	64.96, 22.64, 14.97
CIE LCh	65, 27.144, 33.470
Yxy	33.9927, 0.3927, 0.3422
Android (android.graphics.Color)	4291661444 (0xFFCD8E84)
YUV	159.6970, -13.6546, 39.7307
Hunter-Lab	58.3019, 17.4211, 14.0305

Details

The HunterLab color **58.3019, 17.4211, 14.0305** is a light color, and the websafe version is hex **CC9999**. A complement of this color would be **69.5283, -18.8552, -6.7397**, and the grayscale version is **59.2098, -3.1593, 3.2170**.

A 20% lighter version of the original color is **80.1515, 15.0412, 15.6998**, and **38.0740, 16.3377, 11.0032** is the 20% darker color. If you saturate the color by 10%, you get **53.5091, 24.1855, 16.5710**, and if you desaturate by 10%, it is **63.4815, 10.9519, 11.3628**.

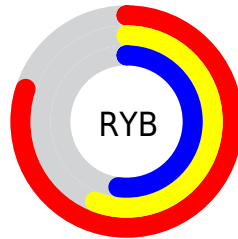
Distribution



Red (80%)

Green (56%)

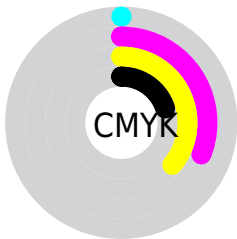
Blue (52%)



Red (80%)

Yellow (56%)

Blue (52%)

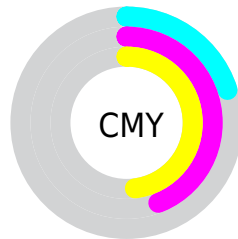


Cyan (0%)

Magenta (31%)

Yellow (36%)

Black (20%)



Cyan (20%)

Magenta (44%)

Yellow (48%)

Brightness & Saturation Gradients

These gradients show how the HunterLab color 58.3019, 17.4211, 14.0305 changes by changing the brightness by 10 percent. The first figure shows a shift by +10% for each color and the second figure -10%.

Similar to the brightness gradients but the following saturation gradients show a change of the HunterLab color 58.3019, 17.4211, 14.0305 by changing the saturation by 10% instead.

■ 58.3019, 17.4211,
14.0305

■ 58.3019, 17.4211,
14.0305

178.9133, 19.2950,
26.4583

■ 47.8414, 16.8399,
12.6110

■ 81.1926, 18.3051,
16.8134

■ 38.0931, 16.1558,
11.1562

■ 93.5500, 18.6308,
18.1893

■ 29.1150, 15.3511,
9.6485

■ 106.4777, 18.8871,
19.5614

■ 20.9798, 14.4076,
8.0587

119.9514, 19.0797,
20.9331

■ 13.7863, 13.3060,
6.3978

133.9498, 19.2130,
22.3068

■ 7.4078, 13.4556,
5.1854

148.4541, 19.2911,

0.0000, INF, NaN

23.6846

0.0000, NaN, NaN

163.4470, 19.3174,
25.0681

0.0000, NaN, NaN

■ 58.3019, 17.4211,
14.0305

■ 58.3019, 17.4211,
14.0305

■ 53.5091, 24.1855,
16.5710

■ 63.4815, 10.9519,
11.3628

■ 49.1647, 31.1731,
18.9046

■ 68.9881, 4.8076,
8.6163

■ 45.3447, 38.2111,
20.9249

■ 74.7774, -1.0247,
5.8239

■ 42.1271, 45.0090,
22.4992

■ 80.8121, -6.5713,
3.0050

■ 39.5818, 51.1542,
23.4954

■ 87.0618, -11.8640,
0.1707

■ 37.7522, 56.1713,
23.8402

■ 93.5016, -16.9358,
-2.6726

■ 37.1674, 57.8765,
23.9156

■ 95.7701, -20.3790,
0.0859

Harmonies

Analogous

The Analogous color harmony consists of three colors that are next to each other on the color wheel.



58.3033, 21.7628, 4.4869



58.3019, 17.4211, 14.0305



58.3033, 7.5593, 19.6001

Triad

The Triadic color harmony groups three colors that are evenly spaced from another and form a triangle on the color wheel.



58.3033, 17.4185, 14.0314



58.3033, -22.3630, 12.1547



58.3033, -1.7105, -23.2751

Complementary

The Complementary color scheme is a pair of colors which are on the opposite of each other on the color wheel.



58.3019, 17.4211, 14.0305



69.5283, -18.8552, -6.7397

Split Complementary

Split-complementary colors differ from the complementary color scheme. The scheme consists of three colors, the original color and two neighbors of the complement color.



58.3033, -13.0708, -20.0896



58.3019, 17.4211, 14.0305



58.3033, -24.4127, 1.8290

Square

The Square scheme is like the rectangle color scheme, but the four colors are evenly spaced on the color wheel.



58.3033, 17.4185, 14.0314



58.3033, -15.3063, 18.6804



58.3033, -21.1476, -10.2819



58.3033, 10.1705, -18.2764

Rectangle

The Rectangle color scheme consists of four colors that form a rectangle on the color wheel.



58.3019, 17.4211, 14.0305



58.3033, -0.4654, 21.0464



58.3033, -21.1476, -10.2819



58.3033, -5.7162, -23.1295

Sweetspot

The Sweet Spot groups the original color and five complimentary colors.



58.3033, 17.4185, 14.0314



91.5641, 2.7693, 9.4358



57.8224, 32.5070, -16.9036



41.8936, 1.7583, 4.5922

0.0000, NaN, NaN



46.2646, -2.4686, 2.5136

Same Dimension

The Same Dimension uses a secret algorithm to generate beautiful new colors.



58.3033, 17.4185, 14.0314



69.7049, 29.1397, 20.5558



68.2488, -0.9336, 23.0736



33.8489, 0.5350, 3.2117



29.4645, 45.2118, 18.9474



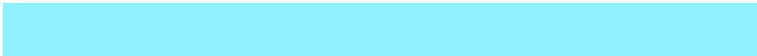
7.2844, 8.4601, 4.6367

Inverse Universe

The Inverse Universe completely reimagines the original color for something new.



69.5283, -18.8552, -6.7397



86.9344, -27.0067, -11.4275



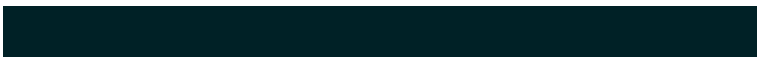
58.3351, -1.4351, -22.7824



35.2911, -4.0631, 0.5565



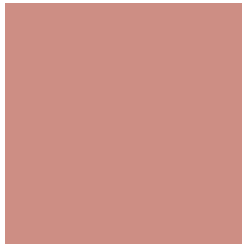
47.3280, -19.8854, -16.2290



11.0893, -4.9518, -3.1712

Previews

White Background



This preview shows how the HunterLab color 58.3019, 17.4211, 14.0305 looks on a white background.

Color Contrast Check

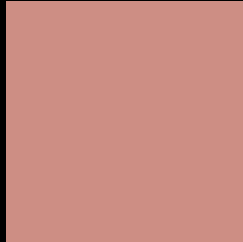
Large Text (above 18pt) WCAG AA × Fail

Any Text WCAG AA × Fail

Large Text (above 18pt) WCAG AAA × Fail

Any Text WCAG AAA × Fail

Black Background



This preview shows how the HunterLab color 58.3019, 17.4211, 14.0305 looks on a black background.

Color Contrast Check

Large Text (above 18pt) WCAG AA ✓ Pass

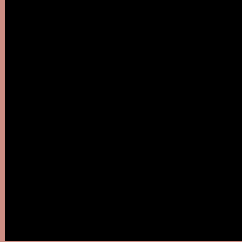
Any Text WCAG AA ✓ Pass

Large Text (above 18pt) WCAG AAA ✓ Pass

Any Text WCAG AAA ✓ Pass

If you want to check with other color combinations, try the [Color Contrast Checker](#).

HunterLab 58.3019, 17.4211, 14.0305 Background



This preview shows how black text looks on a background with the HunterLab color 58.3019, 17.4211, 14.0305.



This preview shows how white text looks on a background with the HunterLab color 58.3019, 17.4211, 14.0305.

Color Blindness Simulation

Color vision deficiency is a very complex topic, and I could not describe the different causes any better than Wikipedia does, so if you want to learn more, you should check out their [article about color blindness](#).

Dichromacy



Original Color

58.3019, 17.4211, 14.0305

Protanopia

58.3153, -3.1598, 10.6526

Deuteranopia

58.4256, 4.0322, 14.6406



Tritanopia

58.2517, 22.0704, 6.9124

Trichromacy



Original Color

58.3019, 17.4211, 14.0305

Protanomaly

58.2803, 3.8777, 11.9030

Deuteranomaly

58.2193, 9.0209, 14.1648

Tritanomaly

58.1903, 20.2223, 9.7329

Monochromacy



Original Color

58.3019, 17.4211, 14.0305

Achromatopsia

59.2902, -3.1636, 3.2213

Achromatomaly

58.4932, 3.8360, 6.8632

CSS Examples

Text

The CSS property to change the color of the text to HunterLab 58.3019, 17.4211, 14.0305 is called "color". The color property can be set on classes, ids or directly on the HTML element.

This example shows how text in the color `rgb(205, 142, 132)` looks like.

```
.text, #text, p{  
    color:rgb(205, 142, 132)  
}
```

If you want to add a text shadow in that color use the text-shadow property, you can generate a text shadow directly with our [CSS Text Shadow Generator](#).

Here you see how black text with a 4 pixel rgb(205, 142, 132) colored shadow looks like.

```
.shadow{ text-shadow: 4px 4px 2px rgb(205, 142, 132) }
```

Border

The CSS property to change the border of an element to HunterLab 58.3019, 17.4211, 14.0305 is called "border". The border property can be set on classes, ids or directly on the HTML element.

This example shows the color as border, it can be applied via the CSS property "border" or "border-color".

```
.border, #border, table{ border:4px solid rgb(205, 142, 132) }
```


If only the border color should be changed use the property `border-color`.

```
.border{ border-color:rgb(205, 142, 132) }
```

If you want to add a box shadow in that color use:

Here you see how a box with a 4 pixel `rgb(205, 142, 132)` colored shadow looks like.

```
.boxshadow{ -moz-box-shadow:4px 4px 4px  
4px rgb(205, 142, 132); -webkit-box-  
shadow:4px 4px 4px 4px rgb(205, 142, 132);  
box-shadow:4px 4px 4px 4px rgb(205, 142,  
132) }
```

Background

The CSS property to change the background color of an element to HunterLab 58.3019, 17.4211, 14.0305 is called "background". The background property can be set on classes, ids or directly on the HTML element.

```
.background, #background, body{  
background: rgb(205, 142, 132) }
```

If only the background color should be changed can be used:

```
.background{ background-color: rgb(205,  
142, 132) }
```

This example shows the color as background, it is applied via the CSS property "background".

To optimize and compress your CSS code, you can use our [online CSS compressor and optimizer](#) based on csstidy. If you want to create a linear or radial gradient as background or border, check our [CSS Gradient Generator](#).

Hey! You found this booklet interesting? Support Converting Colors with the new Membership Option!

The pro membership hides all ads, plus gives you double the colors in the color bucket, and more awesome pro features!

[Learn more, Memberships starting at \\$2.50/m!](#)

**Follow me
on Twitter!**

@ConvertingColor