

Converting Colors

HunterLab(58.3500, 16.2559,
17.1204)

Have a look what the booklet for
HunterLab(58.3500, 16.2559,
17.1204) contains.

HunterLab(58.4780, 16.2540, 17.3194)	3
<i>Conversions</i>	4
<i>Details</i>	6
<i>Harmonies</i>	12
<i>Previews</i>	24
<i>Color Blindness Simulation</i>	28
<i>CSS Examples</i>	31

Color

**HunterLab(58.4780, 16.2540,
17.3194)**

Conversions

Conversions Part 1

Format	Color
Hex	CE8F7B
RGB	206, 143, 123
RGB Percent	81%, 56%, 48%
CMY	0.1922, 0.4392, 0.5176
CMYK	0.00, 0.31, 0.40, 0.19
HSL	14°, 46%, 65%
HSV	14°, 40%, 81%
XYZ	38.8512, 34.1968, 23.2918
YIQ	159.5570, 43.9680, 7.1360

Conversions

Conversions Part 2

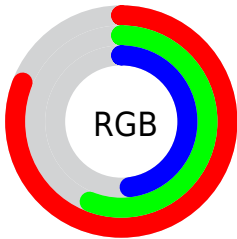
Format	Color
R _Y B	206, 149, 123
Decimal	13537147
CIE Lab	65.12, 21.42, 20.25
CIE LCh	65, 29.476, 43.387
Yxy	34.1984, 0.4033, 0.3550
Android (android.graphics.Color)	4291727227 (0xFFCE8F7B)
YUV	159.5570, -18.0226, 40.7305
Hunter-Lab	58.4780, 16.2540, 17.3194

Details

The HunterLab color **58.4780, 16.2540, 17.3194** is a light color, and the websafe version is hex **CC9999**. A complement of this color would be **66.1689, -16.3413, -11.8352**, and the grayscale version is **59.1689, -3.1571, 3.2148**.

A 20% lighter version of the original color is **80.2042, 13.3021, 19.2906**, and **38.2528, 15.3757, 13.7989** is the 20% darker color. If you saturate the color by 10%, you get **54.1883, 22.1400, 19.9099**, and if you desaturate by 10%, it is **63.0841, 10.6897, 14.4106**.

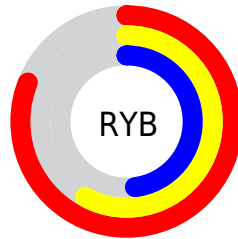
Distribution



Red (81%)

Green (56%)

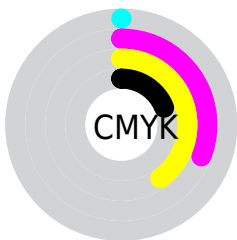
Blue (48%)



Red (81%)

Yellow (58%)

Blue (48%)

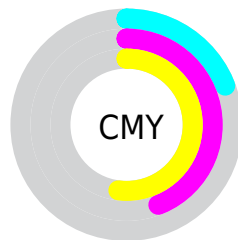


Cyan (0%)

Magenta (31%)

Yellow (40%)

Black (19%)



Cyan (19%)

Magenta (44%)

Yellow (52%)

Brightness & Saturation Gradients

These gradients show how the HunterLab color 58.4780, 16.2540, 17.3194 changes by changing the brightness by 10 percent. The first figure shows a shift by +10% for each color and the second figure -10%.

Similar to the brightness gradients but the following saturation gradients show a change of the HunterLab color 58.4780, 16.2540, 17.3194 by changing the saturation by 10% instead.

 58.4780, 16.2540, 17.3194  58.4780, 16.2540, 17.3194


179.1692, 17.6913, 31.9696  48.0063, 15.7307, 15.5700

 81.3893, 17.0289, 20.6927  38.2460, 15.1072, 13.7545

 93.7562, 17.3030, 22.3368  29.2547, 14.3658, 11.8472

 106.6929, 17.5097, 23.9627  21.1052, 13.4877, 9.8059

120.1753, 17.6542, 25.5758  13.8953, 12.4517, 7.9903

134.1822, 17.7411, 27.1801  7.5285, 12.4631, 5.2700

148.6945, 17.7740, 0.0000, INF, NaN

28.7788

0.0000, NaN, NaN

163.6953, 17.7565,
30.3746

0.0000, NaN, NaN

■ 58.4780, 16.2540,
17.3194

■ 58.4780, 16.2540,
17.3194

■ 54.1883, 22.1400,
19.9099

■ 63.0841, 10.6897,
14.4106

■ 50.2573, 28.3117,
22.0934

■ 67.9618, 5.4618,
11.2498

■ 46.7386, 34.6649,
23.7704

■ 73.0782, 0.5531,
7.8906

■ 43.6862, 41.0194,
24.8395

■ 78.4047, -4.0618,
4.3728

■ 41.1503, 47.1037,
25.2276

■ 83.9172, -8.4126,
0.7258

■ 39.2087, 52.3887,
25.0773

■ 89.5958, -12.5290,
-3.0285

■ 94.9978, -18.8288,
-0.8390

■ 95.8446, -20.1083,
0.1820

Harmonies

Analogous

The Analogous color harmony consists of three colors that are next to each other on the color wheel.



58.4794, 23.3430, 8.4443



58.4780, 16.2540, 17.3194



58.4794, 4.2246, 21.7476

Triad

The Triadic color harmony groups three colors that are evenly spaced from another and form a triangle on the color wheel.



58.4794, 16.2513, 17.3203



58.4794, -25.2777, 9.6045



58.4794, 2.8002, -25.1233

Complementary

The Complementary color scheme is a pair of colors which are on the opposite of each other on the color wheel.



58.4780, 16.2540, 17.3194



66.1689, -16.3413, -11.8352

Split Complementary

Split-complementary colors differ from the complementary color scheme. The scheme consists of three colors, the original color and two neighbors of the complement color.



58.4794, -10.1257, -24.6197



58.4780, 16.2540, 17.3194



58.4794, -25.5862, -2.6173

Square

The Square scheme is like the rectangle color scheme, but the four colors are evenly spaced on the color wheel.



58.4794, 16.2513, 17.3203



58.4794, -19.3807, 18.0084



58.4794, -20.2640, -15.7013



58.4794, 15.1300, -16.9555

Rectangle

The Rectangle color scheme consists of four colors that form a rectangle on the color wheel.



58.4780, 16.2540, 17.3194



58.4794, -4.5986, 22.3492



58.4794, -20.2640, -15.7013



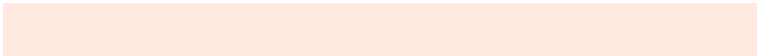
58.4794, -1.6336, -26.0085

Sweetspot

The Sweet Spot groups the original color and five complimentary colors.



58.4794, 16.2513, 17.3203



91.7880, 1.8356, 10.8548



55.5519, 36.0267, -15.0965



42.0625, 1.2256, 5.2870

0.0000, NaN, NaN



46.2646, -2.4686, 2.5136

Same Dimension

The Same Dimension uses a secret algorithm to generate beautiful new colors.



58.4794, 16.2513, 17.3203



69.8703, 26.8828, 24.8170



69.8409, -4.2925, 27.0522



34.1254, 0.0583, 3.5168



30.9744, 40.4813, 19.7950



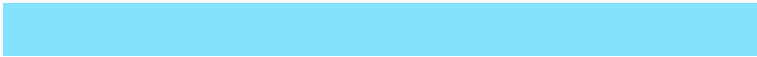
7.8547, 6.9033, 4.9609

Inverse Universe

The Inverse Universe completely reimagines the original color for something new.



66.1689, -16.3413, -11.8352



81.4216, -22.5251, -19.1147



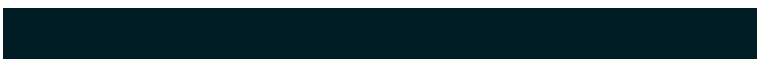
53.8136, 3.5285, -31.1133



35.0014, -3.5979, 0.2114



41.9701, -12.6486, -25.1542



10.1085, -3.6685, -4.7154

Previews

White Background



This preview shows how the HunterLab color 58.4780, 16.2540, 17.3194 looks on a white background.

Color Contrast Check

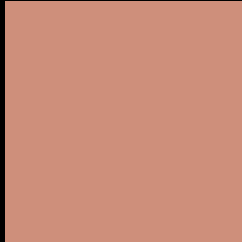
Large Text (above 18pt) WCAG AA × Fail

Any Text WCAG AA × Fail

Large Text (above 18pt) WCAG AAA × Fail

Any Text WCAG AAA × Fail

Black Background



This preview shows how the HunterLab color 58.4780, 16.2540, 17.3194 looks on a black background.

Color Contrast Check

Large Text (above 18pt) WCAG AA ✓ Pass

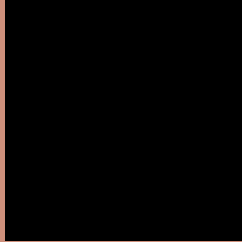
Any Text WCAG AA ✓ Pass

Large Text (above 18pt) WCAG AAA ✓ Pass

Any Text WCAG AAA ✓ Pass

If you want to check with other color combinations, try the [Color Contrast Checker](#).

HunterLab 58.4780, 16.2540, 17.3194 Background



This preview shows how black text looks on a background with the HunterLab color 58.4780, 16.2540, 17.3194.



This preview shows how white text looks on a background with the HunterLab color 58.4780, 16.2540,

Color Blindness Simulation

Color vision deficiency is a very complex topic, and I could not describe the different causes any better than Wikipedia does, so if you want to learn more, you should check out their [article about color blindness](#).

Dichromacy



Original Color

58.4780, 16.2540, 17.3194

Protanopia

58.6432, -3.9916, 14.7138

Deuteranopia

58.5458, 4.0403, 17.8272



Tritanopia

58.3756, 22.4475, 7.0577

Trichromacy



Original Color

58.4780, 16.2540, 17.3194

Protanomaly

58.5319, 2.8218, 15.7778

Deuteranomaly

58.5128, 8.1953, 17.5419

Tritanomaly

58.2366, 20.2106, 10.9792

Monochromacy



Original Color

58.4780, 16.2540, 17.3194

Achromatopsia

59.2902, -3.1636, 3.2213

Achromatomaly

58.7919, 3.2376, 8.4464

CSS Examples

Text

The CSS property to change the color of the text to HunterLab 58.4780, 16.2540, 17.3194 is called "color". The color property can be set on classes, ids or directly on the HTML element.

This example shows how text in the color `rgb(206, 143, 123)` looks like.

```
.text, #text, p{  
    color:rgb(206, 143, 123)  
}
```

If you want to add a text shadow in that color use the text-shadow property, you can generate a text shadow directly with our [CSS Text Shadow Generator](#).

Here you see how black text with a 4 pixel rgb(206, 143, 123) colored shadow looks like.

```
.shadow{ text-shadow: 4px 4px 2px rgb(206, 143, 123) }
```

Border

The CSS property to change the border of an element to HunterLab 58.4780, 16.2540, 17.3194 is called "border". The border property can be set on classes, ids or directly on the HTML element.

This example shows the color as border, it can be applied via the CSS property "border" or "border-color".

```
.border, #border, table{ border:4px solid rgb(206, 143, 123) }
```


If only the border color should be changed use the property `border-color`.

```
.border{ border-color:rgb(206, 143, 123) }
```

If you want to add a box shadow in that color use:

Here you see how a box with a 4 pixel `rgb(206, 143, 123)` colored shadow looks like.

```
.boxshadow{ -moz-box-shadow:4px 4px 4px  
4px rgb(206, 143, 123); -webkit-box-  
shadow:4px 4px 4px 4px rgb(206, 143, 123);  
box-shadow:4px 4px 4px 4px rgb(206, 143,  
123) }
```

Background

The CSS property to change the background color of an element to HunterLab 58.4780, 16.2540, 17.3194 is called "background". The background property can be set on classes, ids or directly on the HTML element.

```
.background, #background, body{  
background: rgb(206, 143, 123) }
```

If only the background color should be changed can be used:

```
.background{ background-color: rgb(206,  
143, 123) }
```

This example shows the color as background, it is applied via the CSS property "background".

To optimize and compress your CSS code, you can use our [online CSS compressor and optimizer](#) based on csstidy. If you want to create a linear or radial gradient as background or border, check our [CSS Gradient Generator](#).

Hey! You found this booklet interesting? Support Converting Colors with the new Membership Option!

The pro membership hides all ads, plus gives you double the colors in the color bucket, and more awesome pro features!

[Learn more, Memberships starting at \\$2.50/m!](#)

**Follow me
on Twitter!**

@ConvertingColor