

Converting Colors

HunterLab(58.3500, 17.3897,
11.6949)

Have a look what the booklet for
HunterLab(58.3500, 17.3897,
11.6949) contains.

HunterLab(58.2044, 17.4065, 11.6768)	3
<i>Conversions</i>	4
<i>Details</i>	6
<i>Harmonies</i>	12
<i>Previews</i>	24
<i>Color Blindness Simulation</i>	28
<i>CSS Examples</i>	31

Color

**HunterLab(58.2044, 17.4065,
11.6768)**

Conversions

Conversions Part 1

Format	Color
Hex	CB8E8A
RGB	203, 142, 138
RGB Percent	80%, 56%, 54%
CMY	0.2039, 0.4431, 0.4588
CMYK	0.00, 0.30, 0.32, 0.20
HSL	4°, 38%, 67%
HSV	4°, 32%, 80%
XYZ	38.8891, 33.8775, 28.5341
YIQ	159.7830, 37.6400, 11.6880

Conversions

Conversions Part 2

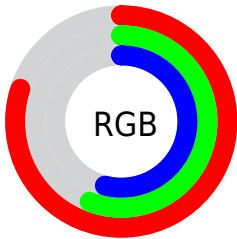
Format	Color
R _Y B	203, 142, 138
Decimal	13340298
CIE Lab	64.87, 22.63, 11.44
CIE LCh	65, 25.359, 26.809
Yxy	33.8791, 0.3839, 0.3344
Android (android.graphics.Color)	4291530378 (0xFFCB8E8A)
YUV	159.7830, -10.7390, 37.9013
Hunter-Lab	58.2044, 17.4065, 11.6768

Details

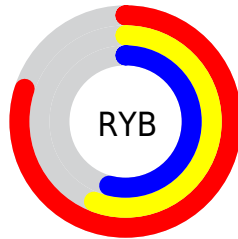
The HunterLab color **58.2044, 17.4065, 11.6768** is a light color, and the websafe version is hex **CC9999**. A complement of this color would be **71.1057, -19.7950, -3.6430**, and the grayscale version is **59.2343, -3.1606, 3.2183**.

A 20% lighter version of the original color is **80.3128, 15.8851, 13.3785**, and **37.9339, 16.1284, 9.2268** is the 20% darker color. If you saturate the color by 10%, you get **53.0589, 24.7537, 14.0795**, and if you desaturate by 10%, it is **63.7843, 10.3374, 9.2897**.

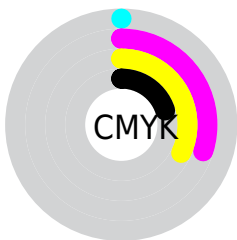
Distribution



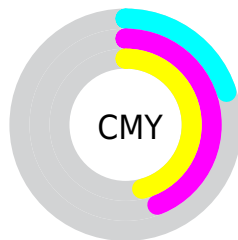
- Red (80%)
- Green (56%)
- Blue (54%)



- Red (80%)
- Yellow (56%)
- Blue (54%)



- Cyan (0%)
- Magenta (30%)
- Yellow (32%)
- Black (20%)



- Cyan (20%)
- Magenta (44%)
- Yellow (46%)

Brightness & Saturation Gradients

These gradients show how the HunterLab color 58.2044, 17.4065, 11.6768 changes by changing the brightness by 10 percent. The first figure shows a shift by +10% for each color and the second figure -10%.

Similar to the brightness gradients but the following saturation gradients show a change of the HunterLab color 58.2044, 17.4065, 11.6768 by changing the saturation by 10% instead.

■ 58.2044, 17.4065,
11.6768

■ 58.2044, 17.4065,
11.6768

178.7716, 19.2821,
22.6578

■ 47.7501, 16.8249,
10.4708

■ 81.0837, 18.2913,
14.0770

■ 38.0085, 16.1403,
9.2490

■ 93.4359, 18.6172,
15.2786

■ 29.0376, 15.3350,
7.9998

■ 106.3585, 18.8737,
16.4856

■ 20.9105, 14.3906,
6.7026

119.8273, 19.0664,
17.7000

■ 13.7260, 13.2881,
5.3204

133.8211, 19.1999,
18.9234

■ 7.3400, 13.5365,
5.1380

148.3209, 19.2781,

0.0000, INF, NaN

20.1570

0.0000, NaN, NaN

163.3095, 19.3045,
21.4015

0.0000, NaN, NaN

■ 58.2044, 17.4065,
11.6768

■ 58.2044, 17.4065,
11.6768

■ 53.0589, 24.7537,
14.0795

■ 63.7843, 10.3374,
9.2897

■ 48.4241, 32.2794,
16.4365

■ 69.7278, 3.5864,
6.9446

■ 44.3940, 39.7545,
18.6493

■ 75.9823, -2.8573,
4.6543

■ 41.0657, 46.7962,
20.5725

■ 82.5044, -9.0211,
2.4202

■ 38.5237, 52.8773,
22.0329

■ 89.2597, -14.9394,
0.2388

■ 36.8121, 57.4430,
22.8868

■ 95.6225, -20.9166,
-0.1049

■ 36.0166, 59.7144,
23.2386

Harmonies

Analogous

The Analogous color harmony consists of three colors that are next to each other on the color wheel.



58.2058, 20.0122, 2.0154



58.2044, 17.4065, 11.6768



58.2058, 9.1663, 17.8473

Triad

The Triadic color harmony groups three colors that are evenly spaced from another and form a triangle on the color wheel.



58.2058, 17.4040, 11.6778



58.2058, -20.0699, 13.3119



58.2058, -4.3037, -21.2457

Complementary

The Complementary color scheme is a pair of colors which are on the opposite of each other on the color wheel.



58.2044, 17.4065, 11.6768



71.1057, -19.7950, -3.6430

Split Complementary

Split-complementary colors differ from the complementary color scheme. The scheme consists of three colors, the original color and two neighbors of the complement color.



58.2058, -14.4441, -16.7339



58.2044, 17.4065, 11.6768



58.2058, -23.1034, 4.2980

Square

The Square scheme is like the rectangle color scheme, but the four colors are evenly spaced on the color wheel.



58.2058, 17.4040, 11.6778



58.2058, -12.5143, 18.6578



58.2058, -21.1235, -6.8583



58.2058, 6.9346, -18.2624

Rectangle

The Rectangle color scheme consists of four colors that form a rectangle on the color wheel.



58.2044, 17.4065, 11.6768



58.2058, 1.8917, 19.8041



58.2058, -21.1235, -6.8583



58.2058, -7.9460, -20.5375

Sweetspot

The Sweet Spot groups the original color and five complimentary colors.



58.2058, 17.4040, 11.6778



91.7260, 3.0390, 8.4220



59.1881, 29.4587, -17.5974



41.9129, 1.9651, 4.0935

0.0000, NaN, NaN



46.2646, -2.4686, 2.5136

Same Dimension

The Same Dimension uses a secret algorithm to generate beautiful new colors.



58.2058, 17.4040, 11.6778



70.9280, 28.6560, 17.1294



66.8636, 1.2636, 19.9016



33.6492, 0.8815, 2.9900



28.8126, 47.3653, 18.5834



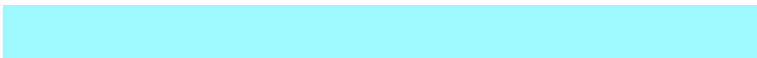
6.8410, 9.7937, 4.3868

Inverse Universe

The Inverse Universe completely reimagines the original color for something new.



71.1057, -19.7950, -3.6430



90.7025, -28.7343, -6.4553



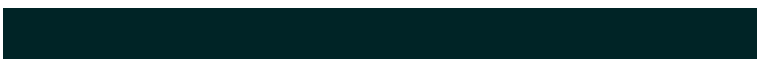
61.1919, -4.6227, -17.1187



35.5022, -4.3998, 0.8062



51.3483, -24.9534, -10.3136



11.8190, -5.8589, -2.1251

Previews

White Background



This preview shows how the HunterLab color 58.2044, 17.4065, 11.6768 looks on a white background.

Color Contrast Check

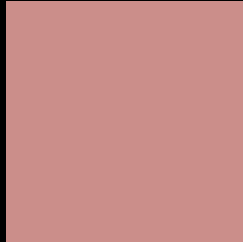
Large Text (above 18pt) WCAG AA × Fail

Any Text WCAG AA × Fail

Large Text (above 18pt) WCAG AAA × Fail

Any Text WCAG AAA × Fail

Black Background



This preview shows how the HunterLab color 58.2044, 17.4065, 11.6768 looks on a black background.

Color Contrast Check

Large Text (above 18pt) WCAG AA ✓ Pass

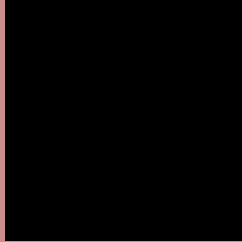
Any Text WCAG AA ✓ Pass

Large Text (above 18pt) WCAG AAA ✓ Pass

Any Text WCAG AAA ✓ Pass

If you want to check with other color combinations, try the [Color Contrast Checker](#).

HunterLab 58.2044, 17.4065, 11.6768 Background



This preview shows how black text looks on a background with the HunterLab color 58.2044, 17.4065, 11.6768.



This preview shows how white text looks on a background with the HunterLab color 58.2044, 17.4065, 11.6768.

Color Blindness Simulation

Color vision deficiency is a very complex topic, and I could not describe the different causes any better than Wikipedia does, so if you want to learn more, you should check out their [article about color blindness](#).

Dichromacy



Original Color

58.2044, 17.4065, 11.6768

Protanopia

58.2888, -2.9401, 8.2045

Deuteranopia

58.3591, 4.0932, 12.3681



Tritanopia

58.1618, 20.5662, 6.3529

Trichromacy



Original Color

58.2044, 17.4065, 11.6768

Protanomaly

58.2277, 4.0049, 9.4890

Deuteranomaly

58.1419, 9.0555, 11.8510

Tritanomaly

58.2773, 19.3532, 8.5823

Monochromacy



Original Color

58.2044, 17.4065, 11.6768

Achromatopsia

59.2902, -3.1636, 3.2213

Achromatomaly

58.5488, 4.1335, 6.0680

CSS Examples

Text

The CSS property to change the color of the text to HunterLab 58.2044, 17.4065, 11.6768 is called "color". The color property can be set on classes, ids or directly on the HTML element.

This example shows how text in the color `rgb(203, 142, 138)` looks like.

```
.text, #text, p{  
    color:rgb(203, 142, 138)  
}
```

If you want to add a text shadow in that color use the text-shadow property, you can generate a text shadow directly with our [CSS Text Shadow Generator](#).

Here you see how black text with a 4 pixel rgb(203, 142, 138) colored shadow looks like.

```
.shadow{ text-shadow: 4px 4px 2px rgb(203, 142, 138) }
```

Border

The CSS property to change the border of an element to HunterLab 58.2044, 17.4065, 11.6768 is called "border". The border property can be set on classes, ids or directly on the HTML element.

This example shows the color as border, it can be applied via the CSS property "border" or "border-color".

```
.border, #border, table{ border:4px solid rgb(203, 142, 138) }
```


If only the border color should be changed use the property `border-color`.

```
.border{ border-color:rgb(203, 142, 138) }
```

If you want to add a box shadow in that color use:

Here you see how a box with a 4 pixel `rgb(203, 142, 138)` colored shadow looks like.

```
.boxshadow{ -moz-box-shadow:4px 4px 4px  
4px rgb(203, 142, 138); -webkit-box-  
shadow:4px 4px 4px 4px rgb(203, 142, 138);  
box-shadow:4px 4px 4px 4px rgb(203, 142,  
138) }
```

Background

The CSS property to change the background color of an element to HunterLab 58.2044, 17.4065, 11.6768 is called "background". The background property can be set on classes, ids or directly on the HTML element.

```
.background, #background, body{  
background: rgb(203, 142, 138) }
```

If only the background color should be changed can be used:

```
.background{ background-color: rgb(203,  
142, 138) }
```

This example shows the color as background, it is applied via the CSS property "background".

To optimize and compress your CSS code, you can use our [online CSS compressor and optimizer](#) based on csstidy. If you want to create a linear or radial gradient as background or border, check our [CSS Gradient Generator](#).

Hey! You found this booklet interesting? Support Converting Colors with the new Membership Option!

The pro membership hides all ads, plus gives you double the colors in the color bucket, and more awesome pro features!

[Learn more, Memberships starting at \\$2.50/m!](#)

**Follow me
on Twitter!**

@ConvertingColor