

Converting Colors

HunterLab(58.3500, 17.5051,
12.5108)

Have a look what the booklet for
HunterLab(58.3500, 17.5051,
12.5108) contains.

HunterLab(58.2760, 17.5318, 12.5185)	3
<i>Conversions</i>	4
<i>Details</i>	6
<i>Harmonies</i>	12
<i>Previews</i>	24
<i>Color Blindness Simulation</i>	28
<i>CSS Examples</i>	31

Color

**HunterLab(58.2760, 17.5318,
12.5185)**

Conversions

Conversions Part 1

Format	Color
Hex	CC8E88
RGB	204, 142, 136
RGB Percent	80%, 56%, 53%
CMY	0.2000, 0.4431, 0.4667
CMYK	0.00, 0.30, 0.33, 0.20
HSL	5°, 40%, 67%
HSV	5°, 33%, 80%
XYZ	39.0187, 33.9609, 27.7911
YIQ	159.8540, 38.8780, 11.2780

Conversions

Conversions Part 2

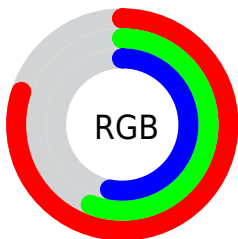
Format	Color
RYB	204, 143, 136
Decimal	13405832
CIELab	64.93, 22.76, 12.67
CIElCh	65, 26.050, 29.109
Yxy	33.9625, 0.3872, 0.3370
Android (android.graphics.Color)	4291595912 (0xFFCC8E88)
YUV	159.8540, -11.7600, 38.7160
Hunter-Lab	58.2760, 17.5318, 12.5185

Details

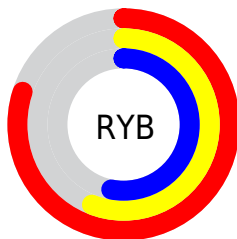
The HunterLab color **58.2760, 17.5318, 12.5185** is a light color, and the websafe version is hex **CC9999**. A complement of this color would be **70.6967, -19.5791, -4.6893**, and the grayscale version is **59.2670, -3.1623, 3.2201**.

A 20% lighter version of the original color is **80.2583, 15.6002, 14.1619**, and **38.0131, 16.2798, 9.9765** is the 20% darker color. If you saturate the color by 10%, you get **53.2504, 24.6864, 14.9830**, and if you desaturate by 10%, it is **63.7203, 10.6609, 10.0192**.

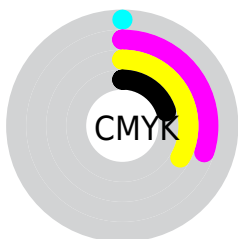
Distribution



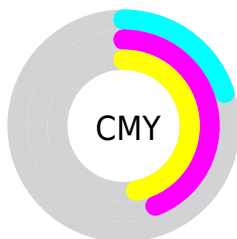
- Red (80%)
- Green (56%)
- Blue (53%)



- Red (80%)
- Yellow (56%)
- Blue (53%)



- Cyan (0%)
- Magenta (30%)
- Yellow (33%)
- Black (20%)



- Cyan (20%)
- Magenta (44%)
- Yellow (47%)

Brightness & Saturation Gradients

These gradients show how the HunterLab color 58.2760, 17.5318, 12.5185 changes by changing the brightness by 10 percent. The first figure shows a shift by +10% for each color and the second figure -10%.

Similar to the brightness gradients but the following saturation gradients show a change of the HunterLab color 58.2760, 17.5318, 12.5185 by changing the saturation by 10% instead.

■ 58.2760, 17.5318,
12.5185

■ 58.2760, 17.5318,
12.5185

178.8757, 19.4476,
24.0014

■ 47.8172, 16.9451,
11.2387

■ 81.1637, 18.4264,
15.0512

■ 38.0706, 16.2551,
9.9364

■ 93.5197, 18.7569,
16.3132

■ 29.0944, 15.4444,
8.5980

■ 106.4460, 19.0181,
17.5775

■ 20.9614, 14.4946,
7.1999

119.9184, 19.2152,
18.8465

■ 13.7703, 13.3868,
5.7036

133.9156, 19.3530,
20.1221

■ 7.3898, 13.5602,
5.1729

148.4187, 19.4354,

0.0000, INF, NaN

21.4058

0.0000, NaN, NaN

163.4105, 19.4660,
22.6986

0.0000, NaN, NaN

■ 58.2760, 17.5318,
12.5185

■ 58.2760, 17.5318,
12.5185

■ 53.2504, 24.6864,
14.9830

■ 63.7203, 10.6609,
10.0192

■ 48.7148, 32.0345,
17.3435

■ 69.5164, 4.1106,
7.5202

■ 44.7568, 39.3664,
19.4972

■ 75.6143, -2.1305,
5.0418

■ 41.4666, 46.3319,
21.3016

■ 81.9728, -8.0892,
2.5919

■ 38.9236, 52.4443,
22.5973

■ 88.5587, -13.7990,
0.1723

■ 37.1720, 57.1753,
23.2659

■ 95.2291, -19.9469,
-0.5726

■ 36.4286, 59.3300,
23.4858

■ 95.6961, -20.6485,
-0.0097

Harmonies

Analogous

The Analogous color harmony consists of three colors that are next to each other on the color wheel.



58.2774, 20.7288, 2.8435



58.2760, 17.5318, 12.5185



58.2774, 8.7006, 18.5114

Triad

The Triadic color harmony groups three colors that are evenly spaced from another and form a triangle on the color wheel.



58.2774, 17.5293, 12.5195



58.2774, -20.9280, 12.9861



58.2774, -3.4568, -22.0725

Complementary

The Complementary color scheme is a pair of colors which are on the opposite of each other on the color wheel.



58.2760, 17.5318, 12.5185



70.6967, -19.5791, -4.6893

Split Complementary

Split-complementary colors differ from the complementary color scheme. The scheme consists of three colors, the original color and two neighbors of the complement color.



58.2774, -14.0540, -17.9603



58.2760, 17.5318, 12.5185



58.2774, -23.6470, 3.4990

Square

The Square scheme is like the rectangle color scheme, but the four colors are evenly spaced on the color wheel.



58.2774, 17.5293, 12.5195



58.2774, -13.5010, 18.7418



58.2774, -21.2295, -8.0368



58.2774, 8.0585, -18.4026

Rectangle

The Rectangle color scheme consists of four colors that form a rectangle on the color wheel.



58.2760, 17.5318, 12.5185



58.2774, 1.1317, 20.3016



58.2774, -21.2295, -8.0368



58.2774, -7.2389, -21.5432

Sweetspot

The Sweet Spot groups the original color and five complimentary colors.



58.2774, 17.5293, 12.5195



91.9340, 2.6758, 8.6527



58.7696, 30.6047, -17.3535



42.0219, 1.7733, 4.2138

0.0000, NaN, NaN



46.2646, -2.4686, 2.5136

Same Dimension

The Same Dimension uses a secret algorithm to generate beautiful new colors.



58.2774, 17.5293, 12.5195



70.2872, 29.1470, 18.3991



67.4798, 0.4327, 21.1224



33.7198, 0.7588, 3.0684



29.0025, 46.7306, 18.6893



7.0011, 9.2982, 4.4768

Inverse Universe

The Inverse Universe completely reimagines the original color for something new.



70.6967, -19.5791, -4.6893



89.3867, -28.3417, -8.1696



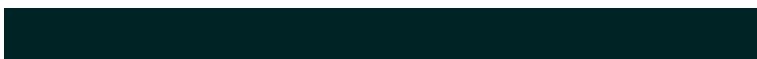
60.2201, -3.4550, -19.1976



35.4274, -4.2808, 0.7179



49.9140, -23.1753, -12.3593



11.5591, -5.5399, -2.4888

Previews

White Background



This preview shows how the HunterLab color 58.2760, 17.5318, 12.5185 looks on a white background.

Color Contrast Check

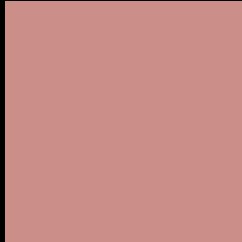
Large Text (above 18pt) WCAG AA × Fail

Any Text WCAG AA × Fail

Large Text (above 18pt) WCAG AAA × Fail

Any Text WCAG AAA × Fail

Black Background



This preview shows how the HunterLab color 58.2760, 17.5318, 12.5185 looks on a black background.

Color Contrast Check

Large Text (above 18pt) WCAG AA ✓ Pass

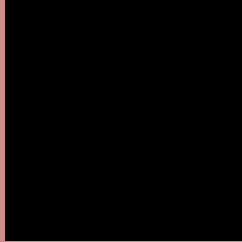
Any Text WCAG AA ✓ Pass

Large Text (above 18pt) WCAG AAA ✓ Pass

Any Text WCAG AAA ✓ Pass

If you want to check with other color combinations, try the [Color Contrast Checker](#).

HunterLab 58.2760, 17.5318, 12.5185 Background



This preview shows how black text looks on a background with the HunterLab color 58.2760, 17.5318, 12.5185.



This preview shows how white text looks on a background with the HunterLab color 58.2760, 17.5318,

Color Blindness Simulation

Color vision deficiency is a very complex topic, and I could not describe the different causes any better than Wikipedia does, so if you want to learn more, you should check out their [article about color blindness](#).

Dichromacy



Original Color

58.2760, 17.5318, 12.5185

Protanopia

58.3267, -2.9139, 9.0683

Deuteranopia

58.4147, 4.1833, 13.1759



Tritanopia

58.2557, 20.7992, 6.8946

Trichromacy



Original Color

58.2760, 17.5318, 12.5185

Protanomaly

58.2780, 4.0707, 10.3450

Deuteranomaly

58.2033, 9.1585, 12.6753

Tritanomaly

58.3723, 19.5937, 9.1025

Monochromacy



Original Color

58.2760, 17.5318, 12.5185

Achromatopsia

59.2902, -3.1636, 3.2213

Achromatomaly

58.5209, 3.9842, 6.4671

CSS Examples

Text

The CSS property to change the color of the text to HunterLab 58.2760, 17.5318, 12.5185 is called "color". The color property can be set on classes, ids or directly on the HTML element.

This example shows how text in the color `rgb(204, 142, 136)` looks like.

```
.text, #text, p{  
    color:rgb(204, 142, 136)  
}
```

If you want to add a text shadow in that color use the text-shadow property, you can generate a text shadow directly with our [CSS Text Shadow Generator](#).

Here you see how black text with a 4 pixel rgb(204, 142, 136) colored shadow looks like.

```
.shadow{ text-shadow: 4px 4px 2px rgb(204, 142, 136) }
```

Border

The CSS property to change the border of an element to HunterLab 58.2760, 17.5318, 12.5185 is called "border". The border property can be set on classes, ids or directly on the HTML element.

This example shows the color as border, it can be applied via the CSS property "border" or "border-color".

```
.border, #border, table{ border:4px solid rgb(204, 142, 136) }
```


If only the border color should be changed use the property `border-color`.

```
.border{ border-color:rgb(204, 142, 136) }
```

If you want to add a box shadow in that color use:

Here you see how a box with a 4 pixel `rgb(204, 142, 136)` colored shadow looks like.

```
.boxshadow{ -moz-box-shadow:4px 4px 4px  
4px rgb(204, 142, 136); -webkit-box-  
shadow:4px 4px 4px 4px rgb(204, 142, 136);  
box-shadow:4px 4px 4px 4px rgb(204, 142,  
136) }
```

Background

The CSS property to change the background color of an element to HunterLab 58.2760, 17.5318, 12.5185 is called "background". The background property can be set on classes, ids or directly on the HTML element.

```
.background, #background, body{  
background: rgb(204, 142, 136) }
```

If only the background color should be changed can be used:

```
.background{ background-color: rgb(204,  
142, 136) }
```

This example shows the color as background, it is applied via the CSS property "background".

To optimize and compress your CSS code, you can use our [online CSS compressor and optimizer](#) based on csstidy. If you want to create a linear or radial gradient as background or border, check our [CSS Gradient Generator](#).

Hey! You found this booklet interesting? Support Converting Colors with the new Membership Option!

The pro membership hides all ads, plus gives you double the colors in the color bucket, and more awesome pro features!

[Learn more, Memberships starting at \\$2.50/m!](#)

**Follow me
on Twitter!**

@ConvertingColor